

440

**BERKSHIRE
HATHAWAY** | UTAH
HOMESERVICES | PROPERTIES

COMMERCIAL DIVISION



RARE RETAIL SPACE AVAILABLE ON PARK CITY'S HISTORIC MAIN STREET

Retail | For Sublease

OLD TOWN 440 MAIN STREET | PARK CITY, UTAH 84060

\$65 PSF/NNN CAM: \$10.35 PSF

KATIE WILKING CCIM, MRED
435 640-4964
katie@wswcommercial.com

JILL SNYDER
435 671-0793
jill@wswcommercial.com

CHELSEA WALL
435 671-3541
chelsea@wswcommercial.com

- APPROXIMATELY 2,900 SF
- IDEAL LOCATION
- AVAILABLE FOR SUBLEASE
- SUBLEASE EXPIRES 8/31/2025

© 2023 BHH Affiliates, LLC. An independently owned and operated franchisee of BHH Affiliates, LLC. Berkshire Hathaway HomeServices and the Berkshire Hathaway HomeServices symbol are registered service marks of Columbia Insurance Company, a Berkshire Hathaway affiliate. Equal Housing Opportunity. Information not verified or guaranteed. Berkshire Hathaway HomeServices and/or its representatives do not warrant or guarantee this information. Information herein was provided by Owner/Seller. Lessee/Purchaser is responsible to confirm any information considered a factor in a decision to lease or purchase.

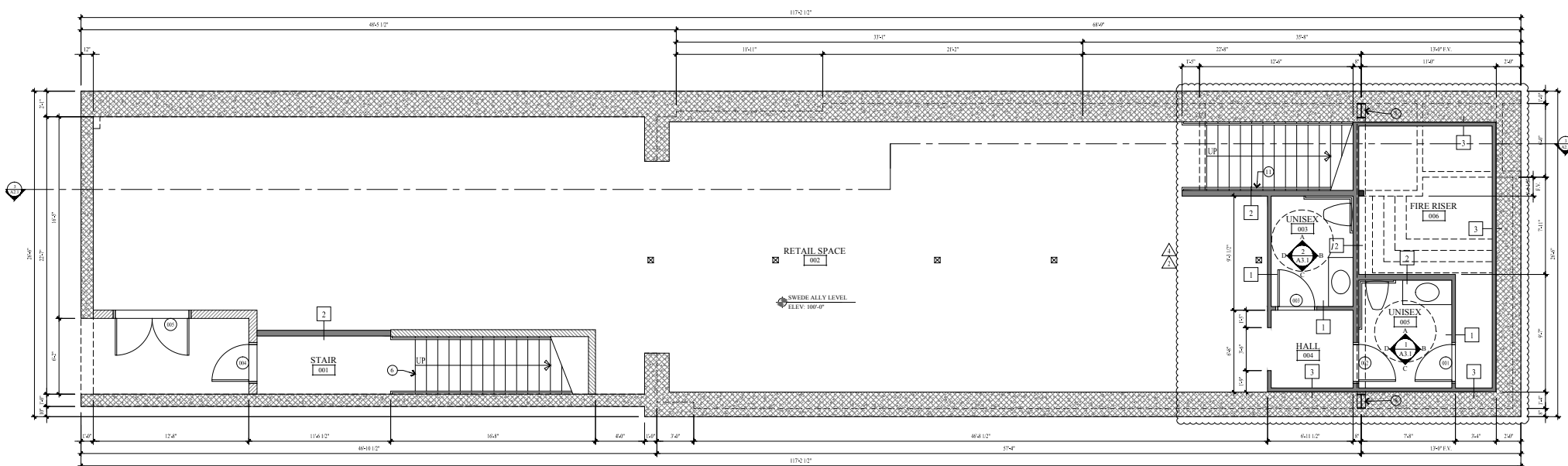
PROPERTY DETAILS

OLD TOWN 440 MAIN STREET | PARK CITY, UTAH 84060



FLOORPLANS

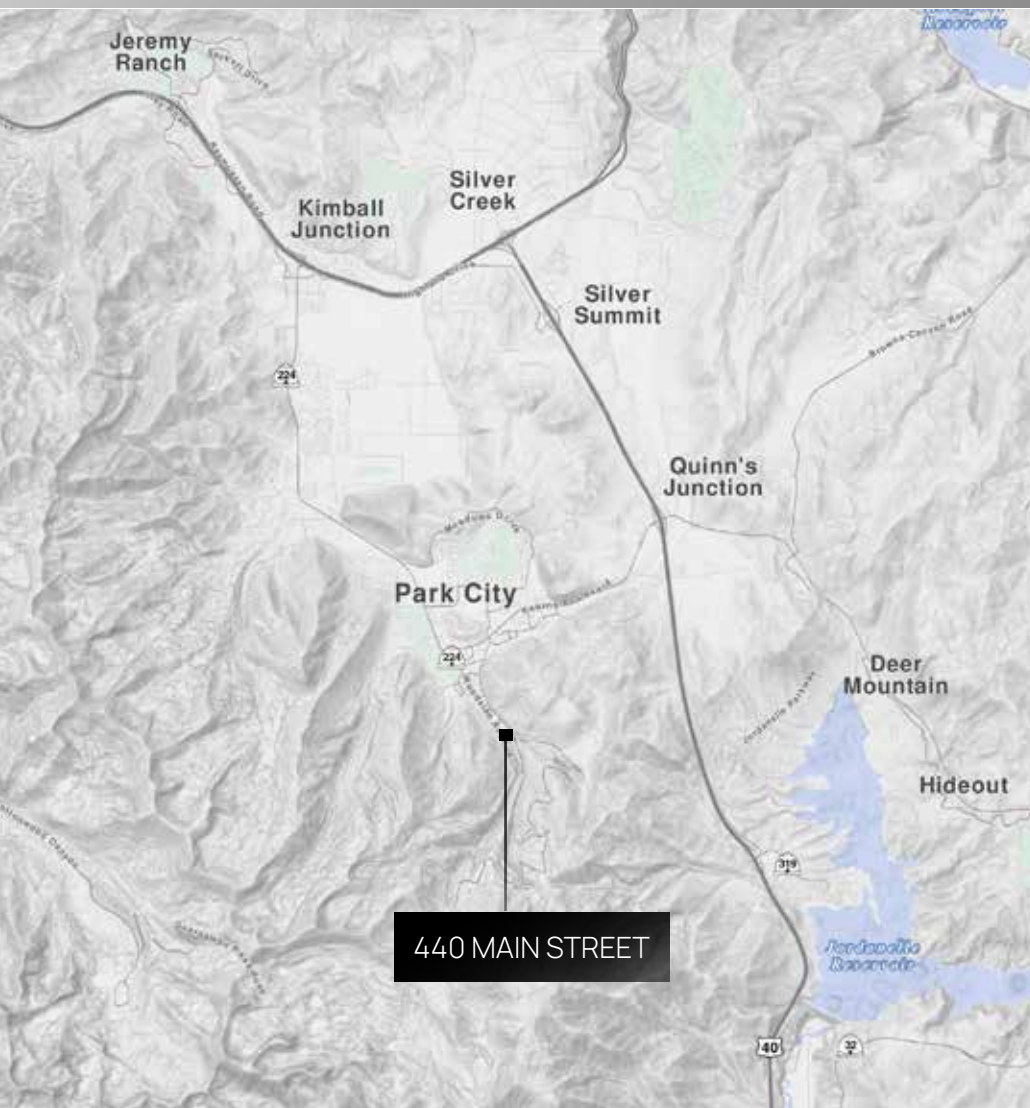
OLD TOWN 440 MAIN STREET | PARK CITY, UTAH 84060



SWEDE ALLY LEVEL PLAN
SCALE: 1/4" = 1'-0"

LOCATION

OLD TOWN 440 MAIN STREET | PARK CITY, UTAH 84060





OLD TOWN
440 MAIN STREET
PARK CITY, UTAH 84060

- Approximately 2,900 SF of commercial space on Park City's coveted Main Street
- Ideal location on the center of the street
- Recently Renovated
- Current tenant- Lazy Sun
- Close proximity to Fannagan's, Gallery Mar, The Marquis Park City, and U.S. Post Office
- 8' ceiling height

\$65 PSF/NNN
CAM \$10.35 PSF

i

BHHSUTAH.COM

KATIE WILKING CCIM, MRED
435 640-4964
katie@wswcommercial.com

JILL SNYDER
435 671-0793
jill@wswcommercial.com

CHELSEA WALL
435 671-3541
chelsea@wswcommercial.com

BERKSHIRE HATHAWAY | UTAH
HOMESERVICES | PROPERTIES

COMMERCIAL DIVISION