

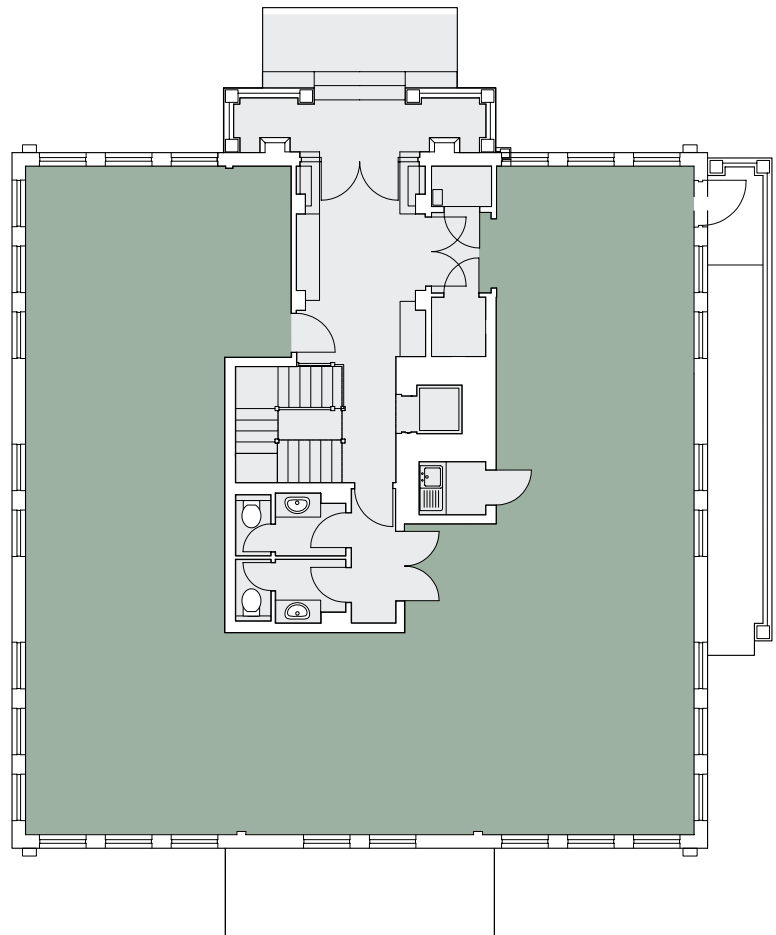


# Cedar House

1,836 SQ FT

## SPECIFICATION

- Open plan
- Raised floor
- Suspended ceiling
- LG 3 lighting
- Gas fired central heating
- Kitchenette
- Carpets
- 5 on site car parking spaces
- Further car parking spaces are available by way of separate licence agreement
- Male, female and Disabled WC facilities



# Cedar House

2,051 SQ FT

## SPECIFICATION

- Open plan
- Raised floor
- Suspended ceiling
- LG 3 lighting
- Gas fired central heating
- Kitchenette
- Carpets
- 5 on site car parking spaces
- Further car parking spaces are available by way of separate licence agreement
- Male, female and Disabled WC facilities

