

**9011 Freeway Drive
Macedonia, Ohio 44056**

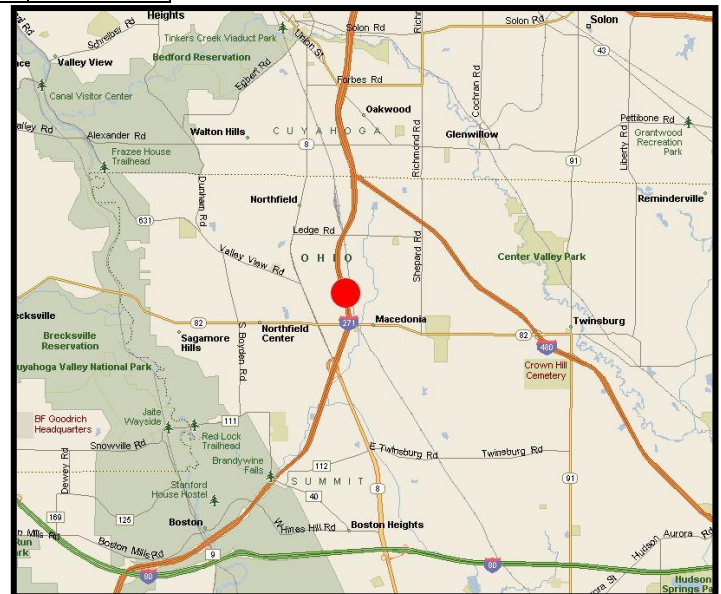


Unit #	Total sf	Warehouse sf	Office sf	Docks	Drive-Ins
A	8,757 sf	7,810 sf	947 sf	3	0
Entire Building	29,568 sf	29,568 sf	0 sf	4	1

Property Specifications:

Total Building: 29,568 sf
 Land: 1.95 acres
 Ceiling Height: 16' / 17'
 Year Built: 1979
 Construction: Masonry/Steel
 Sprinkler: No
 Lighting: Fluorescent
 Heat: Overhead Gas Unit
 Air-Conditioning: Office
 Power: 200a 208v 3p
 Floors: 1
 Roof: Flat

- **Entire building available for Investment opportunity**
- **Ample parking is available**
- **Handicap accessible**



For More Information Please Contact:

Fred Christie, SIOR
Principal

216.525.1468

fchristie@crescorealestate.com

3 Summit Park Drive • Suite 200 • Cleveland, Ohio 44131
216-520-1200 • Fax: 216-520-1828 crescorealestate.com

Information herein is not guaranteed. It is obtained from reliable sources and is subject to errors, omissions, changes and withdrawal without notice.

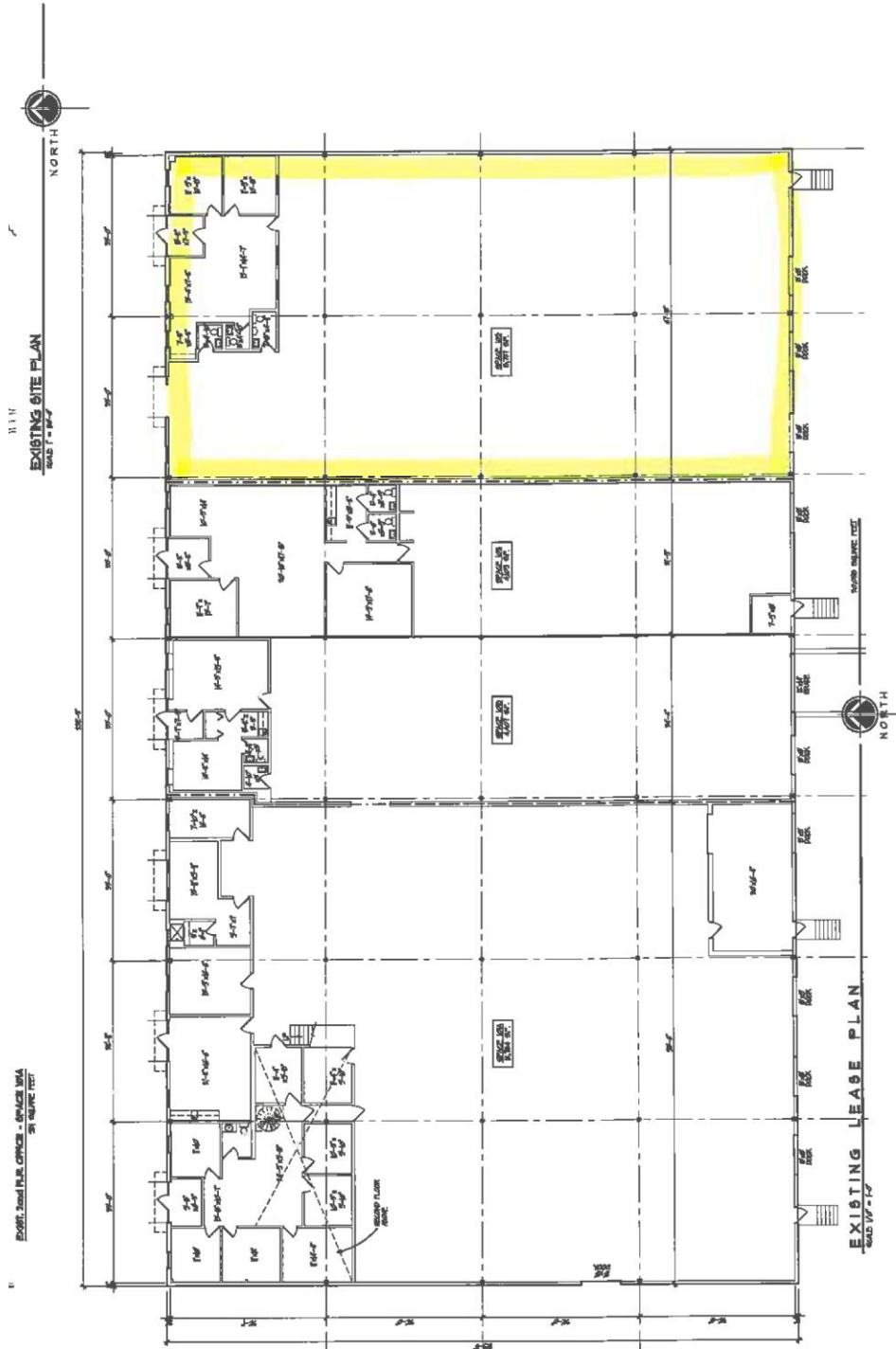
**9011 Freeway Drive
Macedonia, Ohio 44056**



3 Summit Park Drive • Suite 200 • Cleveland, Ohio 44131
216-520-1200 • Fax: 216-520-1828 crescorealestate.com

Information herein is not guaranteed. It is obtained from reliable sources and is subject to errors, omissions, changes and withdrawal without notice.

**9011 Freeway Drive
Macedonia, Ohio 44056**



3 Summit Park Drive • Suite 200 • Cleveland, Ohio 44131
216-520-1200 • Fax: 216-520-1828 crescorealestate.com

Information herein is not guaranteed. It is obtained from reliable sources and is subject to errors, omissions, changes and withdrawal without notice.

Profile 1 of 2

Prepared By: Renee Thomason

Summary (7063)



THE LEVIN GROUP

**9011 Freeway Dr.
Macedonia, OH 44056**

County:	Summit
Market:	SE-Z2
Sub Market:	Summit County North/Portage County
Land Size (Acres)	1.95 Acres
Available SF:	29,568 SF
Building SF:	29,568 SF
Industrial SF:	29,568 SF

General Listing/Transaction Information

Asking Price:	\$1,200,000.00 \$40.584 Per SF
Transaction Type:	Sale

Parking

Parking Comments:	Ample
--------------------------	-------

Loading & Doors

# GL/DID:	1
#DH/Truck-level Doors:	4
Total Doors:	5

Contacts

Listing Broker(s)	Fred Christie, SIOR Cresco Real Estate 216.525.1468 fchristie@crescorealestate.com
--------------------------	---

Building

Construction Status:	Existing
Primary Use:	Flex
Floors:	1
Multi-Tenant:	Multi-Tenant
Year Built:	1979
ConstructionType:	Masonry/Steel
Exterior Type:	Brick & Steel
Roof Type:	Flat
Deck Type:	Metal
Floor Type:	Concrete
Lighting Type:	Fluorescent
Sprinkler:	No
Heat:	Overhead Gas Unit
AC:	Office
Handicapped Accessible (ADA):	Yes
Ceiling Ht:	16' (Min) 17' (Max)
Column Spacing:	32'x33'

Utilities

Power:	208 v 200 a 3 p
---------------	-----------------

Site

Land SF:	84,942 SF
Zoning:	L-IND
Land Condition:	Good

Crane

# Cranes:	0
Capacity Tons (Min)	0
Capacity Tons (Max)	0

Comments

Listing Comments: Investment Opportunity

6/2/2014

Profile 2 of 2

Summary (26988)



THE LEVIN GROUP

9011 Freeway Dr., Ste A
Macedonia, OH 44056

County: Summit
Market: SE-Z2
Sub Market: Summit County North/Portage County
Land Size (Acres) 1.95 Acres
Available SF: 8,757 SF
Building SF: 29,568 SF
Industrial SF: 7,810 SF
Office SF: 947 SF

General Listing/Transaction Information

Office Asking Rate: \$8.50
Warehouse Rate: \$4.50
Min Avail SF: 8,757 SF
Max Contig SF: 8,757 SF
Transaction Type: Lease

Parking

Parking Comments: Ample

Loading & Doors

Ext. Docks: 3
GL/DID: 0
#DH/Truck-level Doors: 3
Total Doors: 3

Contacts

Listing Broker(s) Fred Christie, SIOR
 Cresco Real Estate
 216.525.1468
 fchristie@crescorealestate.com

Building

Construction Status: Existing
Primary Use: Flex
Floors: 1
Year Built: 1979
ConstructionType: Masonry/Steel
Exterior Type: Brick & Steel
Roof Type: Flat
Deck Type: Metal
Floor Type: Concrete
Lighting Type: Fluorescent
Sprinkler: No
Heat: Overhead Gas
Ceiling Ht: 16' (Min) 16' (Max)
Column Spacing: 32'x33'

Utilities

Power: 208 v 200 a 3 p

Site

Land SF: 84,942 SF
Zoning: L-IND

Crane

Cranes: 0

Comments