

FOR LEASE

100 Longwater Avenue

Green Park,
Reading,
RG2 6GP



Building Description

Situated in the heart of Green Park across 195 acres of parkland, 100 Longwater Avenue provides light and comfortable work space. The park offers a wide range of on-site amenities, security and open spaces for recreation.

Terms

- + Further quoting terms, please contact CBRE

Specification

- + Four pipe fan coil air conditioning
- + Fully accessible raised floors
- + Showers and bike racks
- + Manned reception
- + Meeting and conference facilities on-site
- + On-site Byte Café
- + 24 hour security on the Park

FOR LEASE

100 Longwater Avenue



Location

100 Longwater Avenue is strategically located close to the M4 and the A33 providing excellent links to Heathrow airport.

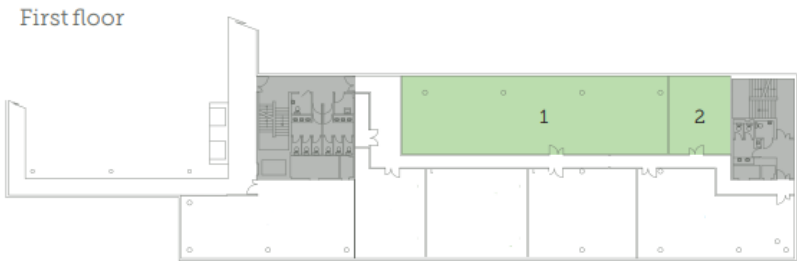
Green Park is 8 minutes from Reading station, which provides high-speed rail services to central London (26 minutes), Oxford (23 minutes) and Birmingham (92 minutes).

Shuttle buses connect Green Park to Reading station and Reading town centre five days a week, with services every 10 minutes.

Availability

Level	Sq ft	Sq m
First Floor – Suite 1	2,073	193
First Floor – Suite 2	487	45
Total	2,560	238

Current layout plans



CONTACT US

Chris Williams

+44 020 7182 2166
chris.williams@cbre.com

Sophie Crook

+44 020 7182 3420
sophie.crook@cbre.com

© 2018 CBRE, Inc. This information has been obtained from sources believed reliable. We have not verified it and make no guarantee, warranty or representation about it. Any projections, opinions, assumptions or estimates used are for example only and do not represent the current or future performance of the property. You and your advisors should conduct a careful, independent investigation of the property to determine to your satisfaction the suitability of the property for your needs.

Photos herein are the property of their respective owners and use of these images without the express written consent of the owner is prohibited.