



6,690 SF BUILDING ON 1.07 ACRES OF LAND

FORMER BANK WITH EXPANSIVE PARKING

7549 W 63RD ST, SUMMIT, IL

FOR SALE OR LEASE



CONTACT: SHARON BAR-SHALOM sbarshalom@metrocre.com 847.780.1299 **GARY GREENFIELD** ggreenfield@metrocre.com 847.412.9898



PROPERTY HIGHLIGHTS

- 6,690 SF Building Available for Sale or Lease
- Former Bank with Expansive Parking
- Includes Fully Finished Basement

NEAR-BY AREA TENANTS



DEMOGRAPHICS

	1 MILE	3 MILES	5 MILES
TOTAL POPULATION	12,392	105,831	391,758
DAYTIME POPULATION	8,611	75,903	248,263
HOUSEHOLDS	4,084	38,388	135,621
AVG HH INCOME	\$93,815	\$104,939	\$123,055

TRAFFIC COUNTS

	COUNT
W 63RD ST	17,000 VPD
ARCHER AVE	30,000 VPD
HARLEM AVE	44,000 VPD

AERIAL

7549 W 63RD ST, SUMMIT, IL

FOR SALE OR LEASE



CONTACT INFORMATION:

SHARON BAR-SHALOM
 sbarshalom@metrocre.com
 847.780.1299

GARY GREENFIELD
 ggreenfield@metrocre.com
 847.412.9898

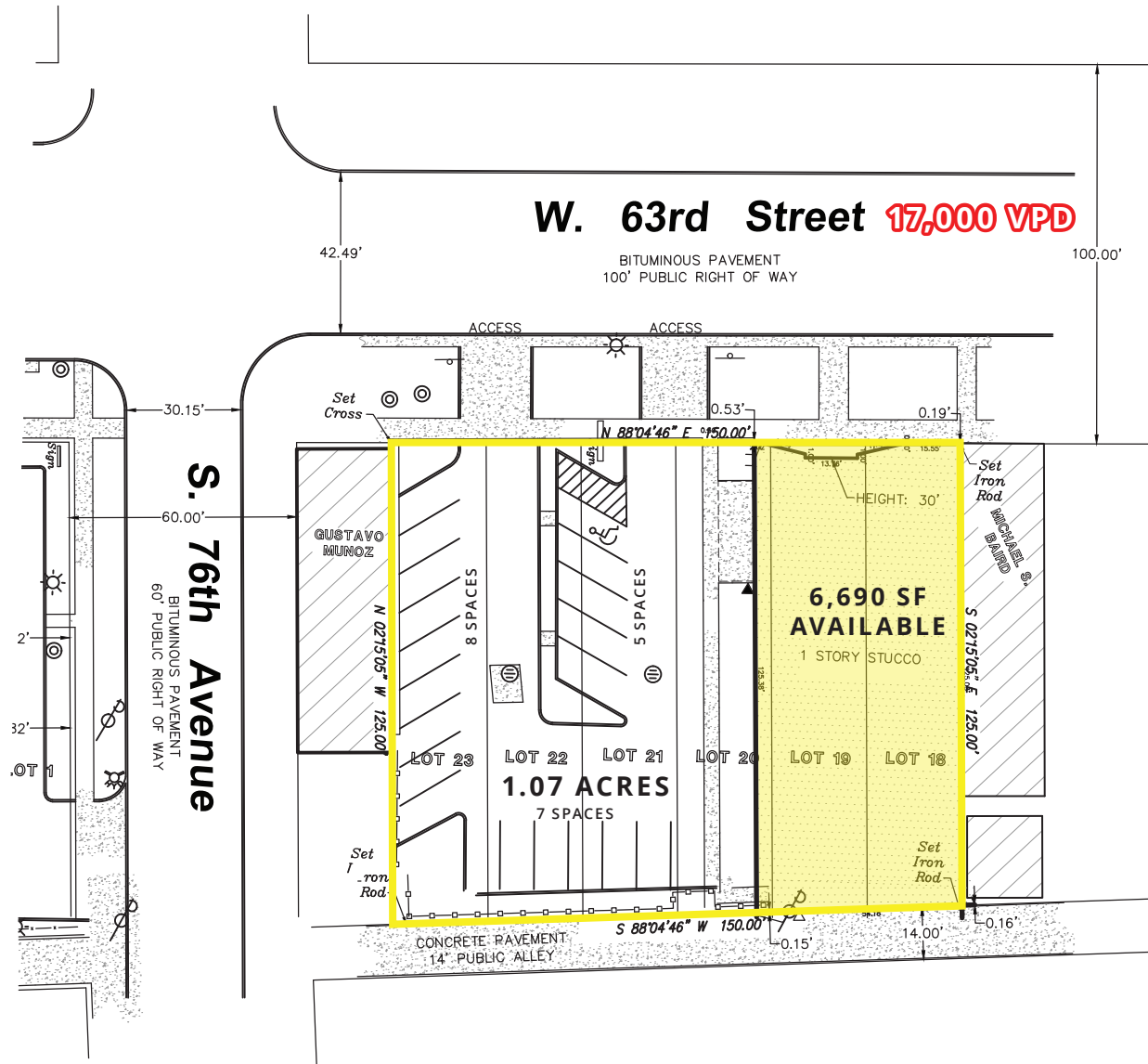
56 Skokie Valley Road
 Highland Park, Illinois 60035
 www.MetroCRE.com



SITE PLAN

7549 W 63RD ST, SUMMIT, IL

FOR SALE OR LEASE



CONTACT
INFORMATION:

SHARON BAR-SHALOM
sbarshalom@metrocre.com
847.780.1299

GARY GREENFIELD
ggreenfield@metrocre.com
847.412.9898

56 Skokie Valley Road
Highland Park, Illinois 60035
www.MetroCRE.com



INTERIOR PHOTOS

7549 W 63RD ST, SUMMIT, IL

FOR SALE OR LEASE



CONTACT
INFORMATION:

SHARON BAR-SHALOM
sbarshalom@metrocre.com
847.780.1299

GARY GREENFIELD
ggreenfield@metrocre.com
847.412.9898

56 Skokie Valley Road
Highland Park, Illinois 60035
www.MetroCRE.com

