

FOR LEASE > INDUSTRIAL BUILDING

±20,000 Square Feet

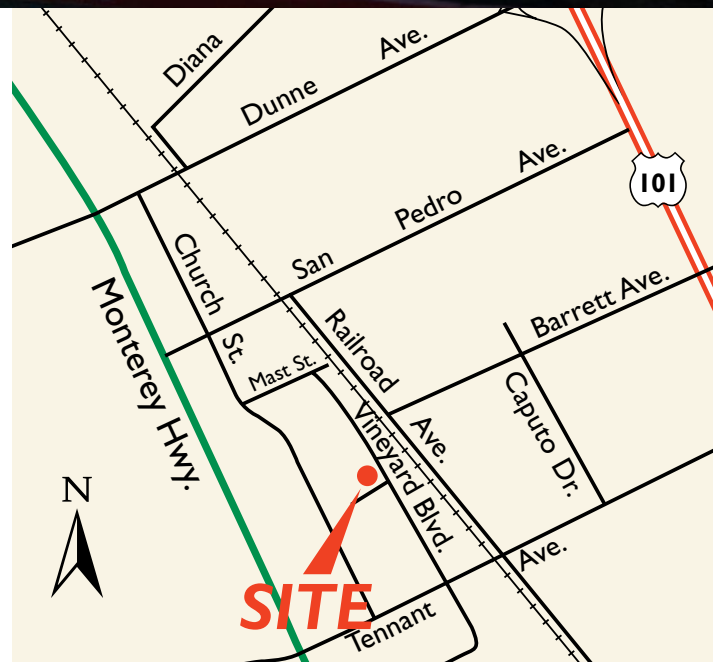


16235 VINEYARD BOULEVARD, MORGAN HILL, CA



Property Highlights

- Divisible to 10,000 SF
- 3,500 SF of office
- 3.2/1000 parking
- Ample Power
- Office furniture available
- 3 roll-up doors
- 16' to 18' clear height
- \$1.25 NNN



JEFF BARNES

+1 408 218 3366
jeff.barnes@colliers.com
CA License No. 00883278

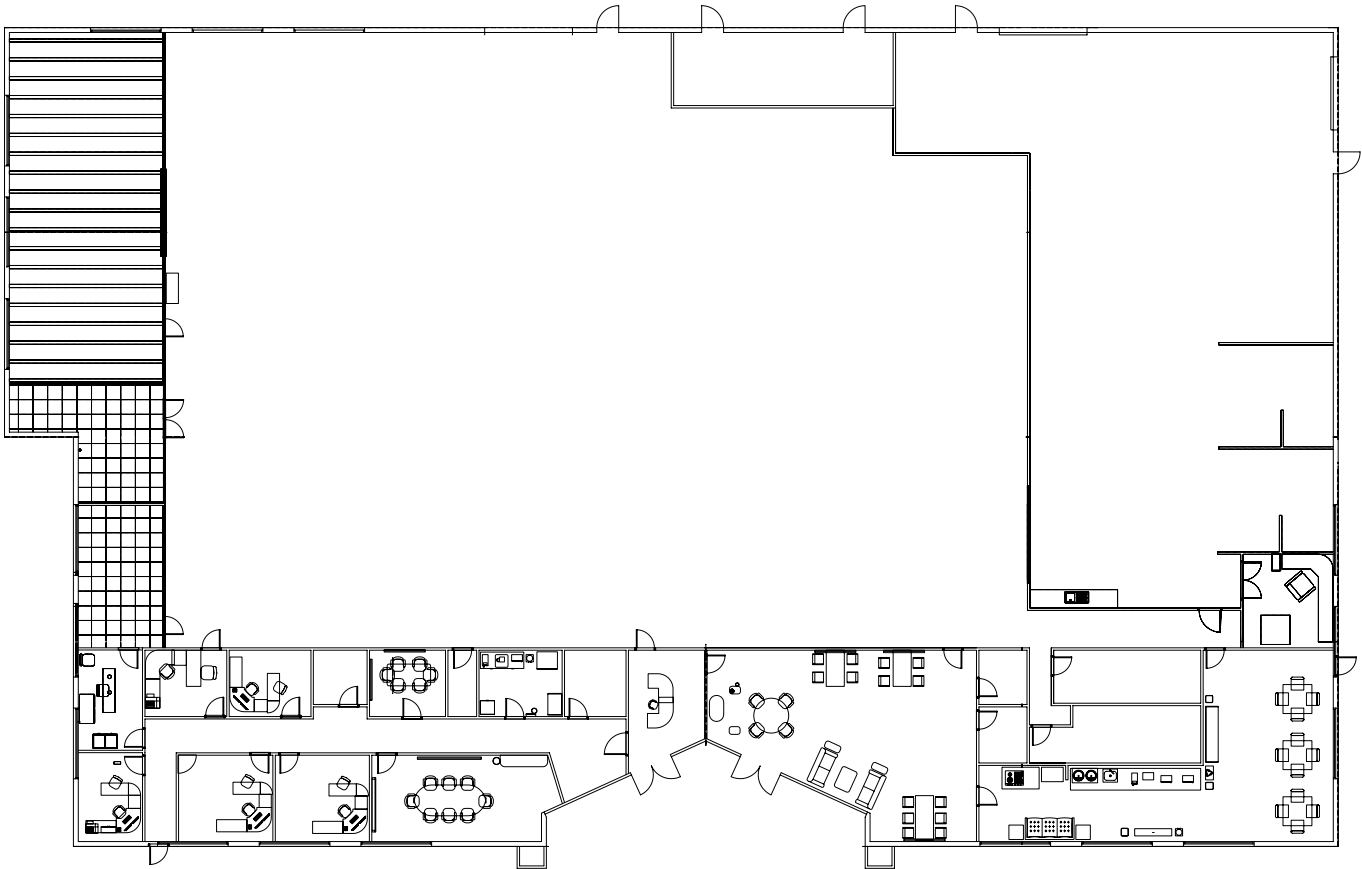
JEFF PETULLA

Heil & Associates Real Property Services
+1 408 888 4859
jpetulla@heilinc.com

COLLIERS INTERNATIONAL

8070 Santa Teresa Blvd
Gilroy, CA 95020
+1 408 842 7000 Main
+1 408 292 8100 Fax
www.colliers.com

Floor Plan



±20,000 SF

Drawings not exact/not to scale. The information furnished has been obtained from sources we deem reliable and is submitted subject to errors, omissions and changes. Although Colliers International has no reason to doubt its accuracy, we do not guarantee it. All information should be verified by the recipient prior to lease, purchase, exchange, or execution of legal documents. © 2017 Colliers International

JEFF BARNES
+1 408 218 3366
jeff.barnes@colliers.com
CA License No. 00883278

JEFF PETULLA
Heil & Associates Real Property Services
+1 408 888 4859
jpetulla@heilinc.com

