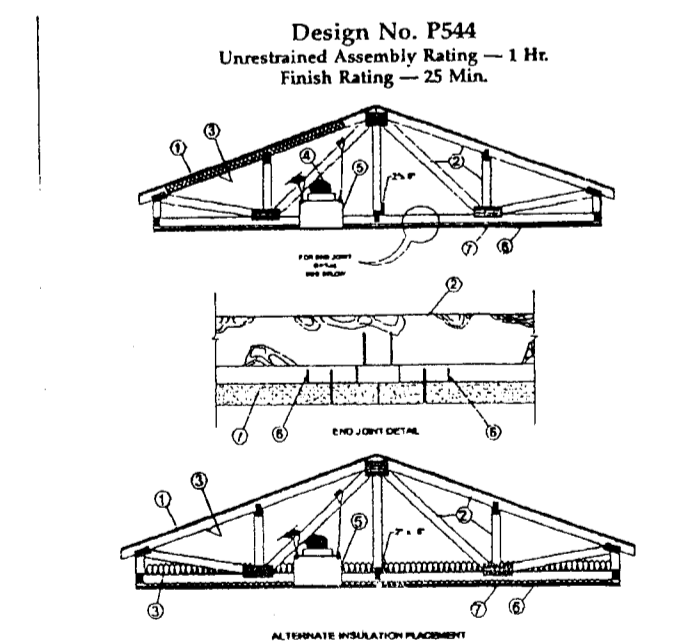
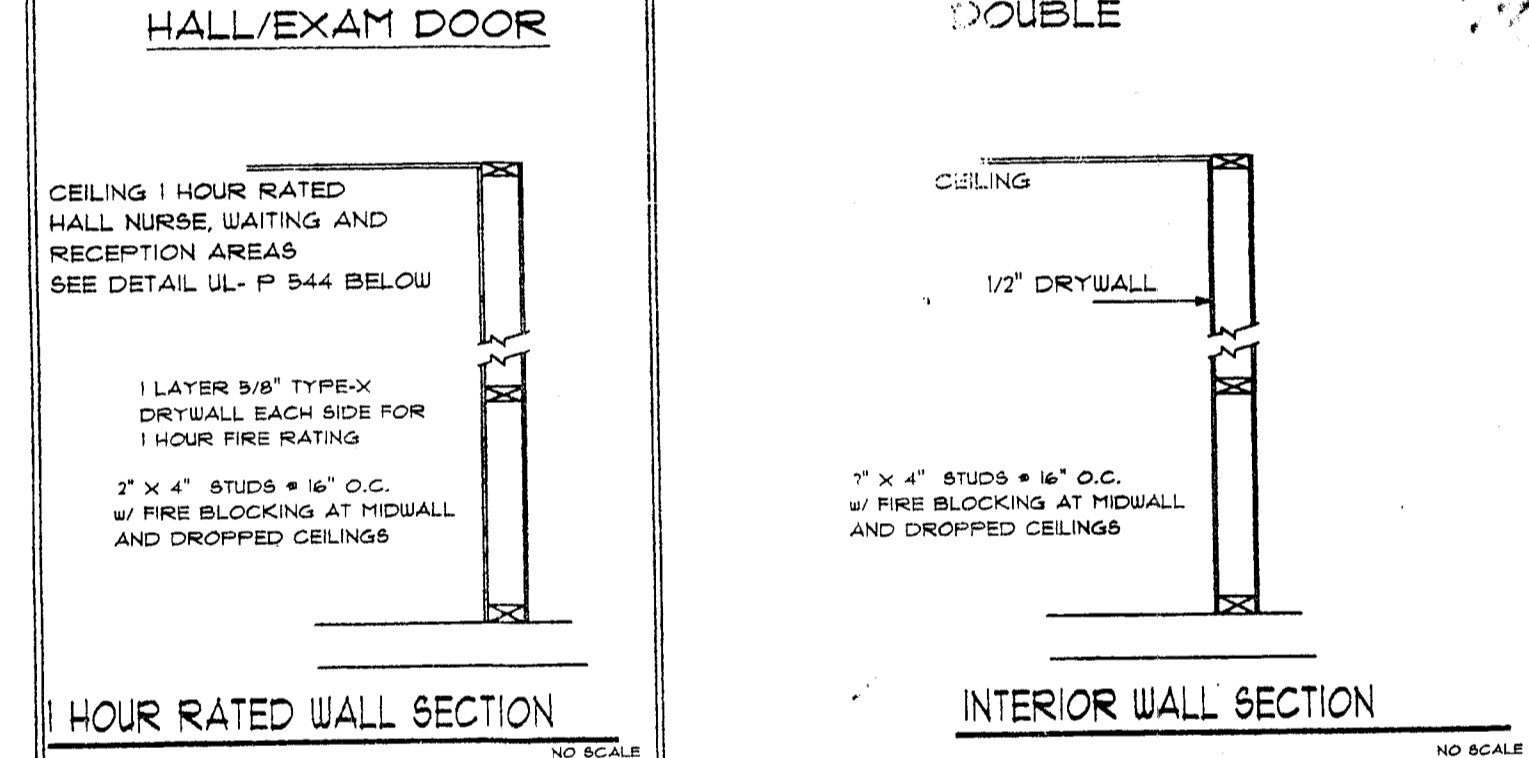
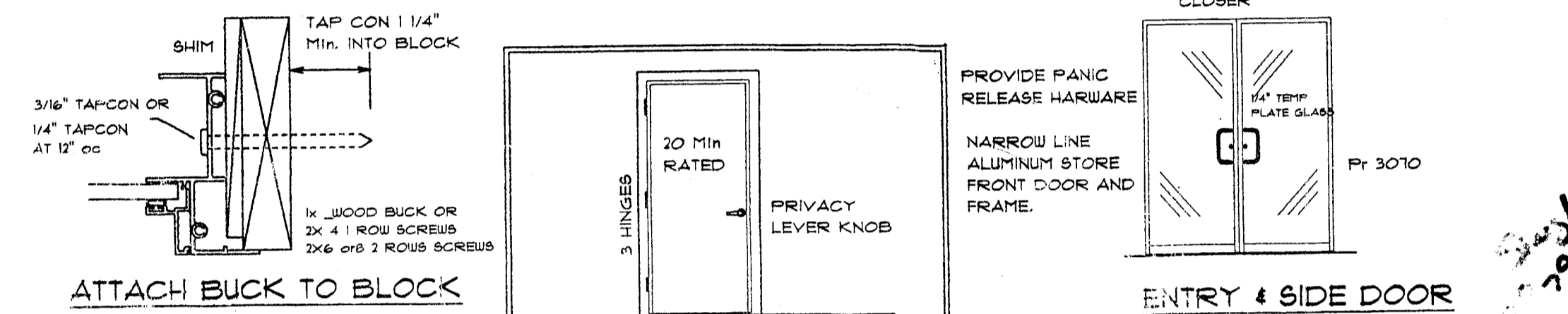
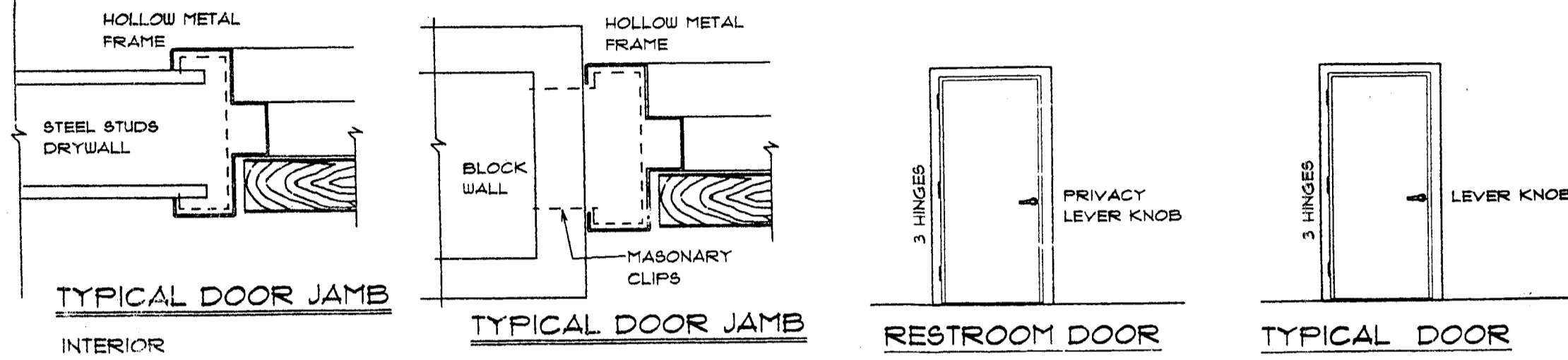


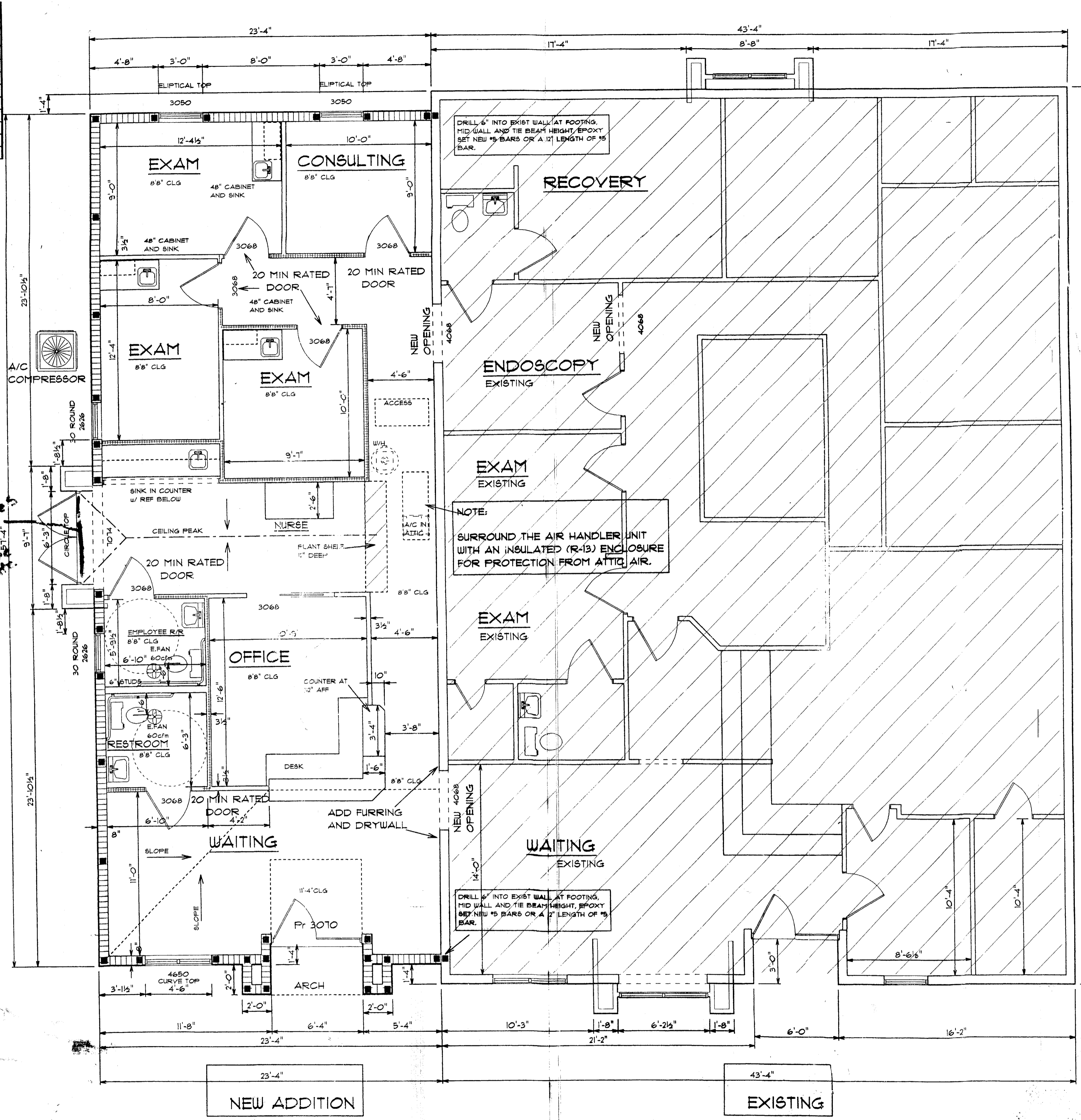
ROOM FINISH SCHEDULE					
ROOM	FLOOR	BASE	WALLS	CEILING	REMARKS
WAITING ROOM	CARPET	VINYL	PAINTED DRYWALL	5/8" D.W. PAINTED	
OFFICE	CARPET	VINYL	PAINTED DRYWALL	5/8" D.W. PAINTED	
EXAM ROOMS					
NURSE					
HALL					
REST ROOM	V.C.TILE	COVE	PAINTED DRYWALL	5/8" D.W. PAINTED	
EMPLOYEE REST RM	V.C.TILE	COVE	PAINTED DRYWALL		

ALL INTERIOR FINISHES SHALL HAVE A MINIMUM RATING OF CLASS "B"



- Roofing System - Any UL Class A, B or C Roofing System (TFR) or Prepared Roof Covering (PRF) acceptable for use over non 15/32 in. thick wood structural truss with grade "C" or "D" or "Shedding". Non 15/32 in. thick wood structural panels secured to trusses with construction adhesive and No. 60 ringed shank nails. Nails spaced 12 in. O.C. along each truss. Staples having equal or greater withdrawal and lateral resistance strength may be substituted for the 60 nails.
- Trusses - Pitch on Parallel chord trusses, spaced a max of 24 in. O.C. fabricated from non 2 by 4 lumber, with lumber oriented vertically or horizontally. Truss members secured together with 0.056 in. thick galv steel plates. Plates have 5/16 in. long teeth projecting perpendicular to the plane of the plate. The teeth are in pairs facing each other (made by the same punch), forming a split tooth type plate. Each tooth has a chisel point on its outside edge. These points are diagonally opposite each other for each pair. The top half of each tooth has a twist for stiffness. The pairs are repeated on approximately 7/8 in. centers with four rows of teeth per each of plate width. Where the truss intersects with the interior face of the exterior walls, the min truss depth shall be 5-1/4 in. with a min roof slope of 3/12 and a max area in the cross section of the truss of 21 sq ft. Where the truss intersects with the exterior face of the exterior walls, the min truss depth may be reduced to 3 in. if the batts and blankets (Item 3) are used as shown in the above illustration (Alternate Insulation Placement) and are firmly packed against the intersection of the bottom chord and the plywood sheathing.
- Batts and Blankets - (Optional) Glass fiber insulation, secured to the wood structural panels with staples spaced 12 in. O.C. or to the trusses with 0.090 in. diam galv steel wires spaced 12 in. O.C. Any glass fiber insulation bearing the UL Classification Marking as to Surface Burning Characteristics and/or Fire Resistance, having a min density of 0.5 pcf. As an option, the insulation may be fitted in the cross-section of the truss, draped over the resilient channel/gypsum wallboard ceiling membrane when resilient channels and gypsum wallboard attachment is modified as specified in Items 6 and 7. The finished rating has only been determined when the insulation is secured to the decking.
- Air Duct - Any UL Class 0 or Class 1 flexible air duct installed in accordance with the instructions provided by the damper manufacturer.
- Ceiling Damper - Maximum plenum box - non 19 in. long by 19 in. wide and 1-7/8 in. high fabricated from galvanized steel installed in accordance with the manufacturer's installation instructions.

- provided with the damper. Maximum damper openings not to exceed 250 sq. in. per 100 sq. ft. of ceiling area.
- LLOYD INDUSTRIES INC. - Model CDD 50-BT, CDD 50-FA-BT, CDD 50-BT, CDD 55-BT.
- Resilient Channels - Resilient channels, non 1/2 in. deep by 2 in. wide at the base and 1-1/4 in. wide at the face, formed from 0.025 thick galv steel, spaced 16 in. O.C. installed perpendicular to trusses. When batt and blanket material, Item 3, is draped over the resilient channel/gypsum wallboard ceiling membrane, the spacing shall be 12 in. O.C. Channels secured to each truss with 1-1/4 in. long Type 5-steel screws. Channels overlapped 4 in. at splices. Channels oriented parallel at wallboard butt joints (spaced 6 in. O.C.) as shown in the above illustration.
 - Wallboard, Gypsum - Non 5/8 in. thick, 48 in. wide, installed with long dimension perpendicular to resilient channels with 1 in. long Type 5 screws spaced 12 in. O.C. and located a min of 3/4 in. from side joints and 3 in. from the end joints. At end joints, two resilient channels are used, extending a min of 6 in. beyond both ends of the joint. When batt and blanket insulation, Item 3, is draped over the resilient channel/gypsum wallboard ceiling membrane, screws shall be installed at 8 in. O.C.
 - CANADIAN GYPSUM COMPANY - Types C, IPX2, IPCAR UNITED STATES GYPSUM CO. - Types C, IPX2, IPCAR USO MEXICO S A DE CV - Types C, IPX2, IPCAR
 - Finishing System - (Not Shown) Viny, dry, or premixed joint compound, applied in two coats to joints and screw-heads, paper tape, 2 in. wide, embedded in first layer of compound over all joints. As an alternate, non 3/32 in. thick veneer plaster may be applied to the entire surface of gypsum wallboard.
- *Bearing the UL Classification Mark



NEW ADDITION
EXTERIOR WALL HEIGHT 8'-8"
AREAS
HEATED & COOLED 1375 sq
ADDITION

I HEREBY CERTIFY THAT I HAVE REVIEWED THE ATTACHED DESIGN AND FOUND IT TO BE IN COMPLIANCE WITH SECTION 909.00 OF THE 2004 FBC BUILDING CODE

LOUIS C. GEORGE A.I.A. #2250
1003 W. MAGNOLIA ST.
LEESBURG, FL 34748

19.5 : 24.6 p.s.f

ARCHITECT

LOUIS C. GEORGE A.I.A.

909-A W. MAGNOLIA ST. LEESBURG, FLORIDA 3748

OFFICE ADDITION FOR

MUNI V. PADMAN MD, PA

LEESBURG, FLORIDA

U³ WAGNER-3 VENTURES INC.

SEAL #3250

August 8, 2001
DRAWN BY: [Signature]
JOB NO.
SHEET
OF