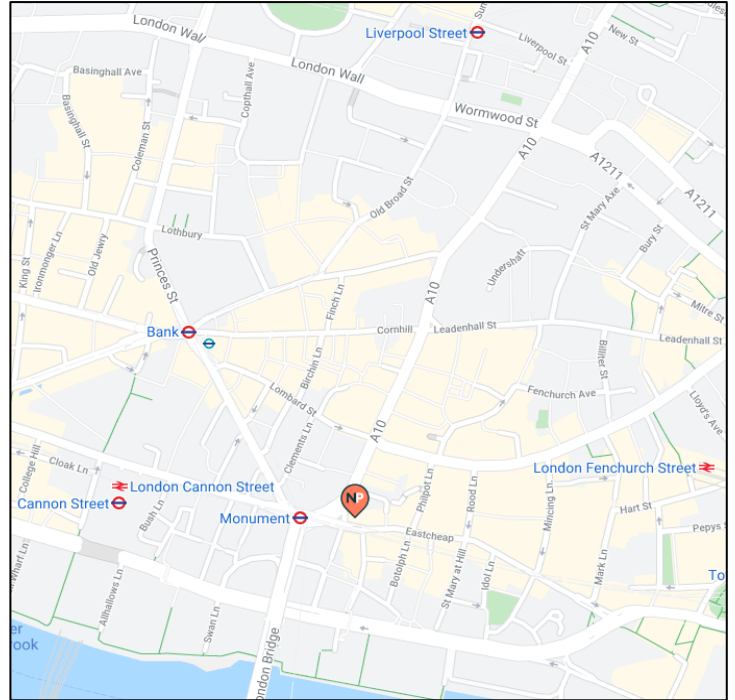


Fitted Offices To Let

48 Gracechurch Street, London, EC3



Transport Links

- 0.04 miles from Monument
- 0.20 miles from Bank
- 0.30 miles from Cannon Street
- 0.60 miles from Liverpool Street

Lease

A new lease is available for a term expiring October 2026, direct from the Landlord.

Rent

TBC

VAT

The building has been elected for VAT

Accommodation

4 th Floor	2,936 sq ft	273m ²
-----------------------	-------------	-------------------

*The offices are fitted out to provide a plug and play solution.

Rates Payable (2020/21)

Estimated at £20.78 per sq.ft

However, all interested parties should make their own enquiries.

Service Charge

Estimated at £14.48 per sq.ft

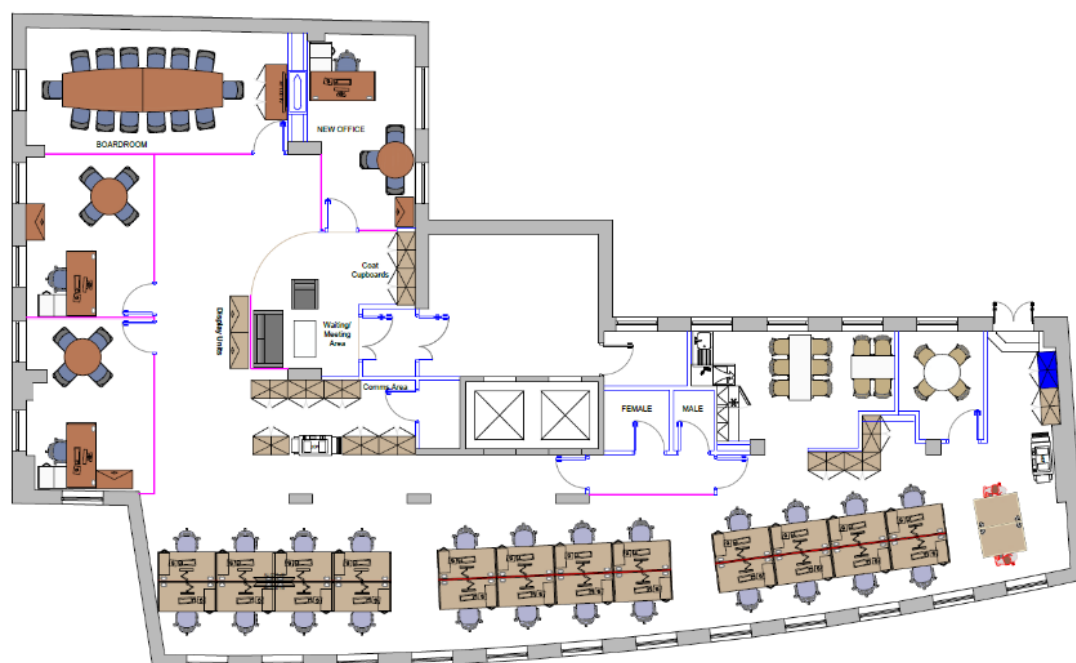
+44(0) 20 7456 0700

www.newtonperkins.com

Newton Perkins LLP
Peek House
20 Eastcheap
London EC3M 1NP

Amenities

- Plug & Play offices
- Air conditioning
- Metal Tile Suspended Ceilings
- Fully Accessible Raised Floor
- Commissionaire
- Excellent levels of natural light
- EPC Rating – D79



Newton Perkins

Jonathan Beilin – 07976 392 016
e-mail: jb@newtonperkins.com

Nick Russell-Smith – 07918 588 107
email: nrs@newtonperkins.com

Newton Perkins LLP, Peek House, 20 Eastcheap, London EC3M 1NP

Newton Perkins for themselves and for the vendors or lessors of this property whose agents they are given notice that:- (1) The particulars are set out as a general outline for the guidance of the intending purchasers and do not constitute part of an offer or contract; (2) All descriptions, dimensions, references to condition and necessary permissions for use and occupation and other details are given without responsibility and any intending purchasers should not rely on them as standards or representations of fact but must satisfy themselves by inspection or otherwise as to the correctness of each of them; (3) No persons in the employment of Newton Perkins has any authority to make or give any representation or warranty whatsoever in relation to this property