

AVAILABLE FOR LEASE



basecamp

Laurens Road and Blair Street, Greenville, SC 29607

Collett 

WWW.COLLETTRE.COM | 864.752.0300

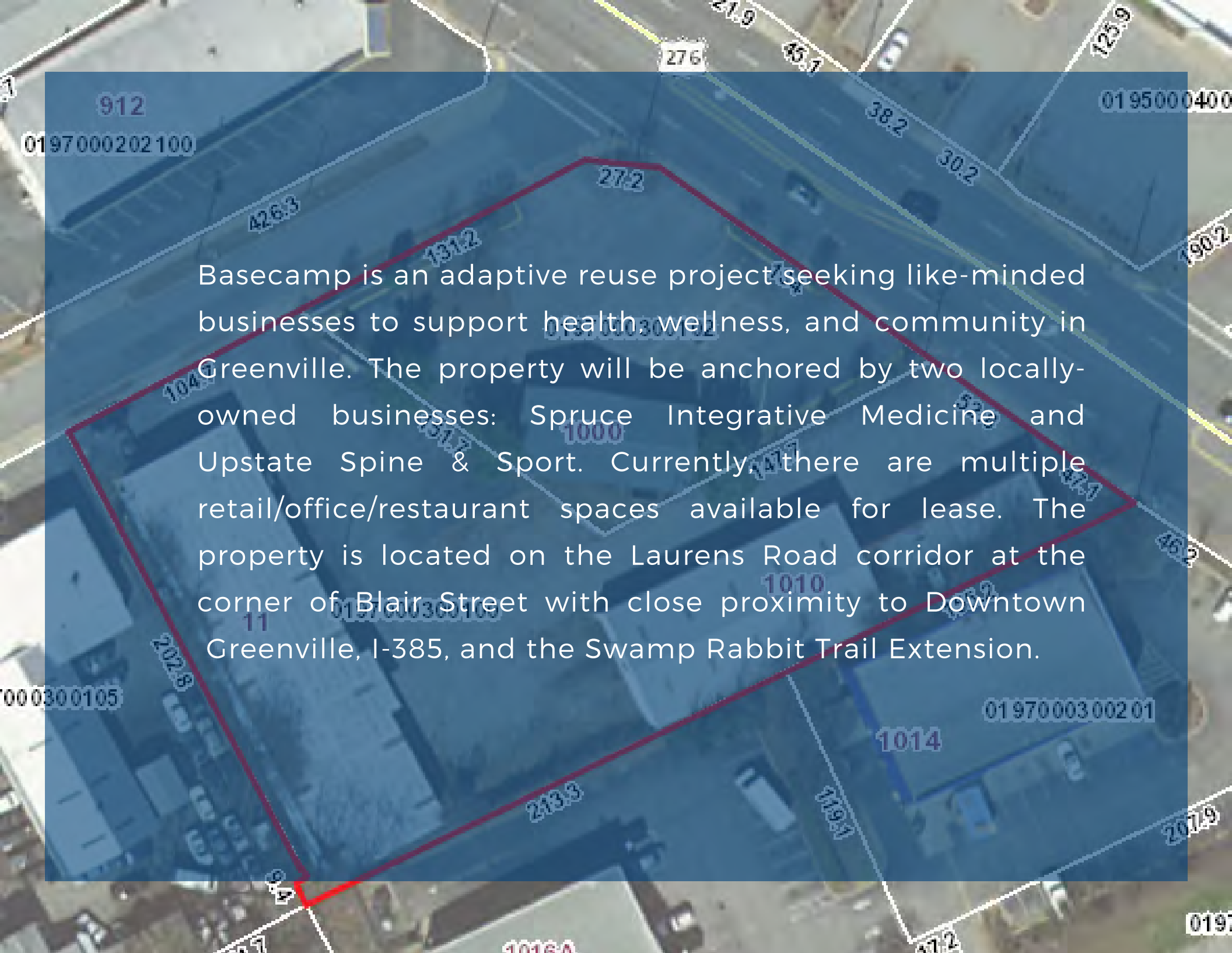
AVAILABLE FOR LEASE



ANCHOR TENANTS:

UPSTATE SPINE & SPORT | SPRUCE MD





Basecamp is an adaptive reuse project seeking like-minded businesses to support health, wellness, and community in Greenville. The property will be anchored by two locally-owned businesses: Spruce Integrative Medicine and Upstate Spine & Sport. Currently, there are multiple retail/office/restaurant spaces available for lease. The property is located on the Laurens Road corridor at the corner of Blair Street with close proximity to Downtown Greenville, I-385, and the Swamp Rabbit Trail Extension.

1 MILE

Population (2021)

6,865

Projected Pop. (2026)

7,079

Avg. Household Income

\$69,352 (2021)

\$81,760 (2026)

2 MILES

Population (2021)

35,633

Projected Pop. (2026)

37,237

Avg. Household Income

\$104,191 (2021)

\$120,240 (2026)

3 MILES

Population (2021)

70,311

Projected Pop. (2026)

74,650

Avg. Household Income

\$103,847 (2021)

\$118,580 (2026)

AERIAL VIEW

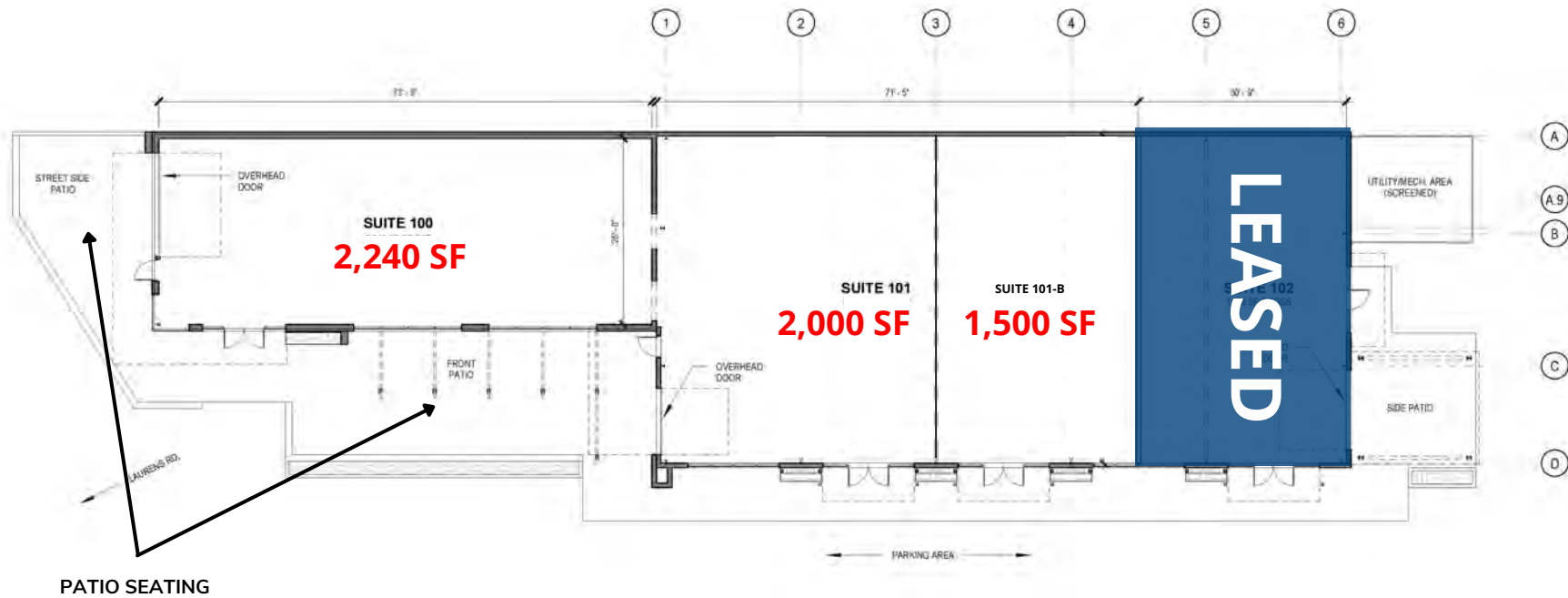




SITE PLAN

LEASING PLAN

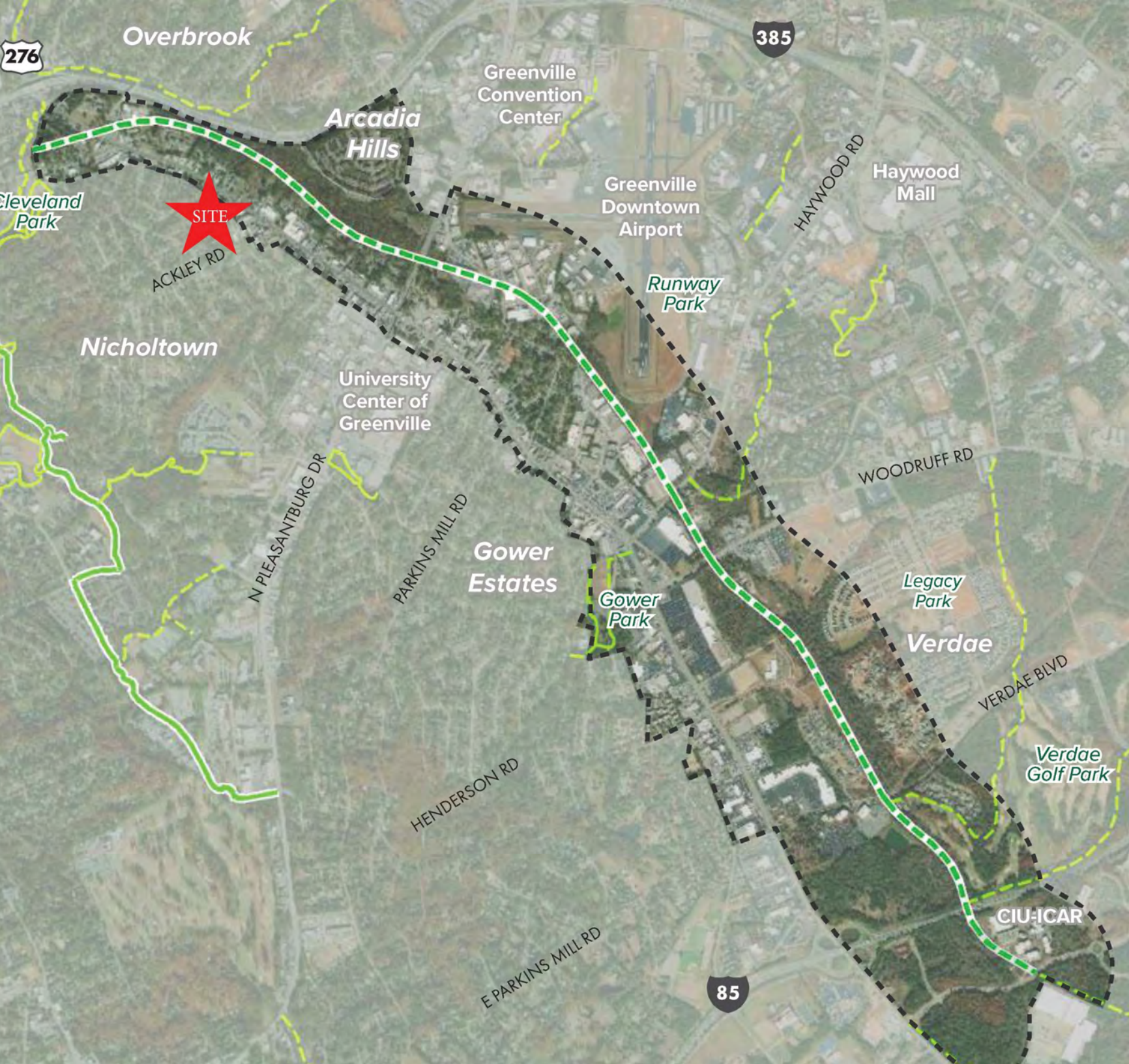
LAURENS RD



SUITE 100: 2,240 SF

SUITE 101: 2,000 SF

SUITE 101-B: 1,500 SF



SWAMP RABBIT TRAIL EXTENSION

CONTACT US

BRAYDEN WYNN

Broker/CCIM

bwynn@collettre.com

864.752.0304

OFFICE ADDRESS

217 A East Washington St
Greenville, SC 29601



WEBSITE

collettre.com