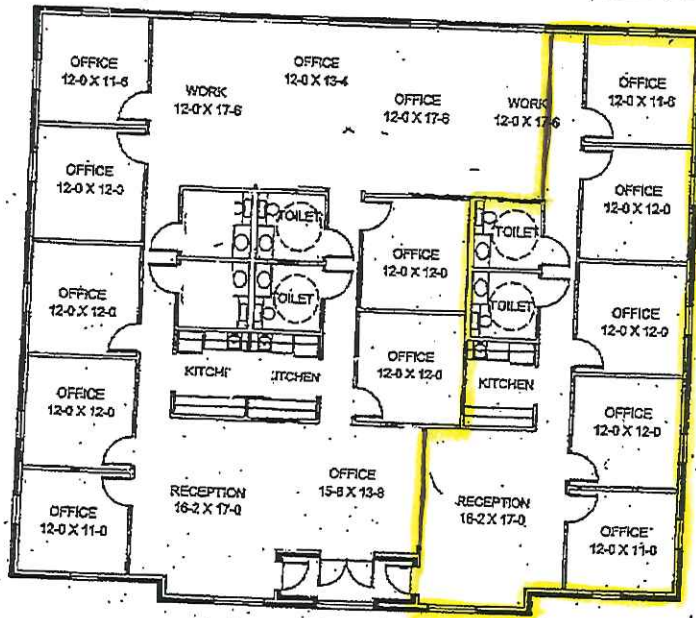
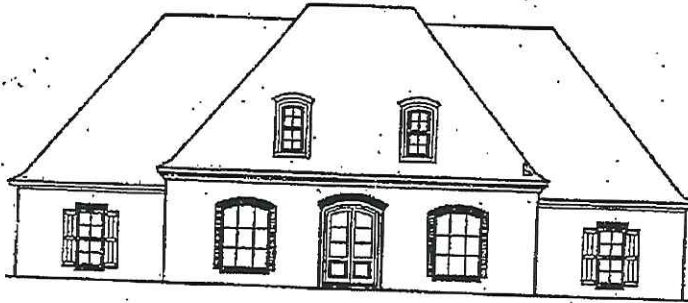


239 Katherine Drive
Flowood, MS



Suite B

Lot 65 - Katherine Dr
TRAVIS

WIDTH: 73'-2"
DEPTH: 61'-6"

HEATED AND COOLED
PORCH
TOTAL UNDER ROOF

FRAMED
4245 SQ. FT.
78 SQ. FT.
4339 SQ. FT.

WITH BRICK
4361 SQ. FT.
97 SQ. FT.
4474 SQ. FT.

PLAN NO. 4312
DESIGN STUDIO

PH. (601) 898-9710
FAX (601) 898-9712

JOHN TRAVIS