

7912-7918 *Metrose Avenue*



Todd Nathanson (818) 501-2204, todd@illicre.com, DRE# 00932779
Rachel Adams (818) 697-9375 , rachel@illicre.com, DRE# 02052879

Please visit us at:



This information has been secured from sources we believe to be reliable, but we make no representations or warranties, expressed or implied, as to the accuracy of the information. References to square footage are approximate. References to neighboring retailers are subject to change, and may not be adjacent to the vacancy being marketed either prior to, during, or after leases are signed. Lessee must verify the information and bears all risk for any inaccuracies.

17547 Ventura Blvd., Ste. 304 · Encino CA 91316 · 818.501.2212/Phone · 818.501.2202/Fax · www.illicre.com · DRE #01834124



7912-7918 *Melrose Avenue*

7916 Melrose Ave.

- Suite 1
- ±500 SF second floor space with balconies facing Melrose Ave
- Kitchenette and original hard wood flooring

Todd Nathanson (818) 501-2204, todd@illicre.com, DRE# 00932779

Rachel Adams (818) 697-9375, rachel@illicre.com, DRE# 02052879

Please visit us at:



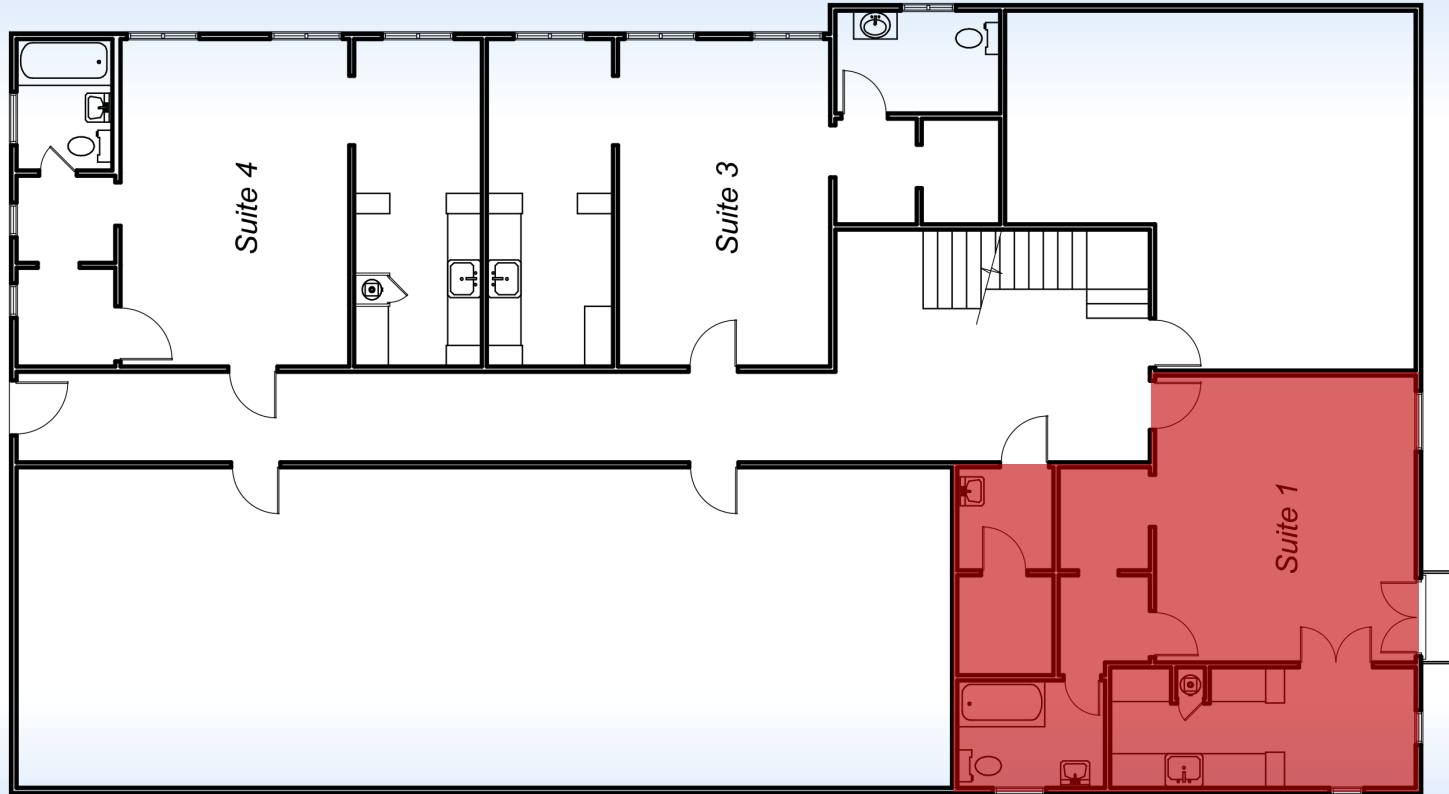
This information has been secured from sources we believe to be reliable, but we make no representations or warranties, expressed or implied, as to the accuracy of the information. References to square footage are approximate. References to neighboring retailers are subject to change, and may not be adjacent to the vacancy being marketed either prior to, during, or after leases are signed. Lessee must verify the information and bears all risk for any inaccuracies.

17547 Ventura Blvd., Ste. 304 · Encino CA 91316 · 818.501.2212/Phone · 818.501.2202/Fax · www.illicre.com · DRE #01834124



7912-7918 *Metrose Avenue*

SITE PLAN UPPER FLOOR



Todd Nathanson (818) 501-2204, todd@illicre.com, DRE# 00932779
Rachel Adams (818) 697-9375, rachel@illicre.com, DRE# 02052879

Please visit us at:



This information has been secured from sources we believe to be reliable, but we make no representations or warranties, expressed or implied, as to the accuracy of the information. References to square footage are approximate. References to neighboring retailers are subject to change, and may not be adjacent to the vacancy being marketed either prior to, during, or after leases are signed. Lessee must verify the information and bears all risk for any inaccuracies.

17547 Ventura Blvd., Ste. 304 · Encino CA 91316 · 818.501.2212/Phone · 818.501.2202/Fax · www.illicre.com · DRE #01834124



7912-7918
Metrose Avenue



Todd Nathanson (818) 501-2204, todd@illicre.com, DRE# 00932779
Rachel Adams (818) 697-9375 , rachel@illicre.com, DRE# 02052879

Please visit us at:

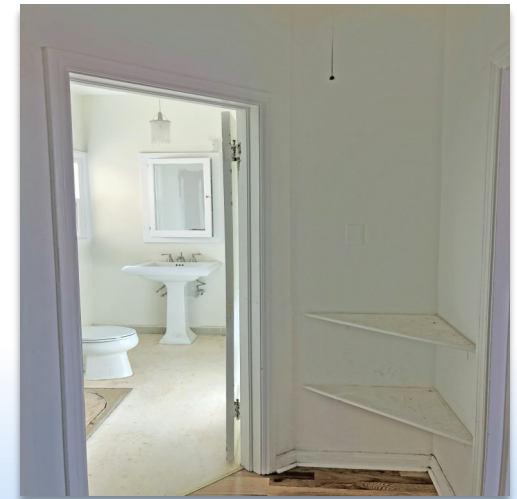


This information has been secured from sources we believe to be reliable, but we make no representations or warranties, expressed or implied, as to the accuracy of the information. References to square footage are approximate. References to neighboring retailers are subject to change, and may not be adjacent to the vacancy being marketed either prior to, during, or after leases are signed. Lessee must verify the information and bears all risk for any inaccuracies.

17547 Ventura Blvd., Ste. 304 · Encino CA 91316 · 818.501.2212/Phone · 818.501.2202/Fax · www.illicre.com · DRE #01834124



7912-7918 *Metrose Avenue*



Todd Nathanson (818) 501-2204, todd@illicre.com, DRE# 00932779
Rachel Adams (818) 697-9375, rachel@illicre.com, DRE# 02052879

Please visit us at:



This information has been secured from sources we believe to be reliable, but we make no representations or warranties, expressed or implied, as to the accuracy of the information. References to square footage are approximate. References to neighboring retailers are subject to change, and may not be adjacent to the vacancy being marketed either prior to, during, or after leases are signed. Lessee must verify the information and bears all risk for any inaccuracies.

17547 Ventura Blvd., Ste. 304 · Encino CA 91316 · 818.501.2212/Phone · 818.501.2202/Fax · www.illicre.com · DRE #01834124



7912-7918

Melrose Avenue

AREA AMENITIES

- Quiet office suite in vibrant retail and office building
- Rare opportunity to lease small office space in thriving Melrose shopping district
- Neighbor to Avant Garde, Wax and Crumbs, and Whiskers Cat Café

Bank of America

NORTH FAIRFAX AVENUE

Avant Garde Paris



REVOLVE

Fred Segal

CRESCENT HEIGHTS

MELROSE AVENUE

IMPROV COMEDY CLUB

DASH BY KARDASHIAN

JONATHAN ADLER

GLAMBOUQUE WHERE FASHION LIVES



Agent Provocateur

Beth Eluzer Kahal Jtzchok Synagogue

Todd Nathanson (818) 501-2204, todd@illicre.com, DRE# 00932779
 Rachel Adams (818) 697-9375, rachel@illicre.com, DRE# 02052879

Please visit us at:

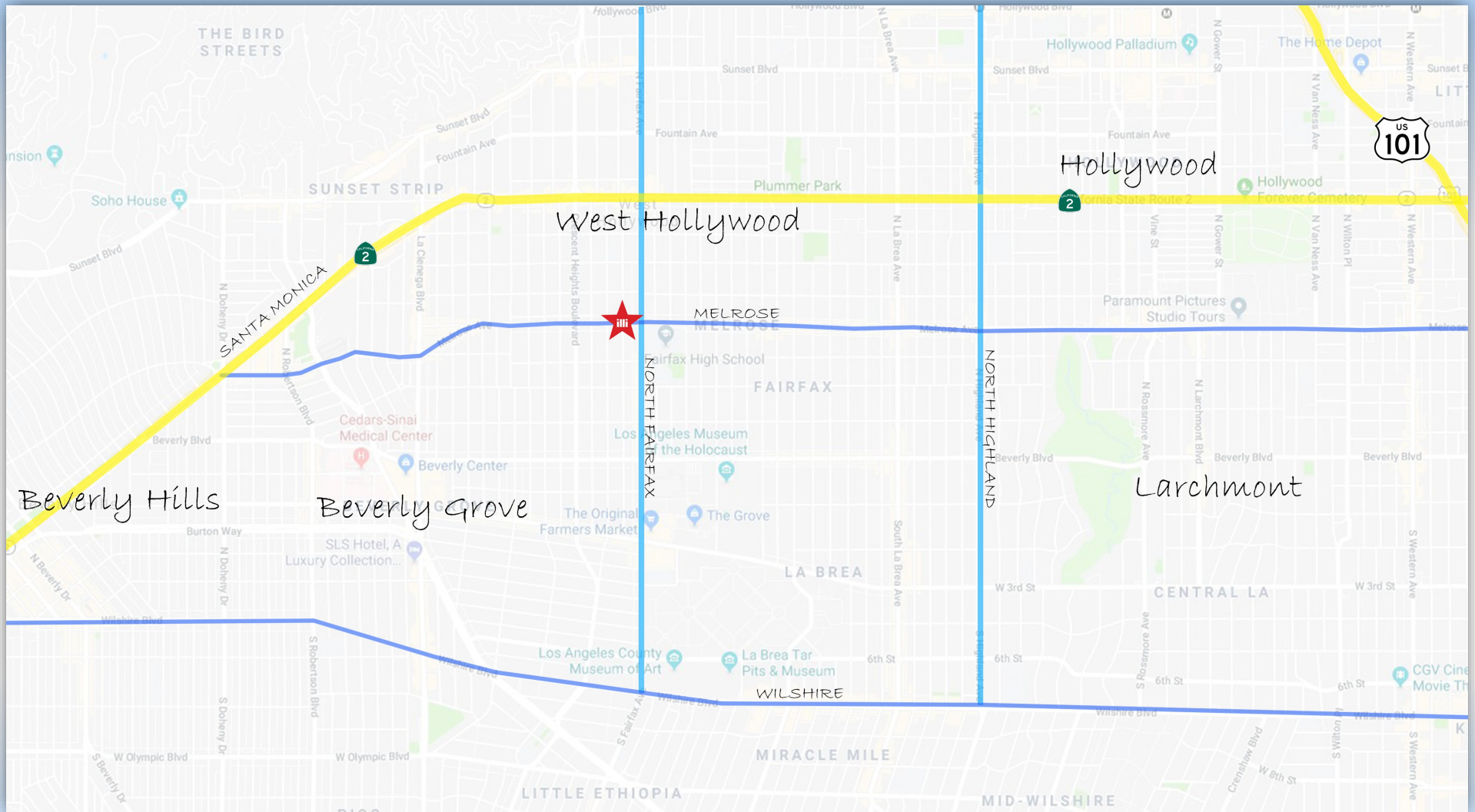


This information has been secured from sources we believe to be reliable, but we make no representations or warranties, expressed or implied, as to the accuracy of the information. References to square footage are approximate. References to neighboring retailers are subject to change, and may not be adjacent to the vacancy being marketed either prior to, during, or after leases are signed. Lessee must verify the information and bears all risk for any inaccuracies.

17547 Ventura Blvd., Ste. 304 · Encino CA 91316 · 818.501.2212/Phone · 818.501.2202/Fax · www.illicre.com · DRE #01834124



7912-7918 Melrose Avenue



Todd Nathanson (818) 501-2204, todd@illicre.com, DRE# 00932779
Rachel Adams (818) 697-9375, rachel@illicre.com, DRE# 02052879

Please visit us at:



This information has been secured from sources we believe to be reliable, but we make no representations or warranties, expressed or implied, as to the accuracy of the information. References to square footage are approximate. References to neighboring retailers are subject to change, and may not be adjacent to the vacancy being marketed either prior to, during, or after leases are signed. Lessee must verify the information and bears all risk for any inaccuracies.

17547 Ventura Blvd., Ste. 304 · Encino CA 91316 · 818.501.2212/Phone · 818.501.2202/Fax · www.illicre.com · DRE #01834124

