

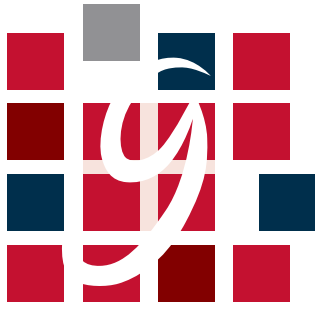
WILKINSON COURT

WREXHAM INDUSTRIAL ESTATE



Accommodation

Building	Building Type	Floor Area	
		sq ft	sq m
1	G5k	5,250	487.74
2	G6k	6,100	566.71
3	G2k	2,250	209.03
4	G2k	2,250	209.03
5	G2k	2,250	209.03
6	G2k	2,250	209.03
7	G5k	5,250	487.74
8	G2k	2,250	209.03
9	G2k	2,250	209.03
10	G2k	2,250	209.03
11	G2k	2,250	209.03
12	G2k	2,250	209.03
14	G2k	2,250	209.03
15	G5k	5,250	487.74
16	G6k	6,100	566.71
17	G5k	5,250	487.74
18	G2k	2,250	209.03
19	G2k	2,250	209.03



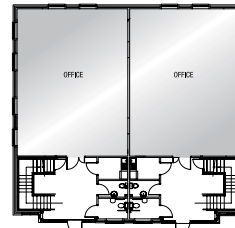
WILKINSON COURT

WREXHAM INDUSTRIAL ESTATE

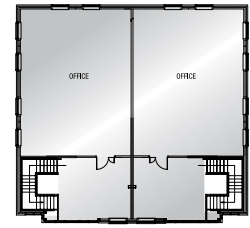
G2K



FLOOR	SQ FT	SQ M
First	1,215	112.88
Ground	1,035	96.15
TOTAL	2,250	209.03



Ground Floor

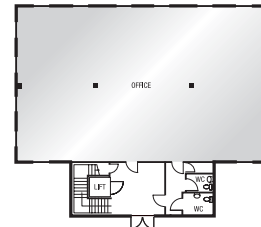


First Floor

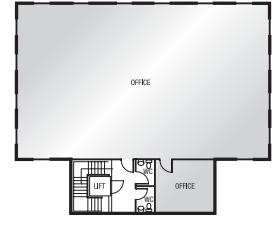
G5K



FLOOR	SQ FT	SQ M
First	2,695	250.37
Ground	2,555	237.37
TOTAL	5,250	487.74



Ground Floor

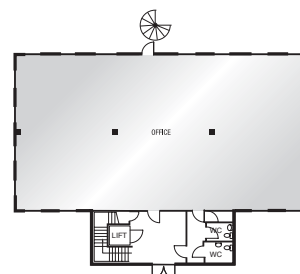


First Floor

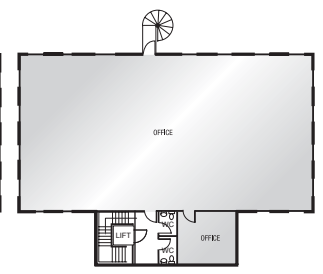
G6K



FLOOR	SQ FT	SQ M
First	3,119	289.76
Ground	2,981	276.95
TOTAL	6,100	566.71



Ground Floor



First Floor

STAD ODIWYSIANNOL
WRECSAM  **WREXHAM**
INDUSTRIAL ESTATE

MISREPRESENTATION ACT: Gladman and Legat Owen for themselves and for the vendors or lessors of this property whose agents they are, give notice that (i) these particulars are produced in good faith, are set out as a general guide only and do not constitute any part of an offer or contract. They are believed to be correct but any intending purchasers or tenants should not rely on them as statements or representations of fact but must satisfy themselves as to the correctness of each of them. Photographs of buildings are typical examples and are similar in style and configuration but are only representative of Gladman's proposed development. (ii) no person in the employment of Gladman has any authority to make or give any representation or warranty in relation to this property. Designed & produced by CW Advertising Tel 01282 858200. 10/2006.

A DEVELOPMENT BY



ALL ENQUIRIES

