

14701 S LA GRANGE ROAD

14701 S LA GRANGE ROAD, ORLAND PARK, IL 60462

OFFICE SPACE FOR LEASE



OFFERING SUMMARY

Available SF: 1,479 - 6,259 SF

Year Built: 2004

Parking Ratio: 4/1,000 SF

Access: 24-Hour Access

Utilities Separately Metered

Lease Rate: STO

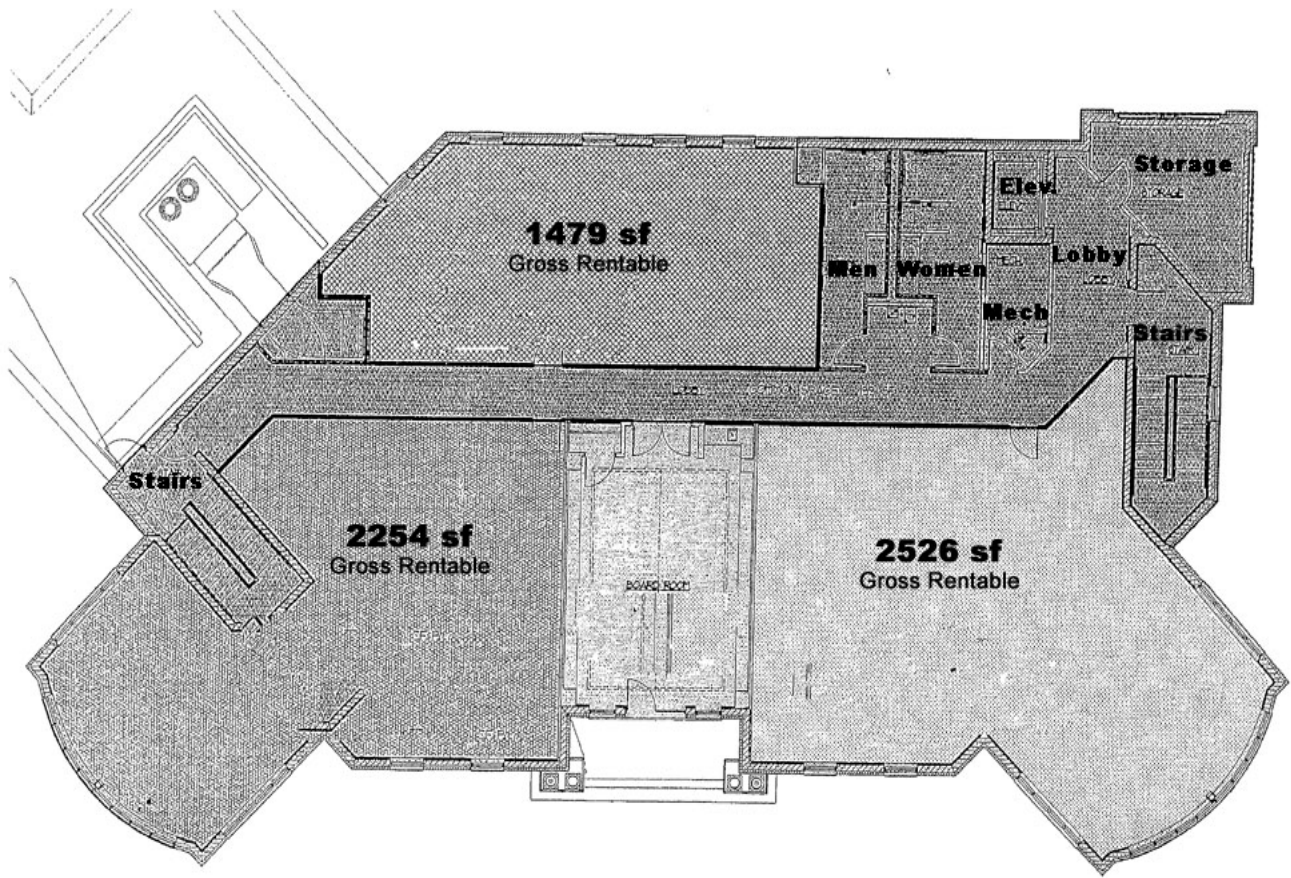
PROPERTY HIGHLIGHTS

- Bank on-site
- Currently raw space
- Expansion potential to entire floor
- Located on North entrance point to Orland Square mall

14701 S LA GRANGE ROAD

14701 S LA GRANGE ROAD, ORLAND PARK, IL 60462

AVAILABLE SPACES



| SPACE | LEASE RATE | LEASE TYPE | SIZE (SF) | TERM | COMMENTS |
|------------|------------|----------------|-----------|------------|----------|
| 201 | STO | MODIFIED GROSS | 1,479 SF | NEGOTIABLE | None |
| 202 | STO | MODIFIED GROSS | 2,254 SF | NEGOTIABLE | None |
| 203 | STO | MODIFIED GROSS | 2,526 SF | NEGOTIABLE | None |
| Full Floor | STO | MODIFIED GROSS | 6,259 SF | NEGOTIABLE | None |

14701 S LA GRANGE ROAD

14701 S LA GRANGE ROAD, ORLAND PARK, IL 60462

ADDITIONAL PHOTOS



14701 S LA GRANGE ROAD

14701 S LA GRANGE ROAD, ORLAND PARK, IL 60462

LOCATION MAPS

