

## 400 Regis Avenue

Pittsburgh, PA 15236



### Building **Size**

11,000 SF

### Available **Premises**

4,700 SF Office/Flex

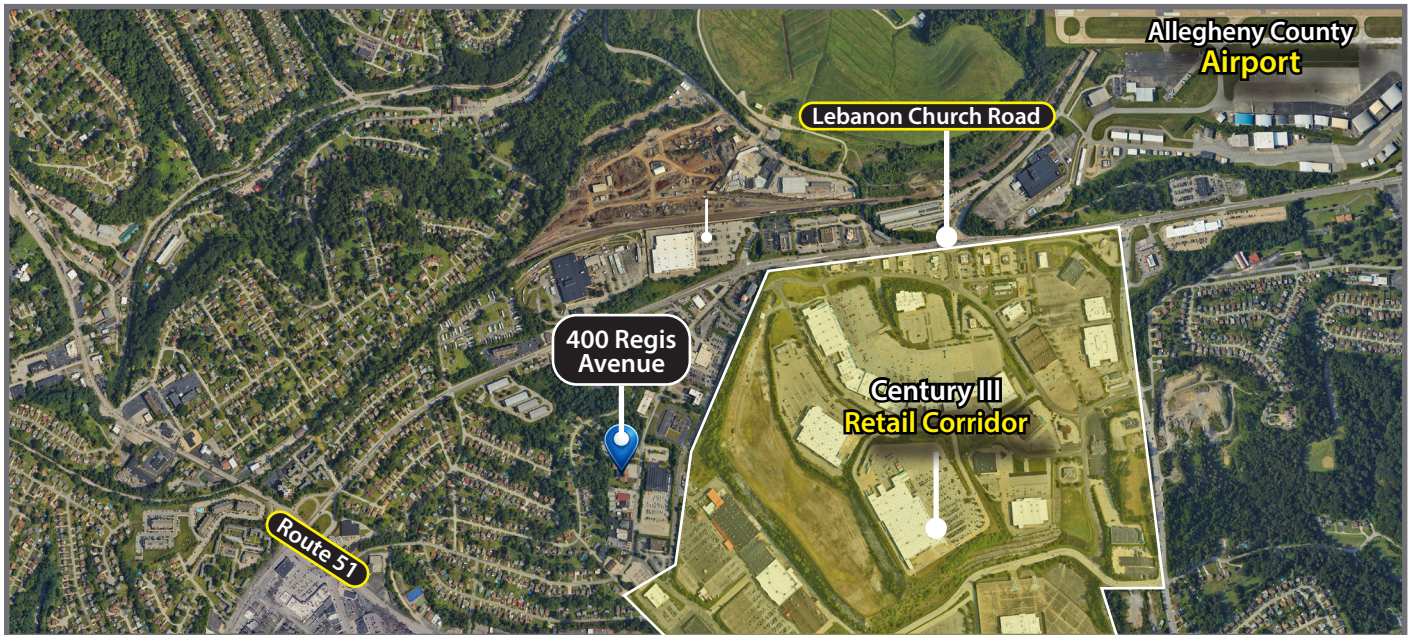
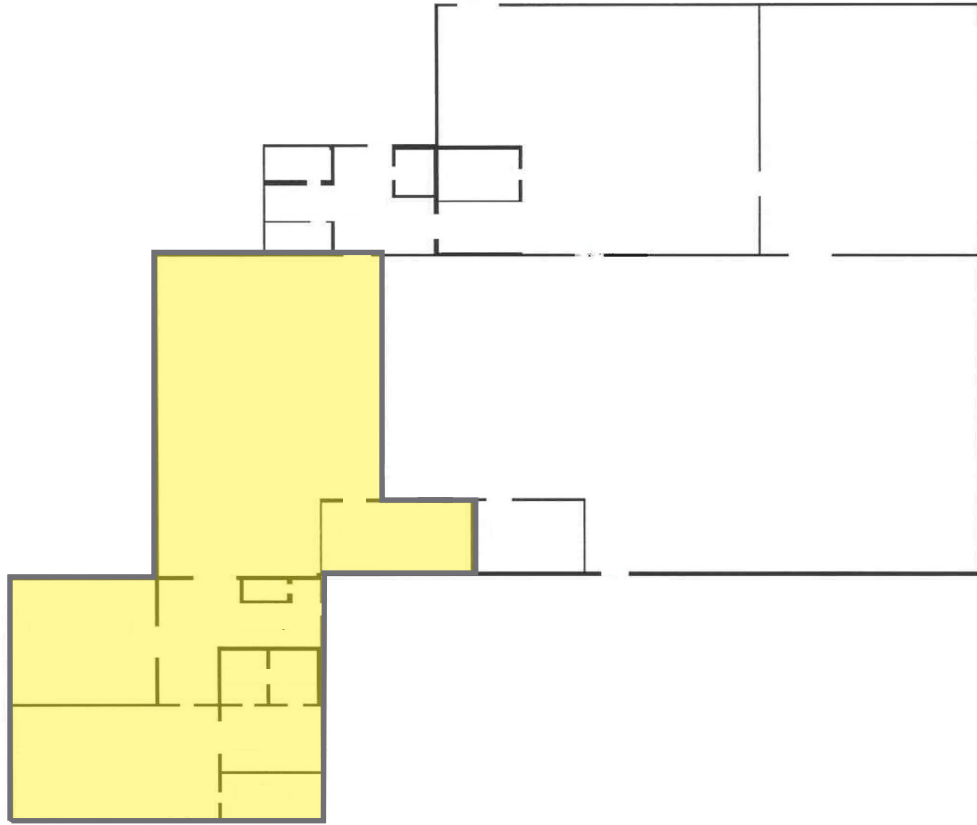
### Sublease **Term**

Through October 31, 2027

### Property **Highlights**

- High-quality existing build-out with modern finishes throughout
- Flexible layout suitable for professional services, medical, light production, or storage
- Free on-site parking for employees and visitors
- Great location along Regis Avenue with convenient access to Route 51, surrounded by numerous retail amenities





For more information please contact:

**Andrew Martz**

Associate

Oxford Realty Services, Inc.

412.261.0200, ext 3486

amartz@oxfordrealtyservices.com

**Joseph F. Tosi, SIOR**

Executive Vice President

Oxford Realty Services, Inc.

412.261.0200, ext 3471

jtosi@oxfordrealtyservices.com

**OXFORD**  
REALTY SERVICES, INC.

2865 Railroad Street, Suite 202

Pittsburgh, PA 15222

www.oxfordrealtyservices.com

Although all information furnished regarding property for sale, rental or financing is from sources deemed reliable, such information has not been verified, and no express representation is made nor is any to be implied as to the accuracy thereof, and it is submitted subject to errors, omissions, change of price, rental or other conditions, prior sale, lease or financing, or withdrawal without notice. Rental terms and all dimensions are approximate and specifications are subject to change without notice. Oxford Realty Services, Inc., an independent real estate services company.