

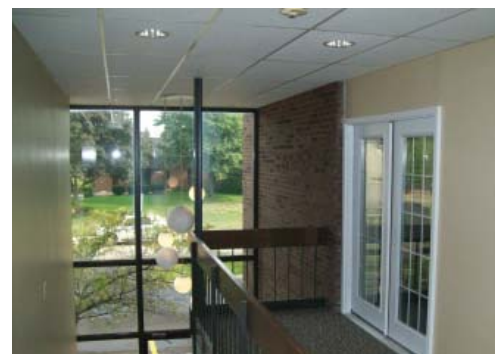
# FOR LEASE

## 1,000 - 6,500 Sq. Ft.

24543 Indoplex Farmington Hills MI



- Close Proximity to I-696, I-275, I-96 and M-5
- Additional 4,000 ± SF office/storage in lower level
- Up to 13,000 ± SF of usable square footage
- Grade level door for delivery
- Additional land for expansion
- 100% air conditioned
- Ample parking
- Great lease opportunity for office user
- Signage available
- Aggressive lease rates



Commercial Real Estate Services, Worldwide.

28400 Northwestern Hwy, 4th Floor  
Southfield, MI 48034  
248 353 0500 Main  
248 353 0501 Fax  
[www.naifarbman.com](http://www.naifarbman.com)

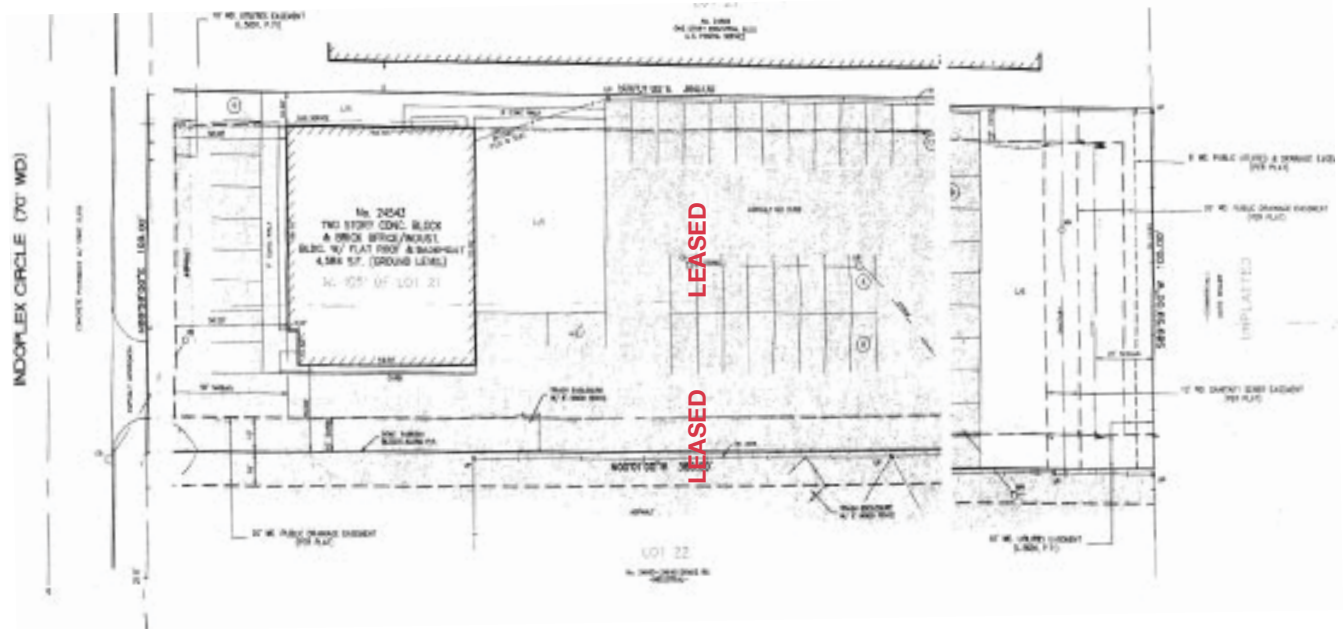
### Contact Information:

**Brian Crawford**  
Phone 248 351 4376  
Fax 248 784 7129  
[Crawford@farbman.com](mailto:Crawford@farbman.com)

The information contained herein has been given to us by the owner of the property or other sources we deem reliable. We have no reason to doubt its accuracy, but we do not guarantee it. All information should be verified prior to purchase or lease

# SITE PLAN/FLOOR PLAN

24543 Indoplex Farmington Hills MI



Contact Information:

**NAI**Farbman  
Commercial Real Estate Services, Worldwide.

**Brian Crawford**  
Phone 248 351 4376  
Fax 248 784 7129  
Crawford@farbman.com

Brian Crawford

[www.naifarbman.com](http://www.naifarbman.com)