

# MULTI-FAMILY LAND FOR SALE

## 2614 WHITCOMB STREET

RICHMOND, VA

23223



2614 WHITCOMB ST



## FEATURES

- + Multifamily development opportunity in the City of Richmond
- + Excellent access to Interstate 64, Downtown CBD and all points of the Richmond MSA
- + On GRTC Bus Route (#43)
- + R-53 Zoning
- + Adjacent to future mixed income redevelopment of Whitcomb Court
- + +/- 1.8 acres:
  - Parcel 1 - #E0120171001 +/- .6 acres  
2614 Whitcomb Street
  - Parcel 2 - #E0120171021 +/- 1.2 acres  
2011 Anniston Street
- + Ideal for Low Income Housing Tax Credit
- + Sale Price: \$299,000



## CONTACT US

### CHARLES WENTWORTH

Vice President

+1 804 267 7223

charles.wentworth@cbre-richmond.com

### PEYTON COX

Associate

+1 804 441 7711

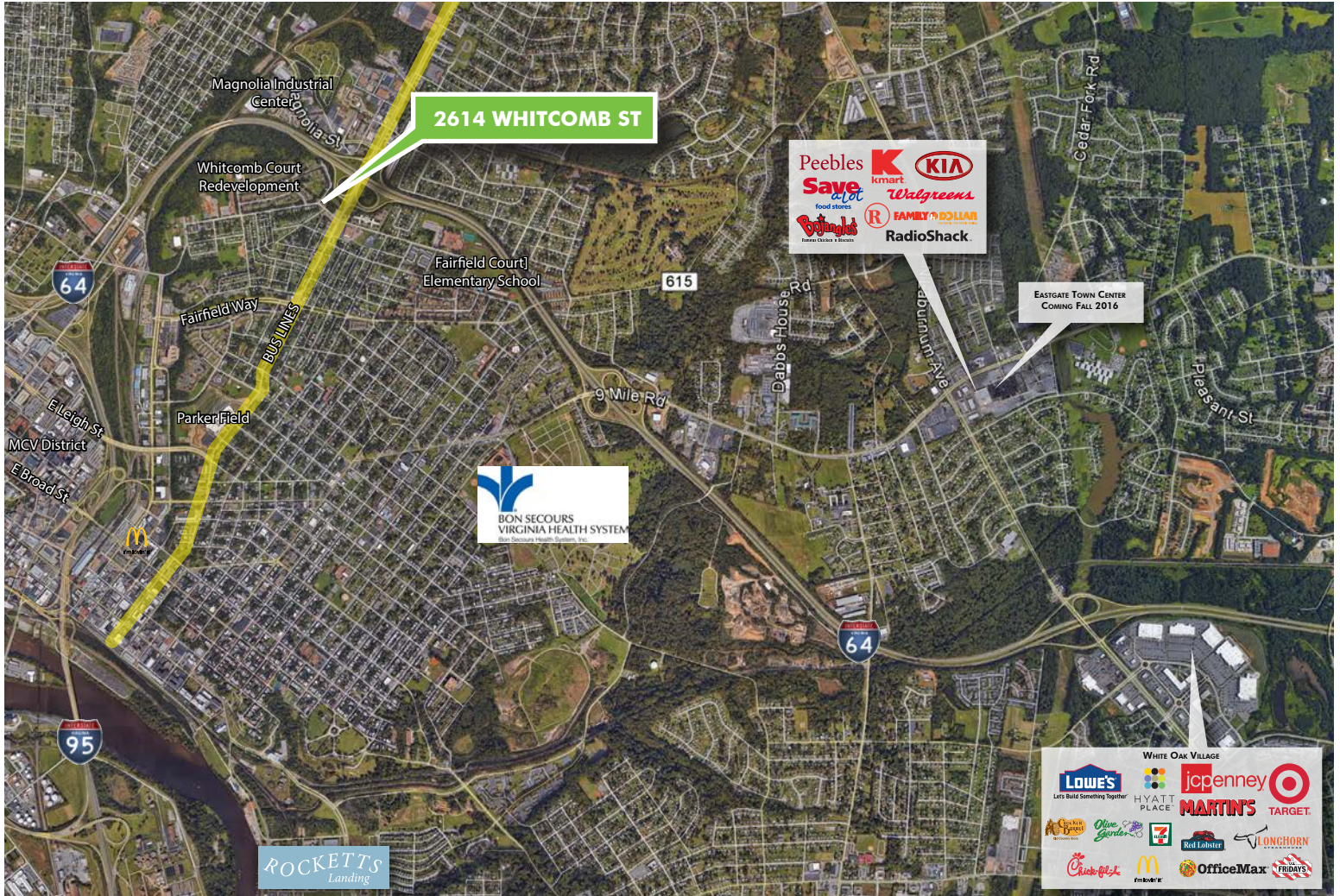
peyton.cox@cbre-richmond.com

# FOR SALE MULTI-FAMILY LAND

2614 WHITCOMB ST  
RICHMOND, VA  
23233



## LOCATION



All marks displayed in this document are the property of their respective owners



## CONTACT US

### CHARLES WENTWORTH

Vice President  
+1 804 267 7223  
charles.wentworth@cbre-richmond.com

### PEYTON COX

Associate  
+1 804 441 7711  
peyton.cox@cbre-richmond.com

# FOR SALE MULTI-FAMILY LAND

2614 WHITCOMB ST  
RICHMOND, VA  
23233



## SURVEY



## 2015 TRAFFIC COUNTS

**US 360 - MECHANICSVILLE TNPK** 12,000 VPD

2016 ESTIMATED DEMOGRAPHICS	1 MILE	3 MILE	5 MILE
<b>POPULATION</b>	17,016	118,215	229,734
<b>AVERAGE HOUSEHOLD INCOME</b>	\$33,171	\$54,827	\$57,977
<b>DAYTIME POPULATION</b>	3,591	112,723	179,625



## CONTACT US

### CHARLES WENTWORTH

Vice President  
+1 804 267 7223  
charles.wentworth@cbre-richmond.com

### PEYTON COX

Associate  
+1 804 441 7711  
peyton.cox@cbre-richmond.com

© 2017 CB Richard Ellis of Virginia, Inc. ("CBRE") The information contained in this document has been obtained from sources believed reliable. While CBRE does not doubt its accuracy, CBRE has not verified it and makes no guarantee, warranty or representation about it. It is your responsibility to independently confirm its accuracy and completeness. Any projections, opinions, assumptions or estimates used are for example only and do not represent the current or future performance of the property. The value of this transaction to you depends on tax and other factors which should be evaluated by your tax, financial and legal advisors. You and your advisors should conduct a careful, independent investigation of the property to determine to your satisfaction the suitability of the property for your needs. CBRE and the CBRE logo are service marks of CBRE, Inc., and/or its affiliated or related companies in the United States and other countries. All other marks displayed on this document are the property of their respective owners.

Photos herein are the property of their respective owners and use of these images without the express written consent of the owner is prohibited.