

THE HALLE BUILDING



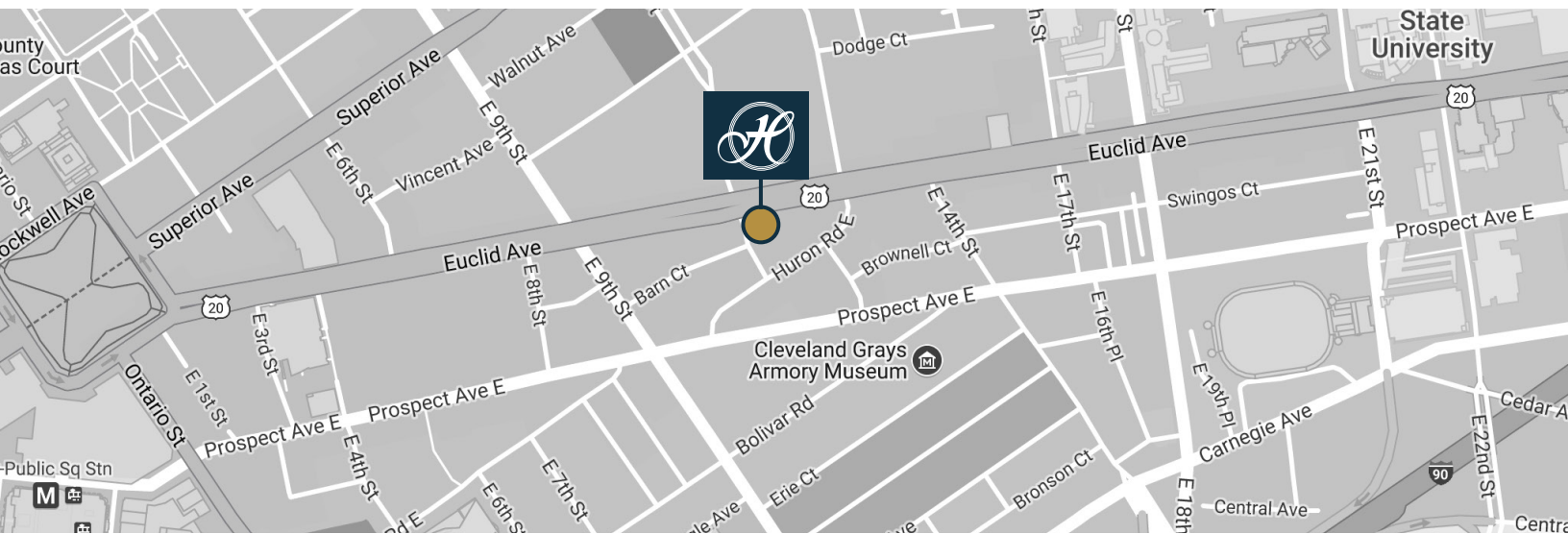
1228 EUCLID AVENUE
CLEVELAND, OH

The
K&D
Group

CBRE



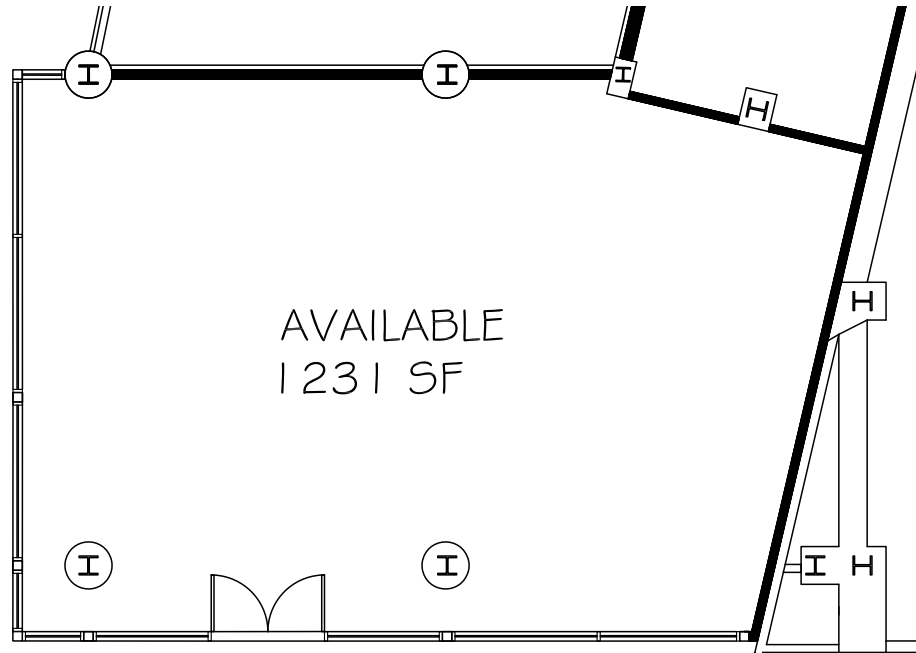
- Great Playhouse Square Location
- Amenities Include:
Conference Facility, Fitness Center and Lounge
- Floor six (6) through eleven (11) are being converted to high-end residential



Available Office/Retail Suites

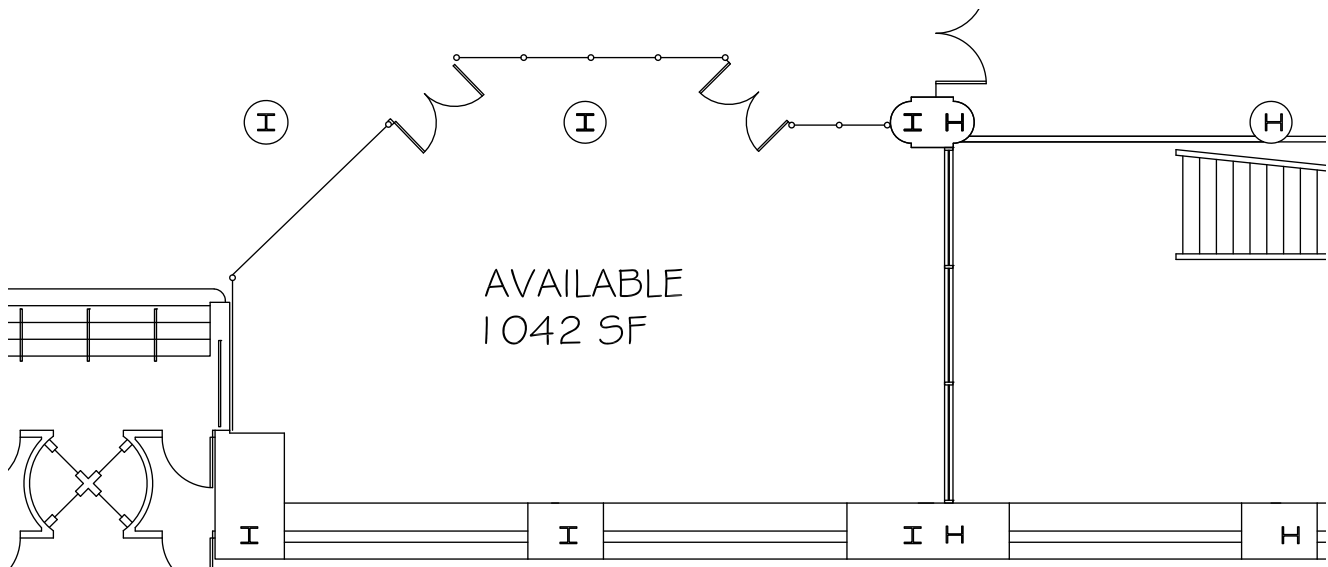
FIRST FLOOR INTERIOR

±1,231 SF



FIRST FLOOR HURON FRONTAGE

±1,042 SF



THE HALLE BUILDING



Contact:

CONOR COAKLEY

216.658.6123

conor.coakley@cbre.com

ISABEL DEROBERTS

216.363.6476

isabel.deroberts@cbre.com

The
K&D
Group

CBRE

© 2018 CBRE, Inc. All rights reserved. This information has been obtained from sources believed reliable, but has not been verified for accuracy or completeness. Any projections, opinions, or estimates are subject to uncertainty. The information may not represent the current or future performance of the property. You and your advisors should conduct a careful, independent investigation of the property and verify all information. Any reliance on this information is solely at your own risk. CBRE and the CBRE logo are service marks of CBRE, Inc. and/or its affiliated or related companies in the United States and other countries. All other marks displayed on this document are the property of their respective owners. Photos herein are the property of their respective owners and use of these images without the express written consent of the owner is prohibited. PMStudio_March2018. Licensed Real Estate Broker

