

PARCEL A PARKING CALCULATIONS - PER COUNTY

BUILDING A FIRST FLOOR AREA = 6,688 SQ. FT. (ASSUMED USE RESTAURANT)
 REQUIRED PARKING 1/500 = 14 PARKING SPACES
 BUILDING A SECOND FLOOR AREA = 6,688 SQ. FT. (ASSUMED USE OFFICE)
 REQUIRED PARKING 1/300 = 23 PARKING SPACES
 TOTAL REQUIRED PARKING = 37 PARKING SPACES
 PROVIDED PARKING = 68 PARKING SPACES
 INCLUDING 4 HANDICAP SPACES

PARCEL A PARKING CALCULATIONS - PER OWNER

BUILDING A FIRST FLOOR AREA = 6,688 SQ. FT. (ASSUMED USE RESTAURANT)
 REQUIRED PARKING 1/100 = 67 PARKING SPACES
 BUILDING A SECOND FLOOR AREA = 6,688 SQ. FT. (ASSUMED USE OFFICE)
 REQUIRED PARKING 1/300 = 23 PARKING SPACES
 TOTAL REQUIRED PARKING = 90 PARKING SPACES
 PROVIDED PARKING = 88 PARKING SPACES
 INCLUDING 4 HANDICAP SPACES

PARCEL A : WALL / BUILDING FRONTAGE

NET FRONTAGE = 188 FT.
 REQ'D 80% = 134.4 FT.
 PROVIDED 135 FT.

PARCEL B PARKING CALCULATIONS - PER COUNTY

BUILDINGS B,C,D,E AREA = 17,630 SQ. FT. (ASSUMED USE RESTAURANT)
 REQUIRED PARKING 1/500 = 35 PARKING SPACES
 PROVIDED PARKING = 127 PARKING SPACES
 INCLUDING 6 HANDICAP SPACES

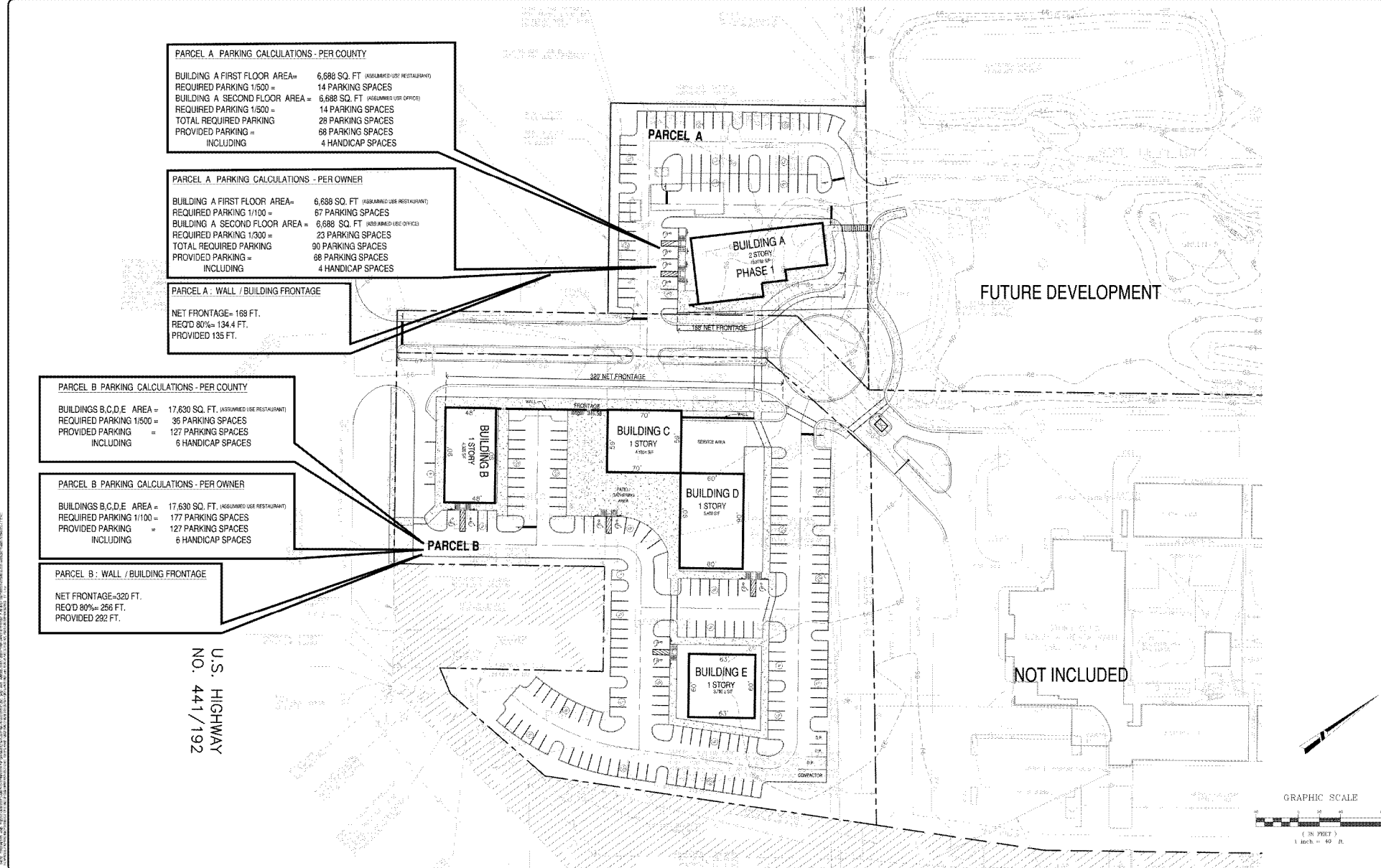
PARCEL B PARKING CALCULATIONS - PER OWNER

BUILDINGS B,C,D,E AREA = 17,630 SQ. FT. (ASSUMED USE RESTAURANT)
 REQUIRED PARKING 1/100 = 177 PARKING SPACES
 PROVIDED PARKING = 127 PARKING SPACES
 INCLUDING 6 HANDICAP SPACES

PARCEL B : WALL / BUILDING FRONTAGE

NET FRONTAGE = 320 FT.
 REQ'D 80% = 256 FT.
 PROVIDED 292 FT.

U.S. HIGHWAY
 NO. 441/192



| | | | | | |
|-----------|-------------|----------|----------|-------|----|
| DESIGN | MY | F.B. NO. | | SEC. | |
| DRAWN | DM | PAGE | | TWP. | |
| CHECKED | MV | SCALE | AS SHOWN | RANGE | |
| CAD | (see stamp) | DATE | | DATE | BY |
| REVISIONS | | | | | |

8 BROADWAY, SUITE 104, KISSIMEE, FLORIDA 34741-5708
 PHONE: (407) 847-9433 FAX: (407) 847-2499
 ENG. CERT. OF ARCHT. NO. 3283/SUR. CERT. OF ARCHT. NO. 3270

Hanson, Walter & Associates, Inc.

FLAMINGO COMMERCIAL CENTER

SITEPLAN

SHEET NO.
 03 of 04
 JOB NO. 4461-09