

# THE TERRACES

---

2300 CONTRA COSTA BLVD., PLEASANT HILL, CA 94523



# THE TERRACES

2300 CONTRA COSTA BLVD., PLEASANT HILL, CA 94523

## PROPERTY HIGHLIGHTS

- ◆ Free abundant covered and surface parking
- ◆ On-site property management office
- ◆ On-site conference room
- ◆ On-site fitness facility
- ◆ Locker room and shower facilities
- ◆ Walking distance from local cuisine
- ◆ Close proximity to I-680 on/off ramps

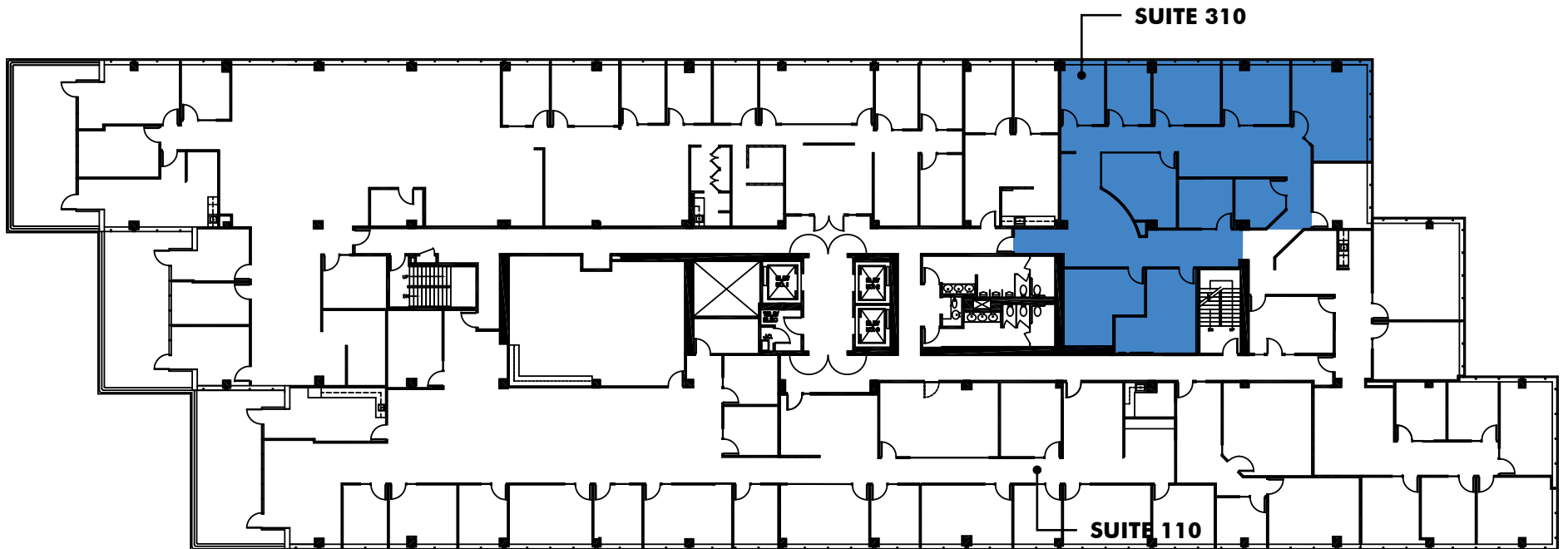


# THE TERRACES

2300 CONTRA COSTA BLVD., PLEASANT HILL, CA 94523

## FLOOR PLANS

**SUITE 310** ±3,373 RSF



**THIRD FLOOR**

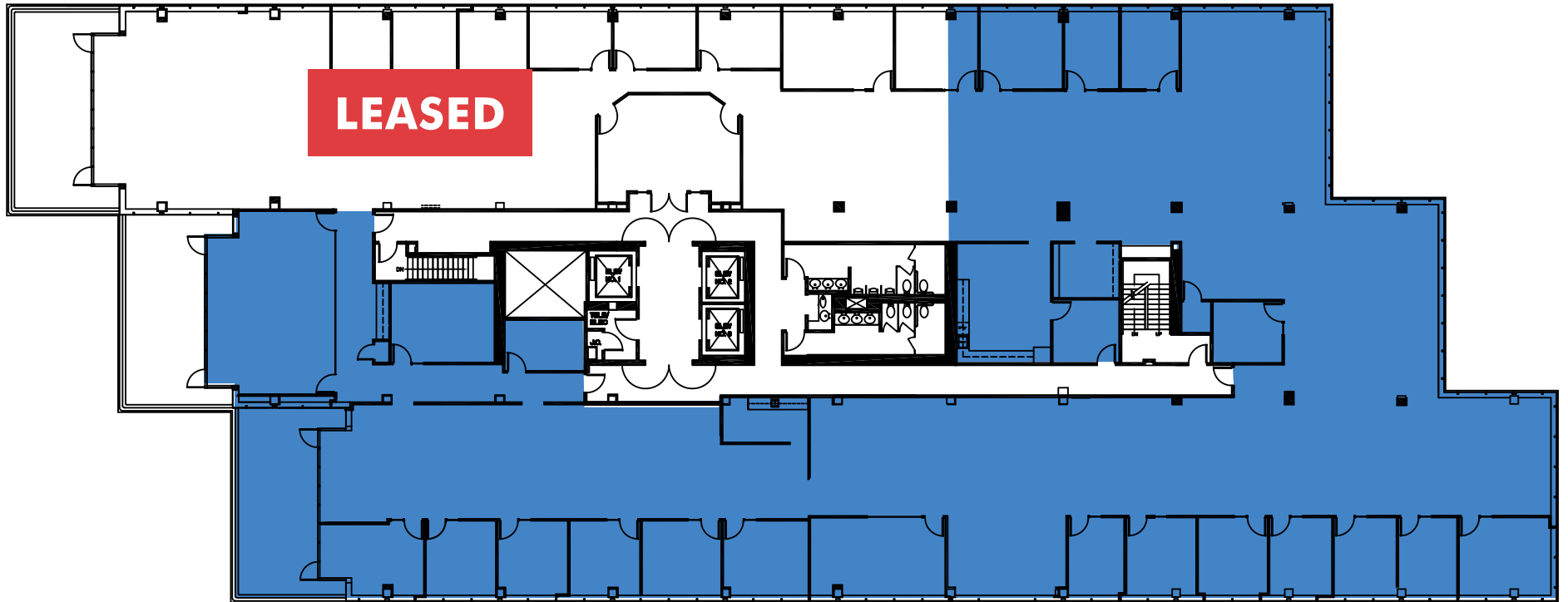
NOT TO SCALE

# THE TERRACES

2300 CONTRA COSTA BLVD., PLEASANT HILL, CA 94523

## FLOOR PLANS

6TH FLOOR 14,858 SF DIVISIBLE

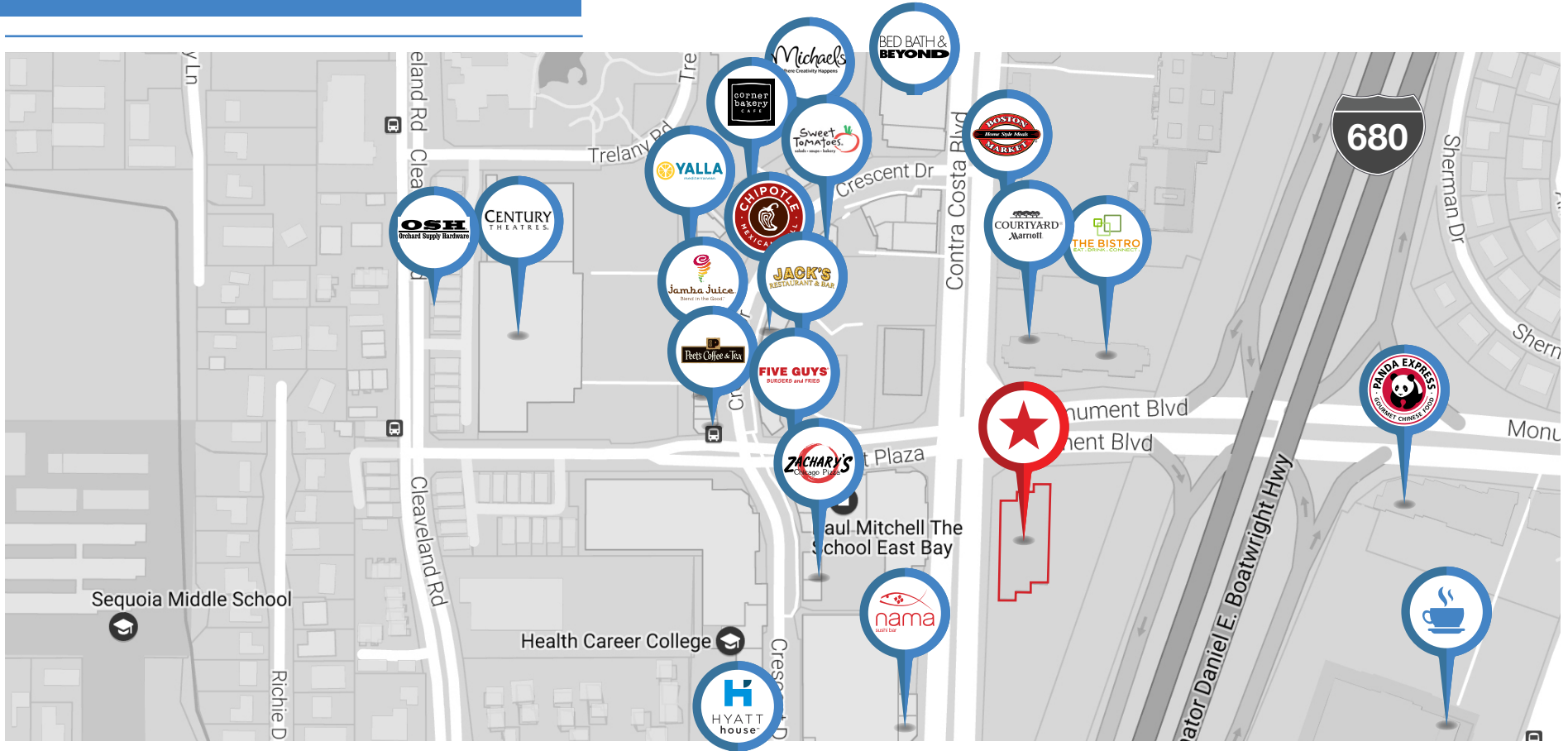


NOT TO SCALE

# THE TERRACES

2300 CONTRA COSTA BLVD., PLEASANT HILL, CA 94523

## AMENITIES MAP



# THE TERRACES

2300 CONTRA COSTA BLVD., PLEASANT HILL, CA 94523

## LEASING INFORMATION:

### **Adam Ebner**

#### **First Vice President**

+1 925 251 4606

[adam.ebner@cbre.com](mailto:adam.ebner@cbre.com)

Lic. 01213890

### **Kirk Beebe**

#### **Senior Vice President**

+1 925 251 4611

[kirk.beebe@cbre.com](mailto:kirk.beebe@cbre.com)

Lic. 00854169



© 2018 CBRE, Inc. The information contained in this document has been obtained from sources believed reliable. While CBRE, Inc. does not doubt its accuracy, CBRE, Inc. has not verified it and makes no guarantee, warranty or representation about it. It is your responsibility to independently confirm its accuracy and completeness. Any projections, opinions, assumptions or estimates used are for example only and do not represent the current or future performance of the property. The value of this transaction to you depends on tax and other factors which should be evaluated by your tax, financial and legal advisors. You and your advisors should conduct a careful, independent investigation of the property to determine to your satisfaction the suitability of the property for your needs.

CBRE and the CBRE logo are service marks of CBRE, Inc. and/or its affiliated or related companies in the United States and other countries. All other marks displayed on this document are the property of their respective owners.

Photos herein are the property of their respective owners and use of these images without the express written consent of the owner is prohibited. JW 2/7/17.bx



# CBRE