

Subject Property



114th & Slide Garden Office

5320 114th Street | Lubbock, TX 79424

Property Features

This beautiful, Class A Garden Office provides excellent frontage to 114th Street with ample parking and easy access. The open concept office space features a 2nd floor office/loft, 2 additional offices or patient rooms, work space, a kitchenette, two restrooms, luxury finishes, high ceilings, excellent storage and natural light. Please do not disturb the current tenant.

Offering Summary

SPACE AVAILABLE	2,090 SF
AVAILABLE	October 2023
LEASE RATE	\$22/SF + NNNS
LEASE TERM	5 years

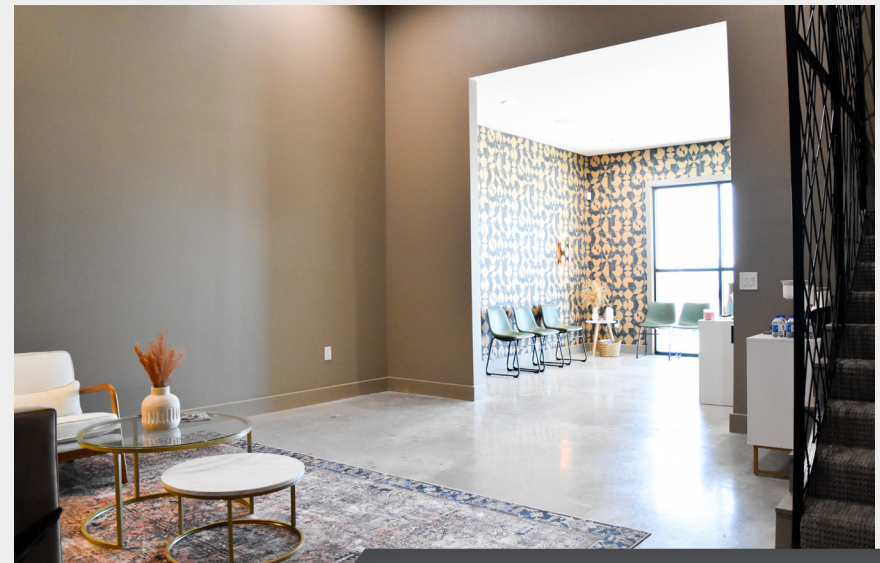
NO WARRANTY OR REPRESENTATION, EXPRESS OR IMPLIED, IS MADE AS TO THE ACCURACY OF THE INFORMATION CONTAINED HEREIN, AND THE SAME IS SUBMITTED SUBJECT TO ERRORS, OMISSIONS, CHANGE OF PRICE, RENTAL OR OTHER CONDITIONS, PRIOR SALE, LEASE OR FINANCING, OR WITHDRAWAL WITHOUT NOTICE, AND OF ANY SPECIAL LISTING CONDITIONS IMPOSED BY OUR PRINCIPALS NO WARRANTIES OR REPRESENTATIONS ARE MADE AS TO THE CONDITION OF THE PROPERTY OR ANY HAZARDS CONTAINED THEREIN ARE ANY TO BE IMPLIED.

Joseph Magby
joe@naiwheelhouse.com
+1 806 200 3244
naiwheelhouse.com

Shannon Powell
shannon@naiwheelhouse.com
+1 281 788 1758
naiwheelhouse.com

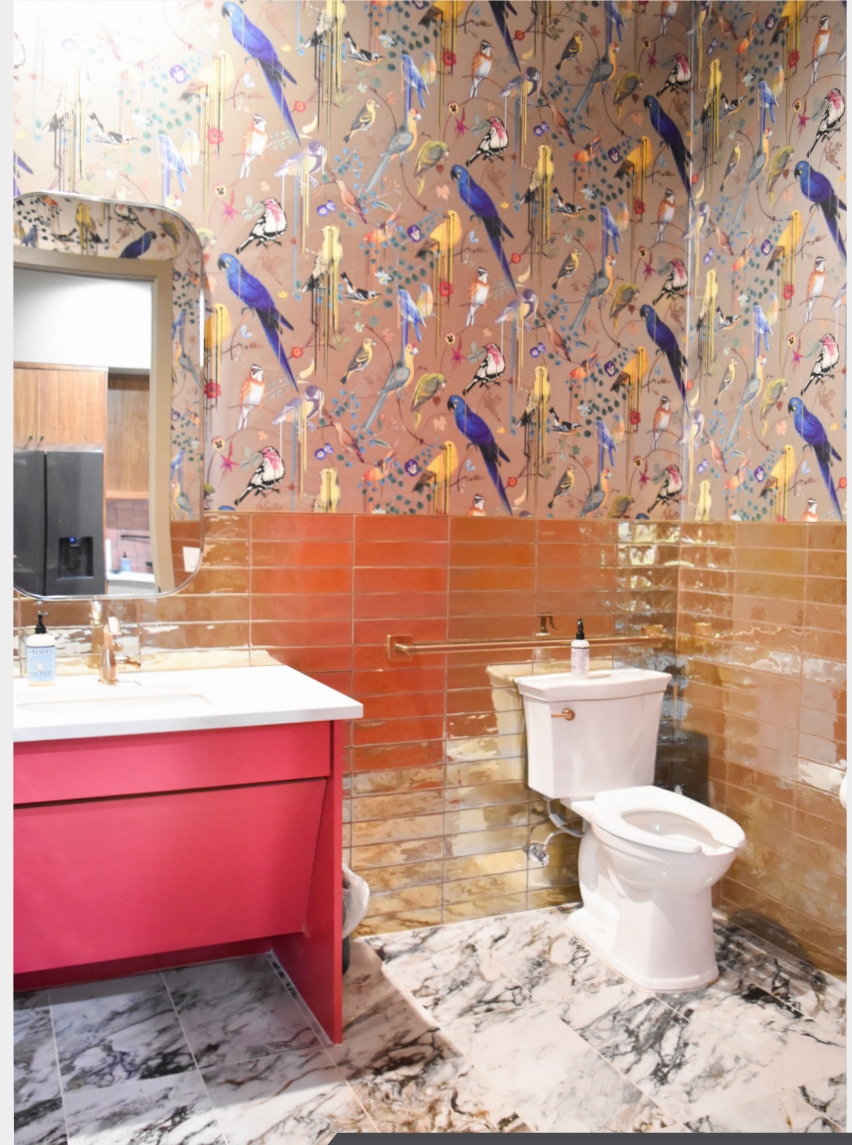
FOR LEASE

Large Reception Area with Overflow or Flex Space



FOR LEASE

Conference Room, Work Station, Break Area & 2 Bathrooms



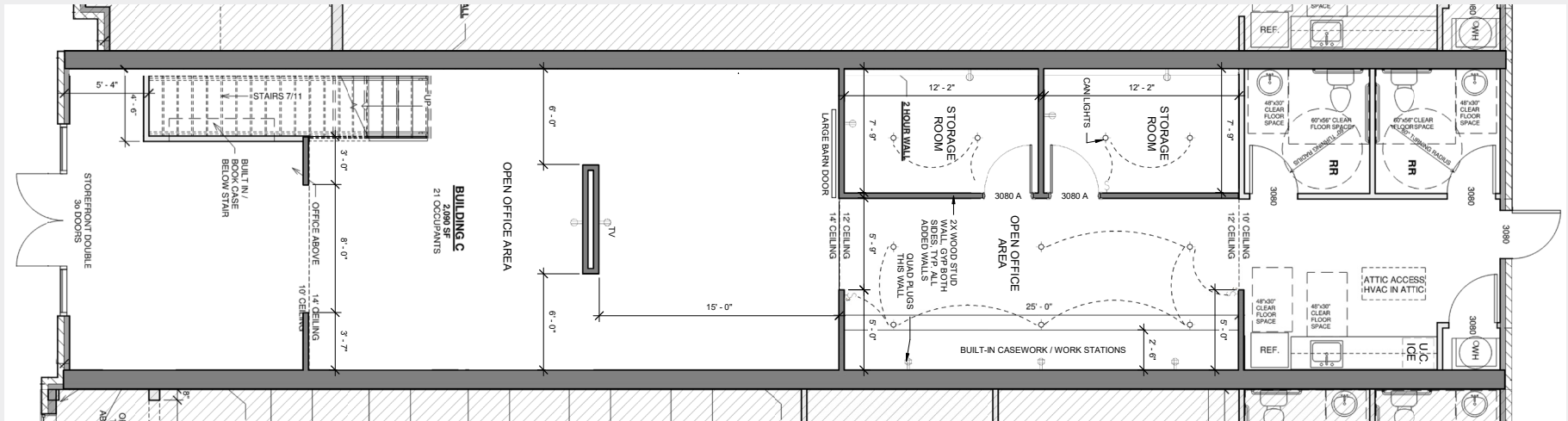
FOR LEASE

2 Offices or Patient Rooms and 1 Additional Office Upstairs

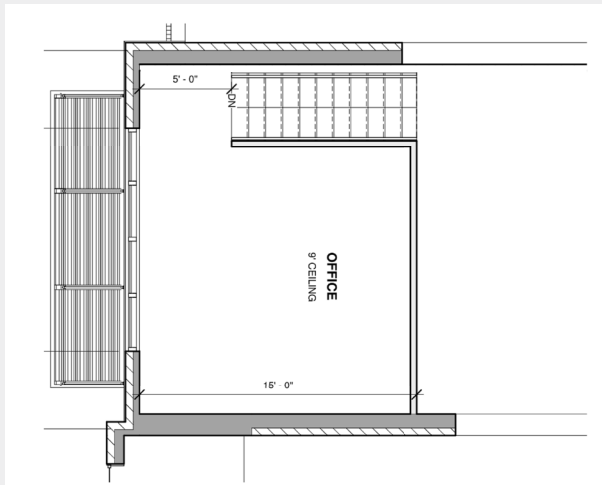


FOR LEASE

First Floor Layout



Second Floor Layout



FOR LEASE



Demographic Summary

	1 MILE	3 MILES	5 MILES
POPULATION	6,303	59,906	136,979
AVG HH INCOME	\$130,804	\$120,834	\$100,655
HOUSEHOLDS	2,422	23,288	54,513
MEDIAN AGE	36.3	39.1	36.9

Location Advantages

- Located near to fast-developing intersections of 114th & Slide and 114th & Quaker
- In a growing residential and commercial area with many new homes and multi-family developments being built every year
- Surrounded by multiple high-end, new construction garden offices with excellent co-tenants and neighbors