

DANE'S YARD

CREATIVE
QUARTER

1 COOPERAGE YARD

1 Cooperage Yard sits at the heart of Dane's Yard's network of historic yards and alleyways. The gym at ground floor provides state of the art exercise facilities and showers and lockers for the keen cyclists and runners amongst your ranks.

NIA

	GYM
Ground	
Floor 1	5,457 sqft / 507 m ²
Floor 2	5,476 sqft / 508.7 m ²
Floor 3	4,081 sqft / 379.1 m ²
Total	15,014 sqft / 1,394.8 m ²

KEY FEATURES

TRIPLE ASPECT

HIGH CEILINGS

SOUTH FACING ROOF TERRACE

GYM AT GROUND FLOOR LEVEL

CAT A FIT OUT



LOCATION



24/7 ACCESS



ENERGY EFFICIENT
HEATING NETWORK



AIR CONDITIONING



DDA COMPLIANT



TERRACE



ROOF TERRACE



UP TO 10GB SUPER
FAST FIBRE



SHOWER FACILITIES



WC UNISEX SUPERLOO



NATURAL VENTILATION



SECURE BICYCLE
STORAGE



DISABLED PARKING

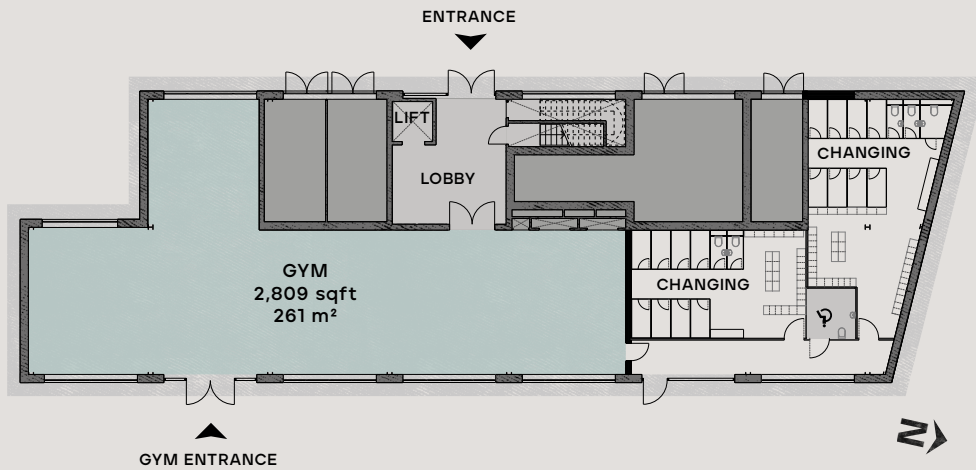


GYM FACILITIES

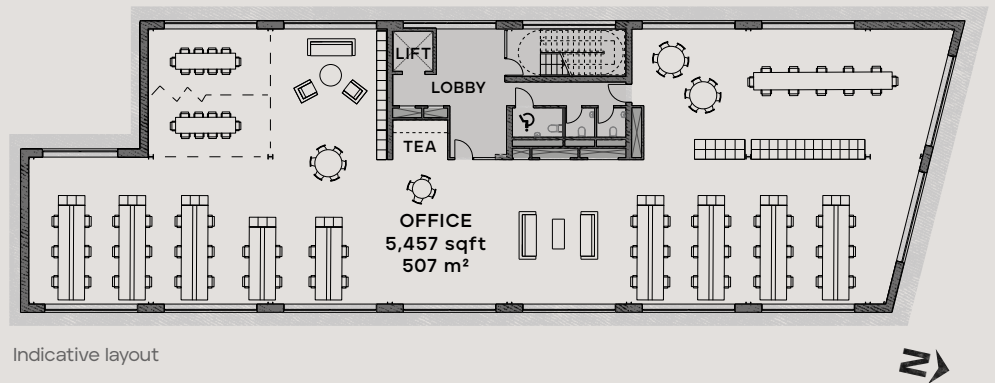
SUGAR HOUSE
ISLAND

FLOOR PLANS

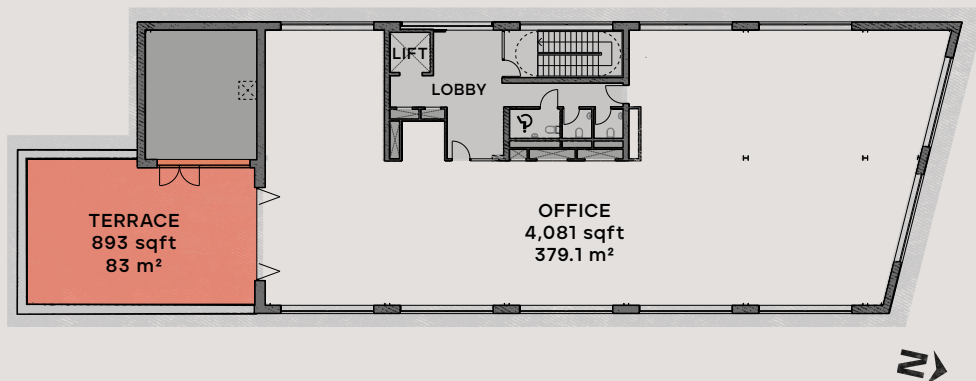
Ground floor



1st floor & 2nd floor



Third floor



- Office Space
- Reception And Core Space
- Plant Space
- Terrace
- Gym

Not to scale, for indicative purposes only