



2907 Providence Rd
Suite 304
Charlotte, NC 28211

T. 704.342.9876
F. 704.334.4246

wgmdesign.com

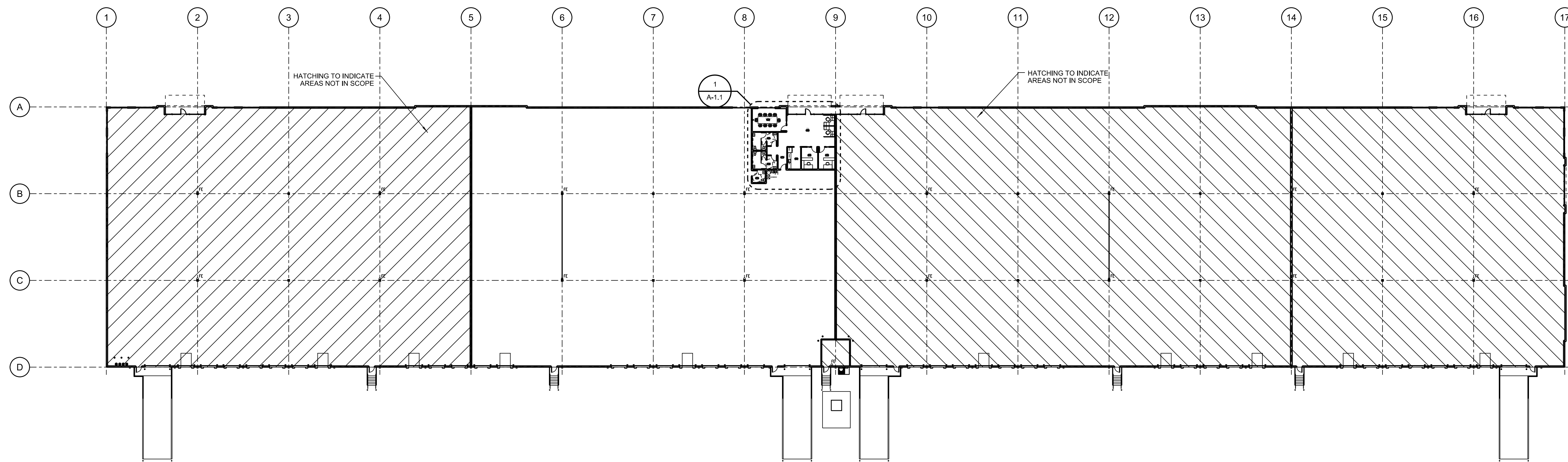


SL Management Group
Southeast

PALM BEACH
INDUSTRIAL PARKS:

701A BOUTWELL ROAD
LAKE WORTH, FLORIDA

"SPEC OFFICE
UPFIT"



1 OVERALL FLOOR PLAN
 SCALE: 1/32" = 1'-0" OVERALL= 126,244 SF

REV.	DATE	DESCRIPTION

DATE:
OCTOBER 10, 2023

PROJECT NO.:
22000.09

TITLE:

OVERALL
FLOOR PLAN

DRAWING NO.

A-1.0



2907 Providence Rd
Suite 304
Charlotte, NC 28211

T. 704.342.9876
F. 704.334.4246

wgmdesign.com



PALM BEACH INDUSTRIAL PARKS:

701A BOUTWELL ROAD
LAKE WORTH, FLORIDA

"SPEC OFFICE UPFIT"

REV. DATE DESCRIPTION

DATE:
OCTOBER 10, 2023

PROJECT NO.:
22000.09

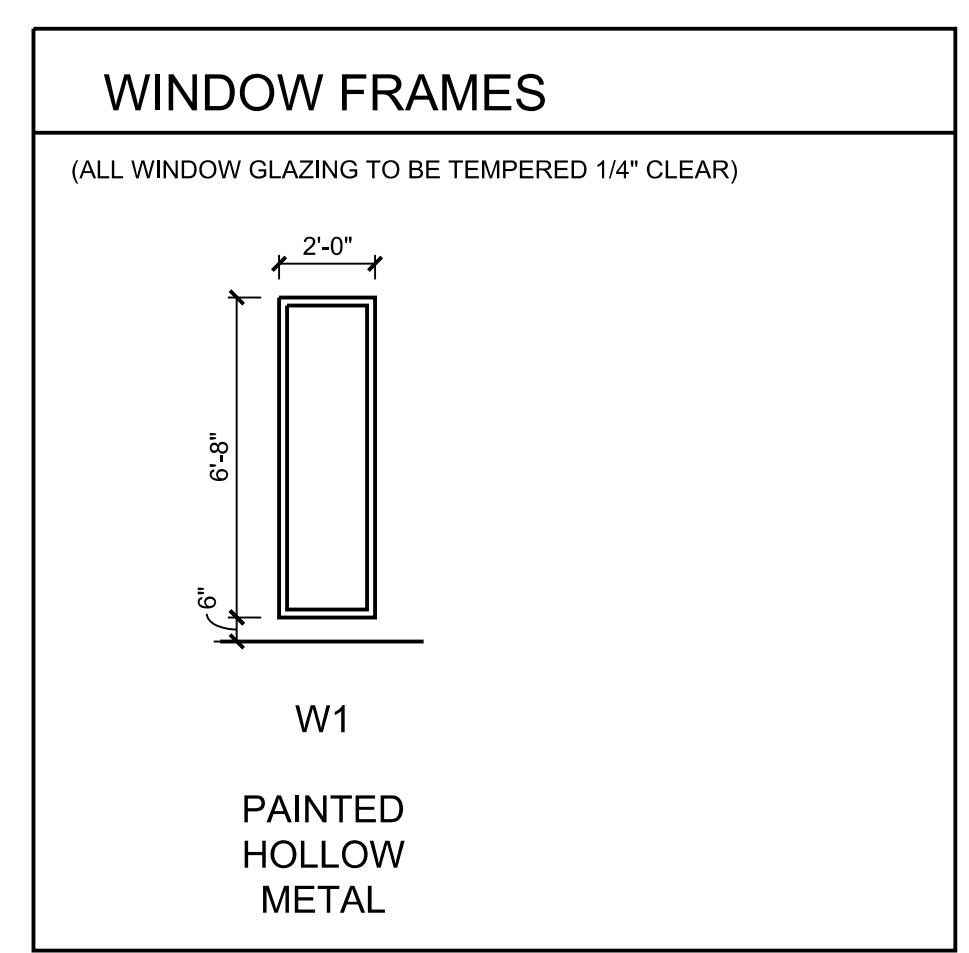
TITLE:
OFFICE PLANS,
DETAILS & R.C.P.

DRAWING NO.

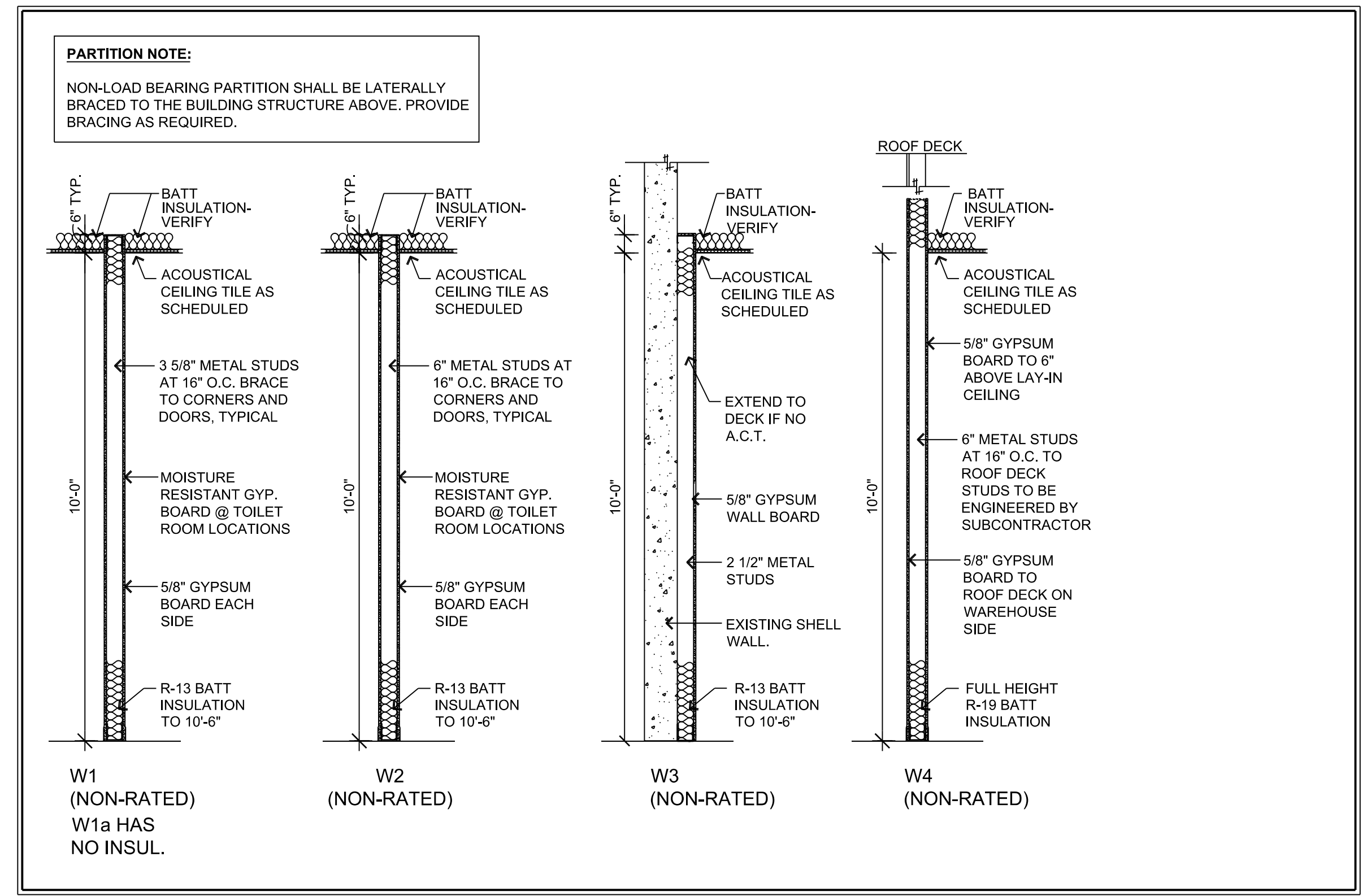
A-1.1

DOOR SCHEDULE									
DOOR NUMBER	SIZE (WxH)	DOOR LEAF			FRAME		HARDWARE TYPE		REMARKS
		ELEVA.	TYPE	RATING	CLOSER	ELEVA.			
FIRST FLOOR									
100A	EXISTING								COORDINATE CARD READER
101A	3'-0" W X 7'-0" H	D2	SC	-	YES	F1	HM	HW-5	NOTE 7
102A	3'-0" W X 7'-0" H	D3	SC	-	-	F1	HM	HW-1	
103A	3'-0" W X 7'-0" H	D3	SC	-	-	F1	HM	HW-1	
105A	3'-0" W X 7'-0" H	D3	SC	-	-	F1	HM	HW-2	
106A	3'-0" W X 7'-0" H	D1	SC	-	YES	F1	HM	HW-4	
107A	3'-0" W X 7'-0" H	D1	SC	-	YES	F1	HM	HW-4	
110A	3'-0" W X 7'-0" H	D1	HM	-	YES	F1	HM	HW-2	NOTE 7

DOOR ELEVATIONS	DOOR FRAMES	DOOR HARDWARE	DOOR NOTES
<p>*NOTE: ALL GLASS USED IN DOORS TO BE TEMPERED.</p> <p>D1: SOLID CORE WOOD (OR) PAINTED HOLLOW METAL</p> <p>D2: SOLID CORE WOOD</p> <p>D3: SOLID CORE WOOD</p>	<p>F1</p>	<p>*SEE SCHEDULE FOR CLOSER INFORMATION</p> <p>HW-1 HW-5</p> <p>1 LOCKSET- ENTRY 1 LOCKSET- CLASSROOM</p> <p>3 BUTT HINGES 3 BUTT HINGES</p> <p>3 SILENCERS 3 SILENCERS</p> <p>HW-2</p> <p>1 LOCKSET- PRIVACY</p> <p>3 BUTT HINGES</p> <p>3 SILENCERS</p> <p>HW-3</p> <p>1 LOCKSET- STOREROOM</p> <p>3 BUTT HINGES</p> <p>3 SILENCERS</p> <p>HW-4</p> <p>1 PUSH PAD</p> <p>1 PULL BAR</p> <p>3 BUTT HINGES</p> <p>3 SILENCERS</p>	<p>1) ALL HARDWARE FINISHES TO BE SELECTED BY THE ARCHITECT</p> <p>2) COORDINATE KEYING & CYLINDERS (HAGAR, GRADE 2, 3400 SERIES; WITHNELL SERIES OR EQUAL) PER THE OWNER'S INSTRUCTIONS. PROVIDE ALL NECESSARY HARDWARE FOR A COMPLETE INSTALLATION. HARDWARE SHALL BE LEVER HANDLES AND SHALL COMPLY WITH ICC A117.1, SPECIFICALLY 404.2.6 & 404.2.7.</p> <p>3) ALL INTERIOR HOLLOW METAL FRAMES TO BE 16 GAUGE MIN. KNOCK DOWN FRAMES.</p> <p>4) ALL THRESHOLDS TO BE H.C. ACCESSIBLE & ADA COMPLIANT.</p> <p>5) SIGNAGE TO MEET CHAPTER 18 VOLUME 1C.</p> <p>6) SOLID CORE ROTARY SLICED WHITE BIRCH DOORS, STAIN TO BE SELECTED BY THE ARCHITECT.</p> <p>7) PROVIDE THRESHOLD & WEATHERSTRIPPING AT ALL EXTERIOR DOORS OR BETWEEN ANY CONDITIONED AND UNCONDITIONED AREAS. INSTALL WEATHER-STRIPPING AT HEAD, JAMB & SILL.</p>



FINISHES
CPT-1 - 24" x 24" CARPET TILE- FIELD - SHAW INTENT (COLOR: TBD) (ASHLAR INSTALLATION)
LVT-1 - 6" x 48"- SHAW TERRAIN II 20 MIL (COLOR: TBD)
VCT-1 - 12" x 12"- ARMSTRONG EXCELON SDT (COLOR: TBD)
SC - SEALED CONCRETE
B1- TARKETT RUBBER 4"- TBD
B2- TARKETT RUBBER 6"- TBD (WET AREAS ONLY)
B3- TARKETT RUBBER 4"- BLACK (ALONG WAREHOUSE WALL)
PT1- SHERWIN WILLIAMS FLAT FIELD- ? (1 COAT PRIMER & 1 COAT OF FLAT)
PT2- SHERWIN WILLIAMS FLAT ACCENT- ?
PT3- SHERWIN WILLIAMS SEM-GLOSS (HM FRAMES)- ?
PT4- SHERWIN WILLIAMS EPOXY (WET AREAS ONLY)- ?
PT5- SHERWIN WILLIAMS FLAT EPOXY AT RESTROOMS (GYPSUM CEILING); EXTRA BRIGHT WHITE SW7007
SC WOOD DOOR- STAIN, SEAL & POLY DOORS (IN FIELD)- COLOR: T.B.D.
PLAM 1- VERTICAL FACING- WILSONART- ? MATTE FINISH (GRAIN RUNS VERTICAL ONLY)
PLAM 2- COUNTERTOP- WILSONART- ? MATTE FINISH (BREAK ROOM)
ACT-1- 24" x 48" ACOUSTIC CEILING TILE- ROCKFON PACIFIC SQUARE TEGULAR #260 W/ 15/16" CHICAGO METALLIC #1200 GRID
NOTES
1. PROVIDE R-13 UN-FACED BATT INSULATION IN NEW WALLS & ABOVE CEILING AT OFFICE
ALL FINISHES COMPLY WITH TABLE 803.11 2023 FLORIDA BUILDING CODE. INTERIOR EXIT STAIRWAYS & RAMPS AND EXIT PASSAGEWAYS COMPLY WITH CLASS C. CORRIDORS & ENCLOSURE FOR EXIT ACCESS STAIRWAYS & RAMPS COMPLY WITH CLASS C. ROOMS & ENCLOSED SPACES COMPLY WITH CLASS C FOR SPRINKLERED BUILDINGS.



RCP NOTES:

- 2' x 4' DIRECT/ INDIRECT LED LIGHT FIXTURE
- SUSPENDED ACOUSTICAL TILE CEILING
- INDICATES CEILING/ SOFFIT HEIGHT

- ALL ACOUSTICAL CEILING TILE TO BE AT 10'-0" AFF IN OFFICE U.N.O.; WAREHOUSE OPEN TO STRUCTURE

- COORDINATE FINAL PLACEMENT OF LIGHTING, EQUIPMENT AND FIXTURES WITH ARCHITECT PRIOR TO INSTALLATION

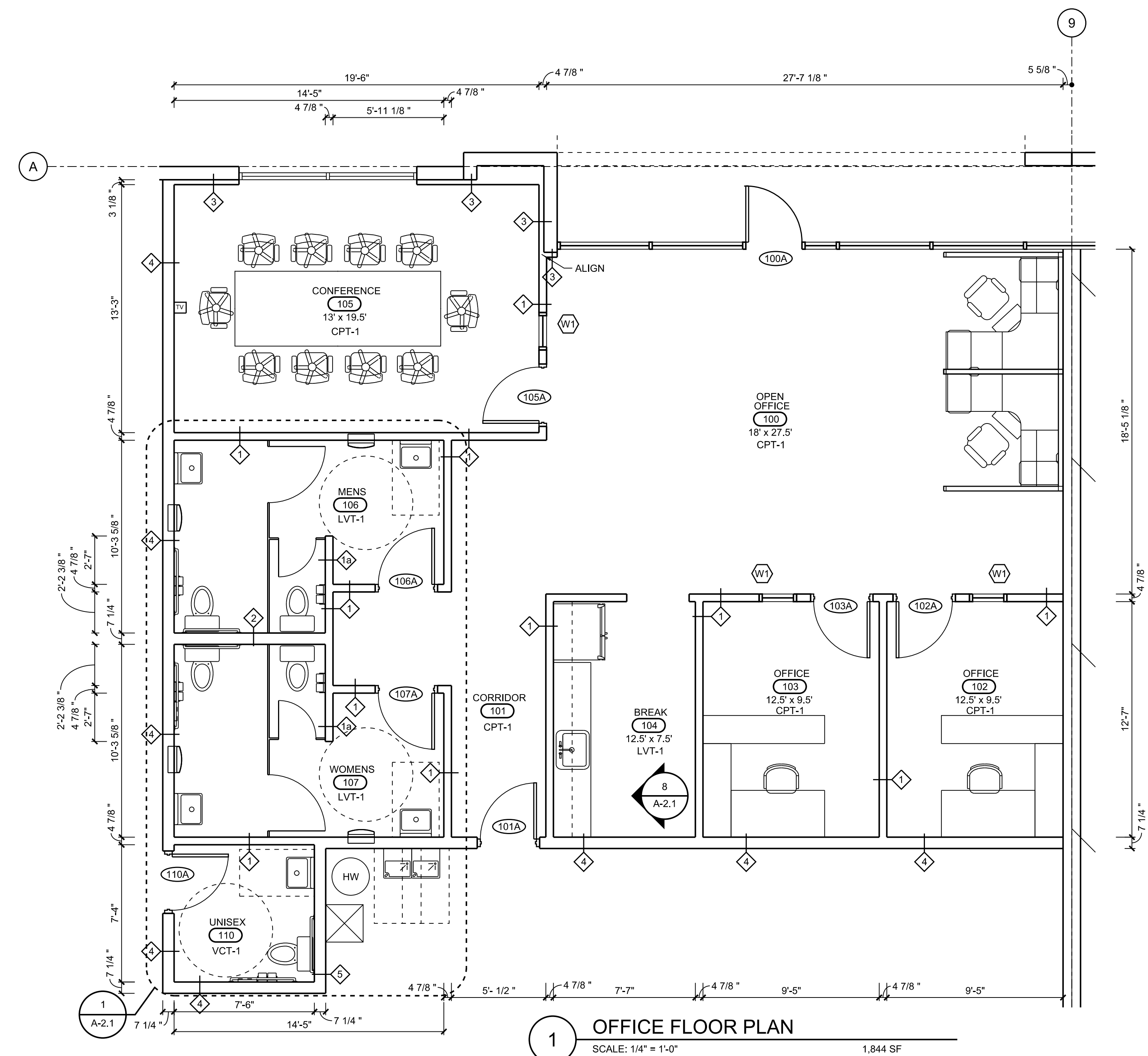
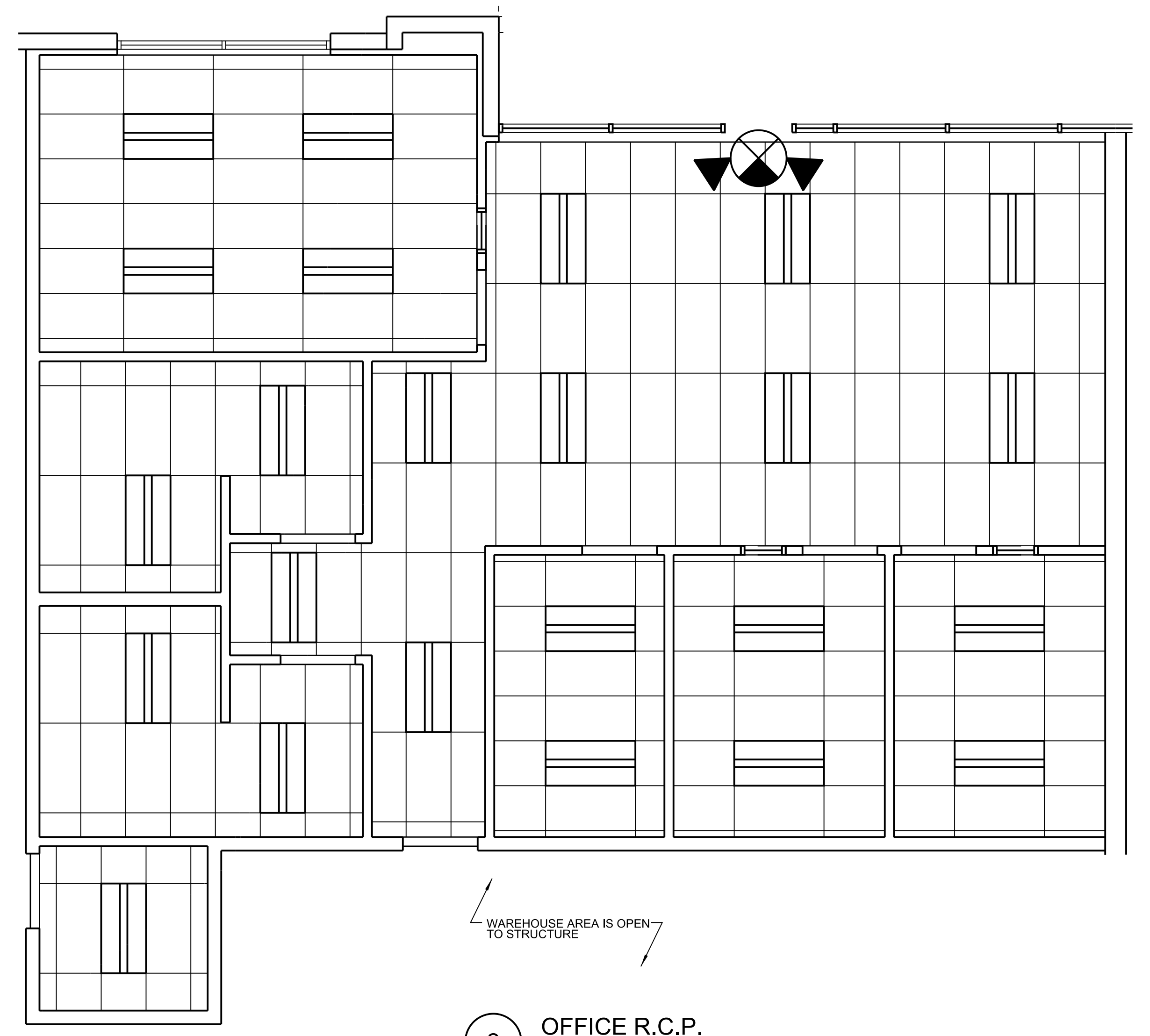
- SEE FINISH SCHEDULE FOR LAY-IN CEILING TILE AND GRID TYPES

- SEE ELECTRICAL PLANS FOR LIGHT FIXTURE SPECIFICATIONS

- ALL HEIGHTS ARE TAKEN FROM FIN. FLOOR (1'-0") AS REFERENCED IN WALL SECTIONS

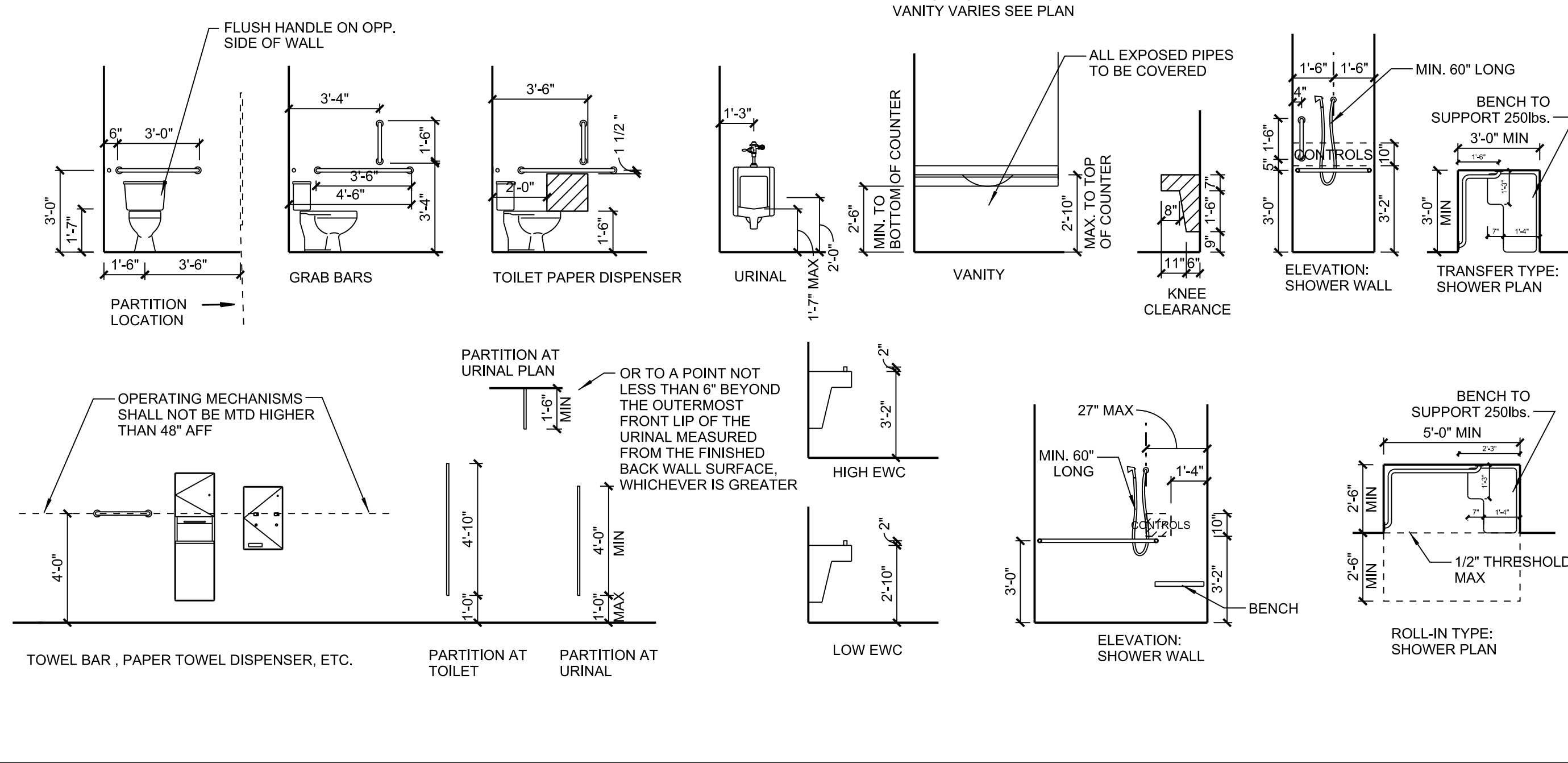
- SEE ELECTRICAL DRAWINGS AND LIFE SAFETY PLAN FOR EMERGENCY LIGHTS & EXIT DEVICE LOCATIONS

- SOUND BATT INSULATION ABOVE CEILING THROUGHOUT OFFICE AREA; MIN R-13 INSUL.



MOUNTING HEIGHTS

NOTE: MOUNTING HEIGHTS BELOW ARE TO BE FOLLOWED UNLESS OTHERWISE NOTED ON THE DRAWINGS



RESTROOM NOTES:

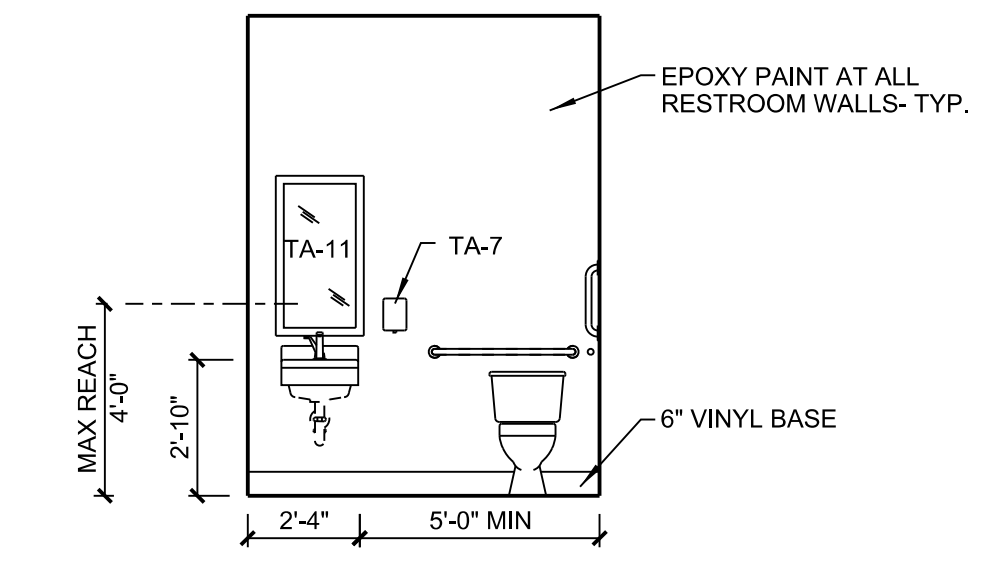
- USE MOISTURE RESISTANT GYPSUM WALLBOARD ON ALL BATHROOM WALLS & CEILING
- INDICATES SLOPE TILE WITH THINSET TO FLOOR DRAIN
- FIELD VERIFY MEASUREMENTS
- MIRRORS TO BE INSTALLED 40" MAX. AFF

TOILET ACCESSORY SCHEDULE

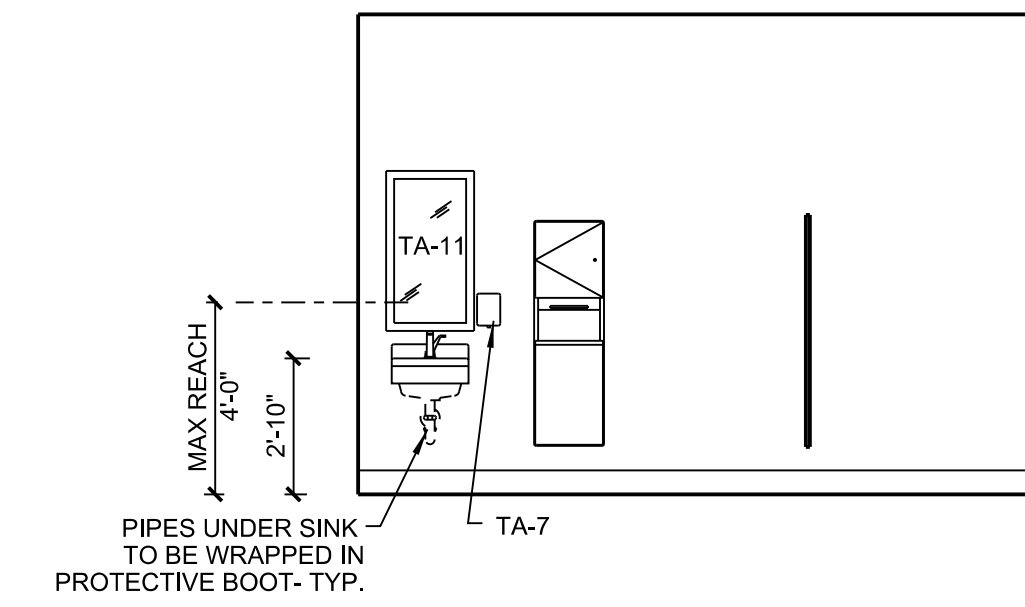
NOTE: THE FOLLOWING FIXTURES ARE BOBRICK FIXTURES AS SPECIFIED.

- TA-1 PAPER TOWEL DISPENSER/WASTE RECEPTACLE B-3944
- TA-2 TOILET PAPER DISPENSER B-2888
- TA-3 SANITARY NAPKIN DISPOSAL B-35139
- TA-4 36" H.C. GRAB BAR (B-6806)
- TA-5 42" H.C. GRAB BAR (B-6806)
- TA-6 18" H.C. GRAB BAR (B-6806)
- TA-7 SURFACE MOUNTED SOAP DISPENSER B-4112
- TA-8 COUNTER MOUNTED SOAP DISPENSER B-622
- TA-9 SIGNAGE TO MEET APPLICABLE SECTIONS OF ANSI A117.1
- TA-10 DID NOT USE
- TA-11 24" x 36" MIRROR B-165 2436

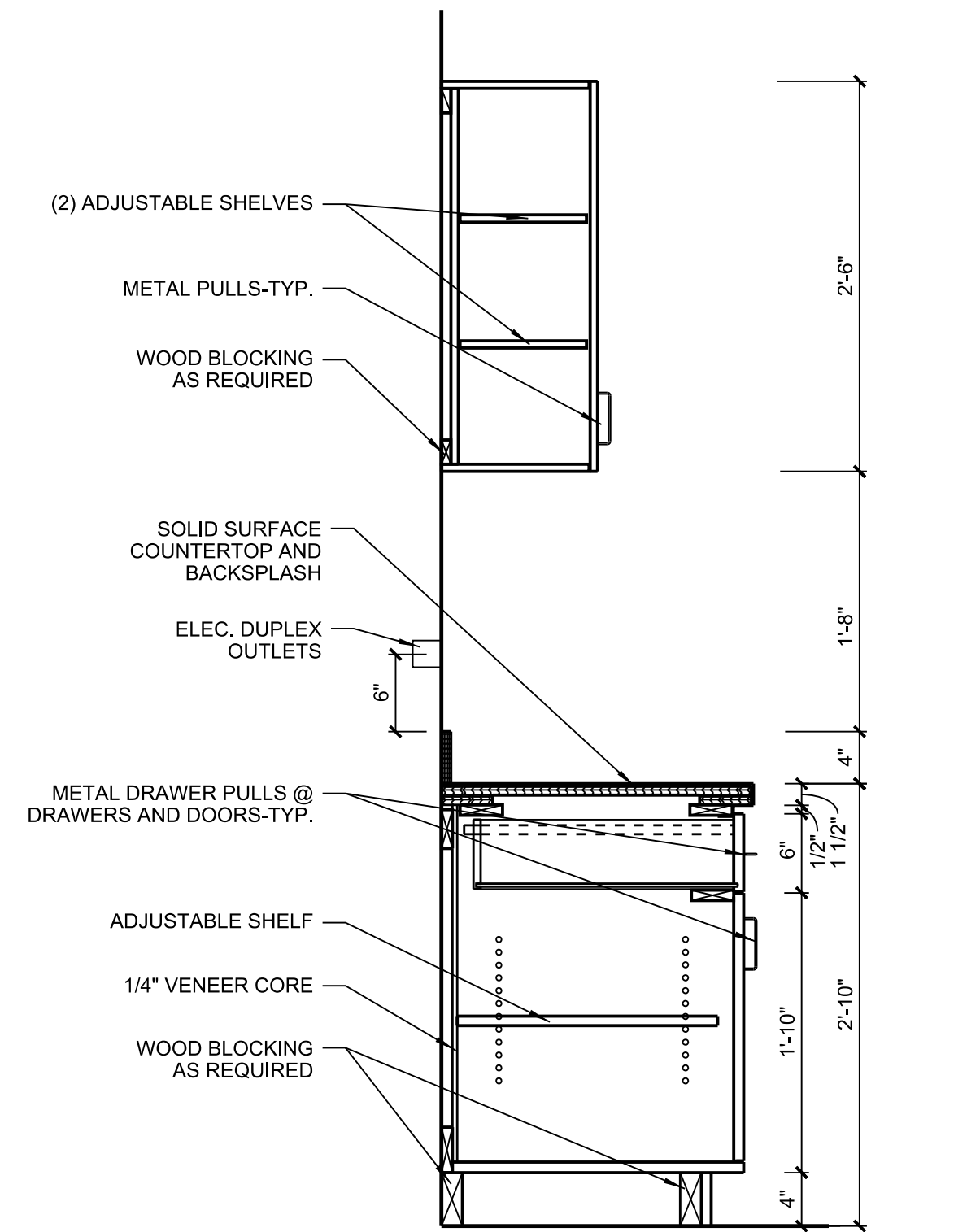
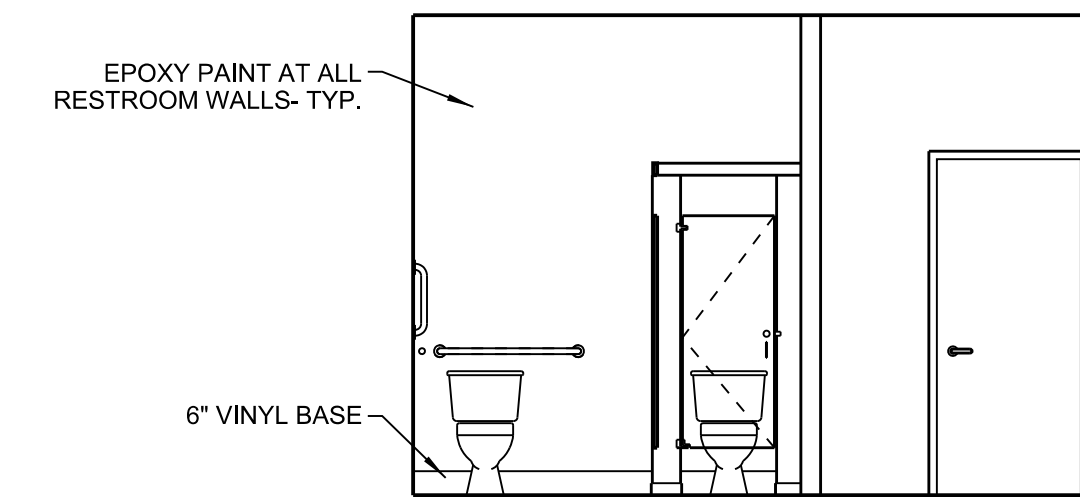
4 ELEVATION- UNISEX RESTROOM 110
SCALE: 1/4" = 1'-0"



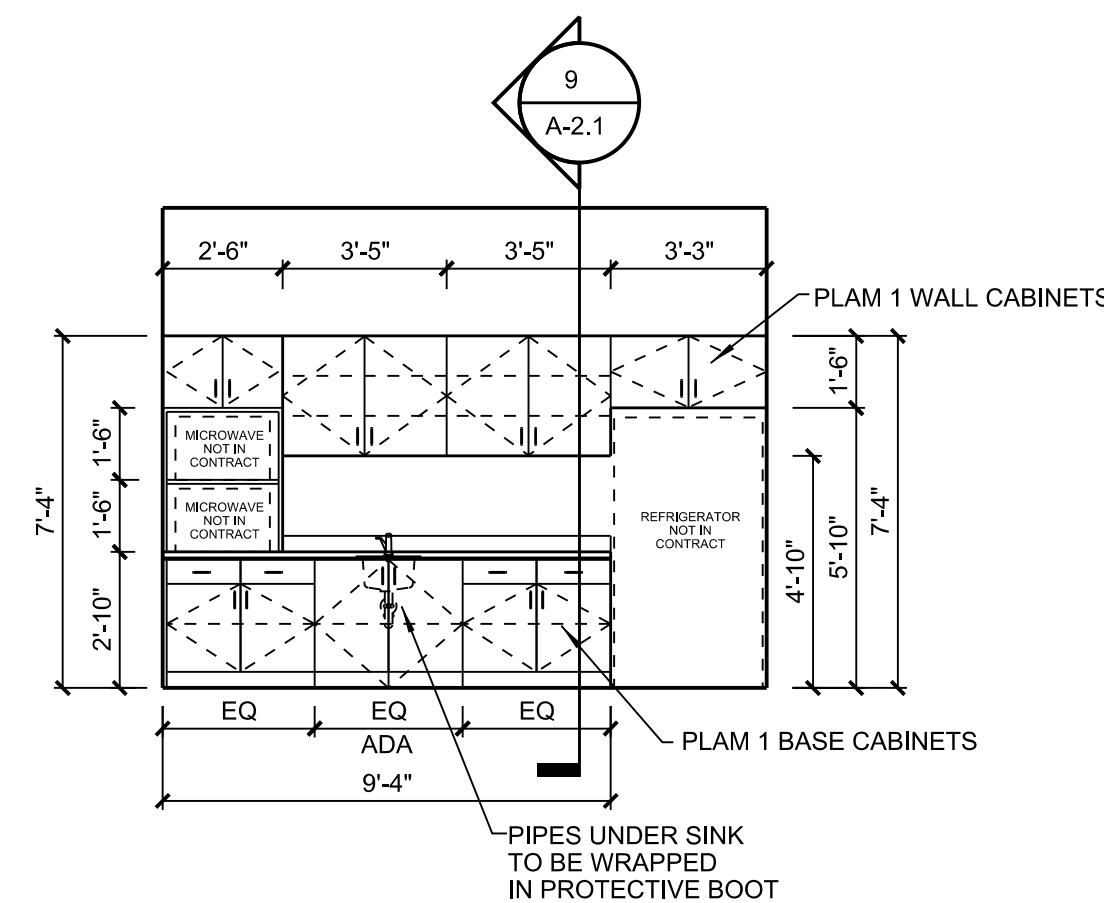
3 ELEVATION- WOMENS RESTROOM 107
SCALE: 1/4" = 1'-0"



2 ELEVATION- WOMENS RESTROOM 107
SCALE: 1/4" = 1'-0"

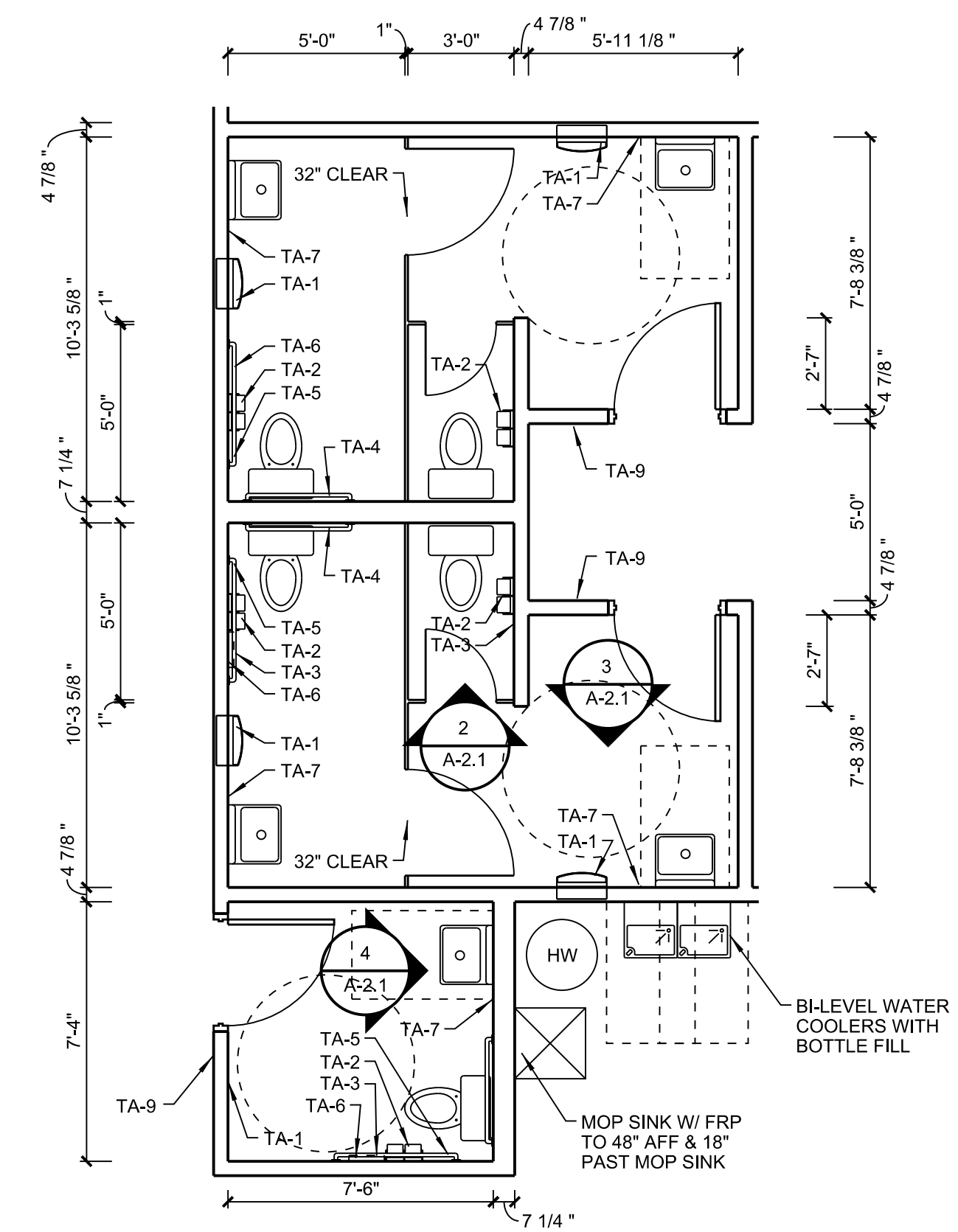


9 SECTION- TYPICAL MILLWORK
SCALE: 1" = 1'-0"



8 ELEVATION- BREAK ROOM
SCALE: 1/4" = 1'-0"

1 ENLARGED OFFICE RESTROOMS
SCALE: 1/4" = 1'-0"



2907 Providence Rd
Suite 304
Charlotte, NC 28211

T. 704.342.9876
F. 704.334.4246

wgmdesign.com



SL Management Group
Southeast

PALM BEACH
INDUSTRIAL PARKS:

701A BOUTWELL ROAD
LAKE WORTH, FLORIDA

"SPEC OFFICE
UPFIT"

REV. DATE DESCRIPTION

DATE:

OCTOBER 10, 2023

PROJECT NO.:

22000.09

TITLE:

OFFICE

DETAILS

DRAWING NO.

A-2.1