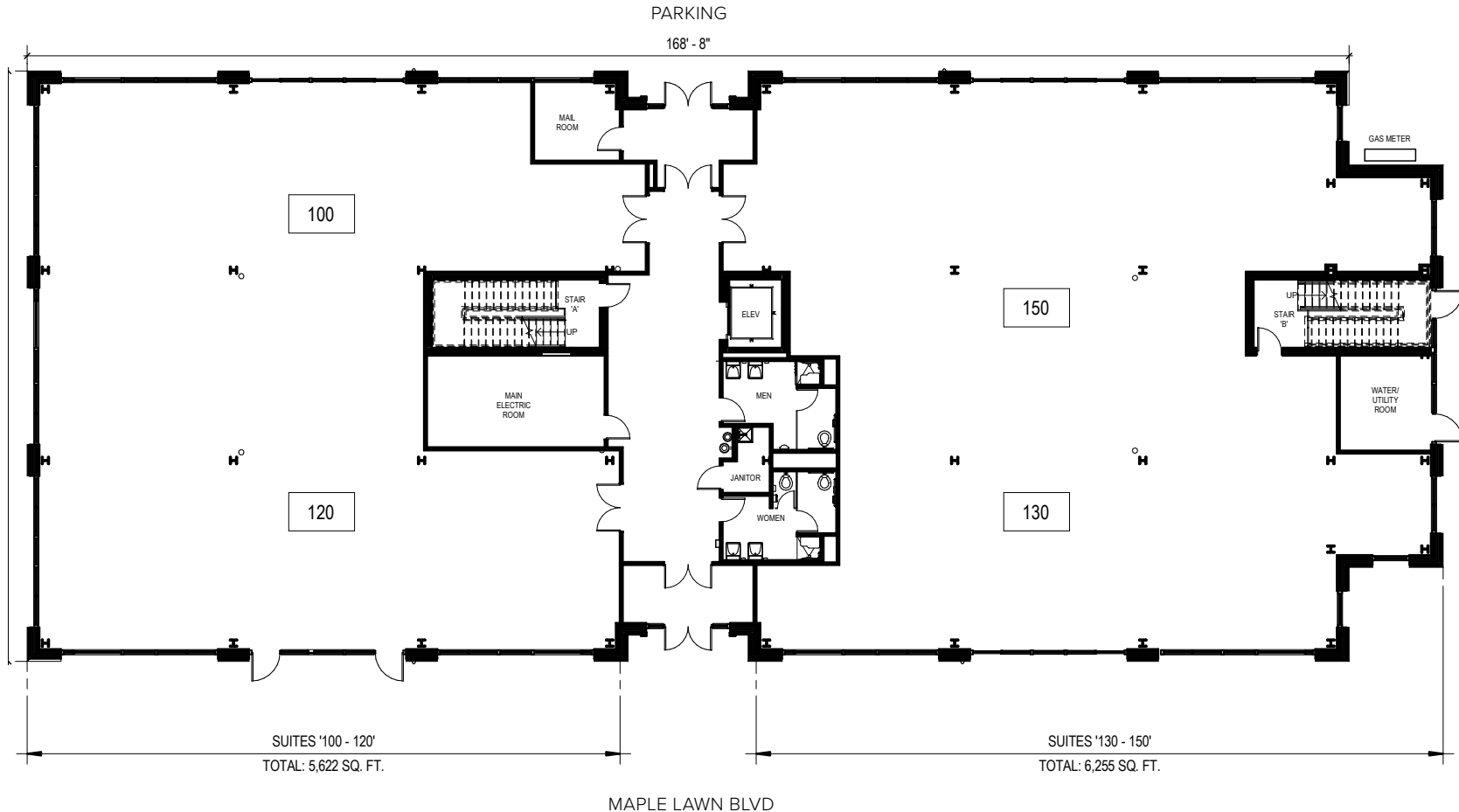


Total SF Available:
3,562 up to 36,934 SF

*Brand new 3 story, 1st generation,
Class A, Medical Office Building*

Note: This space plan is subject to existing field conditions. This drawing is proprietary and the exclusive property of St. John Properties, Inc. Any duplications, distribution, or other unauthorized use is strictly prohibited.



Maple Lawn

7585 Maple Lawn Boulevard | Fulton, MD 20759

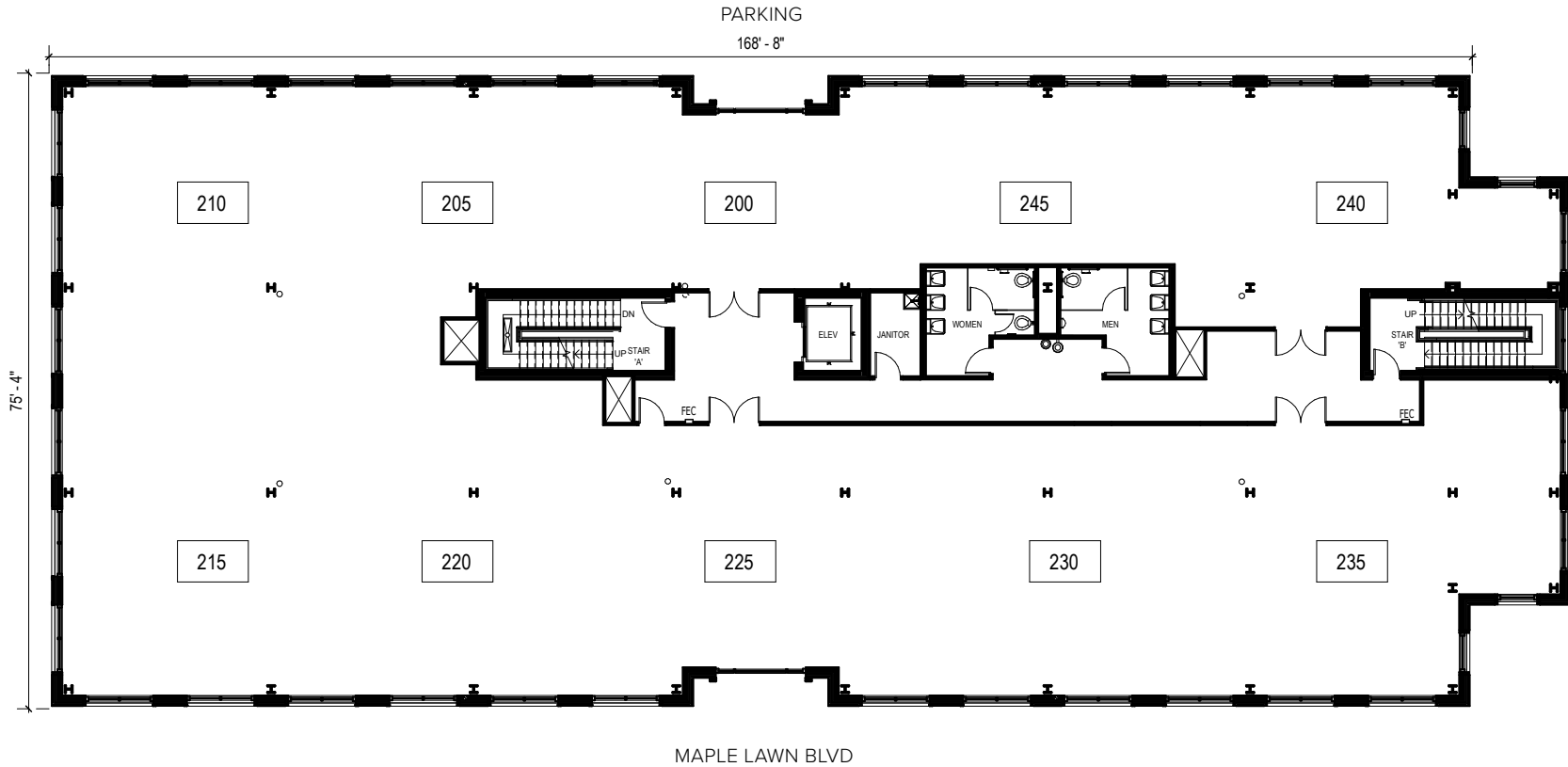
Medical Pavilion II | Second Floor | Suites 200-245

Total SF Available:

3,562 up to 36,934 SF

*Brand new 3 story, 1st generation,
Class A, Medical Office Building*

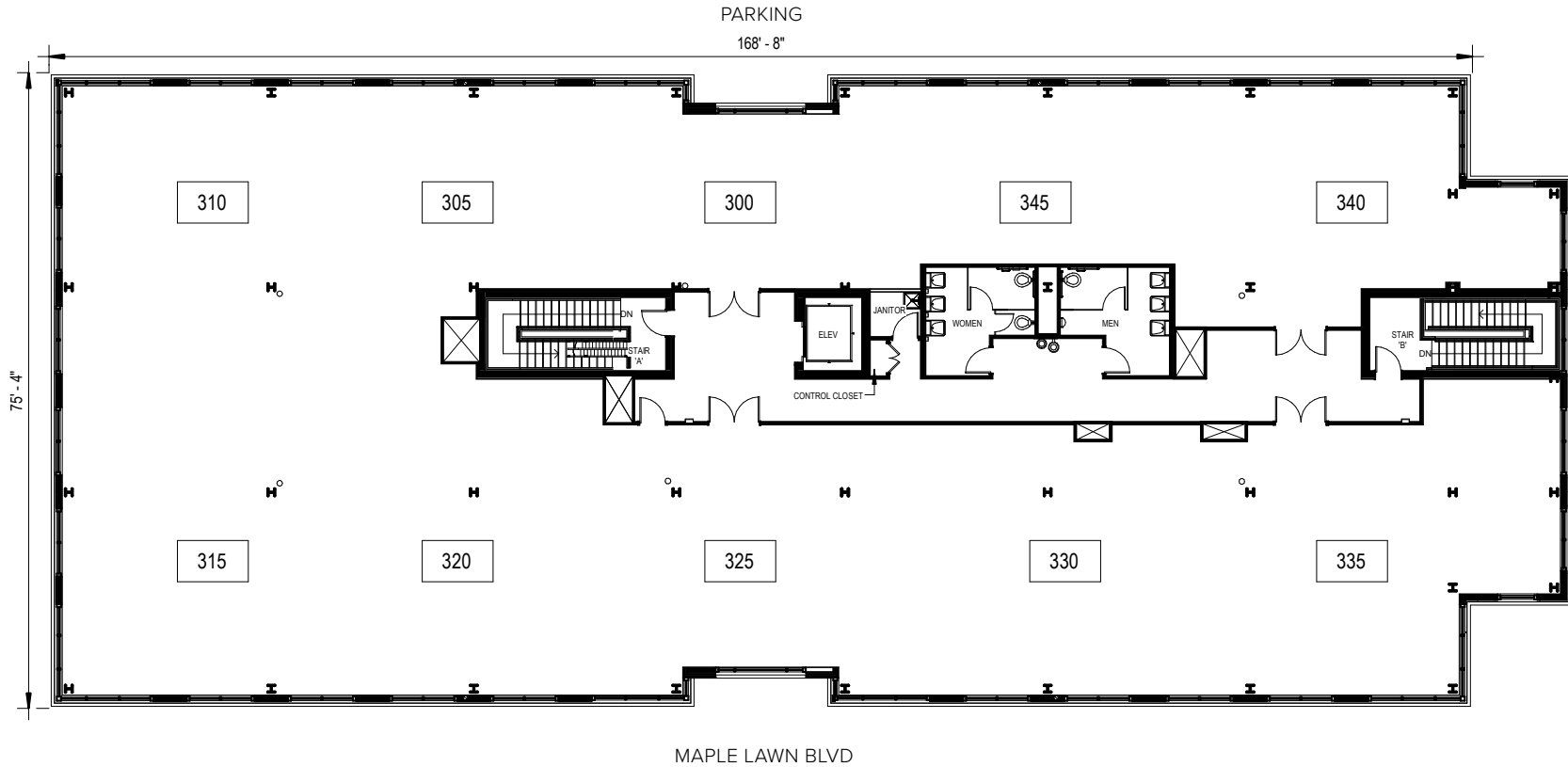
Note: This space plan is subject to existing field conditions. This drawing is proprietary and the exclusive property of St. John Properties, Inc. Any duplications, distribution, or other unauthorized use is strictly prohibited.



Total SF Available:
3,562 up to 36,934 SF

*Brand new 3 story, 1st generation,
Class A, Medical Office Building*

Note: This space plan is subject to existing field conditions. This drawing is proprietary and the exclusive property of St. John Properties, Inc. Any duplications, distribution, or other unauthorized use is strictly prohibited.





7575 & 7585 Maple Lawn Boulevard

Class 'A' Medical Office | 67,004 SF Across Two Buildings

Two new medical buildings are currently under development with delivery expected Q3 2026. Strategically positioned in the Midtown District of Maple Lawn, these facilities are designed to support a wide range of specialties with flexible layouts, modern infrastructure, and easy access for patients and staff alike.

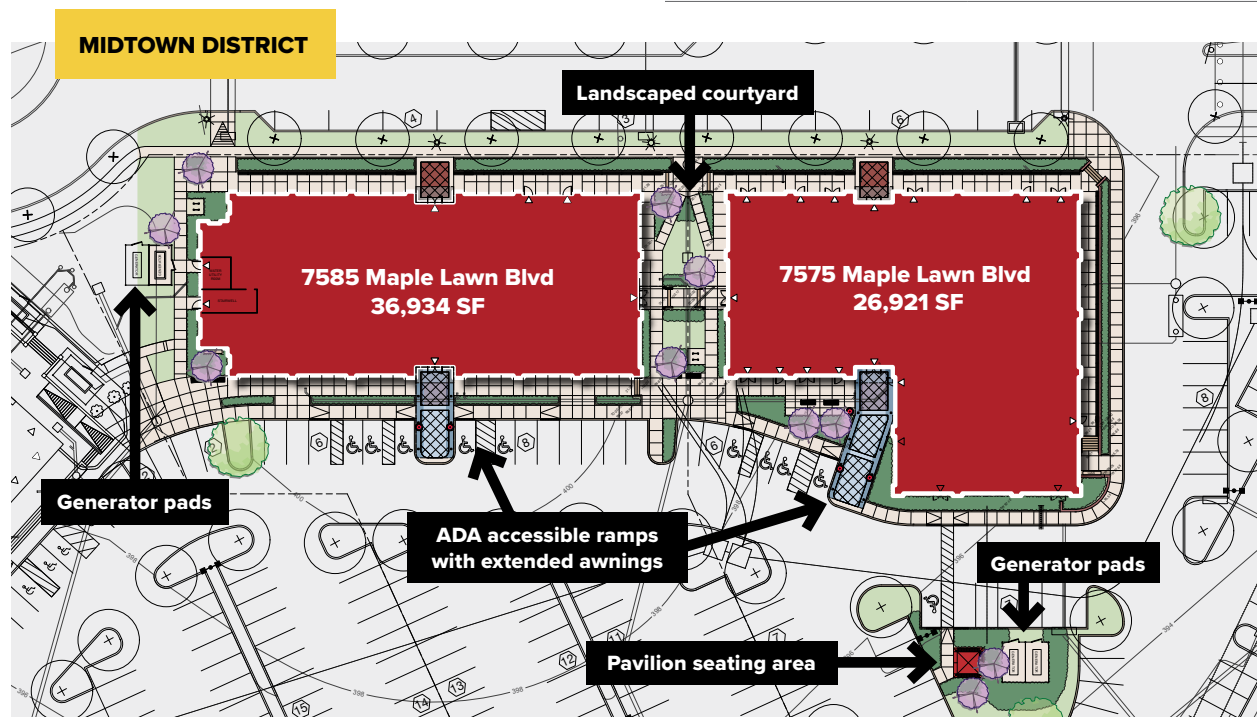
Surrounded by a variety of retail, dining, and residential options, these buildings offer medical providers the opportunity to establish their practice in a growing, high-traffic area that promotes convenience and long-term growth.

Medical Office Buildings

| | | |
|----------------------|-----------|---------------|
| 7575 Maple Lawn Blvd | 26,921 SF | LEED DESIGNED |
| 7585 Maple Lawn Blvd | 36,934 SF | LEED DESIGNED |

Medical Office Specifications

| | |
|---------------|-----------------------|
| LEED | Designed |
| Suite Sizes | 2,500 up to 36,934 SF |
| Parking | 4 spaces per 1,000 SF |
| Elevator | Yes |
| Accessibility | Automatic doors |
| HVAC | Gas, VAV |
| Lease Type | Full Service |





Scan code to learn more about Maple Lawn!

Contact Us

Bill Jautze

Assistant Vice President, Leasing
BJautze@sjpi.com | 410.369.1213

Matt Lenihan

Executive Vice President, Leasing
MLenihan@sjpi.com | 410.369.1202

Corporate Headquarters:

2560 Lord Baltimore Drive | Baltimore, MD 21244
410.788.0100 | SJPI.COM

About St. John Properties

St. John Properties, Inc. is one of the nation's largest and most successful privately held commercial real estate firms. Founded in 1971, the vertically-integrated company develops, owns and manages office, flex/research and development, warehouse, retail and multifamily space nationwide.

Connect with us @stjohnprop

