

FOR LEASE:

270 Sq. Ft. Office Suite

201 E. Park Street • Suite E • Mundelein • IL 60060



Contact:

[Ken Eichelberger](#)

847-533-7144 (Mobile)

jcf.ike@sbcglobal.net

PROPERTY HIGHLIGHTS:

BUILDING SIZE: 270 Sq. Ft.

COMPLEX TYPE: Office Complex

CONSTRUCTION: Block / Dryvit

LOT SIZE: Common

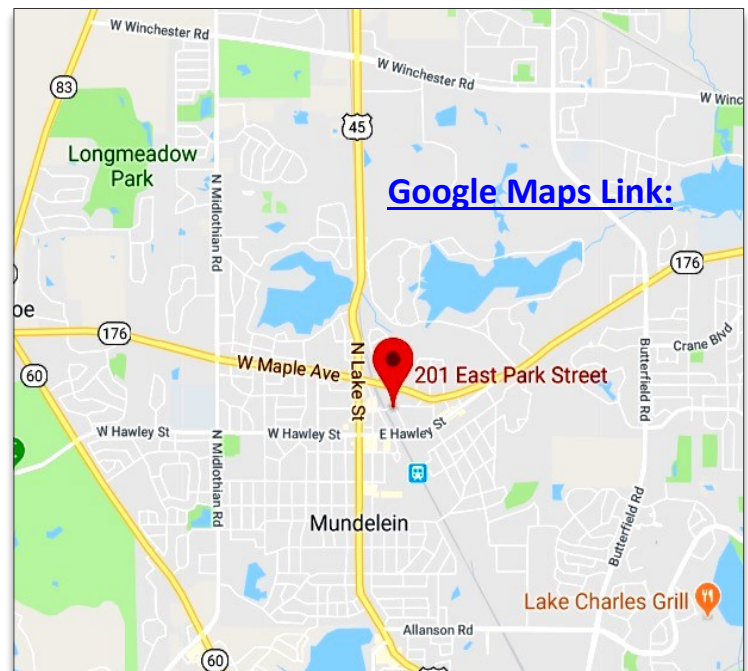
CEILING HEIGHT: 9' Clear

POWER: 200 Amps/240 Volts

HVAC: Central System

PARKING: Excellent
Common Parking Lots

BASE RENT: \$250.00/Month Gross



[Google Maps Link:](#)

DIRECTIONS: Route 45 to East Park Street, east to just past tracks, corner of Park Street and Morris Avenue.

COMMENTS: Very nice hard-to-find small office suite, open office, private entrance.

JC **FORNEY** INC
REALTY

Commercial / Industrial / Investment
Serving Lake County Since 1935

131 West Park Avenue • Libertyville • IL • 60048

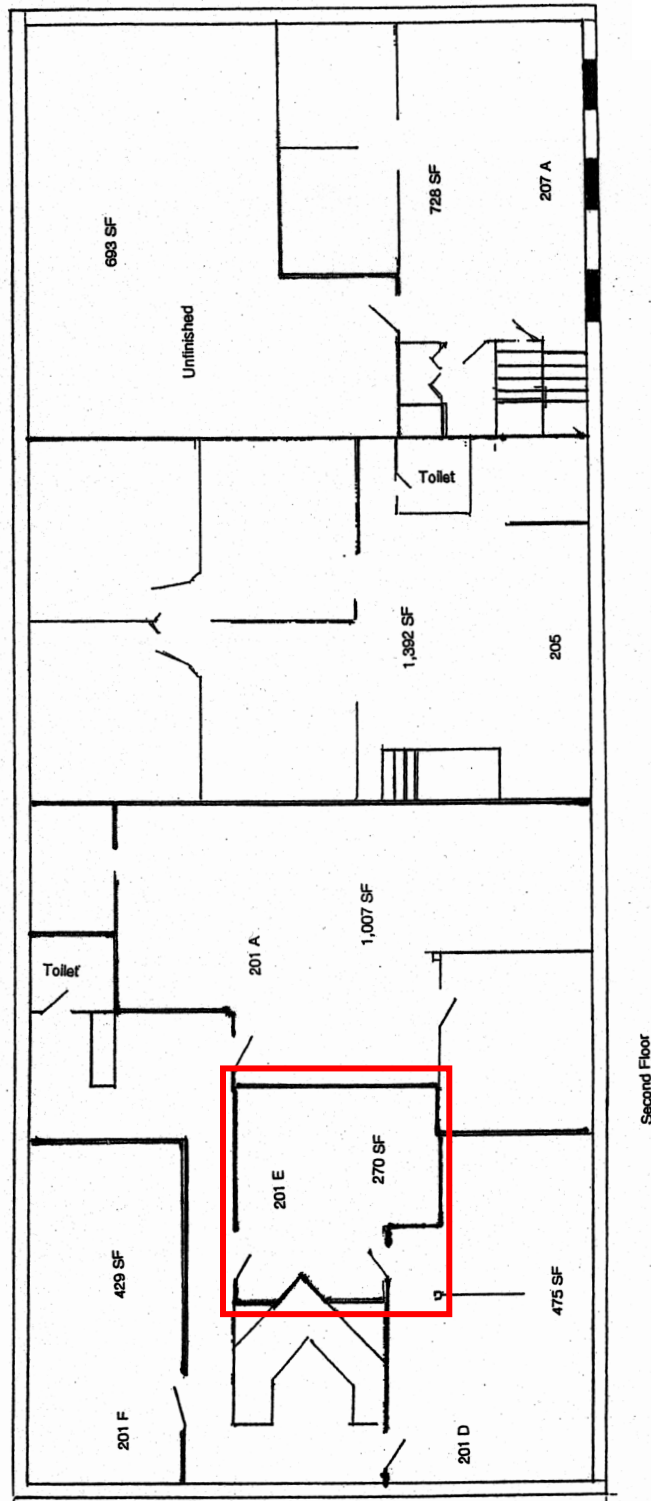
www.jcforneyrealty.com

Office: (847) 362-2000

FOR LEASE:

270 Sq. Ft. Office Suite

201 E. Park Street • Suite E • Mundelein • IL 60060



JC **FORNEY** INC
REALTY

Commercial / Industrial / Investment
Serving Lake County Since 1935

131 West Park Avenue • Libertyville • IL • 60048

www.jcforneyrealty.com

Office: (847) 362-2000

All information contained herein is from sources deemed reliable and is submitted subject to errors, omissions, and change without notice.