



## JUDSON CRE

555 Madison Avenue, 5th Floor  
New York, NY 10022  
(212) 202 9200

19 East 66th  
STREET  
New York, NY

As exclusive agents, we are pleased to offer the following space for sublease:

### PROPERTY INFORMATION

Between Madison and Fifth Avenues

#### Space:

Fourth Floor            Approx. 1,500 sf

Fifth Floor              Approx. 1,500 sf

#### Ceiling Height:

Fourth Floor            Approx. 10 feet

Fifth Floor (N)        Approx. 11 feet

Fifth Floor (S)        Approx. 9 feet

**Term:**                    December 31, 2023

**Possession:**          Immediate

**Rent:**                    Upon Request

### PROPERTY DESCRIPTION

Located in the heart of the Gold Coast. The fourth and fifth floor immaculately renovated gallery/showroom offers a terrace that may be used for outside sculptures. Floors can be leased separately. Additional space is also available. Steps away from Park Avenue Armory, Museum Mile, and Central Park. Neighbors include David Zwirner gallery, Opera Gallery New York, Di Donna gallery, Hauser & Wirth gallery, Chanel, Daniel, Hôtel Plaza Athénée, Lowel Hotel, and Bar Italia.



For inspection and further information, please contact:

**Nicholas T. Judson**

(212) 202-9200

[njudson@judsoncre.com](mailto:njudson@judsoncre.com)

ONE-HALF OF ONE FULL COMMISSION, in accordance with the rates currently in use and on file with Judson CRE, LLC when received from our principals, will be paid to the cooperating broker who consummates a lease which has been fully executed and delivered. All information furnished with respect to the subject matter hereof has been obtained from sources deemed reliable. No representation or warranty as to the accuracy thereof is made and such information is submitted subject to errors, omissions, prior sale, change of price, rental or other conditions, or withdrawal without notice.

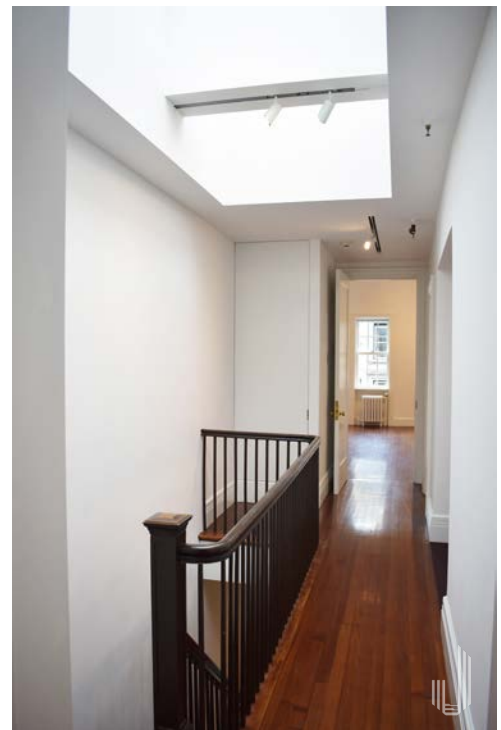
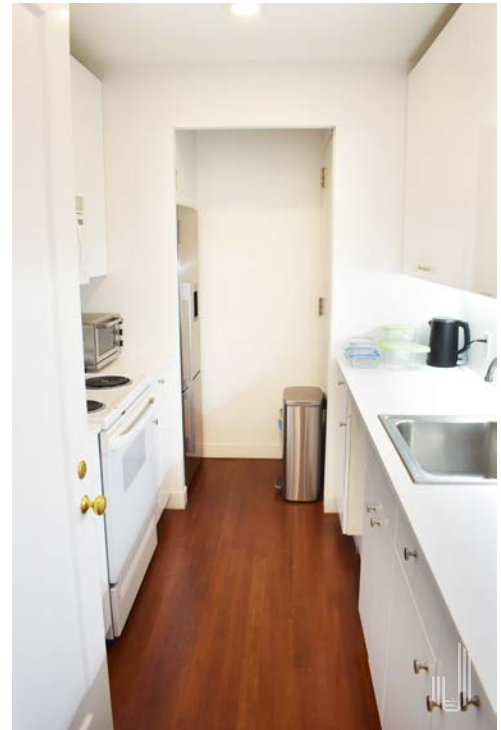


# JUDSON CRE

555 Madison Avenue, 5th Floor  
New York, NY 10022  
(212) 202 9200

# 19 East 66th STREET

New York, NY



ONE-HALF OF ONE FULL COMMISSION, in accordance with the rates currently in use and on file with Judson CRE, LLC when received from our principals, will be paid to the cooperating broker who consummates a lease which has been fully executed and delivered. All information furnished with respect to the subject matter hereof has been obtained from sources deemed reliable. No representation or warranty as to the accuracy thereof is made and such information is submitted subject to errors, omissions, prior sale, change of price, rental or other conditions, or withdrawal without notice.



# JUDSON CRE

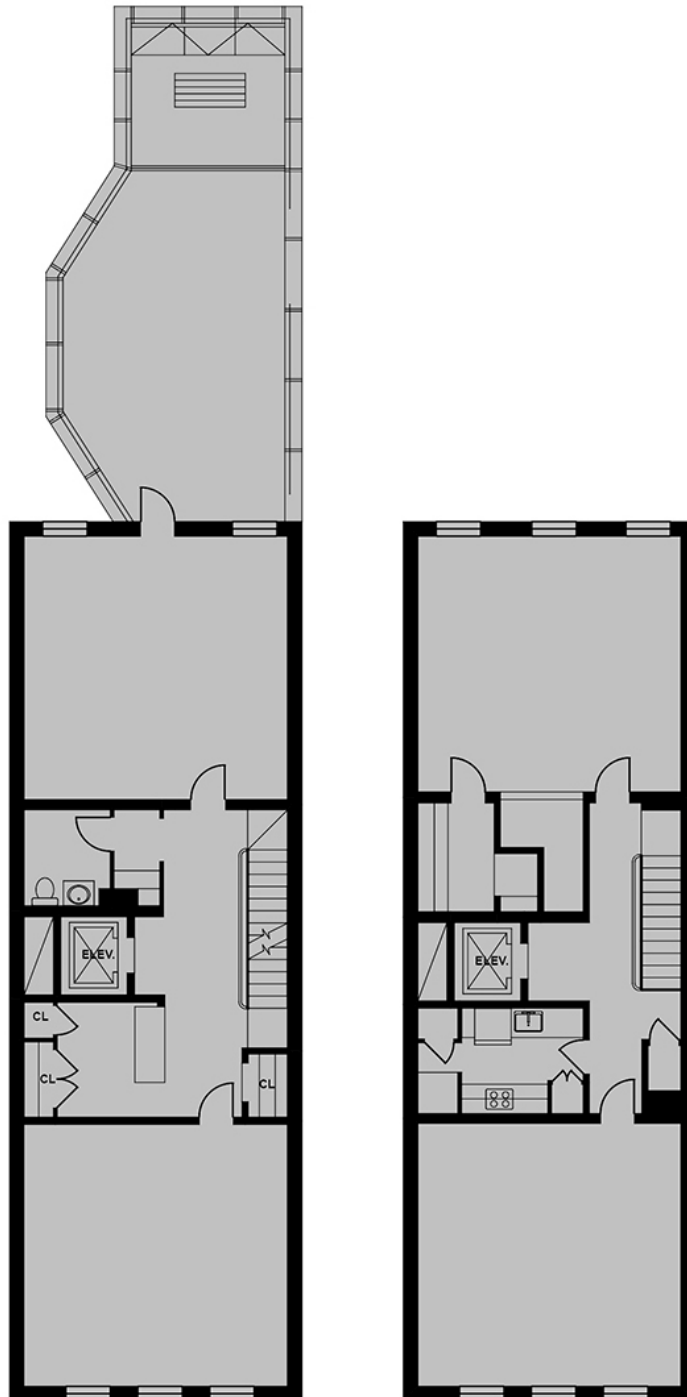
555 Madison Avenue, 5th Floor  
New York, NY 10022  
(212) 202 9200

19 East 66th  
STREET  
New York, NY

## Floor Plan

Fourth Floor

Fifth Floor



East 66th Street

ONE-HALF OF ONE FULL COMMISSION, in accordance with the rates currently in use and on file with Judson CRE, LLC when received from our principals, will be paid to the cooperating broker who consummates a lease which has been fully executed and delivered. All information furnished with respect to the subject matter hereof has been obtained from sources deemed reliable. No representation or warranty as to the accuracy thereof is made and such information is submitted subject to errors, omissions, prior sale, change of price, rental or other conditions, or withdrawal without notice.



# JUDSON CRE

555 Madison Avenue, 5th Floor  
New York, NY 10022  
(212) 202 9200

# 19 East 66th STREET

New York, NY

## Area Map

David Zwirner

HAUSER & WIRTH

DI DONNA



DANIEL



ONE-HALF OF ONE FULL COMMISSION, in accordance with the rates currently in use and on file with Judson CRE, LLC when received from our principals, will be paid to the cooperating broker who consummates a lease which has been fully executed and delivered. All information furnished with respect to the subject matter hereof has been obtained from sources deemed reliable. No representation or warranty as to the accuracy thereof is made and such information is submitted subject to errors, omissions, prior sale, change of price, rental or other conditions, or withdrawal without notice.