

THE ASTER



255 SOUTH STATE

BRAND NEW MIXED-USE DEVELOPMENT IN CBD

UNBEATABLE LOCATION IN EDISON NEIGHBORHOOD

UNIT SIZE RANGE 600/SF TO 4,800/SF

RENTAL RATES BETWEEN \$38-42PSF

TI AVAILABLE



CONTACT

GABE CHADSEY - SEAN NEVES 801-215-9797

GABE@UTERRA.NET SEAN@UTERRA.NET



TWO TOWERS FEATURING 190 RESIDENCES, OVER 100 PARKING STALLS, GROUND FLOOR RETAIL WITH HIGH CEILINGS AND GLASS CURTAIN WALLS



CONTACT
GABE CHADSEY - SEAN NEVES 801-215-9797
GABE@UTERRA.NET SEAN@UTERRA.NET



THE PASEO

A THROUGH-BLOCK PATHWAY BETWEEN STATE STREET AND EDISON, THE PASEO WILL BE THE CENTRAL PATHWAY, LINED BY THE BEST FOOD, BEVERAGE, CULTURAL AND ARTISTIC ASSETS IN THE CITY.

COMMUNITY

AT THE EAST END OF THE PASEO IS A ROTUNDA. A PLACE THAT WILL BE ACTIVATED BY CONCERTS, BENEFITS AND FESTIVALS. A CRITICAL GATHERING PLACE FOR THE COMMUNITY



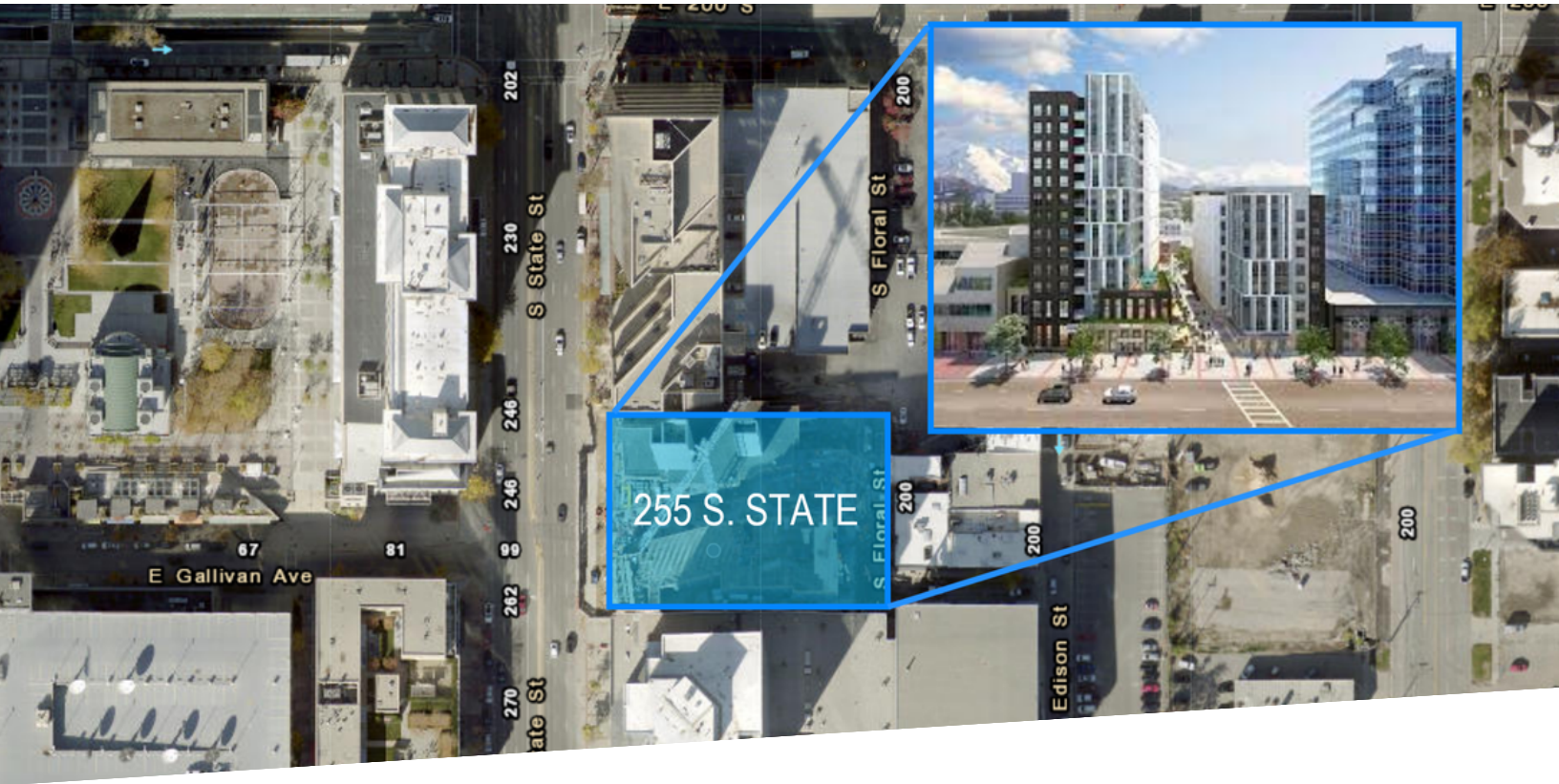
CONTACT

GABE CHADSEY - SEAN NEVES 801-215-9797

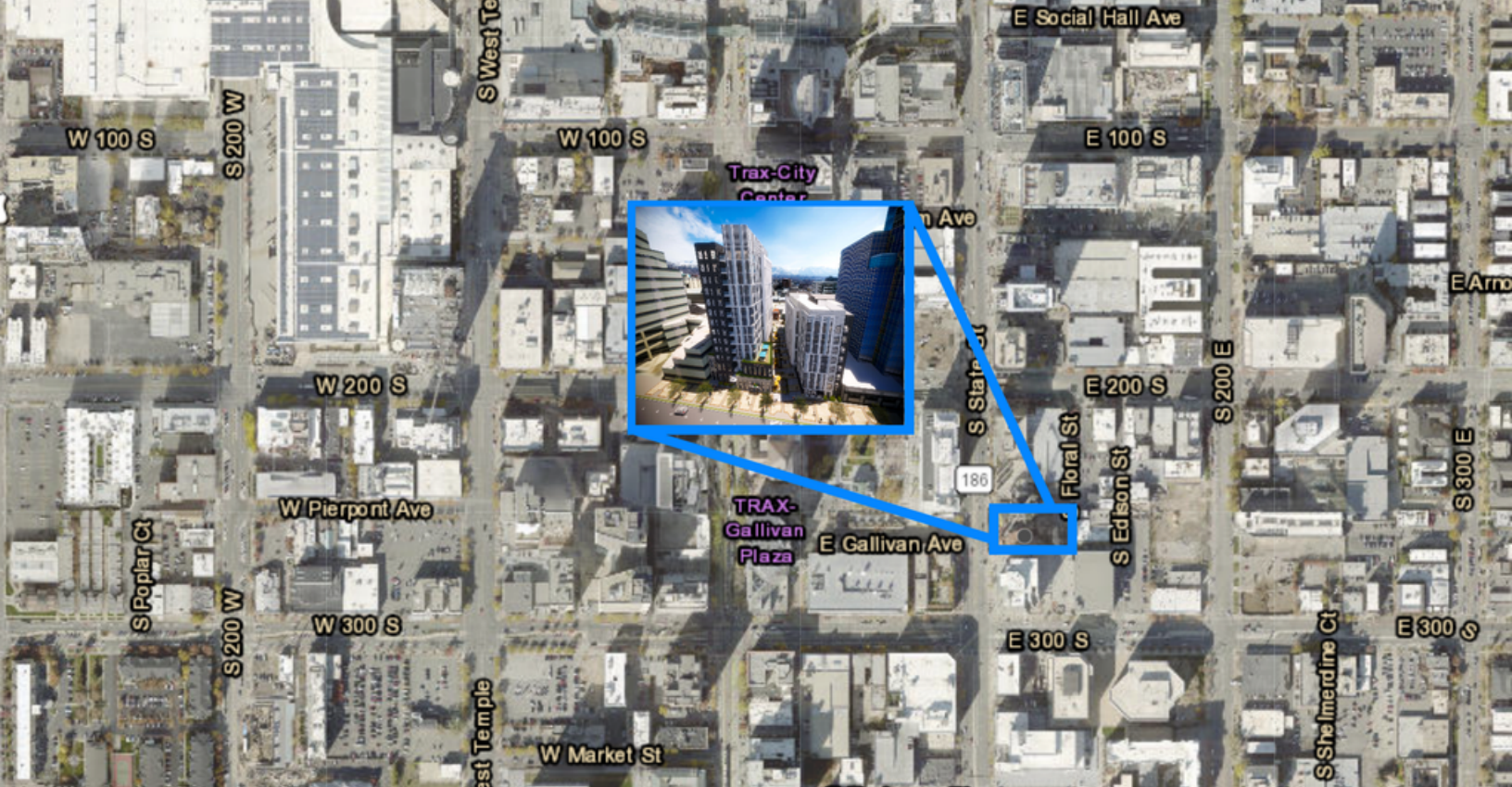
GABE@UTERRA.NET SEAN@UTERRA.NET

The neighborhood

255 S State sits at the crossroads of downtown Salt Lake's history and vibrant modern trajectory. Many, if not most, of the city's most beloved eateries, bars, galleries, shops, and show venues sit within a stone's throw. Walk to the trails of City Creek, hop on a Green Bike to dinner, catch a TRAX train to the airport, or ride a bus to the Cottonwood Canyons for your next powder day.



CONTACT
GABE CHADSEY - SEAN NEVES 801-215-9797
GABE@UTERRA.NET SEAN@UTERRA.NET

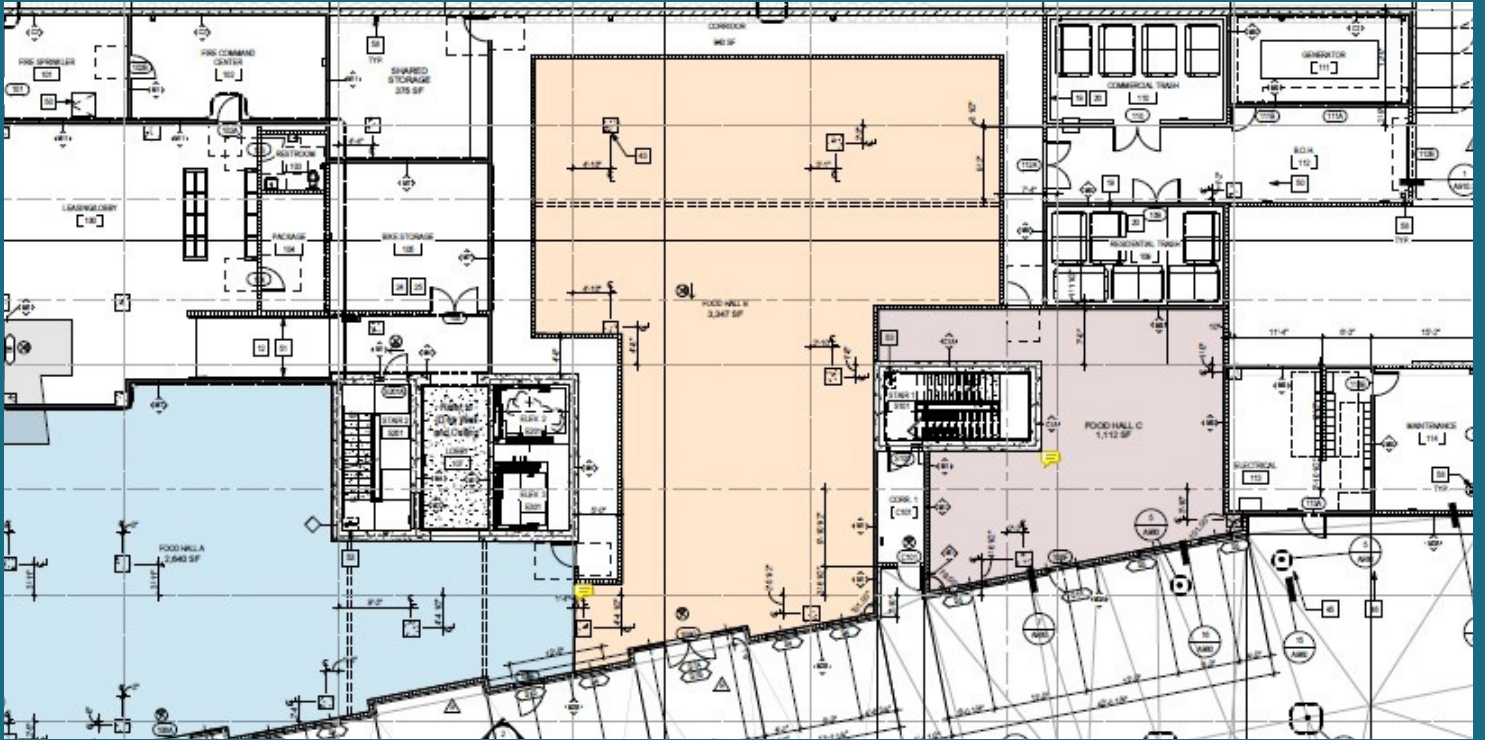


Open-air public paseo
190 residential units
Mixed income housing
Urban food collective
Indoor/outdoor event venues
Cultural arts & educational enrichment
Subterranean resident parking

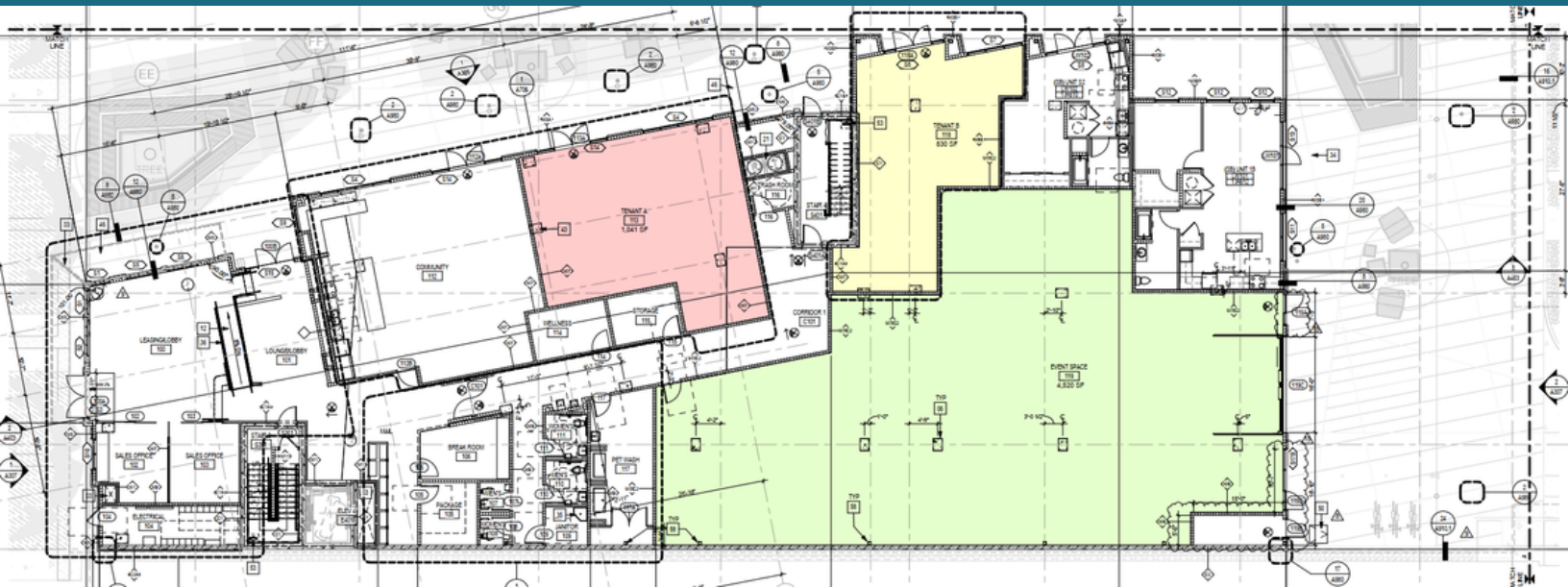


CONTACT
GABE CHADSEY - SEAN NEVES 801-215-9797
GABE@UTERRA.NET SEAN@UTERRA.NET

NORTH BUILDING RETAIL



SOUTH BUILDING RETAIL



CALL TODAY



CONTACT
GABE CHADSEY - SEAN NEVES 801-215-9797
GABE@UTERRA.NET SEAN@UTERRA.NET