

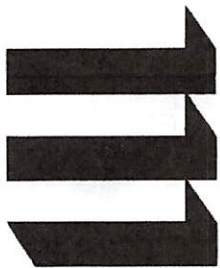
FOR LEASE

4605 Irvine Street
Pittsburgh, PA 15207



- Approx 6,800 Sq. Ft. Office/Warehouse+Garage**
- Ideal Location For Technology Business**
- Approx 1,500 sf Office**
- Has 8-10 Vehicle Parking Lot**
- Asking \$3,400 per month**

For More Information or a Tour of This Location, Please Call:



Equity
Real
Estate

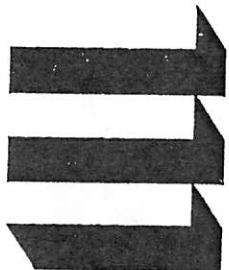
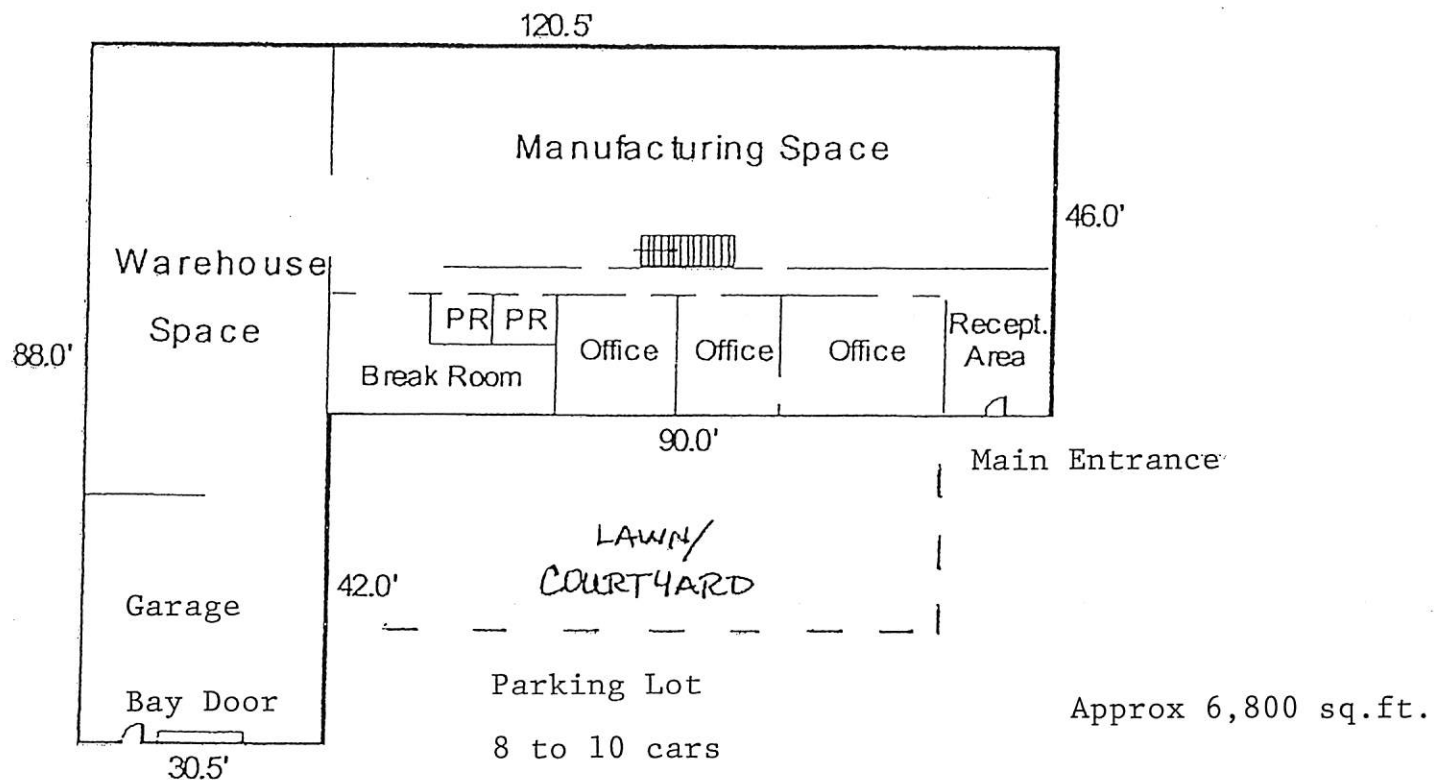
2029 Murray Avenue – Pittsburgh, PA 15217

David G Tkacik
412-422-1600 ext 245
dtkacik@comcast.net

All information furnished regarding property for sale, rental or financing is from sources deemed reliable. No representation is made as to the accuracy thereof and it is submitted subject to errors, omissions, change of price, rental or other conditions, prior sale, lease or financing, or withdrawal notice.

COMMERCIAL DIVISION – 412.422.1600 / 412.422.9236 fax
MANAGEMENT DIVISION - 412.422.9200

Floor Plan 4605 Irvine Street



**Equity
Real
Estate**

2029 Murray Avenue - Pittsburgh, PA 15217

Not to Scale and Not Made by an Architect

All information furnished regarding property for sale, rental or financing is from sources deemed reliable. No representation is made as to the accuracy thereof and it is submitted subject to errors, omissions, change of price, rental or other conditions, prior sale, lease or financing, or withdrawal notice.

COMMERCIAL DIVISION - 412.422.1600 / 412.422.9236 fax
MANAGEMENT DIVISION - 412.422.9200

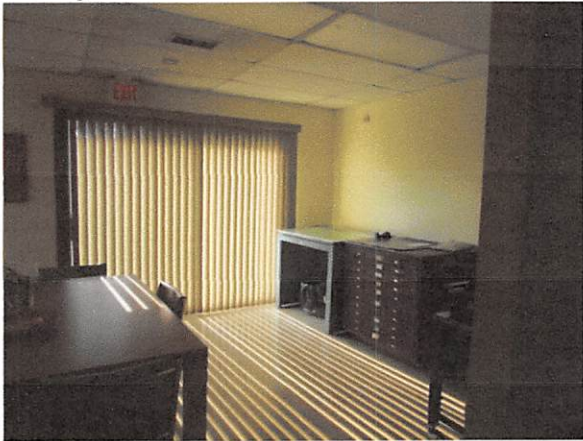
Additional Pictures 4605 Irvine Street



Entry Area



Office



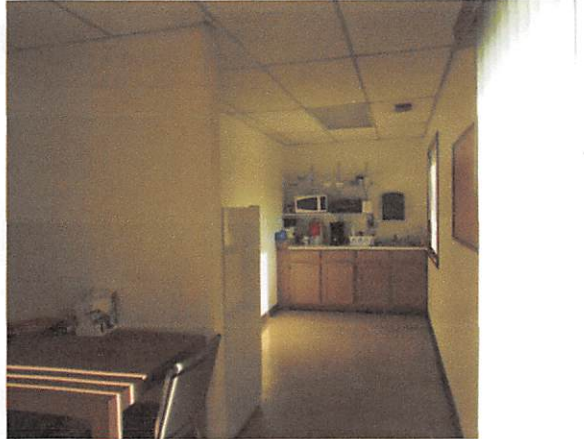
Office



Office



Office



Break Room/Kitchette

All information furnished regarding property for sale, rental or financing is from sources deemed reliable. No representation is made as to the accuracy thereof and it is submitted subject to errors, omissions, change of price, rental or other conditions, prior sale, lease or financing, or withdrawal notice.

**COMMERCIAL DIVISION – 412.422.1600 / 412.422.9236 fax
MANAGEMENT DIVISION - 412.422.9200**



Office



Garage Area



Production Area



Production Areas



Warehouse Area/Garage



View Of Bay Door



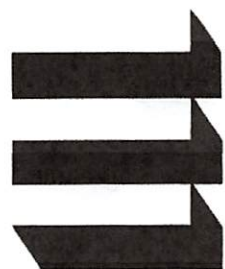
Office Hall-4 Feet Wide



Grass Court Yard



Electric panels



**Equity
Real
Estate**

2029 Murray Avenue – Pittsburgh, PA 15217