

19400 SW Teton Ave

Industrial Space in Tualatin, OR



For Sublease

Property Overview

 19400 SW Teton Ave, Tualatin, OR 97062

+ Size: 53,990 SF

+ Dock Doors: 7

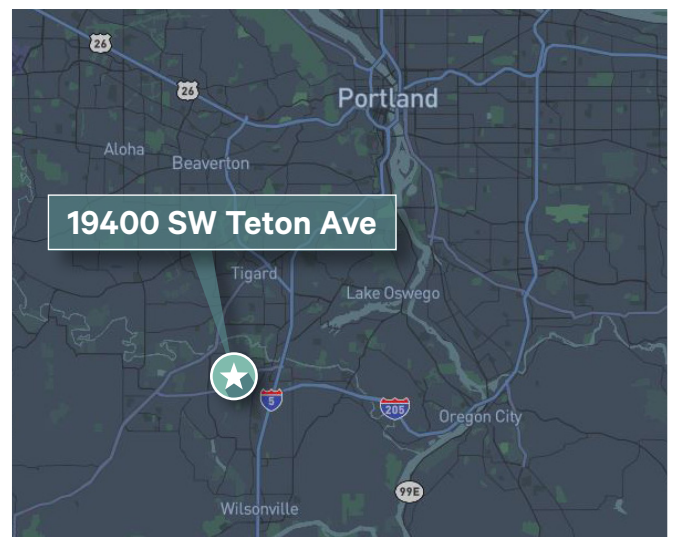
+ Grade Doors: 2

+ Clear Height: 20'

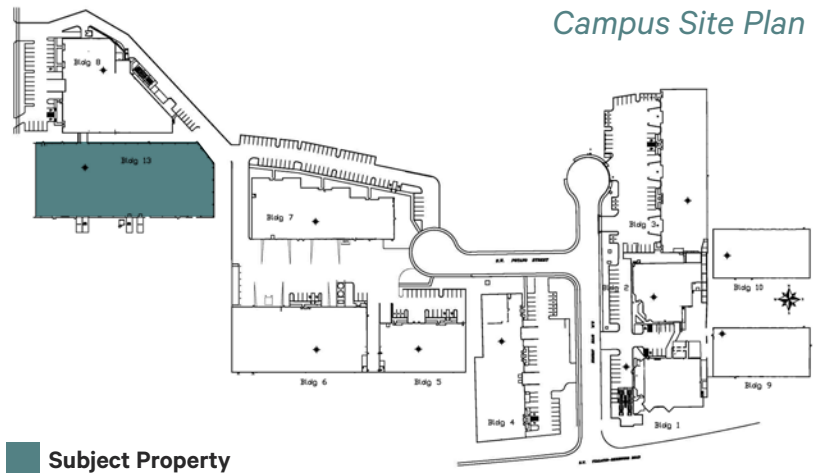
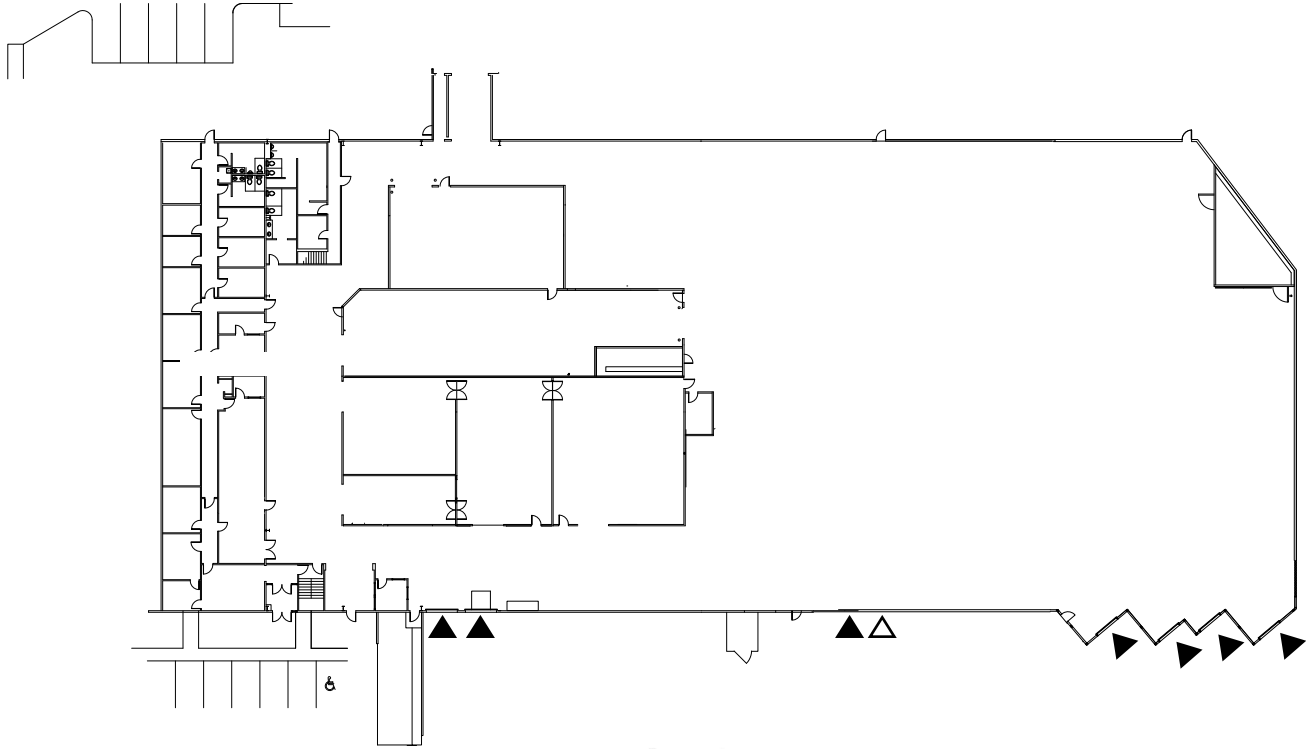
+ Year Built: 1979

+ Sublease Expiration:
6/30/2035

+ **Call for Rate Quote**



Building Plan



Contact Us

Stuart Skaug, SIOR
Executive Vice President
+1 503 221 4822
Stuart.Skaug@cbre.com

Cara Nolan, SIOR
Senior Vice President
+1 503 221 4840
Cara.Nolan@cbre.com

© 2024 CBRE, Inc. All rights reserved. This information has been obtained from sources believed reliable, but has not been verified for accuracy or completeness. You should conduct a careful, independent investigation of the property and verify all information. Any reliance on this information is solely at your own risk. CBRE and the CBRE logo are service marks of CBRE, Inc. All other marks displayed on this document are the property of their respective owners, and the use of such logos does not imply any affiliation with or endorsement of CBRE. Photos herein are the property of their respective owners. Use of these images without the express written consent of the owner is prohibited.