



**BUILT-OUT OFFICE SPACE AVAILABLE**



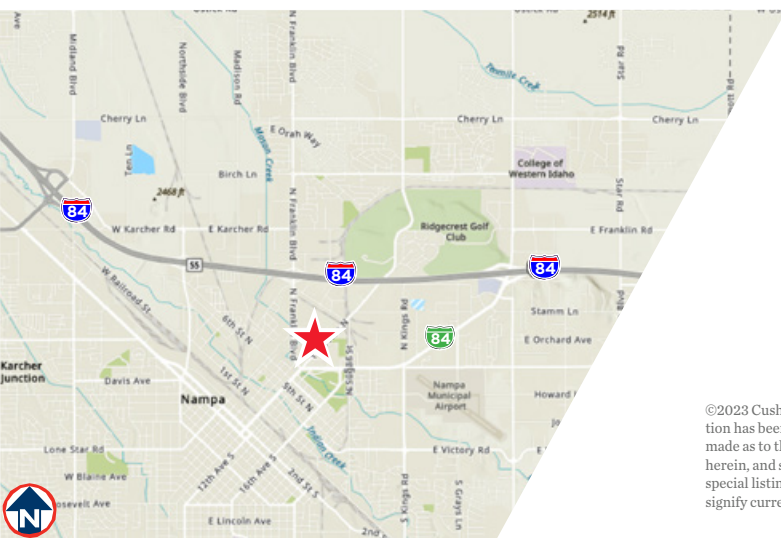
## MASON CREEK OFFICE SPACE

1931 East Plaza Loop  
Nampa, Idaho 83687

**1,058 SF FOR LEASE**

### PROPERTY HIGHLIGHTS

Available	1,058 SF
Lease Rate	\$18.00/SF FSEJ
Space Status	Move-In Ready
Building Size	7,200 SF Total
Lot Size	1.21 Acres
Zoning	IL - Light Industrial
Parking	20 Stalls On-Site
Parcel Number	R1218110900
LockBox	No, Contact Agents to Tour



**BREE WELLS**  
Senior Associate  
Office | Capital Markets  
+1 208 287 9492  
bree.wells@cushwake.com

**JENNIFER MCENTEE**  
Senior Director  
Office | Capital Markets  
+1 208 287 9495  
jennifer.mcentee@cushwake.com

999 W Man St., Suite 1300, Boise, Idaho  
Main +1 208 287 9500 | Fax +1 208 287 9501  
cushmanwakefield.com

©2023 Cushman & Wakefield. All rights reserved. The information contained in this communication is strictly confidential. This information has been obtained from sources believed to be reliable but has not been verified. No warranty or representation, express or implied, is made as to the condition of the property (or properties) referenced herein or as to the accuracy or completeness of the information contained herein, and same is submitted subject to errors, omissions, change of price, rental or other conditions, withdrawal without notice, and to any special listing conditions imposed by the property owner(s). Any projections, opinions or estimates are subject to uncertainty and do not signify current or future property performance.

# MASON CREEK PLAZA

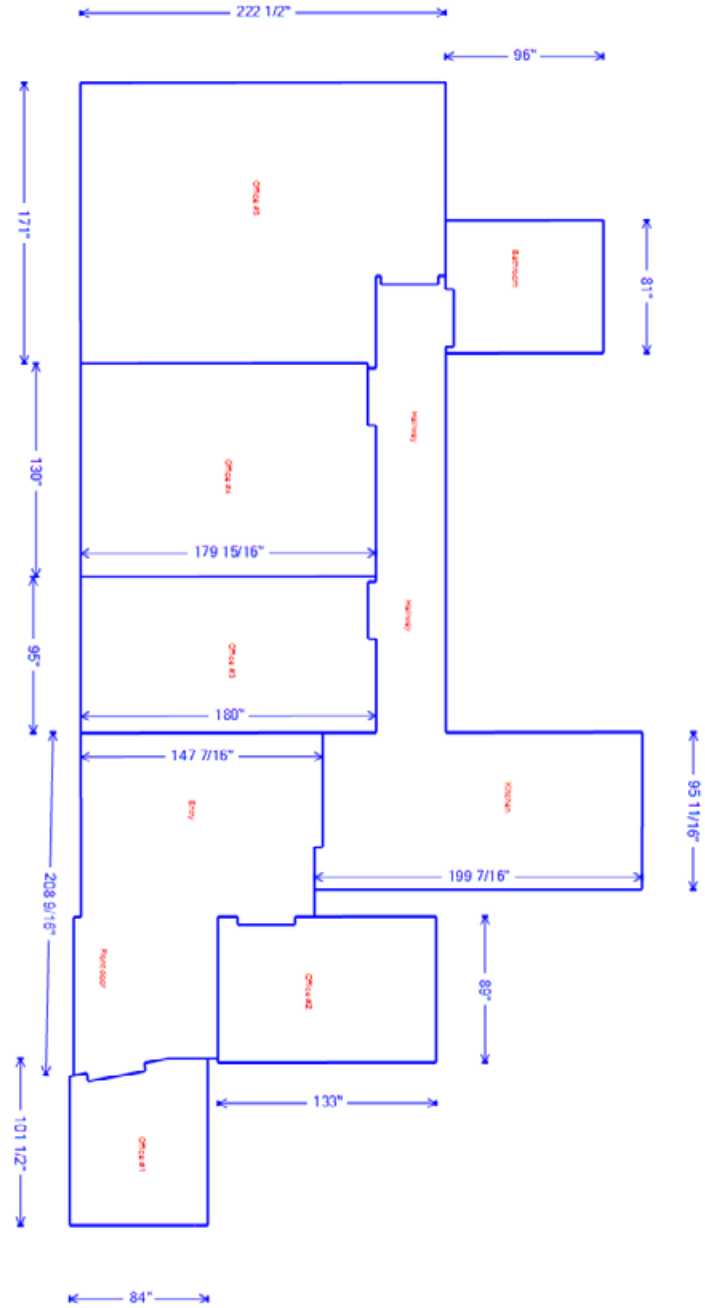
1931 East Plaza Loop, Nampa, Idaho 83687

1,058 SF FOR LEASE - \$18.00/SF FSEJ



## LISTING FEATURES

- Built-out office space located off Franklin Blvd near 11th Avenue North - [Google 360 View](#)
- Space consists of reception area, private offices, conference room, breakroom with kitchenette, and restroom
- Former contractors office, ideal location for a tenant looking for easy I-84 access to service the entire Treasure Valley - less than 1 mile to on/off ramp 36
- Building includes on-site parking stalls as well as street side parking
- Surrounding tenants include Nampa Floors & Interiors, Powerhouse Electric, Standard Plumbing Supply and other professional service providers
- Contact agents to discuss various uses and to schedule a tour today!!!



**BREE WELLS**  
Senior Associate  
Office | Capital Markets  
+1 208 287 9492  
bree.wells@cushwake.com

**JENNIFER MCENTEE**  
Senior Director  
Office | Capital Markets  
+1 208 287 9495  
jennifer.mcentee@cushwake.com

999 West Main Street, Ste 1300  
Boise, Idaho 83702  
Main +1 208 287 9500  
Fax +1 208 287 9501  
**cushmanwakefield.com**



# MASON CREEK PLAZA

1931 East Plaza Loop, Nampa, Idaho 83687

1,058 SF FOR LEASE - \$18.00/SF FSEJ



**MOVE-IN READY**





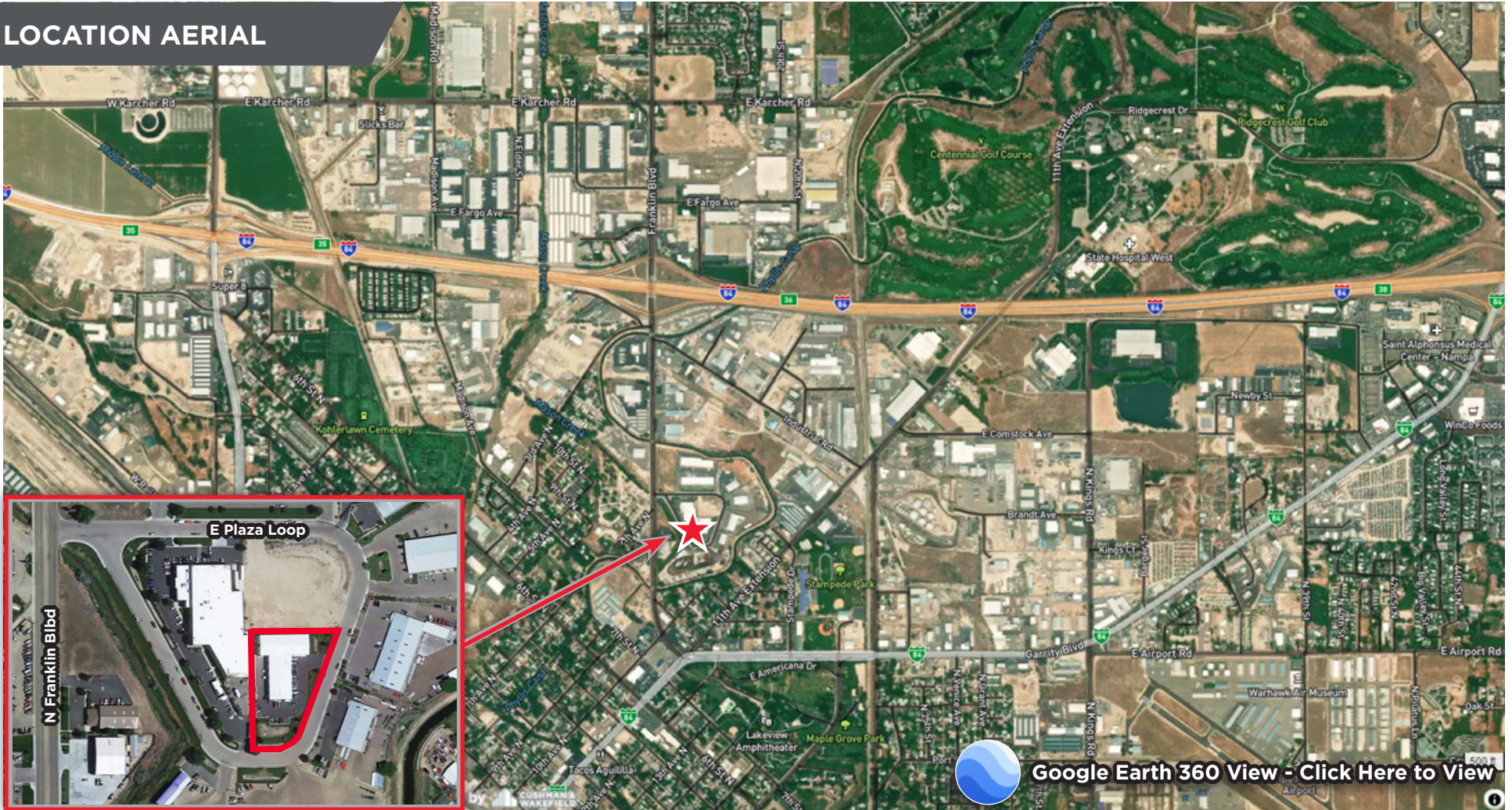
# MASON CREEK PLAZA

1931 East Plaza Loop, Nampa, Idaho 83687

1,058 SF FOR LEASE - \$18.00/SF FSEJ



## LOCATION AERIAL



[Google Earth 360 View - Click Here to View](#)