



# PROMINENT POINTE I&II

PROMINENT POINTE  
1

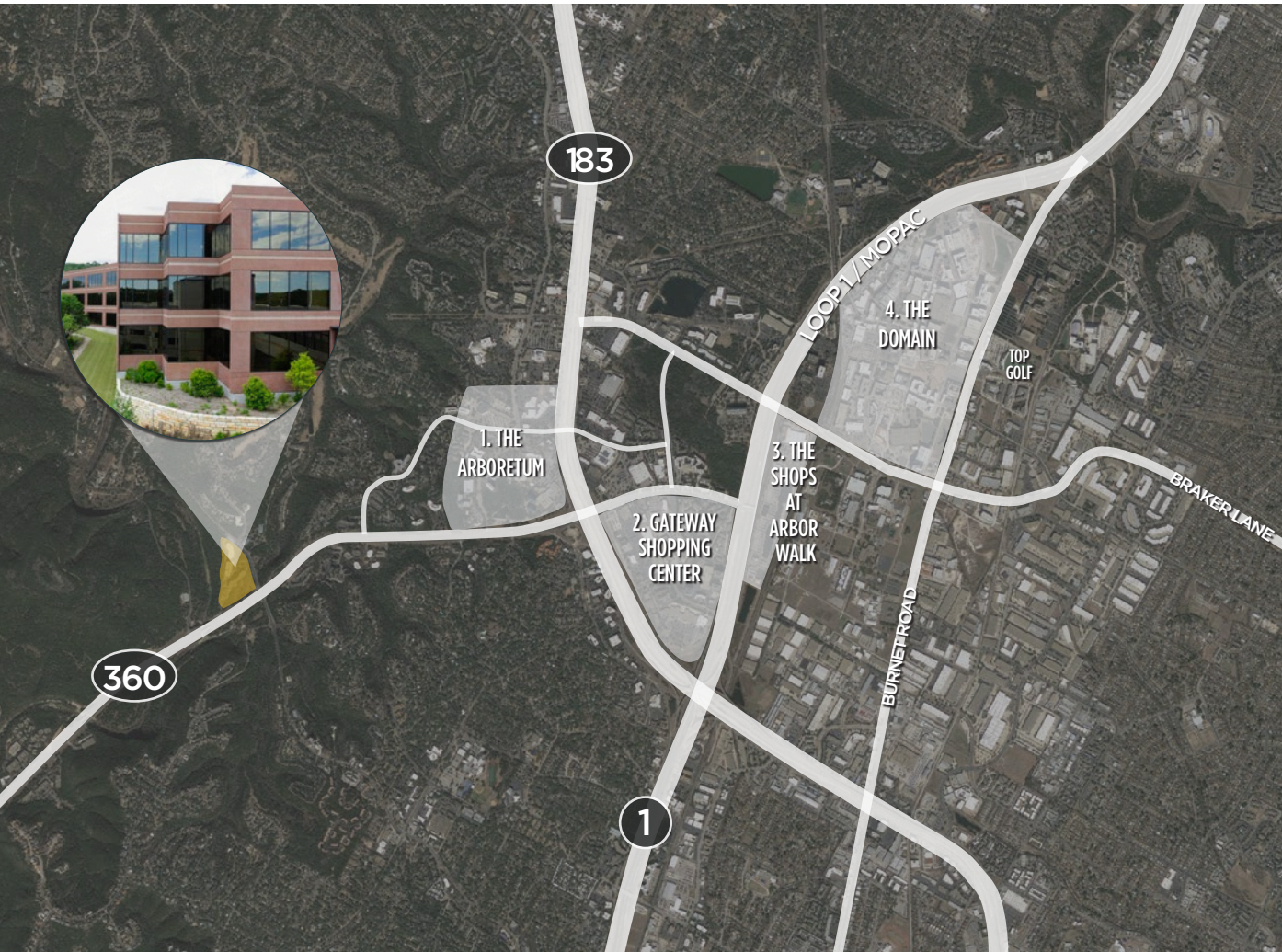


**CUSHMAN &  
WAKEFIELD**

8310-1 N. Capital of Texas Hwy | Austin, TX 78731



# LOCATION + AMENITIES



## 1 THE ARBORETUM

- Amy's Ice Cream
- Barnes & Noble
- Blue Baker
- Brio Tuscan Grille
- Cheesecake Factory
- Corner Bakery
- Fire Bowl Café
- Five Guys Burgers
- Francesca's
- Jimmy John's
- Jos. A. Bank
- Estancia
- Eddie V's
- Hanara Sushi & Grill
- La Madeline
- Macaroni Grill
- Manuel's
- Newk's
- Pottery Barn
- Snap Kitchen
- Starbucks Coffee
- Trader Joe's
- Trulucks
- William Sonoma
- Z' Tejas
- Zoe's Kitchen

## 3 THE SHOPS AT ARBOR WALK

- BJ's Brewhouse
- Chipotle
- DSW
- Home Depot
- Lupe Tortilla
- Marshall's
- Masala Wok
- Mighty Fine Burgers
- Natural Grocers
- Potbelly
- Salata
- Spec's

## 4 THE DOMAIN

- Athleta
- Anthropologie
- Apple
- California Pizza Kitchen
- Cru Food and Wine Bar
- Culinary Dropout
- Dillard's
- Fleming's
- Gloria's Latin Cuisine
- iPic Theaters
- J. Crew
- JINYA Ramen Bar
- Kendra Scott
- Kona Grill
- L'Occitane
- LUSH
- Macy's
- Madewell
- Michael Kors
- Neiman Marcus
- Nordstrom
- North Italia
- Punch Bowl Social
- Shake Shack
- Starbucks
- Sur La Table
- Tarka Indian Kitchen
- Thai Kun
- Tiffany & Co.
- Velvet Taco
- Victoria's Secret
- White House/Black Market
- Yard House

## 2 GATEWAY SHOPPING CENTER

- Aaron Brothers
- Bed Bath & Beyond
- Best Buy
- Buca di Beppo
- Crate & Barrel
- David's Bridal
- Haru Sushi
- J. Crew Mercantile
- Men's Warehouse
- Nordstrom Rack
- Old Navy
- Panera Bread
- REI
- Regal Cinemas
- Saks Off 5th
- Taco Cabana
- The Container Store
- Ulta Beauty
- Whole Foods Market

## DRIVE TIMES



THE ARBORETUM



GATEWAY SHOPPING CENTER



ARBOR WALK



THE DOMAIN



UNIVERSITY OF TEXAS



DOWNTOWN AUSTIN



ABIA



**ADDRESS** 8310 N. Capital of Texas Hwy  
Austin, TX 78731

**TOTAL SF** I: 150,218 SF; II: 102,567 SF

**FLOORS** I: 4 stories; II: 3 stories

**PARKING** 3.70 : 1,000 SF Structured

**AVAILABILITY** **BUILDING I:**  
Suite 155 - 3,775 SF  
Suite 215 - 2,072 SF  
Suite 340 - 2,046 SF  
Suite 370 - 6,022 SF  
Suite 475 - 4,004 SF

**BUILDING II:**  
Suite 250 - 16,479 SF

#### FEATURES

- Convenient access to 360, 183 & Mopac Expy
- Located at lighted intersection on 360
- Tenant lounge with on-site deli
- Full service gym with showers & lockers
- Shared conference room
- Move-in ready suites available
- On-site property management
- Structured & surface parking
- Beautiful Hill Country views

# AMENITY CENTER + FOOD TRUCK COURT



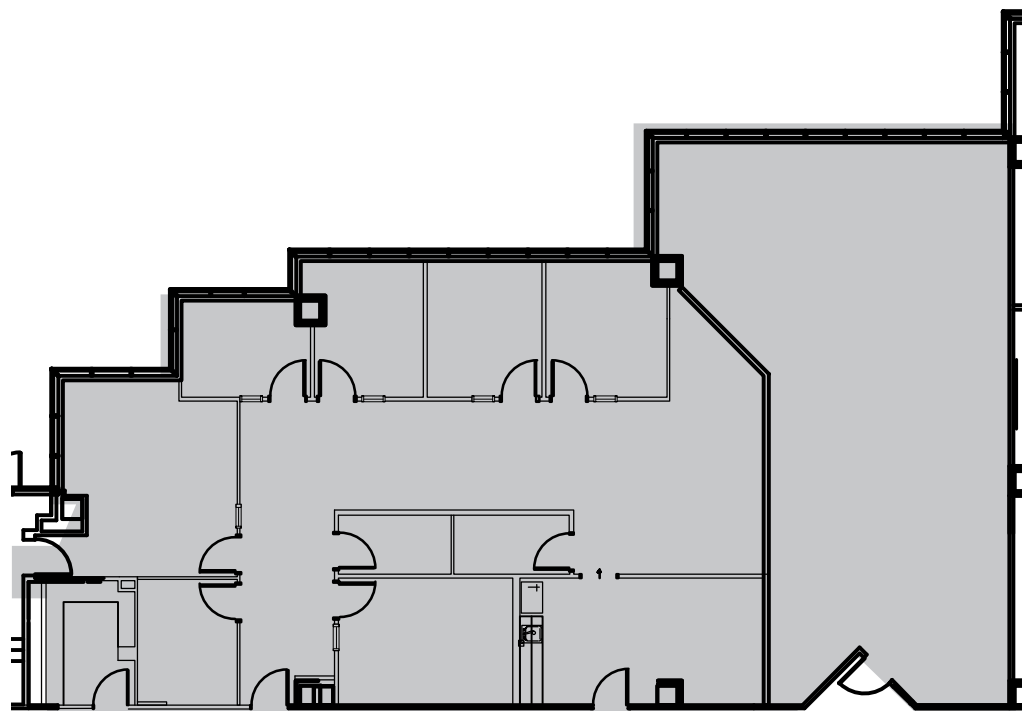
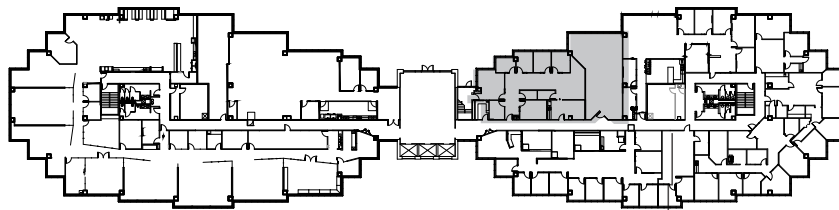


PROMINENT POINTE  
I&II

## BUILDING I

1ST FLOOR  
Suite 155: 3,775 SF\*

\*Available 02.01.21



### LEASING INFORMATION:

**KEVIN GRANGER**  
512.814.3403  
kevin.granger@cushwake.com

**BRIAN LIVERMAN**  
512.814.3402  
brian.liverman@cushwake.com



CUSHMAN &  
WAKEFIELD

**BUILDING I**

**2ND FLOOR**  
**Suite 215: 2,072 SF**

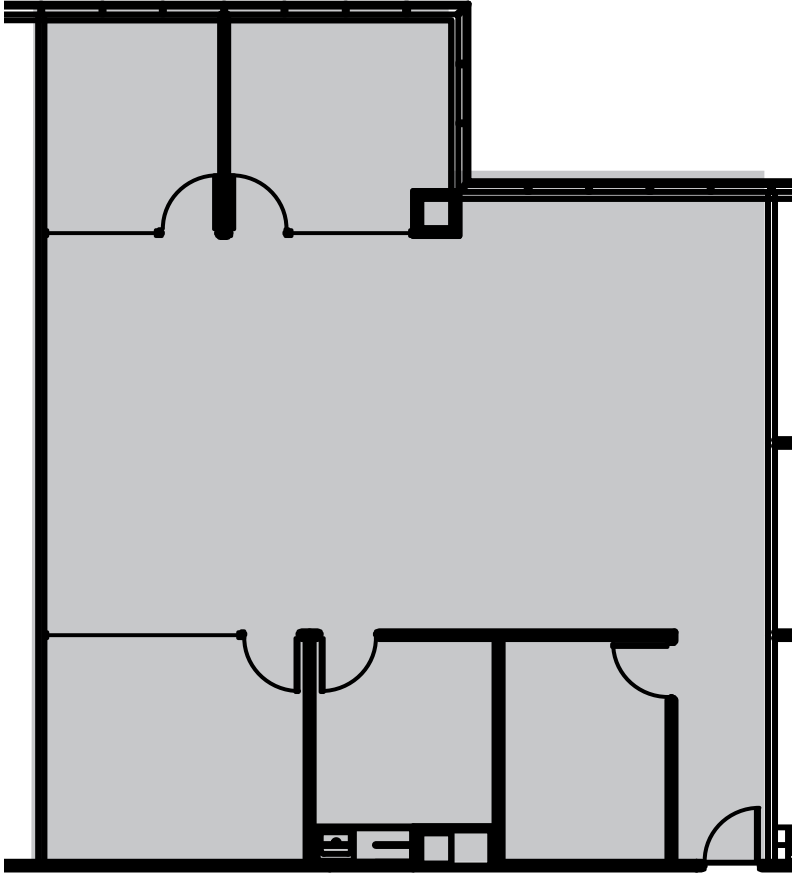
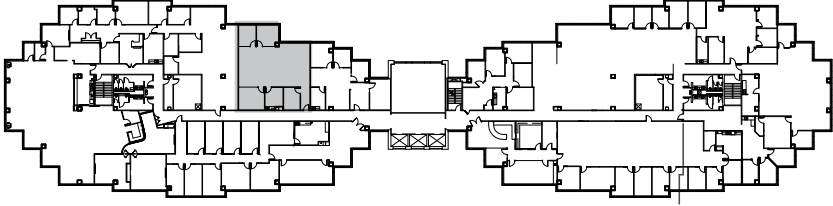
**LEASING INFORMATION:**

**KEVIN GRANGER**  
512.814.3403  
kevin.granger@cushwake.com

**BRIAN LIVERMAN**  
512.814.3402  
brian.liverman@cushwake.com



**CLICK FOR VIRTUAL TOUR** 



**BUILDING I**

**3RD FLOOR**  
**Suite 330: 2,606 SF**

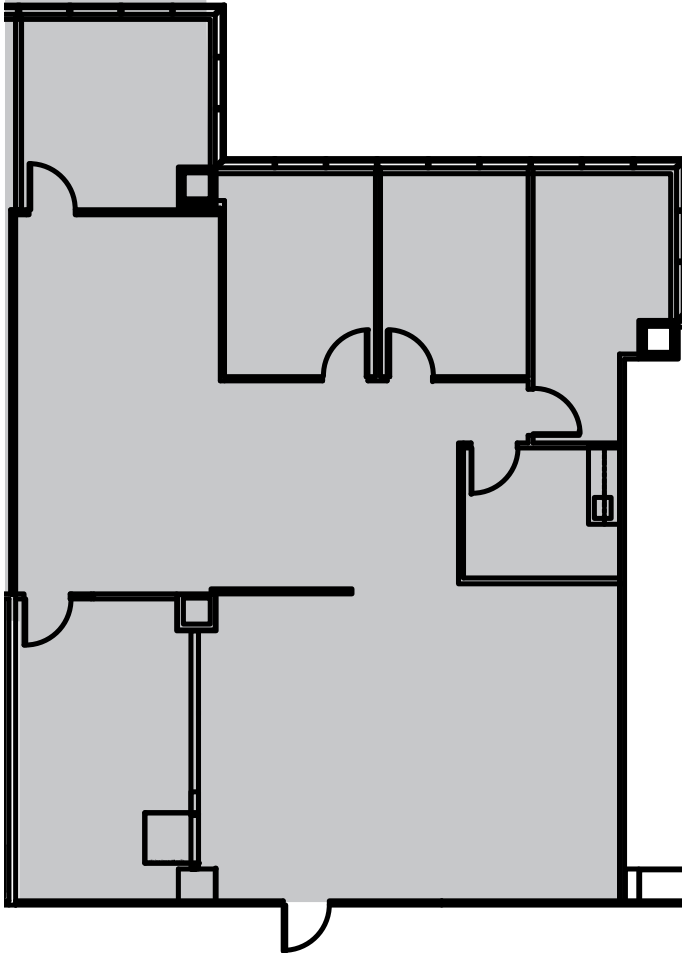
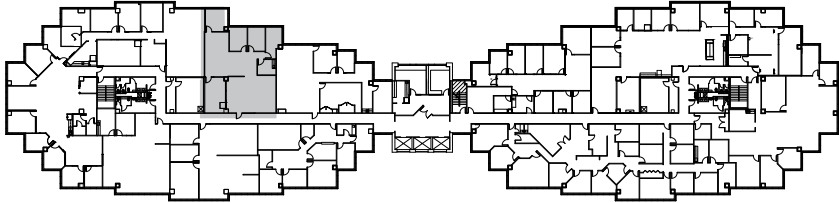
**LEASING INFORMATION:**

**KEVIN GRANGER**  
512.814.3403  
kevin.granger@cushwake.com

**BRIAN LIVERMAN**  
512.814.3402  
brian.liverman@cushwake.com



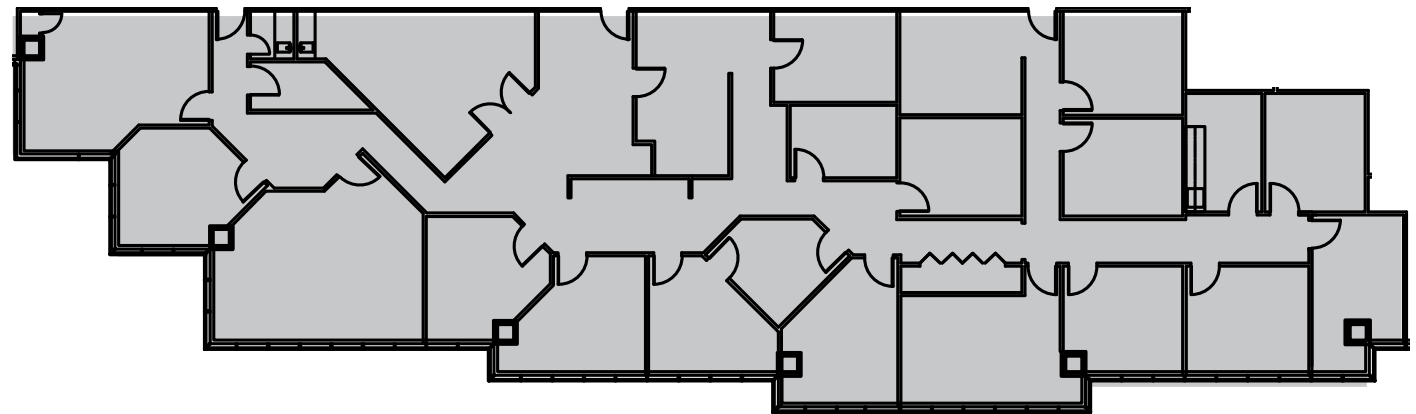
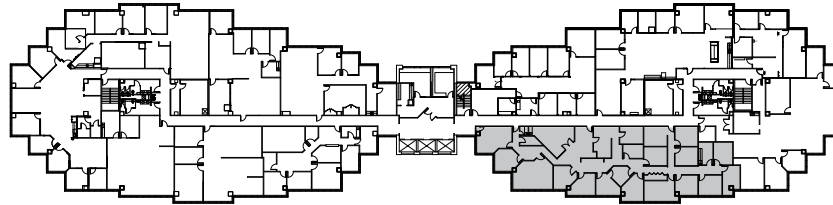
**CLICK FOR VIRTUAL TOUR** 



**BUILDING I**

**3RD FLOOR**  
**Suite 370: 6,022 SF\***

\*Available 2.01.21



**LEASING INFORMATION:**

**KEVIN GRANGER**  
512.814.3403  
kevin.granger@cushwake.com

**BRIAN LIVERMAN**  
512.814.3402  
brian.liverman@cushwake.com

**BUILDING I**

4th FLOOR  
Suite 475: 4,004 SF

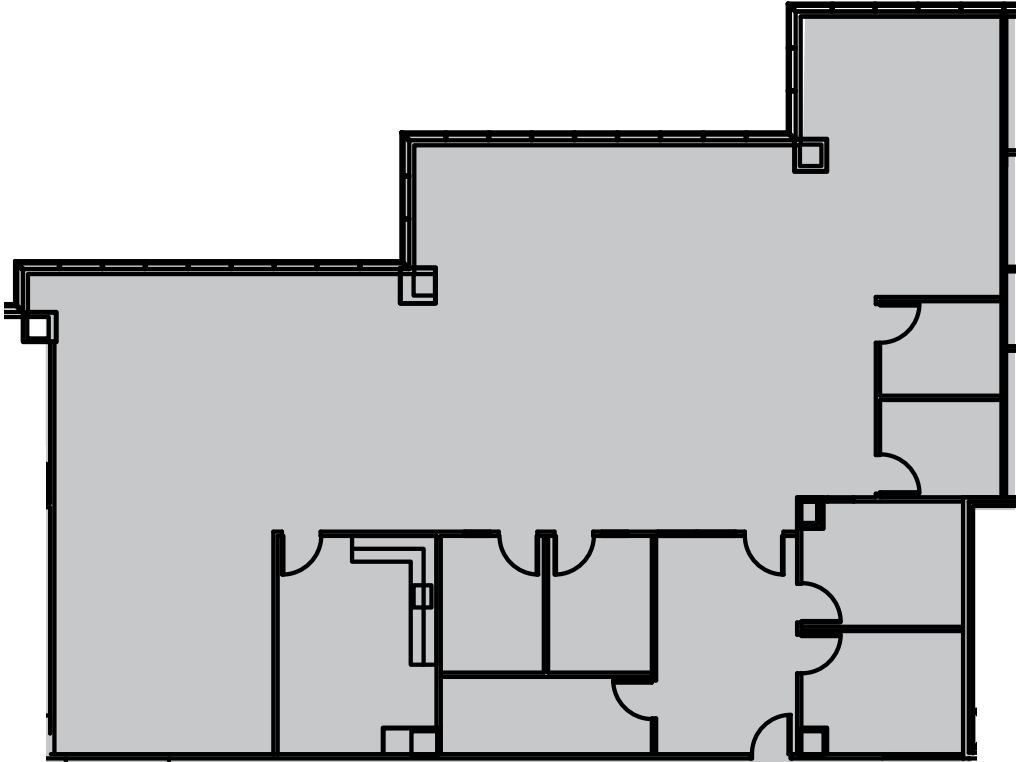
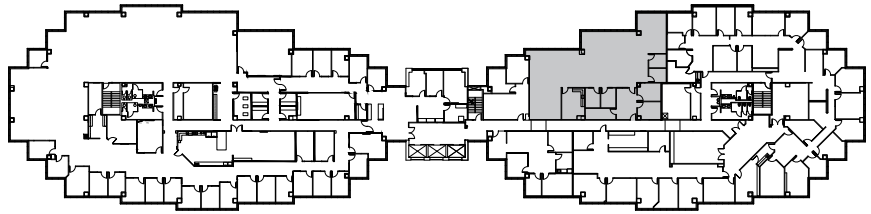
**LEASING INFORMATION:**

**KEVIN GRANGER**  
512.814.3403  
kevin.granger@cushwake.com

**BRIAN LIVERMAN**  
512.814.3402  
brian.liverman@cushwake.com



CLICK FOR VIRTUAL TOUR 



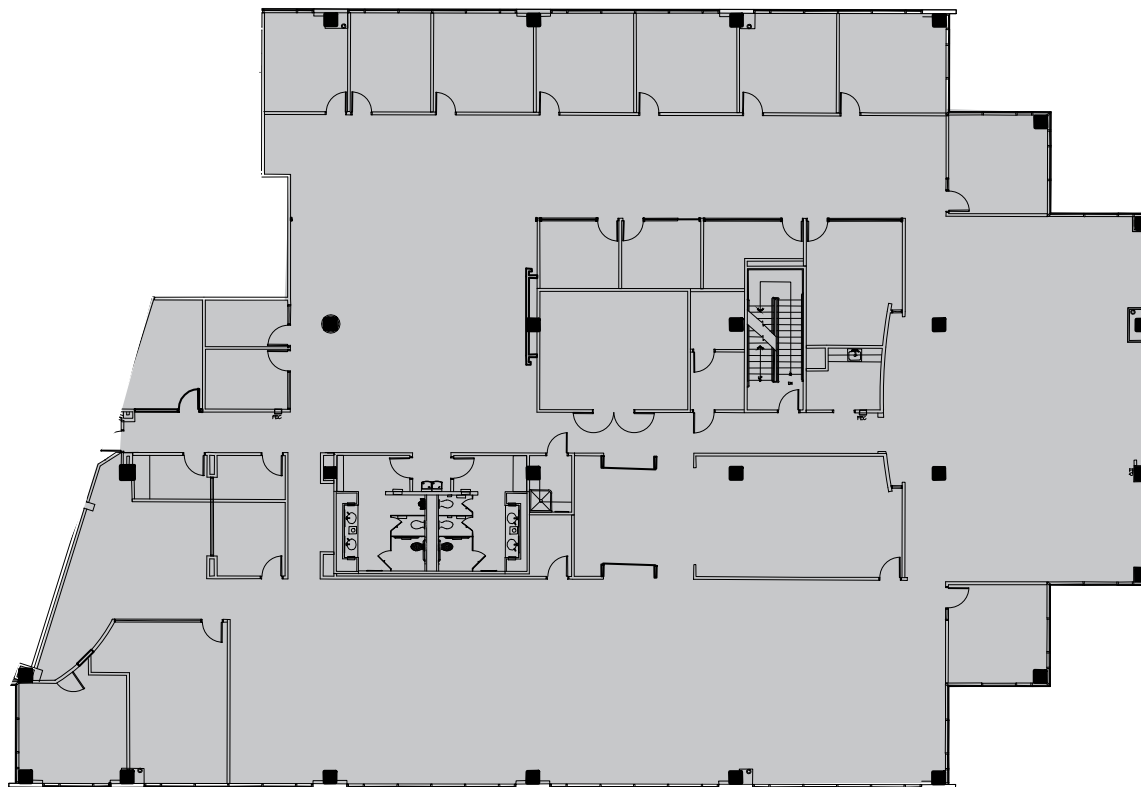
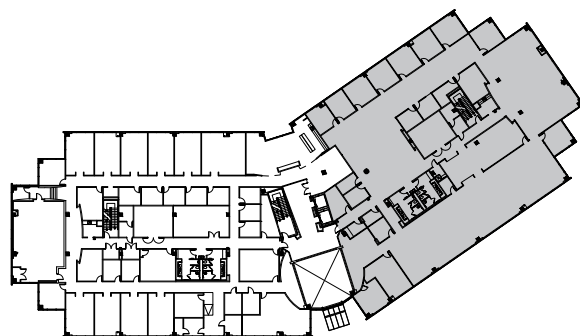


PROMINENT POINTE  
I&II

## BUILDING II

2nd FLOOR  
Suite 250: 16,479 SF\*

\*Available 4.01.21



### LEASING INFORMATION:

**KEVIN GRANGER**

512.814.3403

[kevin.granger@cushwake.com](mailto:kevin.granger@cushwake.com)

**BRIAN LIVERMAN**

512.814.3402

[brian.liverman@cushwake.com](mailto:brian.liverman@cushwake.com)



CUSHMAN &  
WAKEFIELD