



3950 N Main St

3950 N Main St, Fall River, MA 02720



Jim Sabra

Equity Commercial Real Estate, Inc.
82 Sanford Rd, Westport, MA 02790
jsabra@equityrealestateinc.com
(508) 951-7994



3950 N Main St

\$16.92 /SF/YR

High visibility commercial space for lease offers a variety of possibilities including professional and medical space. High traffic count close to the Shaws/CVS Plaza, just minutes from route 24/79/195 and pending train station. This well-maintained property features 1344 +/- sq.ft. finished area on the ground floor with 3 office areas, a break room, storage area, and bathroom. Handicap accessible. Available for Rent December 1, 2023. Owner pays for water. Renter is responsible for gas and electric. Unit will come completely empty. This is a great location in a thriving area for any business. Schedule your showing today!...

- Heavy daytime traffic
- Close to routes 24/79/195
- High visibility
- Close to pending train station



Rental Rate:	\$16.92 /SF/YR
Property Type:	Office
Property Subtype:	Medical
Rentable Building Area:	3,784 SF
Year Built:	1994
Walk Score ®:	45 (Car-Dependent)
Transit Score ®:	26 (Some Transit)
Rental Rate Mo:	\$1.41 /SF/MO

1st Floor

Space Available	1,344 SF
Rental Rate	\$16.92 /SF/YR
Date Available	December 01, 2023
Service Type	Net
Space Type	Relet
Space Use	Office
Lease Term	3 Years

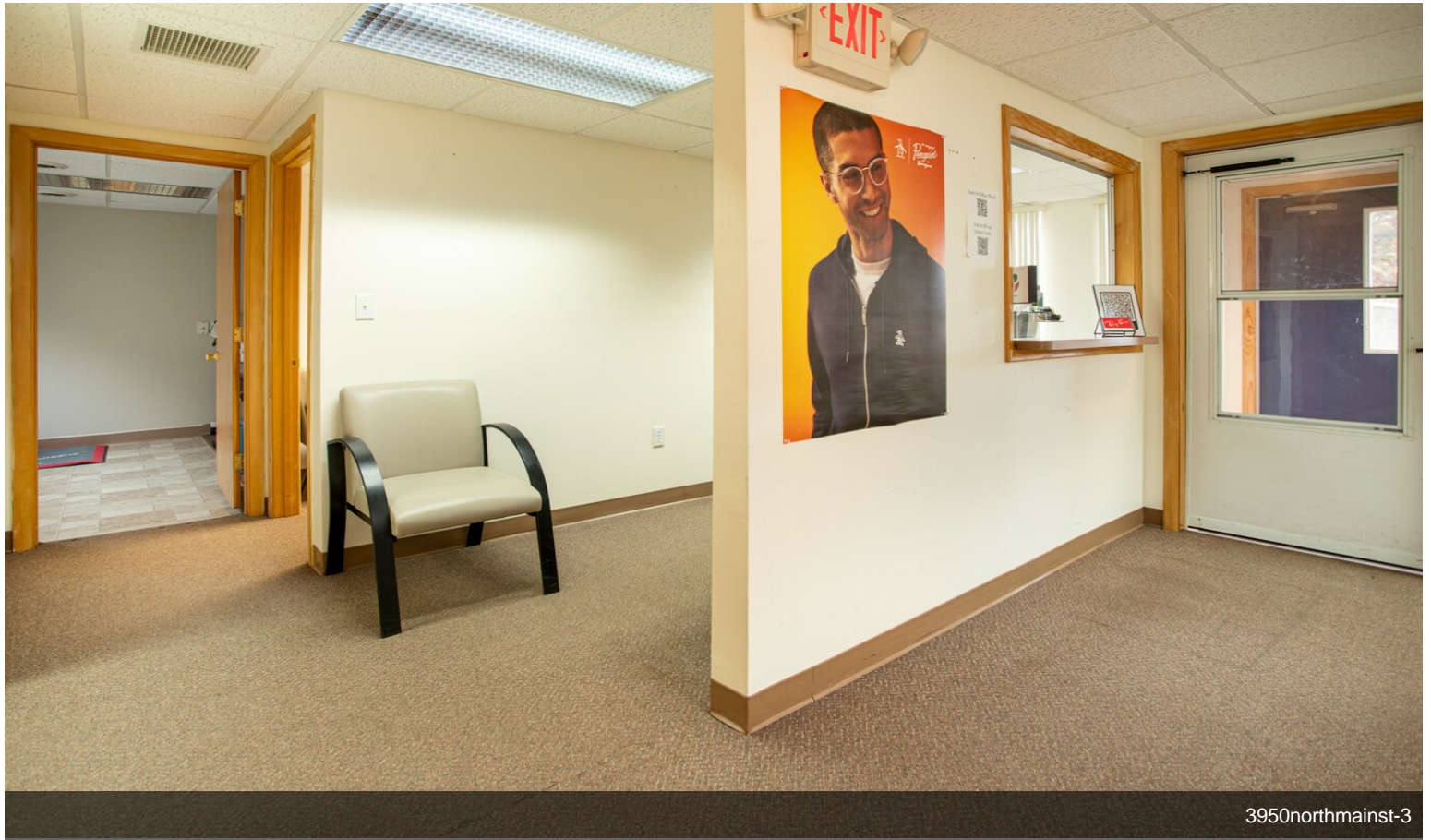
High visibility commercial space for lease offers a variety of possibilities including professional and medical space. High traffic count close to the Shaws/CVS Plaza, just minutes from route 24/79/195 and pending train station. This well-maintained property features 1344 +/- sq.ft. finished area on the ground floor with 3 office areas, a breakroom, storage, and bathroom. Handicap accessible. Available for Rent December 1, 2023. Owner pays for water. Renter is responsible for gas and electric. Unit will come completely empty. This is a great location in a thriving area for any business. Schedule your showing today!



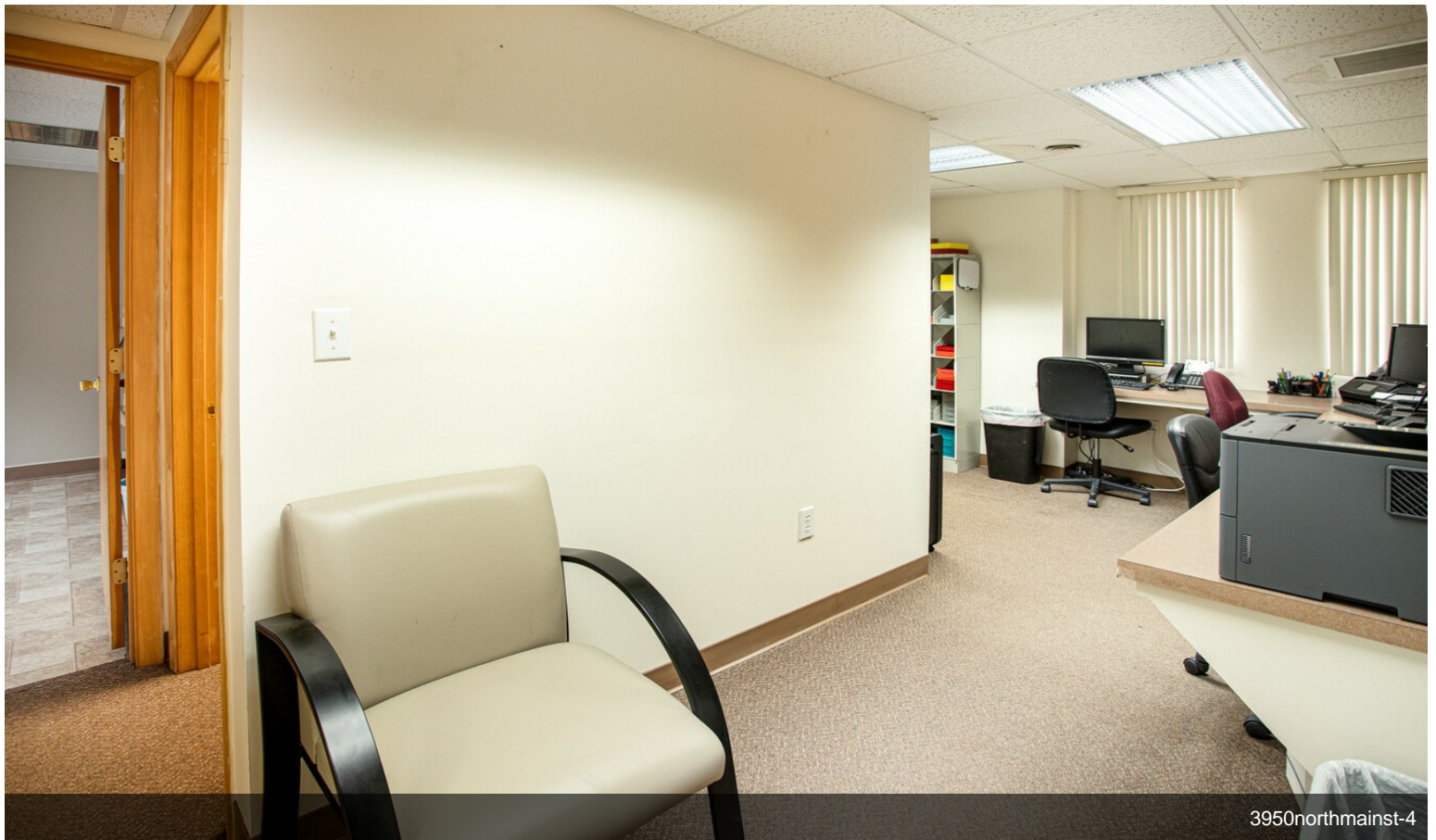
3950 N Main St, Fall River, MA 02720

High visibility commercial space for lease offers a variety of possibilities including professional and medical space. High traffic count close to the Shaws/CVS Plaza, just minutes from route 24/79/195 and pending train station. This well-maintained property features 1344 +/- sq.ft. finished area on the ground floor with 3 office areas, a break room, storage area, and bathroom. Handicap accessible. Available for Rent December 1, 2023. Owner pays for water. Renter is responsible for gas and electric. Unit will come completely empty. This is a great location in a thriving area for any business. Schedule your showing today!

Property Photos

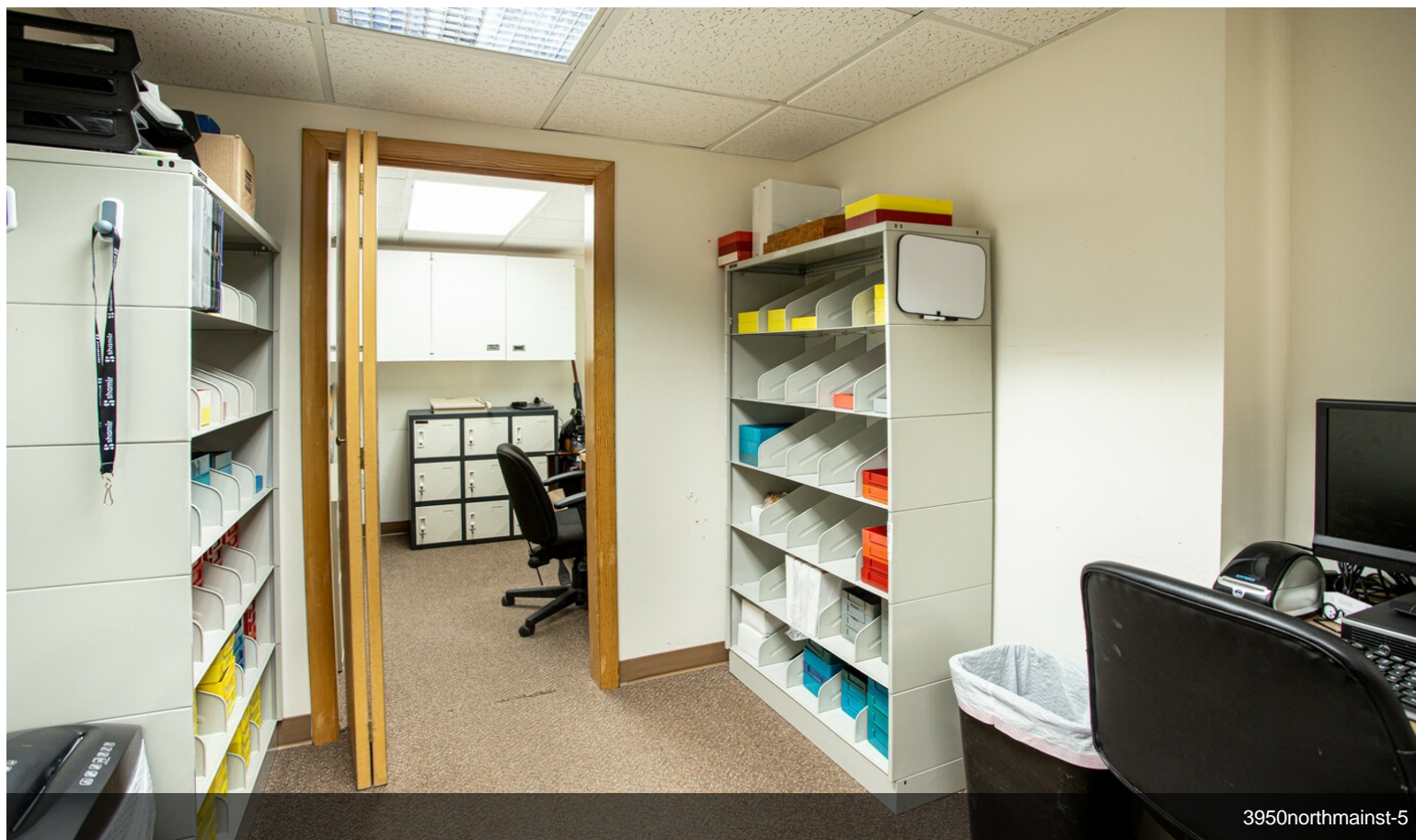


3950northmainst-3



3950northmainst-4

Property Photos



3950northmainst-5



3950northmainst-6

Property Photos



3950northmainst-7



PHOTO3

Property Photos



PHOTO2

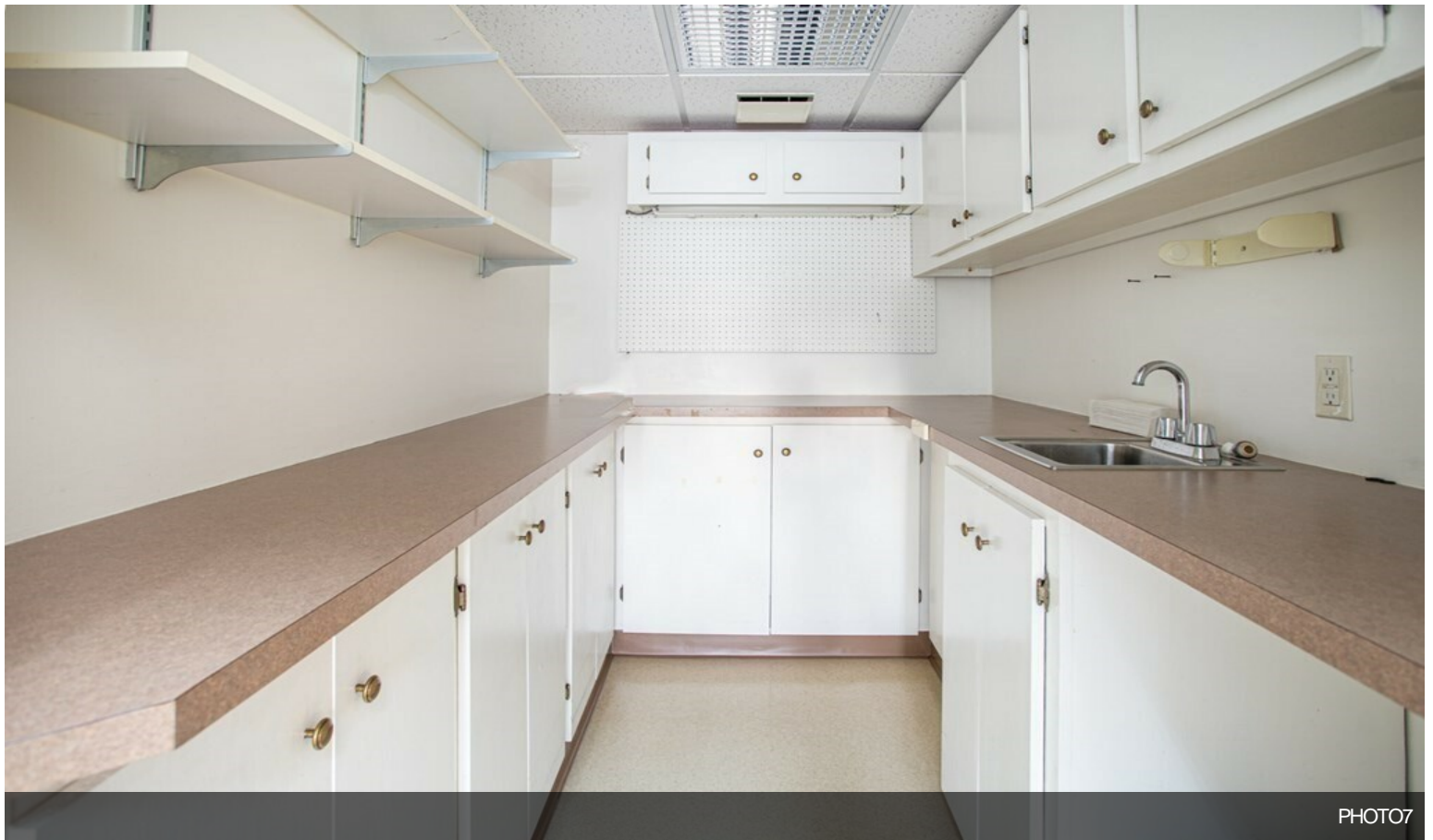


PHOTO7

Property Photos



Property Photos



PHOTO8



3950northmainst-12

Property Photos



3950northmainst-14



3950northmainst-15

Property Photos



3950northmainst-16



PHOTO16

Property Photos



PHOTO14

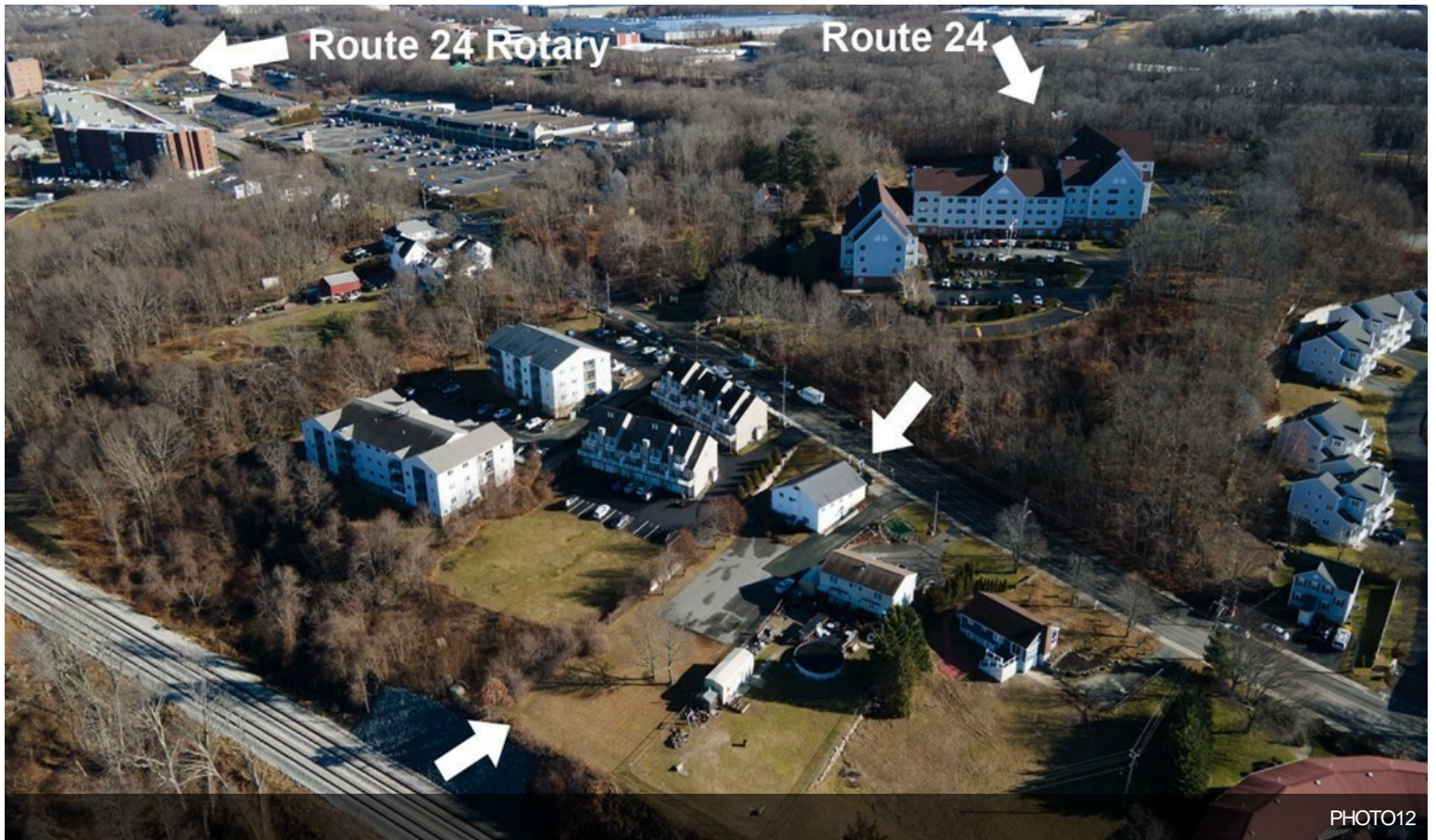


PHOTO12

Property Photos



PHOTO13