

FOR LEASE OR SALE | Former Bank with Drive Thru

1545 SUMTER STREET

Columbia, South Carolina

Mike Edwards
Senior Brokerage Associate
803.255.8607
mikeedwards@wilsonkibler.com

John Metts
Brokerage Associate
803.255.8631
john.metts@wilsonkibler.com



1111 Laurel Street, Columbia, S.C. 29201 | www.wilsonkibler.com

THE INFORMATION CONTAINED HEREIN HAS BEEN GIVEN TO US BY THE OWNER OF THE PROPERTY OR OTHER SOURCES WE DEEM RELIABLE. WE HAVE NO REASON TO DOUBT ITS ACCURACY, BUT WE DO NOT GUARANTEE IT. ALL INFORMATION SHOULD BE VERIFIED PRIOR TO PURCHASE OR LEASE.

1545 SUMTER STREET

Columbia, South Carolina 29201

LOCATION: The property is ideally located on the corner of Taylor and Sumter Streets just across from Prisma Health Baptist Hospital and adjacent to Hotel Trundle.

BUILDING SIZE: ±14,631 SF

AVAILABILITY: ±3,048 - ±14,631

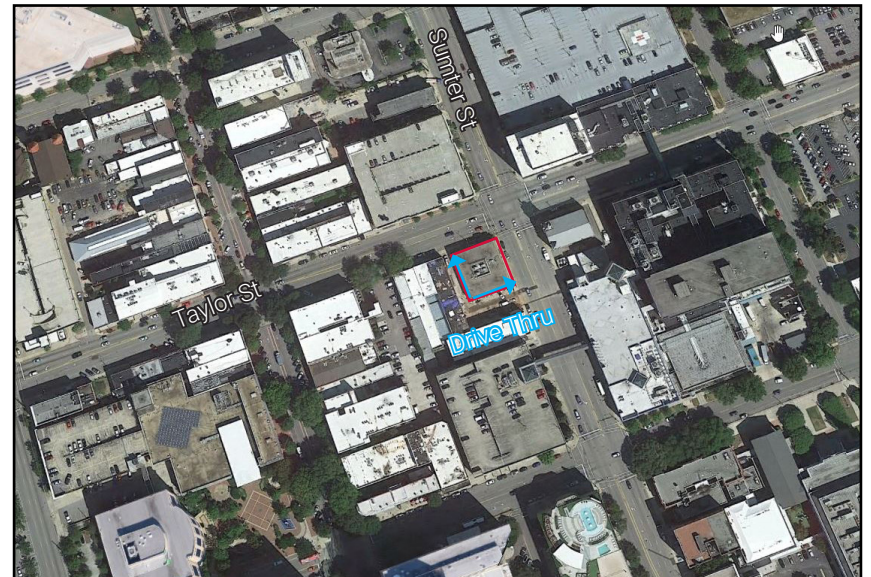
◆ Drive-thru available

PARKING: 3:1,000 SF

◆ Ample parking available in City Garage across Taylor Street

LEASE RATE: **\$23.00 PSF Full Service**

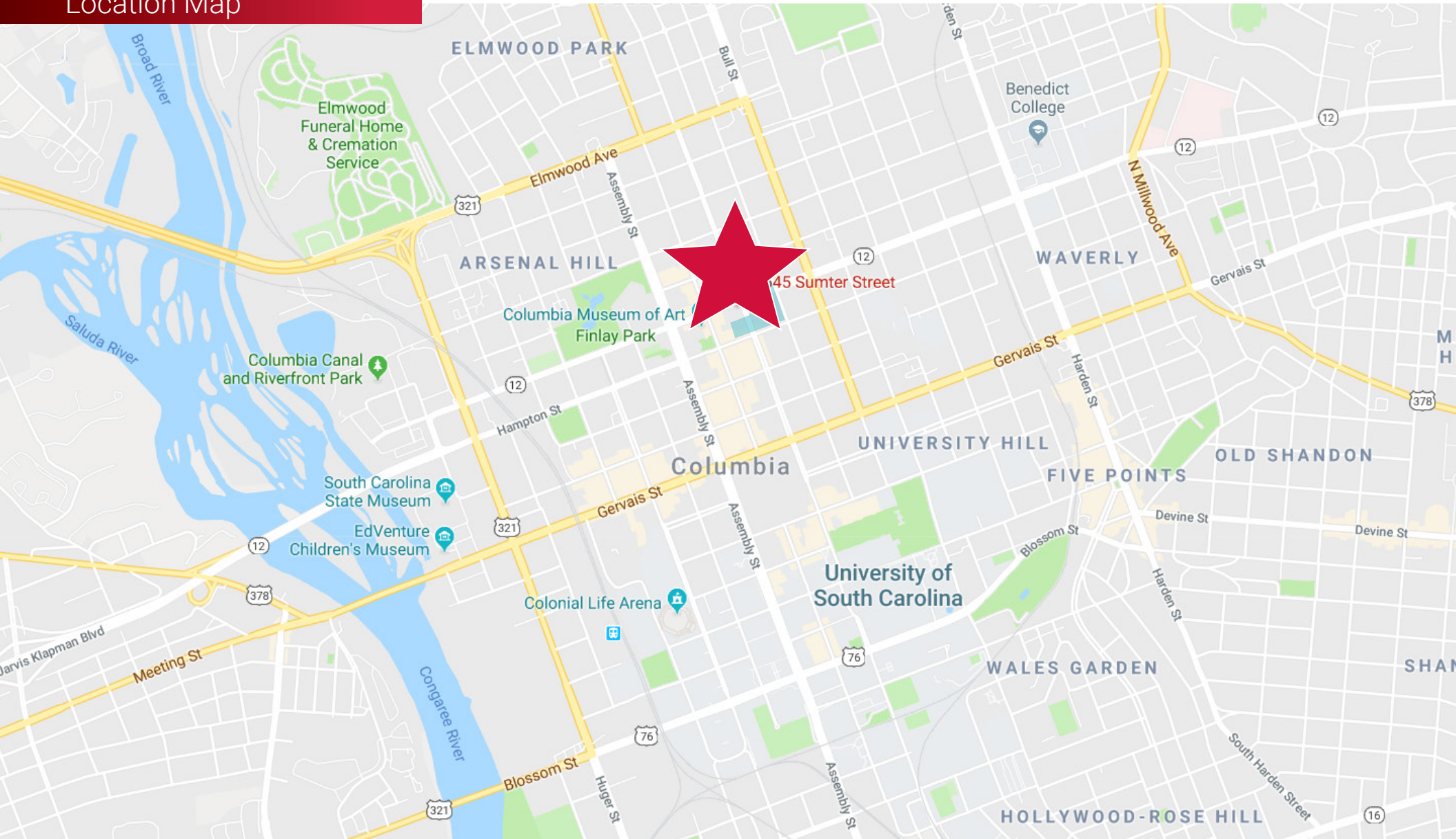
SALES PRICE: **\$1,300,000**



1545 SUMTER STREET

Columbia, South Carolina 29201

Location Map



1545 SUMTER STREET

Columbia, South Carolina 29201

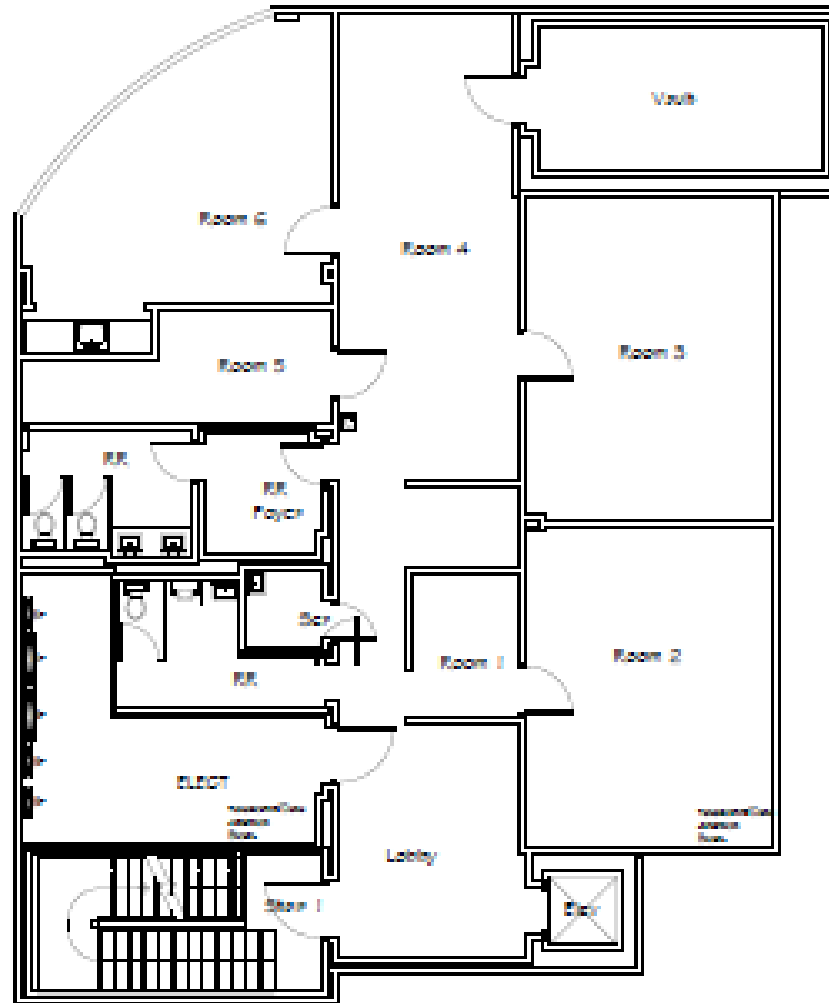
Attractions Aerial



1545 SUMTER STREET

Columbia, South Carolina 29201

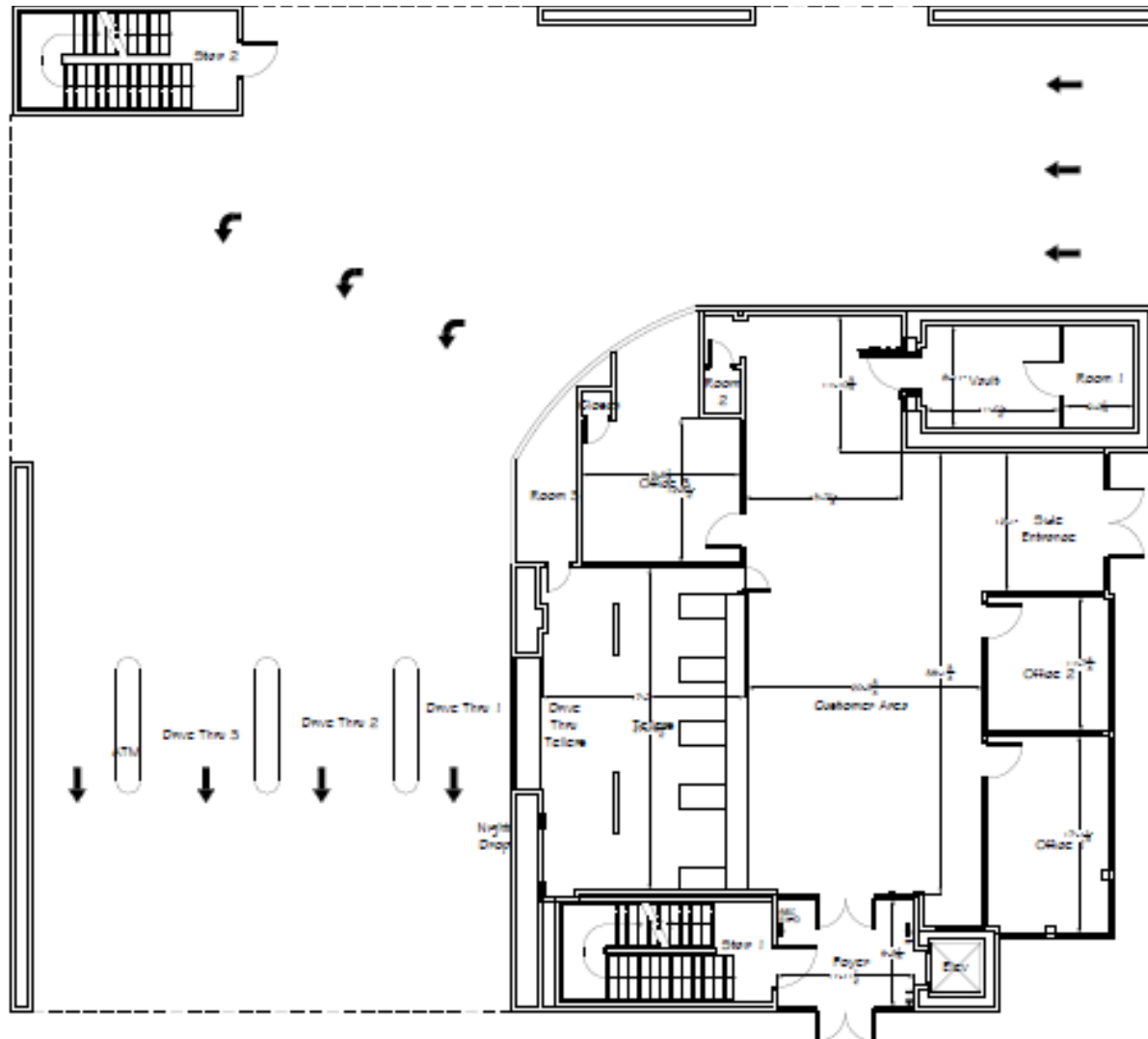
Basement Floorplan



1545 SUMTER STREET

Columbia, South Carolina 29201

First Floor Plan



1545 SUMTER STREET

Columbia, South Carolina 29201

Second Floor Plan

