

APPLICABLE CODE:

- FLORIDA BUILDING CODE 2017, 6TH EDITION
- FLORIDA PLUMBING CODE 2017, 6TH EDITION
- FLORIDA MECHANICAL CODE 2017, 6TH EDITION
- NATIONAL ELECTRICAL CODE 2011
- FLORIDA FIRE PREVENTION CODE 2017, 6TH EDITION, BASED ON NFPA 101, FIRE CODE, 2015 EDITION & NFPA 101 LIFE SAFETY CODE, 2015 EDITION

SCOPE OF WORK:

- SEPARATE THE BUILDING TO 3 SPACES WITH 3 DIFFERENT ADDRESSES
- 3058 (7,750 SQFT COVERED AREA), 3058-1 (6,250 SQFT CLOSED COVERED AREA)
- 3058-2 (3,280 SQFT COVERED AREA AND 2,400 SQFT OPEN COVERED AREA)
- WITH SAME ELECTRICAL METER
- INSTALL NEW 2-HR RATED DIMISSING WALL TO SEPARATE 3058 AND 3058-1 SPACES
- INSTALL FILLER BLOCK WALL AND NEW 3'X6'-8" METAL DOOR W/ PUSH BAR HARDWARE
- INSTALL FILLER 2-HR RATED WALL TO SEPARATE 3058-1, AND 3058-2 SPACES
- INSTALL NEW AND CORRECT ALL EXISTING EXT., EXIT/EMERGENCY, EMERGENCY SIGNS
- NO PLUMBING, ELECTRICAL OR AC WORK NEEDED

CODE SUMMARY:

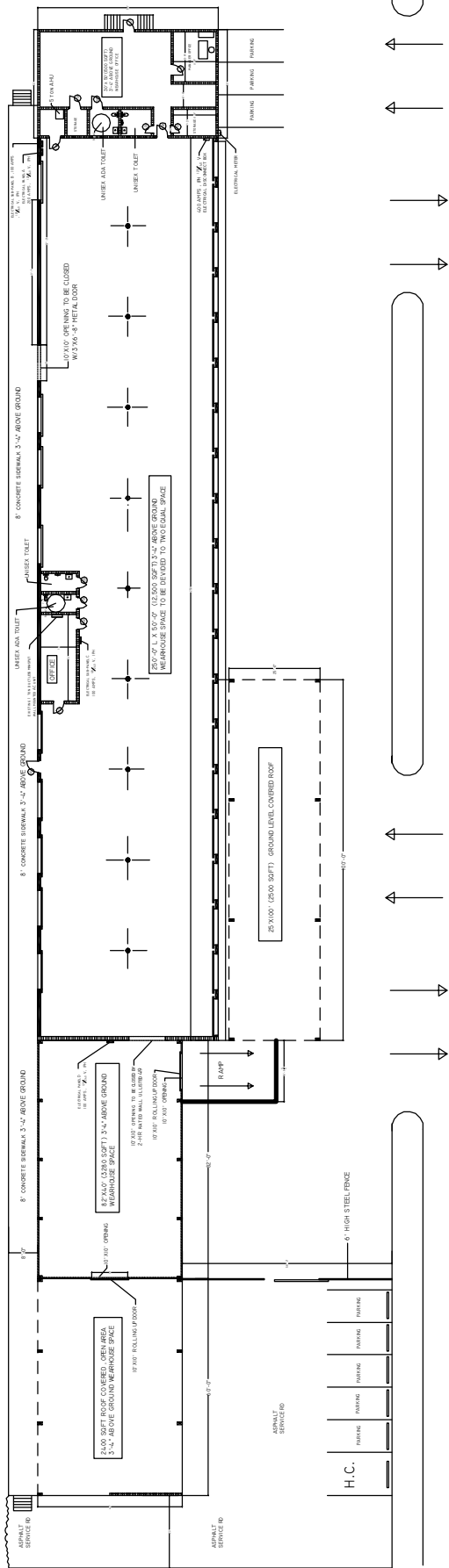
- CONSTRUCTION TYPE **IB** NO. FIRE SPRINKLER
- 1 STORY BUILDING IN CATEGORY II AREA
- EXISTING WEARHOUSE SPACE 17280 SQFT CLOSED COVERED AREA + 2400 SQFT OPEN COVERED = 19,680 SQFT, 3'-4" ABOVE GROUND, AND 2500 SQFT GROUND LEVEL COVERED AREA
- OCCUPANCY : STORAGE (METAL NON-COMBUSTIBLE MATERIAL) LOW-HAZARD STORAGE, GROUP S-2
- OCCUPANCY DESIGN LOAD :
- WAREHOUSE (GROSS AREA) 19680+2500 SQFT= 22180 SQFT=1500 SQFT OFFICE= 20680/500 = 42 OCCUPANTS
- 2- OFFICE AREA 1500 SQFT / 100=15 OCCUPANTS
- TOTAL OCCUPANCY 42+15=57 OCCUPANTS
- DESIGN WIND SPEED 130 MPH
- WINDPORT FACTORS 1.00 APED
- BUILDING EXPOSE IS B
- INTERNAL PRESSURE FACTOR Q=18
- CLADDING AND COMPONENTS PRESSURE IS:
- A=3' WIND PRESSURE (ZONE 4), + 30.4, -33.0 PSF

EXISTING WALL LEGEND

- EXISTING/NEW 8" EXTERIOR/INTERIOR CMU WALL
- EXISTING 10" EXTERIOR PRE-CAST CONCRETE WALL
- EXISTING 4" EXTERIOR PRE-FAB METAL WALL

EXISTING DOOR SCHEDULE

DOOR NO	QAN	SIZE	MATERIAL	HARDWARE
D01 EXIST.	2	3'X7'	HOLLOW METAL	METAL HANDLE - EXT. KEY SYSTEM WITH INSIDE AUTO-CLOSER
D02 EXIST.	4	3'X6'-8"	HOLLOW METAL	COMMERCIAL LEVER
D03 EXIST.	1	2'-0"X6'-8"	HOLLOW WOOD	COMMERCIAL LEVER
D04 EXIST.	1	2'-0"X6'-0"	HOLLOW WOOD	COMMERCIAL LEVER W/ LOCK SYSTEM
D05 EXIST.	3	3'X6'-8"	HOLLOW WOOD	COMMERCIAL LEVER ADA LOCK SYSTEM AUTO-CLOSER W/ SELF-CLOSING SPRING
D06 EXIST.	2	3'X6'-8"	HOLLOW WOOD	COMMERCIAL LEVER
D07 EXIST.	31	10'X10"	METAL ROLL UP	ROLLING UP DOOR LOCK SYSTEM



OLD KINGS RD

OLD KINGS RD

KEY PLAN FOR 3058 OLD KINGS RD
1/16" = 1'