

± 35,000 -
200,000 SF
DRY STORAGE

10210 IDAHO AVE
HANFORD, CA

FOR LEASE

42

46

47

11

10th Ave

Energy St

Idaho Ave

Idaho Ave

PROPERTY HIGHLIGHTS

- 35,000 SF +/- PER BUILDING
- BLDGS. 11, 42, 46, AND 47 CURRENTLY AVAILABLE
- DRY STORAGE WAREHOUSE SPACE
- POWER AVAILABLE IN EACH BUILDING
- TWO 16' WIDE X 13'6" CLEAR DRIVE-IN DOORS PER BUILDING
- ON-SITE TRUCK SCALE AVAILABLE
- ADDITIONAL OUTDOOR STORAGE AVAILABLE
- FLEXIBLE MULTI-BUILDING LEASING OPTIONS
- SUITABLE FOR WAREHOUSE & STORAGE USES
- RAIL SPUR

CHAD BROCK
cbrock@lee-associates.com
D 661.205.8011
CalDRE: #01454494

ERIC POWERS
epowers@lee-associates.com
D 661.201.0320
CalDRE: #00977873

ROSS PUSKARICH
rpuskarich@lee-associates.com
D 661.889.6580
CalDRE: #02175945

LEE & ASSOCIATES
COMMERCIAL REAL ESTATE SERVICES
CENTRAL CALIFORNIA

All information furnished regarding property for sale, rental or financing is from sources deemed reliable, but no warranty or representation is made to the accuracy thereof and same is submitted to errors, omissions, change of price, rental or other conditions prior to sale, lease or financing or withdrawal without notice. No liability of any kind is to be imposed on the broker herein.

10210 IDAHO AVE | FOR LEASE

PROPERTY OVERVIEW

Hanford Dry Storage is a 1.7 million SF +/- industrial property consisting of 48 buildings with approximately 35,000 SF +/- per building available for dry storage use. Each building is equipped with power and features two drive-in doors measuring 16' wide x 13'6" clear. Tenants may also have the ability to utilize the on-site truck scale, subject to negotiated lease terms. Additional outdoor storage areas may be available at an additional rental rate, creating flexibility for users requiring expanded storage or trailer parking.

LEASE RATE:

\$0.55

AVAILABLE SF

±35,000 - 200,000 SF

LEASE TYPE:

Industrial Gross

TOTAL FACILITY SIZE:

±1.7M SF | ±152 AC

ZONING:

Industrial

APN

018-242-024



WATER
City



ELECTRIC
SoCal Edison



GAS
SoCal Edison



SEWER
City



CHAD BROCK

cbrock@lee-associates.com
D 661.205.8011
CalDRE: #01454494

ERIC POWERS

epowers@lee-associates.com
D 661.201.0320
CalDRE: #00977873

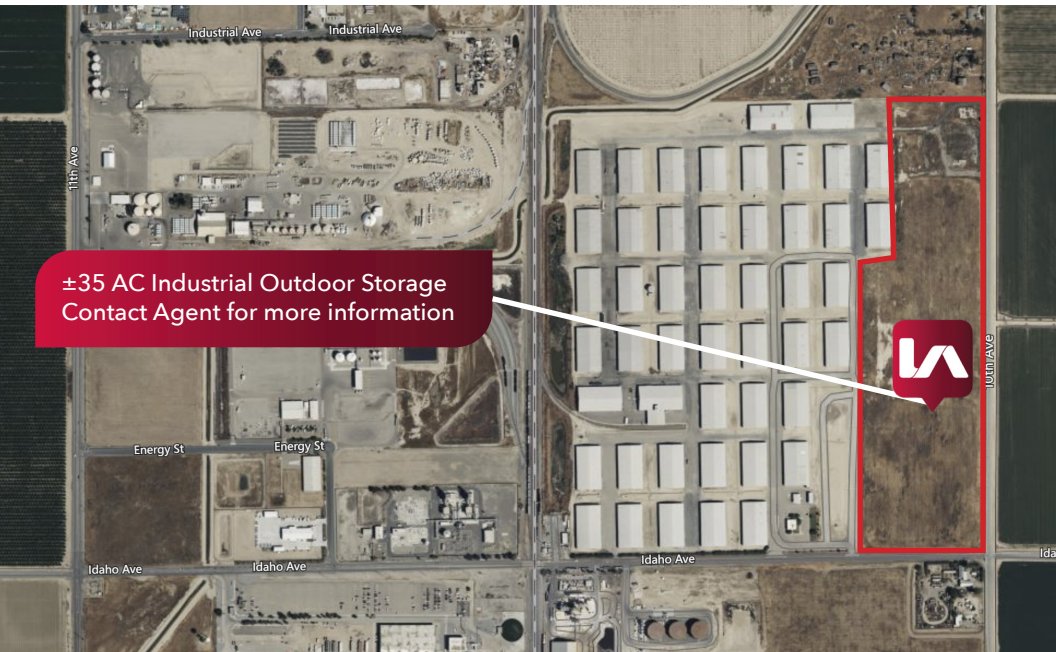
ROSS PUSKARICH

rpuskarich@lee-associates.com
D 661.889.6580
CalDRE: #02175945



All information furnished regarding property for sale, rental or financing is from sources deemed reliable, but no warranty or representation is made to the accuracy thereof and same is submitted to errors, omissions, change of price, rental or other conditions prior to sale, lease or financing or withdrawal without notice. No liability of any kind is to be imposed on the broker herein.

EXTERIOR PROPERTY IMAGES



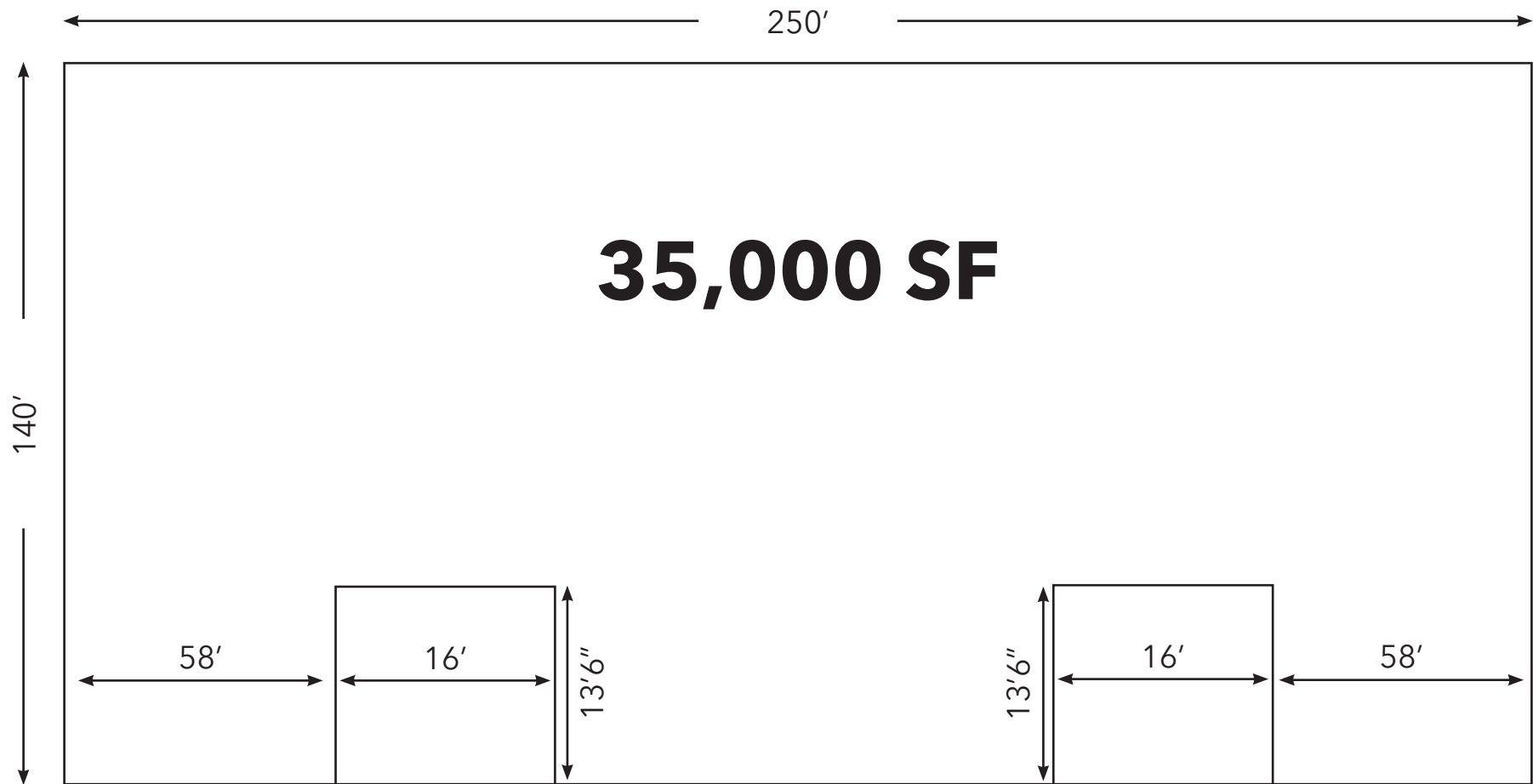
All information furnished regarding property for sale, rental or financing is from sources deemed reliable, but no warranty or representation is made to the accuracy thereof and same is submitted to errors, omissions, change of price, rental or other conditions prior to sale, lease or financing or withdrawal without notice. No liability of any kind is to be imposed on the broker herein.

INTERIOR PROPERTY IMAGES



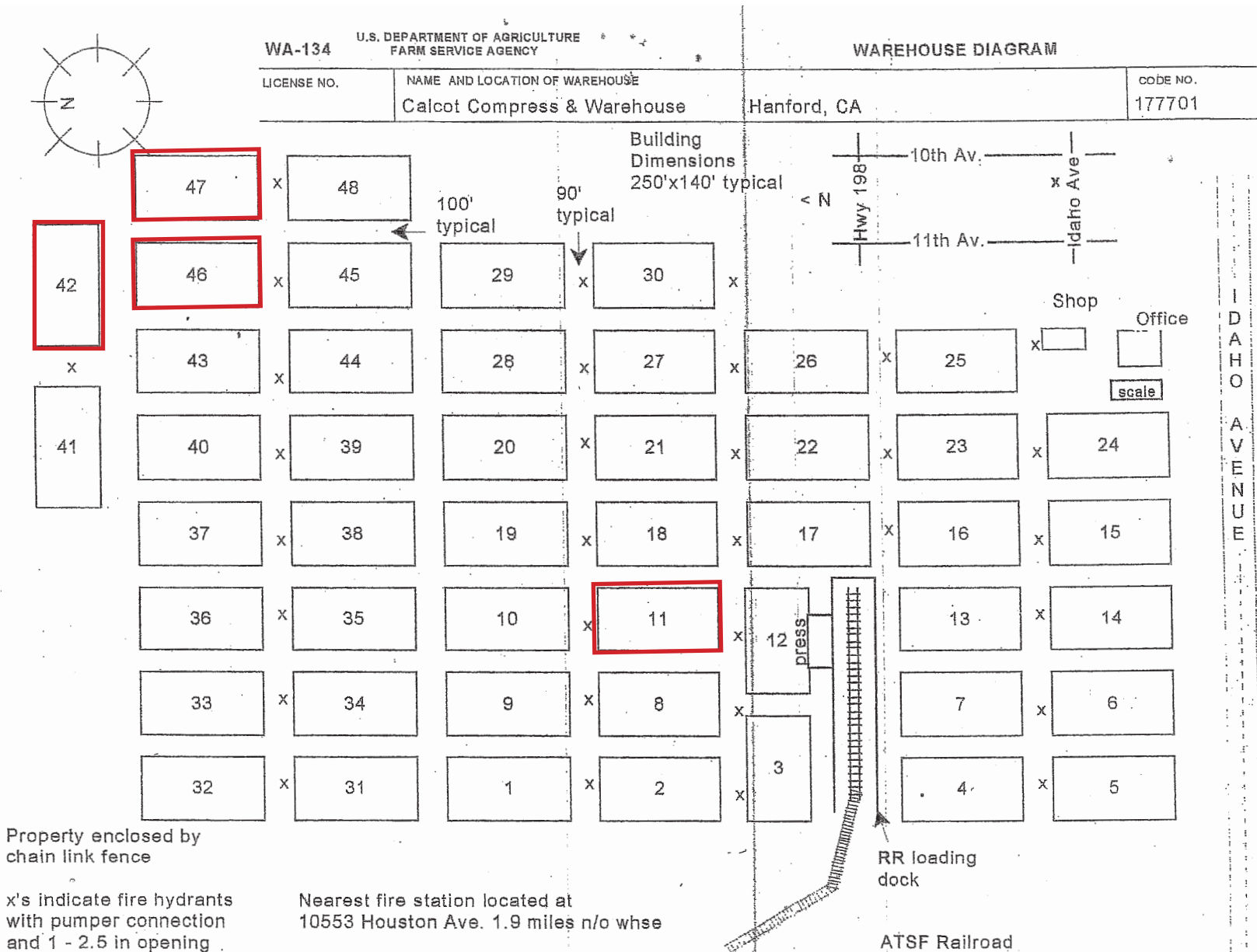
All information furnished regarding property for sale, rental or financing is from sources deemed reliable, but no warranty or representation is made to the accuracy thereof and same is submitted to errors, omissions, change of price, rental or other conditions prior to sale, lease or financing or withdrawal without notice. No liability of any kind is to be imposed on the broker herein.

BUILDING FLOOR PLAN AND DIMENSIONS



All information furnished regarding property for sale, rental or financing is from sources deemed reliable, but no warranty or representation is made to the accuracy thereof and same is submitted to errors, omissions, change of price, rental or other conditions prior to sale, lease or financing or withdrawal without notice. No liability of any kind is to be imposed on the broker herein.

WAREHOUSE MAP



All information furnished regarding property for sale, rental or financing is from sources deemed reliable, but no warranty or representation is made to the accuracy thereof and same is submitted to errors, omissions, change of price, rental or other conditions prior to sale, lease or financing or withdrawal without notice. No liability of any kind is to be imposed on the broker herein.



COMMERCIAL REAL ESTATE SERVICES

LOCAL EXPERTISE. INTERNATIONAL REACH. WORLD CLASS.

Lee & Associates, the largest broker-owned firm in North America, has been providing seamless, consistent execution and value-driven market-to-market services for our clients since 1979.

Our real estate services are tailored to exceed the needs of our local, national, and international clients by combining the latest technology, resources, and market intelligence with over 40 years of expertise to optimize results.

CHAD BROCK

661.205.8011
cbrock@lee-associates.com
License ID# 01454494

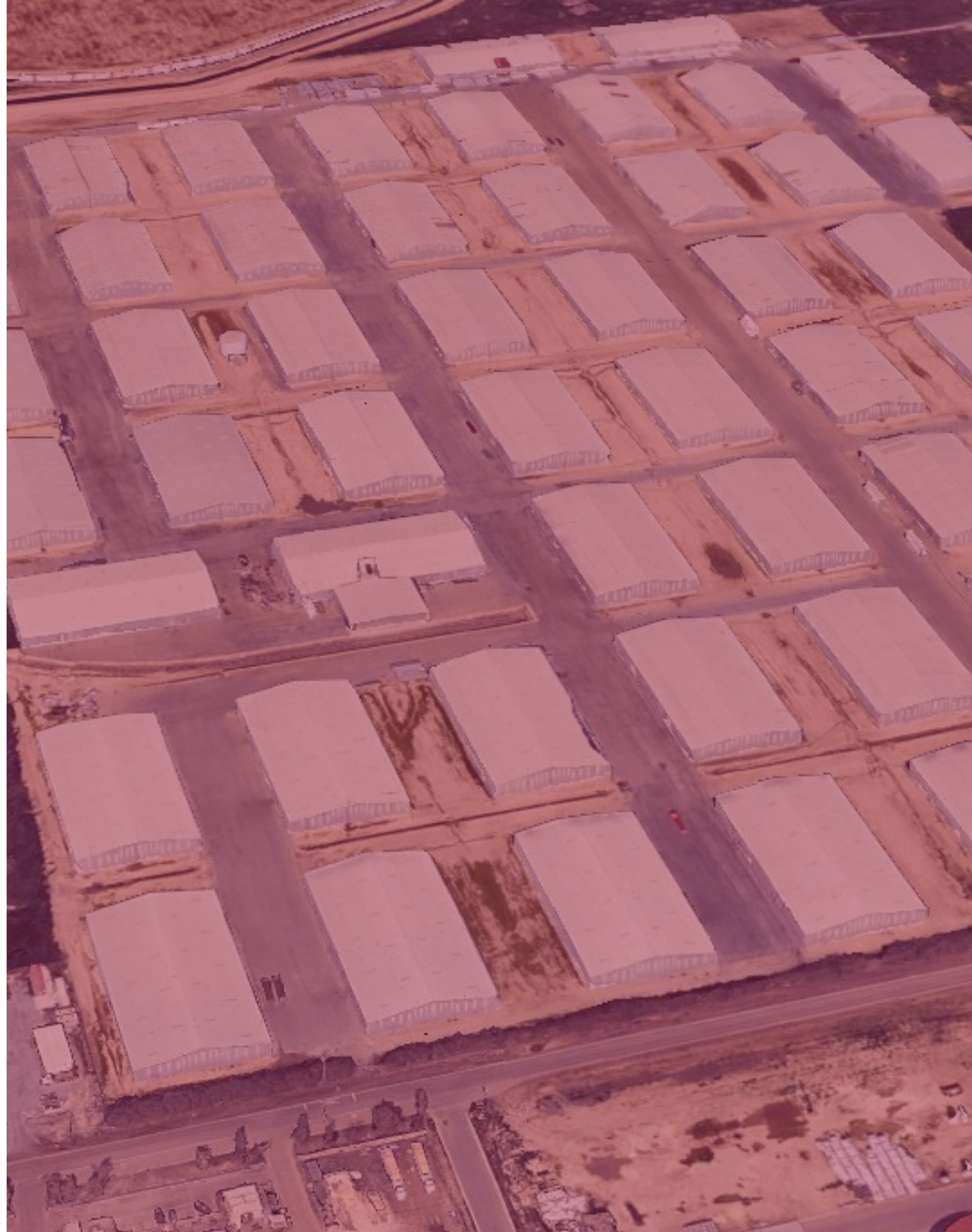
ERIC J. POWERS

661.201.0320
epowers@lee-associates.com
License ID# 00977873

ROSS PUSKARICH

661.889.6580
rpuskarich@lee-associates.com
CalDRE: #02175945

Central California, Inc. -
Lee & Associates
Corporate ID #02215506
A Member of the Lee & Associates
Group of Companies
5401 Business Park South, Suite 122 & 123
Bakersfield, CA 93309



All information furnished regarding property for sale, rental or financing is from sources deemed reliable, but no warranty or representation is made to the accuracy thereof and same is submitted to errors, omissions, change of price, rental or other conditions prior to sale, lease or financing or withdrawal without notice. No liability of any kind is to be imposed on the broker herein.