

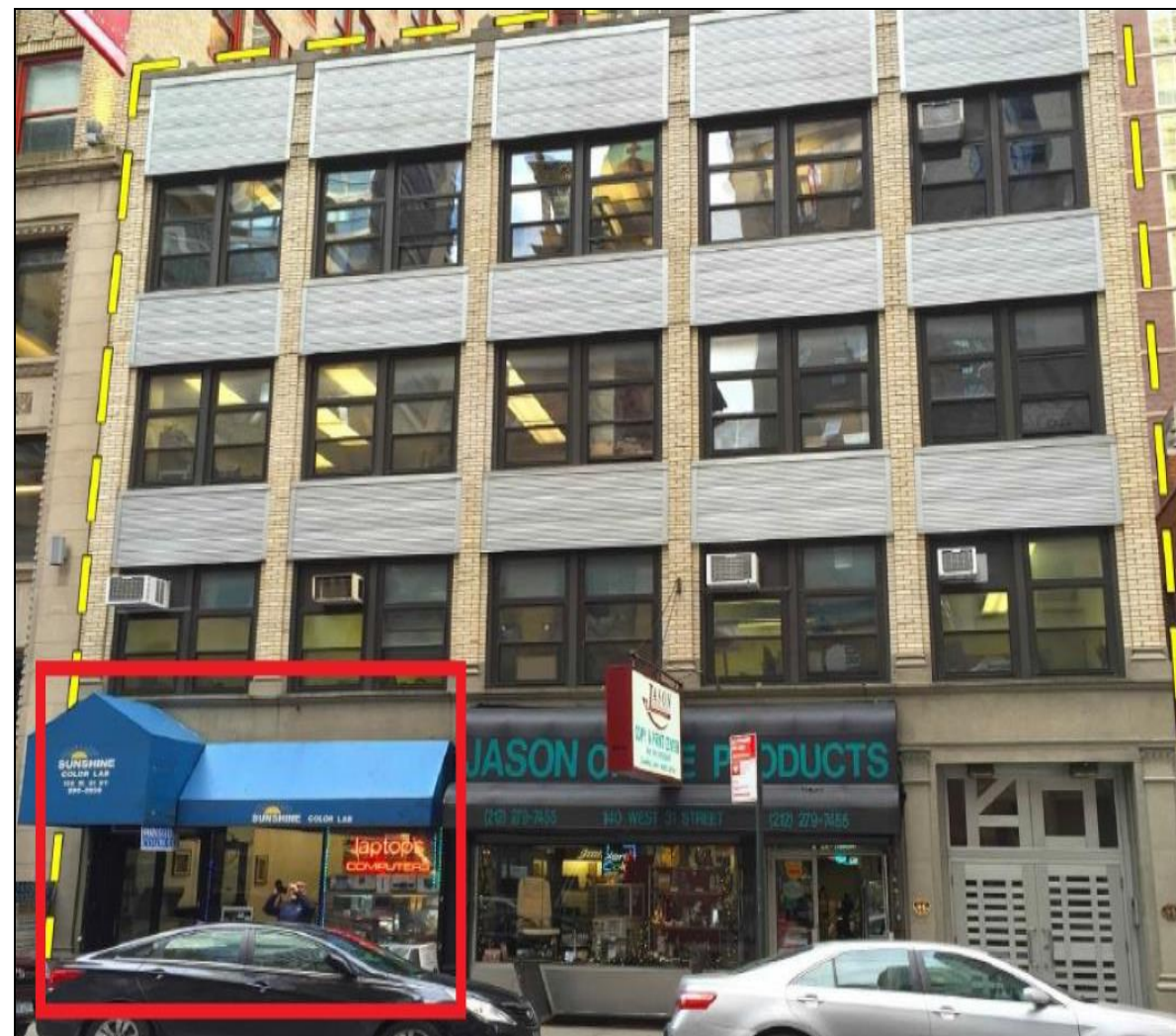
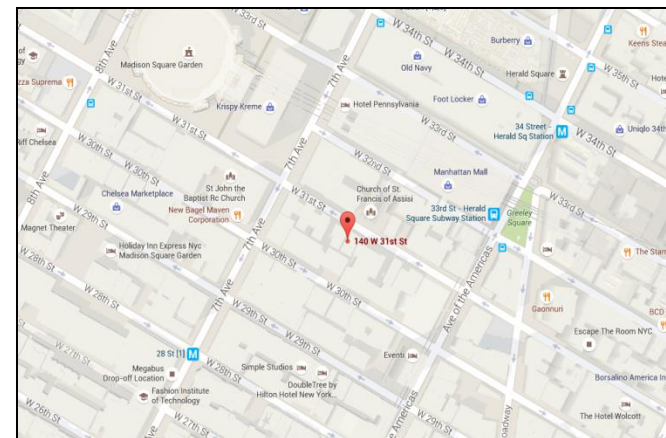


## Between 6<sup>th</sup> Avenue & 7<sup>th</sup> Avenue

Asking Rent	\$19,823/month
Premises	Ground: 1,903 SF Basement: 1,000 SF
Ceiling Heights	12 FT
Term	Long Term
Possession	Immediate

### Comments:

- All uses consider
- With over 170,000 office workers, 17,000 hotel rooms and 29million SF of office space
- Major commercial, retail and entertainment center
- Excess of 4.8 billion and 41,000 residents and growing
- Major Development Area

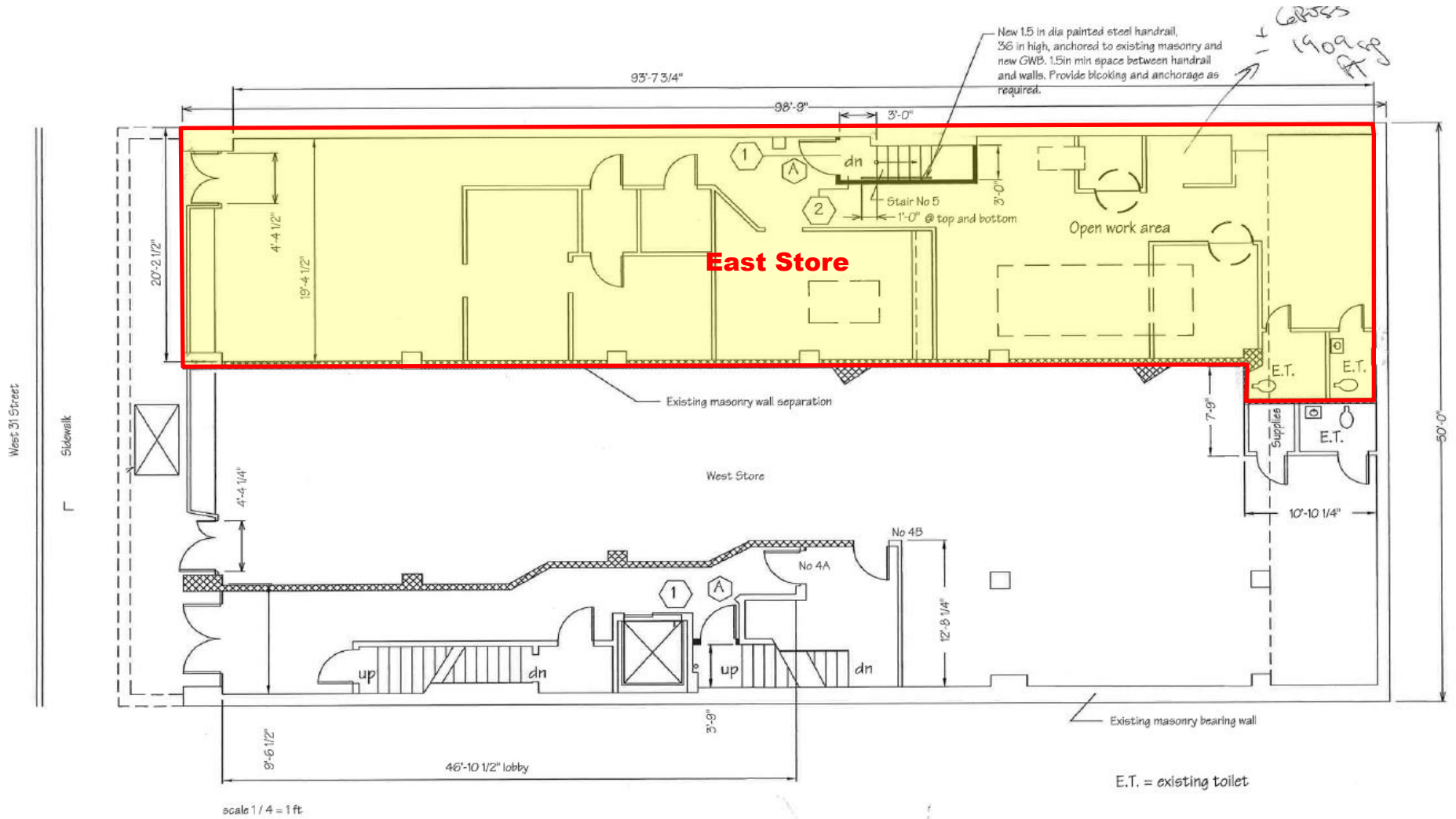


### For more information:

**Dan Shlomo**  
 PD Properties LLC  
 1270 Broadway, Suite 709  
 New York, NY 10001  
 C: 347.977.5999  
 O: 646.843.2766  
 E: [dangzbro@gmail.com](mailto:dangzbro@gmail.com)

**Fenny Li**  
 PD Properties LLC  
 1270 Broadway, Suite 709  
 New York, NY 10001  
 C: 917.572.7775  
 O: 646.843.1763  
 E: [fenny@pdpropertiesnyc.com](mailto:fenny@pdpropertiesnyc.com)

PD PROPERTIES 1270 Broadway, Suite 709, New York, NY 10001 | T 646.843.0992 | F 212.564.3807 | [info@pdpropertiesnyc.com](mailto:info@pdpropertiesnyc.com) | [www.pdpropertiesnyc.com](http://www.pdpropertiesnyc.com)  
 PD PROPERTIES, LLC All information supplied is from sources deemed reliable and is furnished subject to errors, omissions, modifications, removal of the listing from sale or lease, and to any listing conditions, including the rates and manner of payment of commissions for particular offerings imposed by PD Properties, LLC or principals, the terms of which are available to principals or duly licensed brokers. This information may include estimates and projections prepared by PD Properties, LLC with respect to future events, and these future events may or may not actually occur. Such estimates and projections reflect various assumptions concerning anticipated results. While PD Properties, LLC believes these assumptions are reasonable, there can be no assurance that any of these estimates and projections will prove to have been correct. Therefore, actual results may vary materially from these forward-thinking estimates and projections. Any square footage dimensions set forth are approximate. This is not a PD Properties Exclusive.



**For more information:**  
**Dan Shlomo**  
 PD Properties LLC  
 1270 Broadway, Suite 709  
 New York, NY 10001  
 C: 347.977.5999  
 O: 646.843.2766  
 E: [danzbro@gmail.com](mailto:danzbro@gmail.com)

**Fenny Li**  
 PD Properties LLC  
 1270 Broadway, Suite 709  
 New York, NY 10001  
 C: 917.572.7775  
 O: 646.843.1763  
 E: [fenny@pdpropertiesnyc.com](mailto:fenny@pdpropertiesnyc.com)

PD PROPERTIES 1270 Broadway, Suite 709, New York, NY 10001 | T 646.843.0992 | F 212.564.3807 | [info@pdpropertiesnyc.com](mailto:info@pdpropertiesnyc.com) | [www.pdpropertiesnyc.com](http://www.pdpropertiesnyc.com)  
 PD PROPERTIES, LLC All information supplied is from sources deemed reliable and is furnished subject to errors, omissions, modifications, removal of the listing from sale or lease, and to any listing conditions, including the rates and manner of payment of commissions for particular offerings imposed by PD Properties, LLC or principals, the terms of which are available to principals or duly licensed brokers. This information may include estimates and projections prepared by PD Properties, LLC with respect to future events, and these future events may or may not actually occur. Such estimates and projections reflect various assumptions concerning anticipated results. While PD Properties, LLC believes these assumptions are reasonable, there can be no assurance that any of these estimates and projections will prove to have been correct. Therefore, actual results may vary materially from these forward-thinking estimates and projections. Any square footage dimensions set forth are approximate. This is not a PD Properties Exclusive.





## For more information:

**Dan Shlomo**  
PD Properties LLC  
1270 Broadway, Suite 709  
New York, NY 10001  
C: 347.977.5999  
O: 646.843.2766  
E: [danzbro@gmail.com](mailto:danzbro@gmail.com)

**Fenny Li**  
PD Properties LLC  
1270 Broadway, Suite 709  
New York, NY 10001  
C: 917.572.7775  
O: 646.843.1763  
E: [fenny@pdpropertiesnyc.com](mailto:fenny@pdpropertiesnyc.com)

PD PROPERTIES 1270 Broadway, Suite 709, New York, NY 10001 | T 646.843.0992 | F 212.564.3807 | [info@pdpropertiesnyc.com](mailto:info@pdpropertiesnyc.com) | [www.pdpropertiesnyc.com](http://www.pdpropertiesnyc.com)  
PD PROPERTIES, LLC All information supplied is from sources deemed reliable and is furnished subject to errors, omissions, modifications, removal of the listing from sale or lease, and to any listing conditions, including the rates and manner of payment of commissions for particular offerings imposed by PD Properties, LLC or principals, the terms of which are available to principals or duly licensed brokers. This information may include estimates and projections prepared by PD Properties, LLC with respect to future events, and these future events may or may not actually occur. Such estimates and projections reflect various assumptions concerning anticipated results. While PD Properties, LLC believes these assumptions are reasonable, there can be no assurance that any of these estimates and projections will prove to have been correct. Therefore, actual results may vary materially from these forward-thinking estimates and projections. Any square footage dimensions set forth are approximate. This is not a PD Properties Exclusive.