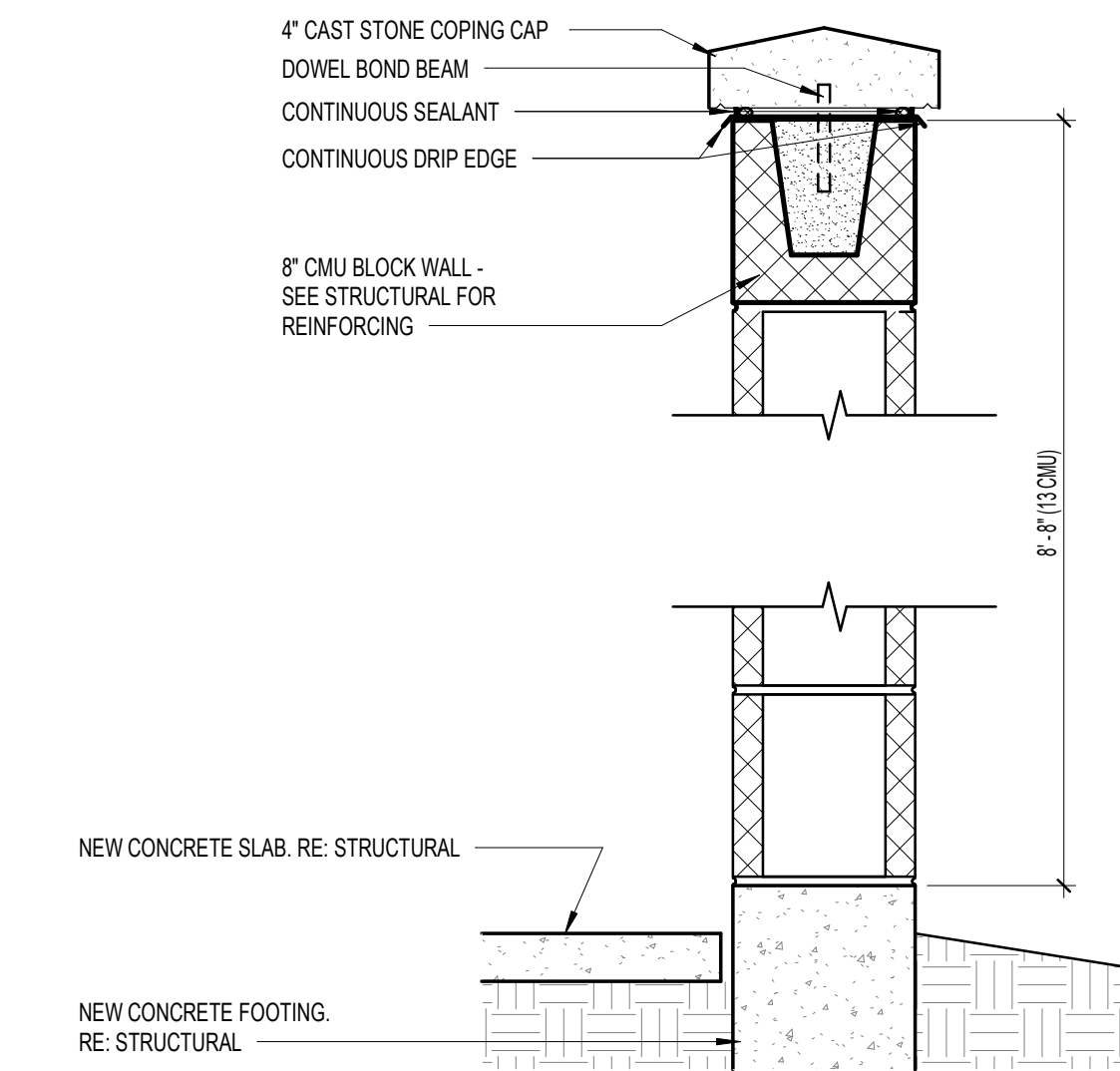
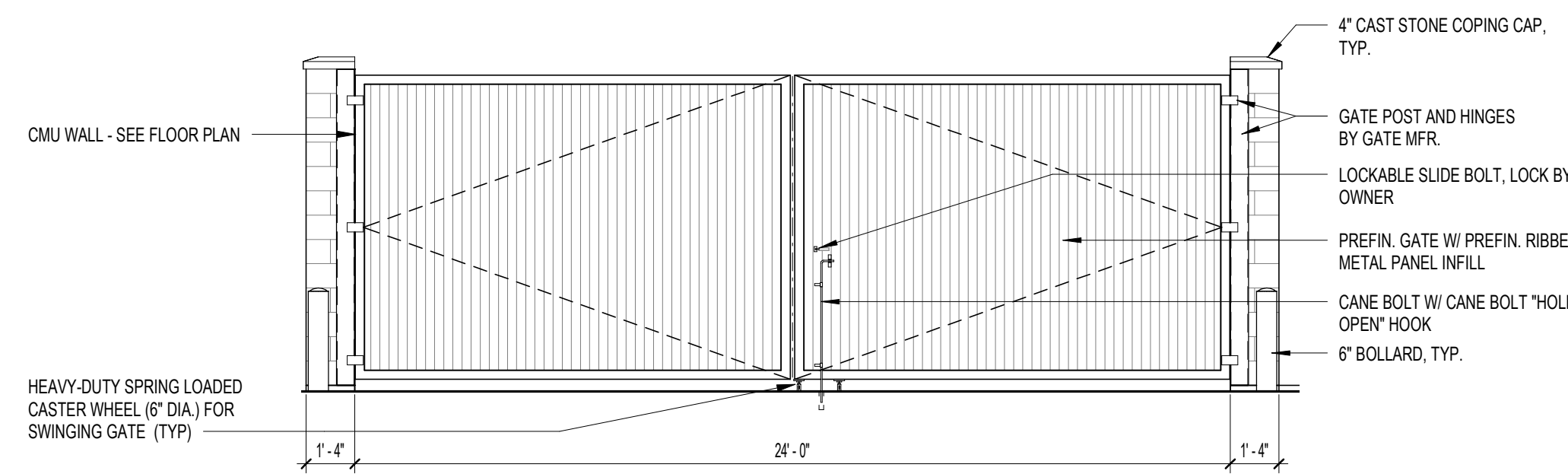


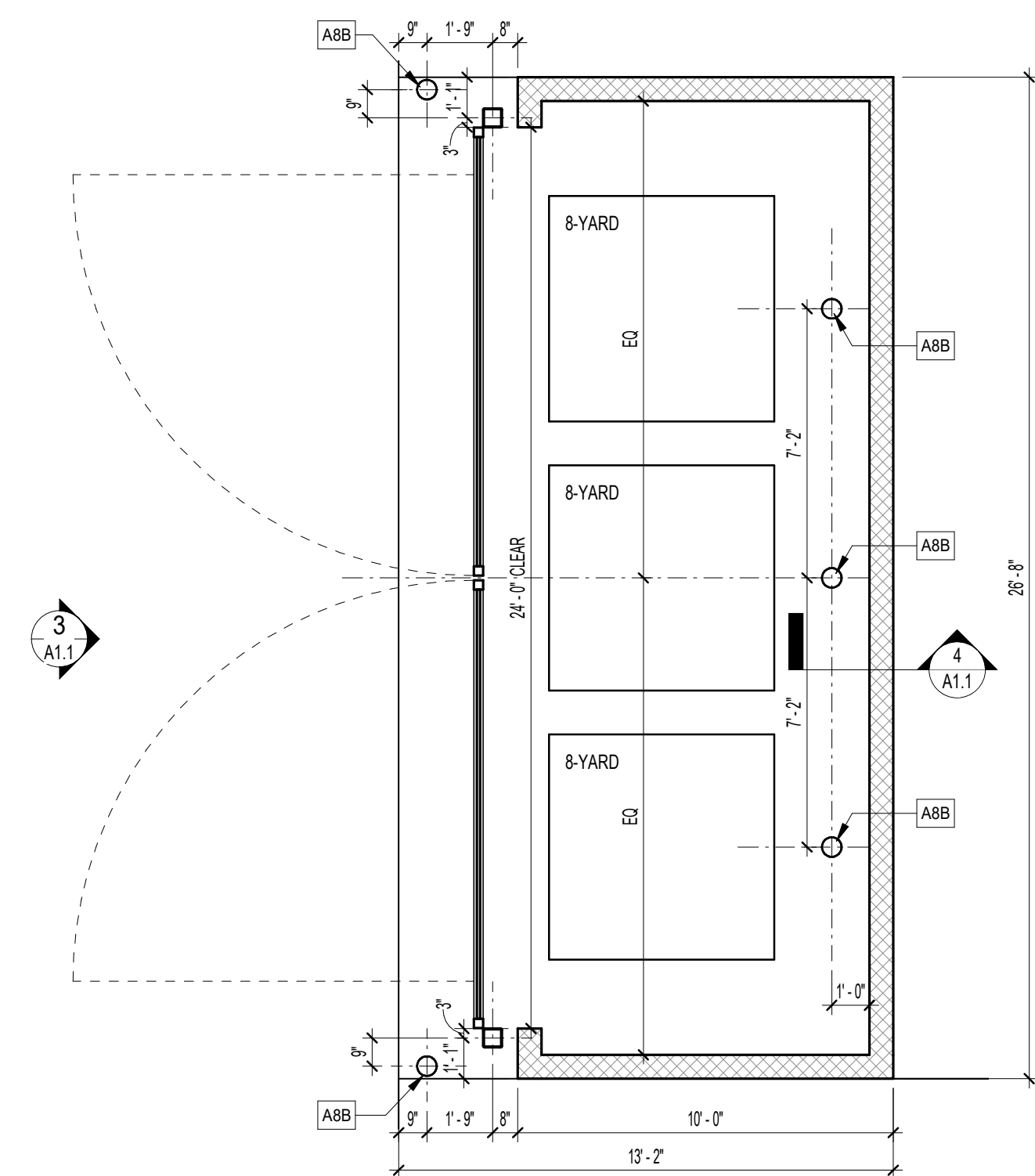
5 GUARDRAIL DETAIL
A1.1 1 1/2" = 1'-0"



4 TRASH ENCLOSURE SECTION DETAIL
A1.1 1 1/2" = 1'-0"



3 TRASH ENCLOSURE ELEVATION
A1.1 1/4" = 1'-0"



2 TRASH ENCLOSURE PLAN
A1.1 1/4" = 1'-0"

#	KEY NOTES
A1	OFFICE ENTRY
A2	CONCRETE SIDEWALK - SEE CIVIL
A3	ACCESSIBLE PARKING
A4	ASPHALT STRIPING - SEE CIVIL
A5	TRASH ENCLOSURE - SEE DETAILS
A6	LOADING DOCK - SEE CIVIL
ATA	GALVANIZED 1 1/2" PIPE STEEL GUARDRAIL - PAINT - SEE DETAIL 5/A1.1
ABB	6" DIA. PROTECTION BOLLARD TO RECEIVE (2) COATS OF ALKYD SEMI-GLOSS "SAFETY YELLOW" PAINT - SEE DETAIL 9/A7.1

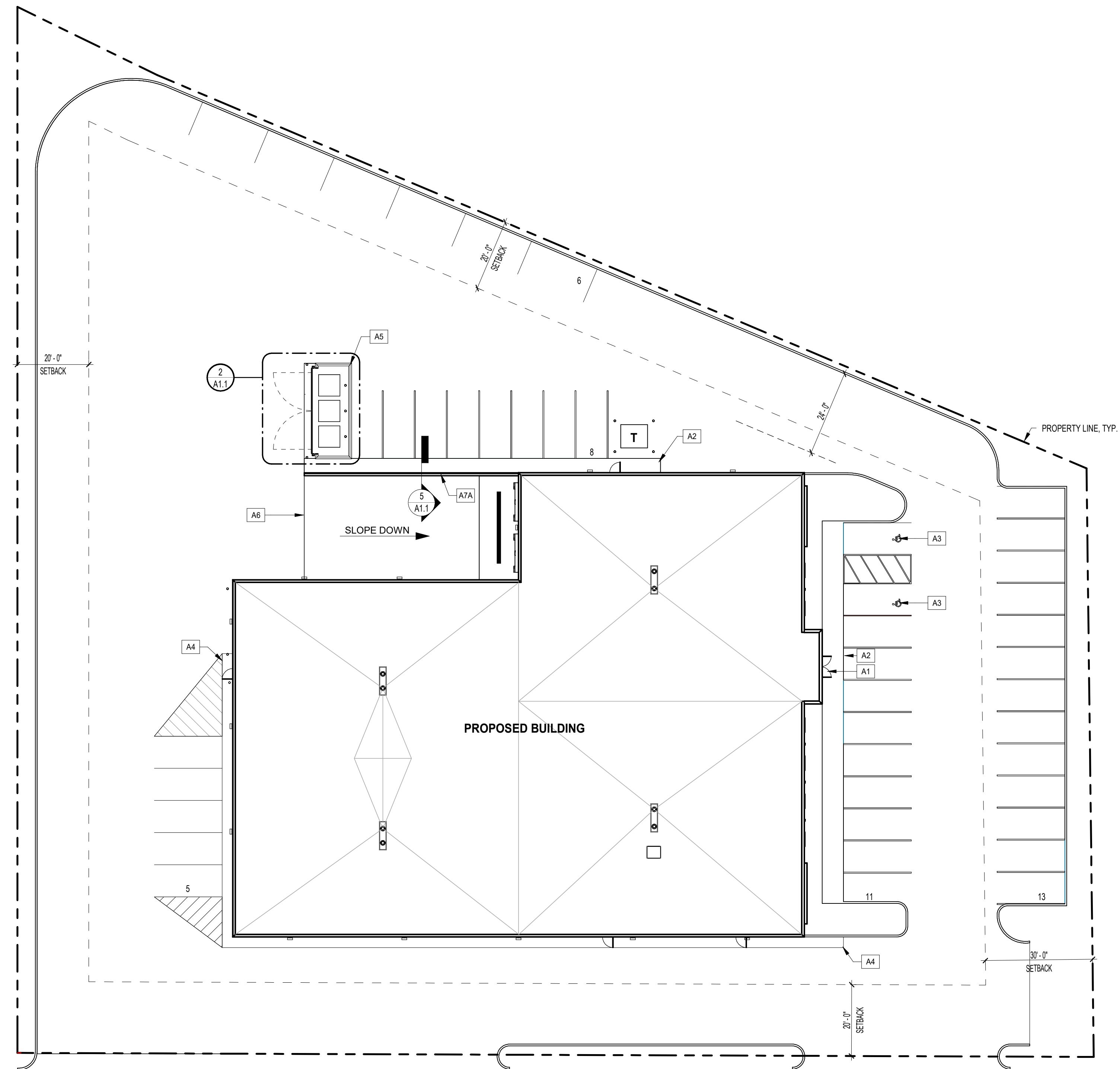
SITE DATA	
LOCATION:	617 N. INDIANA AVENUE CROWN POINT, IN 46307
ZONING:	I-1
PERMITTED USE:	OFFICES, WAREHOUSES, PARKING LOTS
LOT AREA:	1.57 ACRE
IMPERVIOUS AREA:	
OPEN SPACE:	
REQUIRED BUILDING SETBACK:	30' (VARIANCE FOR 10')
- PRINCIPAL FRONT:	20'
- SIDE:	0'
- REAR:	0'
PARKING:	
PROVIDED TOTAL PARKING SPACES:	28
PROVIDED ACCESSIBLE PARKING SPACES:	2

GMA
ARCHITECTS
3113 Woodcreek Drive
Downers Grove, IL 60515
P: 331.251.2726
www.gma-architects.com

STRUCTURAL ENGINEY
1819 W. DELA ROAD
SUITE 100
NAPERVILLE, IL 60563
630.219.1997

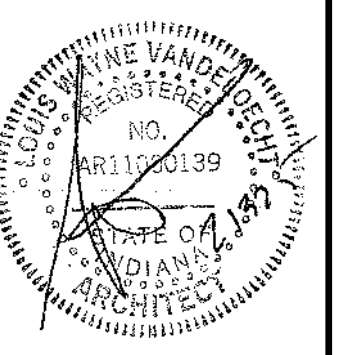
MEPP
CASE ENGINEERING INC.
796 MERUS COURT
ST. LOUIS, MO 63026
636.348.1600

CIVIL
DIV TEAM, INC.
1155 PROUDING ROAD
CROWN POINT, IN 46307
219.862.7710



1 ARCHITECTURAL SITE PLAN
A1.1 1" = 20'-0"

PROJECT
D&L WOOD PRODUCTS, INC.
619 N INDIANA AVE
CROWN POINT, IN 46307



JOB NO: GA1001
PA: GS
ISSUE DATE: 08.18.23

#	REVISIONS:	DESCRIPTION	DATE
1	CONSTRUCTION	04.13.23	
2	PERMIT RESUBMISSION	02.13.25	

THIS DESIGN AND THESE DRAWINGS ARE THE PROPERTY OF GMA ARCHITECTS, INC. NO PART OF THIS DESIGN OR THESE DRAWINGS MAY BE REPRODUCED OR TRANSMITTED IN ANY FORM OR BY ANY MEANS, WITHOUT PRIOR WRITTEN PERMISSION FROM GMA ARCHITECTS, INC.

SHEET NUMBER
A1.1
SITE PLAN & DETAILS