

FOR SALE

240 N Burleson Blvd.
Burleson, TX 76028



- 24,939 SQUARE FOOT BUILDING
- BUILT 2015
- ZONING C - COMMERCIAL
- 2.0 ACRES - 62 PARKING SPOTS
- PREMIUM VISIBILITY WITH 226 FEET OF FREEWAY FRONTAGE
- MAJOR INTERSTATE ON/OFF RAMP NEARBY FOR RENFRO DR
- RARE PROPERTY OFFERING IN THE HEART OF BURLESON'S I-35W CORRIDOR
- 2 FRONT ENTRIES - CAN BE DIVIDED INTO 2 OR MORE TENANTS AS AN INVESTMENT PROPERTY

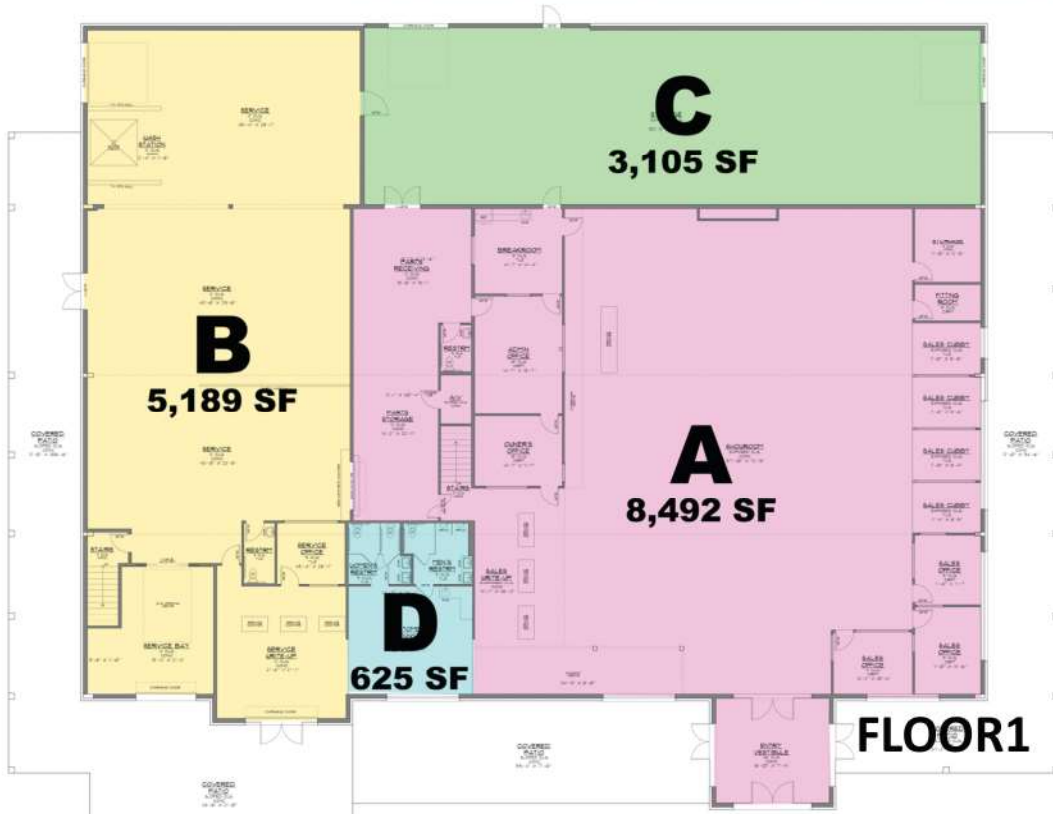
FOR MORE INFORMATION

MARK SMITH
817-386-8201
mark@goridefree.com



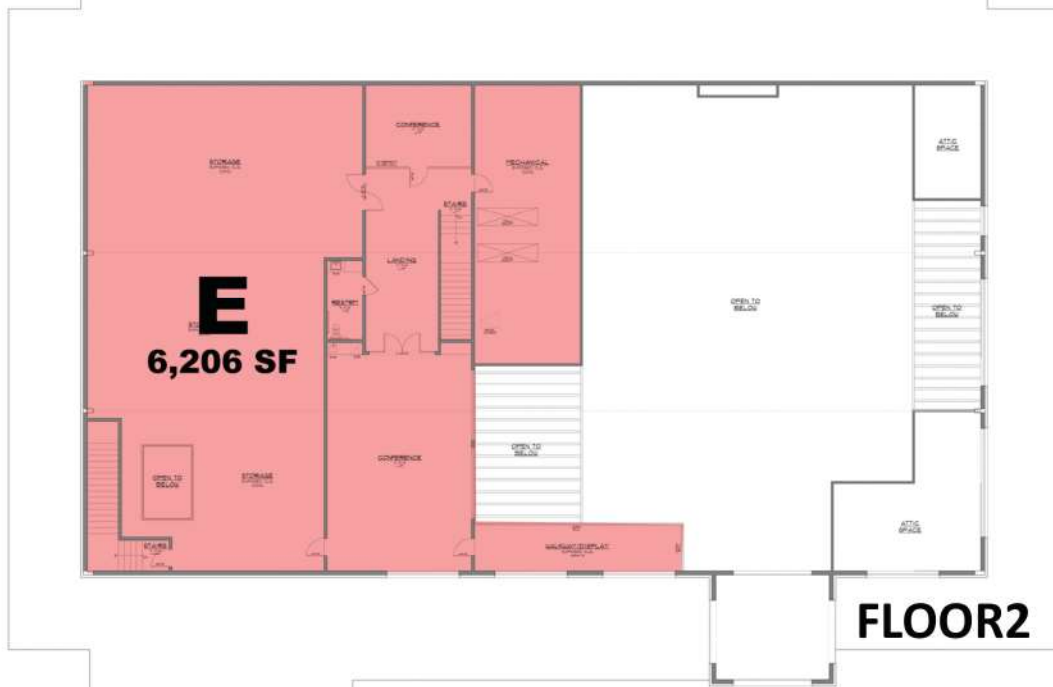
FOR SALE

240 N Burleson Blvd.
Burleson, TX 76028



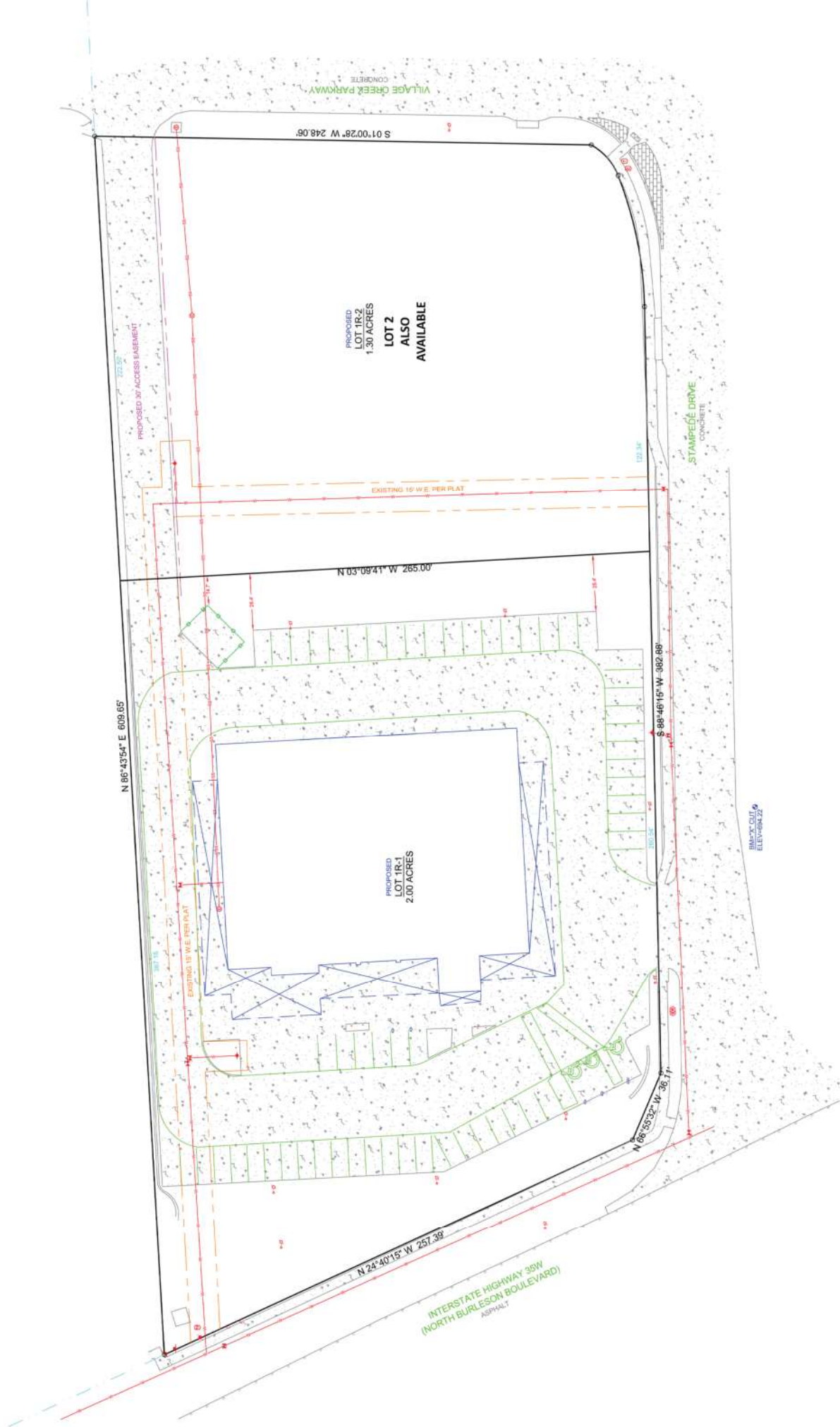
SINGLE TENANT OR MULTIPLE TENANT OPTIONS

1 GROUND FLOOR PLAN



**FOR MORE
INFORMATION**

MARK SMITH
817-386-8201
mark@goridefree.com



PROPOSED
LOT 1R-2
1.30 ACRES
LOT 2
ALSO
AVAILABLE

PROPOSED
LOT 1R-1
2.00 ACRES

N 86°43'54" E 609.65'

S 01°00'28" W 248.08'

N 03°09'41" W 265.00'

N 24°40'15" W 257.39'

S 88°46'15" W 362.68'

N 88°55'32" W 36.77'

PROPOSED 30' ACCESS EASEMENT

EXISTING 15' WE PER PLAT

EXISTING 15' WE PER PLAT

STAMPED DRIVE
CONCRETE

EMERGENCY
ELEVATOR

INTERSTATE HIGHWAY 35W
(NORTH BURLISON BOULEVARD)
ASPHALT

VILLAGE CREEK PARKWAY
CONCRETE