

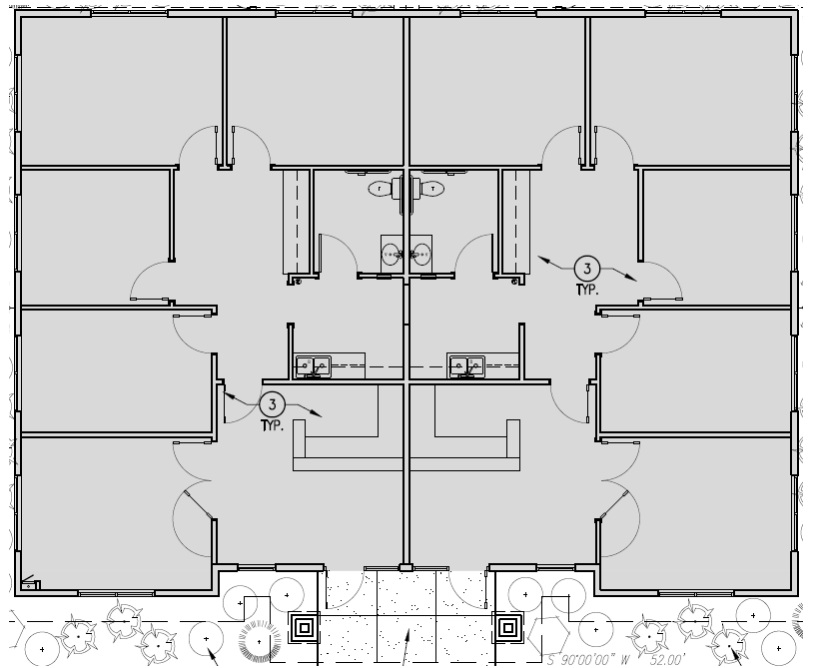
OFFICES FOR LEASE

1901 N. Lakes Pl.
Meridian, ID 83646



Highlights

- Available Space: 1,320 – 2,640 SF
Lease Rate: \$24.50/SF/Year
Lease Type: Modified Gross;
Tenant pays all utilities
- Features: New Construction,
Signalized Intersection,
High-End Finishes,
4 Offices, Reception,
Conference Room



Property Overview

New construction office space located in the heart of Meridian. This duplex is split equally into 2 spaces of 1,320 square feet. Each space contains 4 large private offices, reception area, conference room, breakroom, and bathroom. These spaces can be combined to offer a single tenant the entire 2,640 square foot building. Large windows offer plenty of natural light. This building is located off of a signalized intersection on Fairview between Meridian Rd. and Locust Grove in the well-established Fairview Lakes business park.

Charlie Hoff 208.559.4360 charlieh@hoffc.com

