



**REDUCED RATE FOR TERM THROUGH MAY 1, 2022  
YEAR 1 \$12.00/SF - YEAR 2 \$13.00/SF & REMAINING TERM \$14.00/SF**



# LAKEHARBOR OFFICE SPACE

3649 North Lakeharbor Lane  
Boise, Idaho 83703

2,000 - 4,000 SF

## PROPERTY HIGHLIGHTS

Lease Type	Full Service Excluding Janitorial
Lease Terms	Negotiable, Contact Agents
Zoning	City of Boise-R-2D
Lot Size	0.249 Acres
Space Status	Fully Built-Out Can be Demised
Parking	Shared On-Site Parking
Parcel #	R7254560093
Availability	Immediate
LockBox	No, Contact Agents to Schedule



### JENNIFER MCENTEE

Director  
Office/Investment Specialist  
+1 208 287 9495  
jennifer.mcentee@paccra.com

### DJ THOMPSON

Director  
Office/Investment Specialist  
+1 208 287 8438  
dj.thompson@paccra.com

### BREE WELLS

Senior Associate  
Office Specialist  
+1 208 287 9492  
bree.wells@paccra.com

999 West Main Street, Ste 1300  
Boise, Idaho 83702  
Main +1 208 287 9500  
Fax +1 208 287 9501  
paccra.com

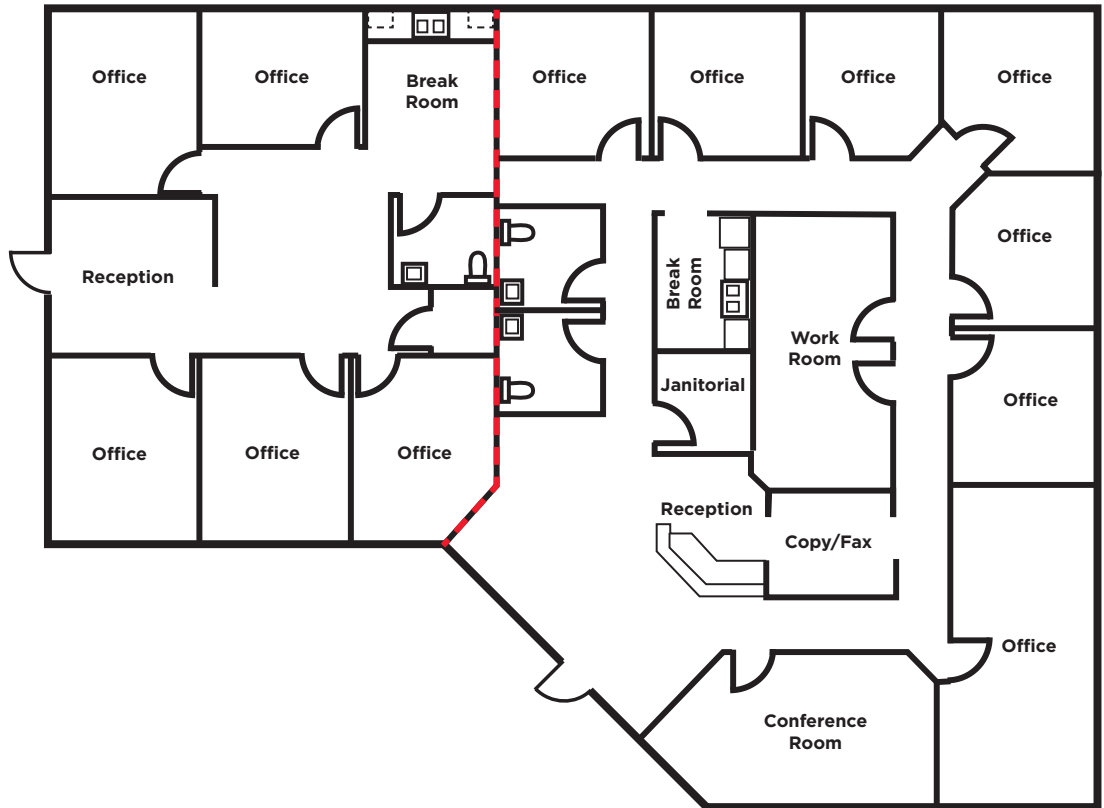
# LAKEHARBOR OFFICE SPACE

3649 North Lakeharbor Lane  
Boise, Idaho 83703

**2,000 - 4,000 SF AVAILABLE**



## FLOOR PLAN & LISTING DETAILS



### Listing Features

- Fully built-out professional office space in the Lakeharbor development off State Street in east Boise
- Available space can be demised into two suites
- Current configuration includes private offices, reception area, conference rooms, workrooms, break rooms, storage areas, three rest rooms and separate entrances
- Surrounded by various retailers, restaurants, financial institutions and other professional services
- Contact agents to discuss various uses and to schedule a walkthrough today!!

**JENNIFER MCENTEE**  
Director  
Office/Investment Specialist  
+1 208 287 9495  
jennifer.mcentee@paccra.com

**DJ THOMPSON**  
Director  
Office/Investment Specialist  
+1 208 287 8438  
dj.thompson@paccra.com

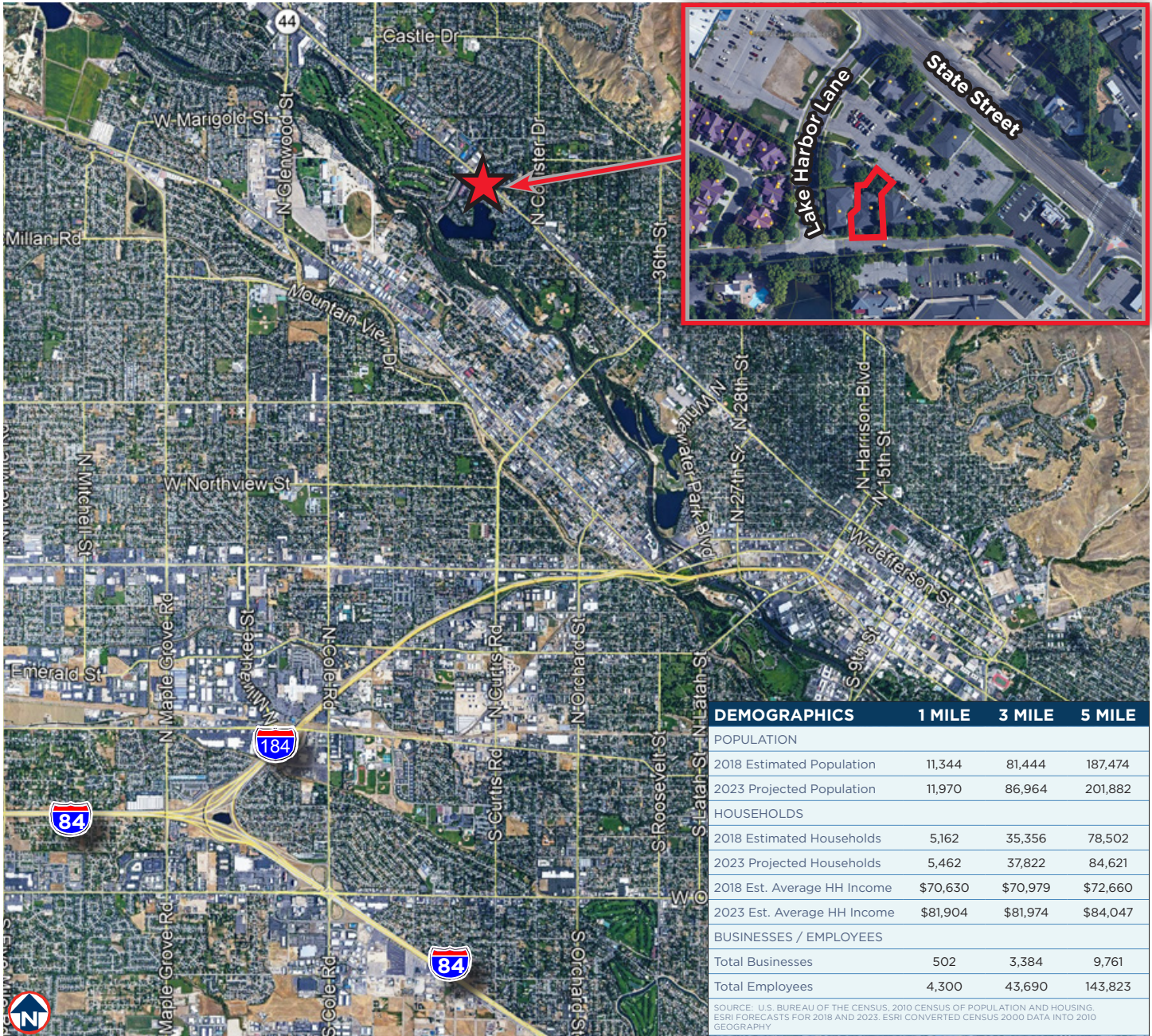
**BREE WELLS**  
Senior Associate  
Office Specialist  
+1 208 287 9492  
bree.wells@paccra.com

999 West Main Street, Ste. 1300  
Boise, Idaho 83702  
Main +1 208 287 9500  
Fax +1 208 287 9501  
**paccra.com**

# LAKEHARBOR OFFICE SPACE

3649 North Lakeharbor Lane  
Boise, Idaho 83703

**2,000 - 4,000 SF AVAILABLE**



**JENNIFER MCENTEE**  
Director  
Office/Investment Specialist  
+1 208 287 9495  
jennifer.mcentee@paccra.com

**DJ THOMPSON**  
Director  
Office/Investment Specialist  
+1 208 287 8438  
dj.thompson@paccra.com

**BREE WELLS**  
Senior Associate  
Office Specialist  
+1 208 287 9492  
bree.wells@paccra.com

999 West Main Street, Ste. 1300  
Boise, Idaho 83702  
Main +1 208 287 9500  
Fax +1 208 287 9501  
**paccra.com**