



PROPERTY INFORMATION

Submarket: Airport
Bldg Size: 3,470 SF
Lot Size: 0.28 Acres
Zoning: L-OD
Parking: 12 + street parking
Lease Term: 3 + Years
Lease Type: NNN
Est. NNN's: \$8.50/SF
Available: Immediately

LISTING COMMENTS

Office building includes several offices and conference spaces, a copier room, 3 restrooms, and breakroom.
 Easy access to Interstate and Vista Ave, as well as downtown Boise.
 Adjacent to Boise Airport, hotels, and restaurants.
 Monument signage and building signage available.
 Multiple access points to property.
 Ample parking.

AVAILABLE SPACE

SPACE:	RSF:	LEASE RATE:
3380 Elder	3,470 SF	\$14.50/SF, NNN

SPACE:	SALE PRICE:
3380 Elder	\$1,023,650 [\$295.00/SF]

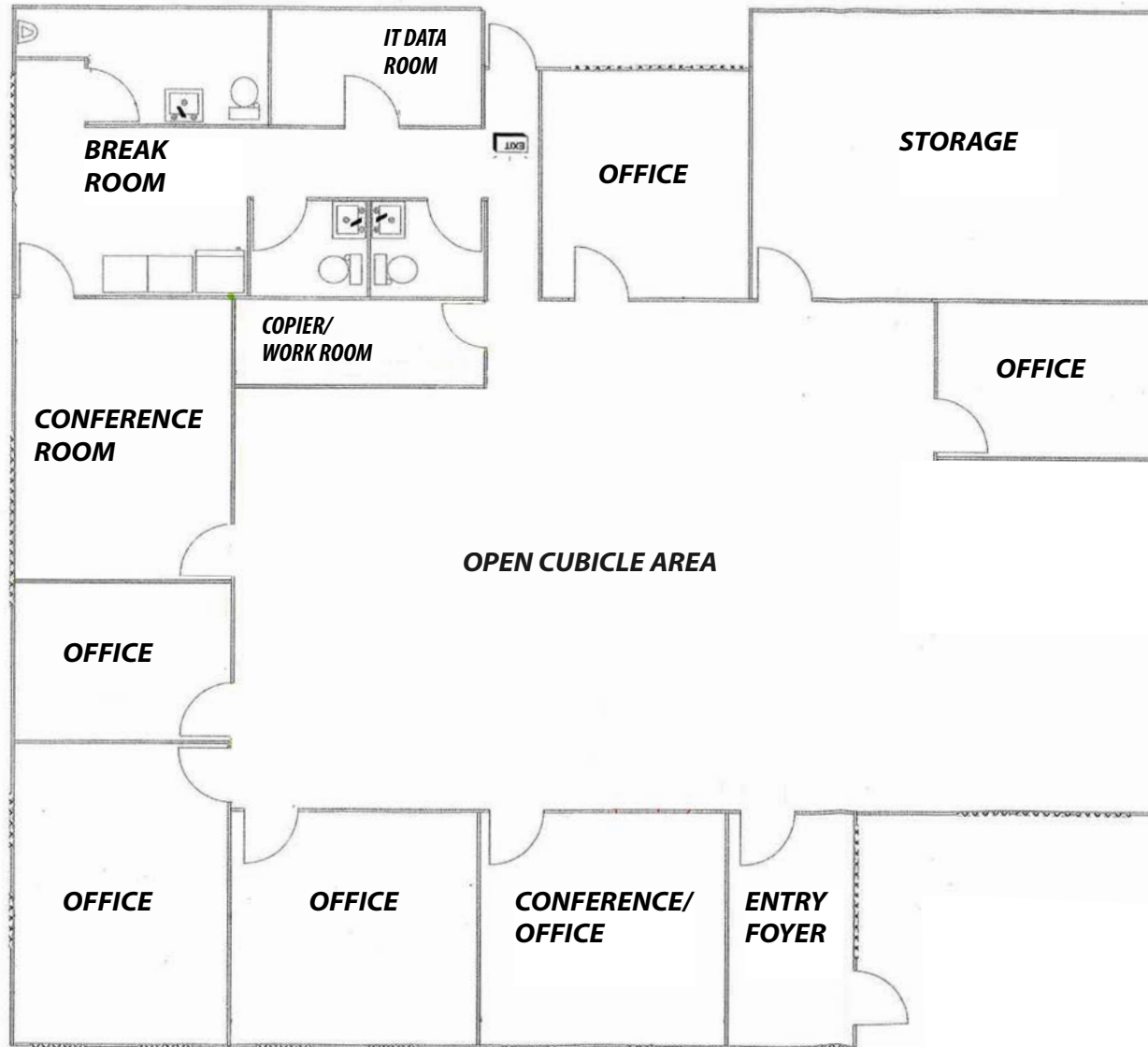
Contact Agent for showing instructions.



OFFICE BUILDING FOR SALE OR LEASE
3380 ELDER STREET
BOISE, ID 83705

COMMERCIAL

FLOOR PLAN
3,470 SF AVAILABLE



OWYHEE ST

ELDER ST

 SITE AERIAL

SITE

INTERSTATE
84

BOISE AIRPORT
4 MINUTES / 0.7 MILES AWAY

EXIT 53

W ELDER ST

S VISTA AVE

EXIT 53