

# come take a walk in..

## the park

at Allens Creek

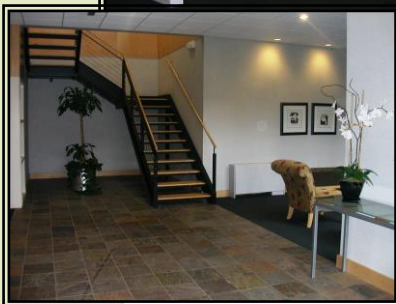


**New Entrance  
Building 110**



**Located on a beautiful 12  
acre campus with Allens  
Creek running through it**

We continuously strive to enhance the comfortable atmosphere for our tenants, from upscale lobby renovations to the installation of architectural thermo-pane windows and ongoing improvements to the landscape.



**Total Renovation  
of Lobbies**

**The Park at Allens Creek  
120 Allens Creek Road  
Rochester, New York 14618**

[www.theparkatallenscreek.com](http://www.theparkatallenscreek.com)

**FOR A PERSONAL TOUR CONTACT HOLLY GARNISH AT (585) 244-0720  
Commercial Property Manager, [holly@theparkatallenscreek.com](mailto:holly@theparkatallenscreek.com)**

# CURRENT SUITES NOW AVAILABLE

Signage throughout The Park  
Welcomes tenants and visitors

## Building 120:

- 730 Sq. Ft. – Quiet professional office with reception area, and 3 private offices/conference room. Available 12/17.
- 1,232 Sq. Ft. – Expandable to 1,476 Sq. Ft. Suite features 5 offices/conference, reception area, open work space, and storage. High quality wiring throughout. Great value for a growing business.

## Building 140:

- 1,235 Sq. Ft. – Premium first floor executive offices with room for reception area, and 3 or 4 private offices/conference room. Available 12/17.
- 3,644 Sq. Ft. – Expandable to 3,950 Sq. Ft. – Large open floor plan with private offices and kitchenette. Suite features wired IT rm. w/ 300 amp circuit.
- 1,822 Sq. Ft. – Professional office suite with 4 windowed offices - one can be used as conference room, 3 interior offices and open area for a work station. Reception area and kitchenette.

## Building 160:

- 1,977 Sq. Ft. – Suite features five offices/meeting room, open work area, file/storage room, and kitchen.
- 864 Sq. Ft. – Quiet, professional suite with offices and a large open room with great view.

The Park at Allens Creek is conveniently situated on Allens Creek Road at the intersection of I-390/I-590 and Monroe Avenue, in the Town of Brighton. It is located minutes from downtown Rochester, the Greater Rochester International Airport and surrounding suburbs.



Sculptural park benches add  
beauty and comfort to The Park.

