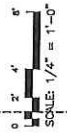
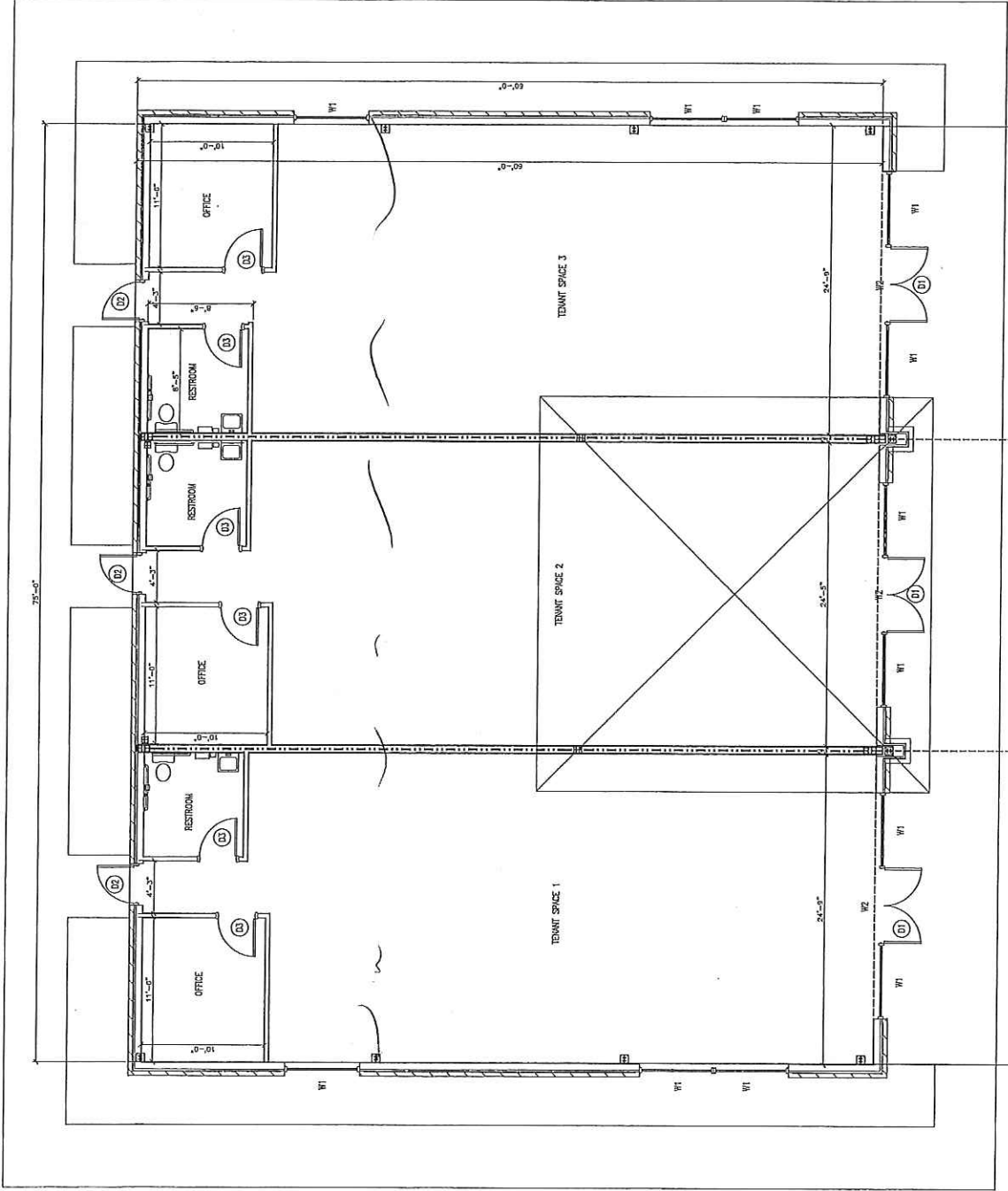


PROJECT: CAMPBELL SQUARE TENANT SPACES  
 SHEET: CAMPBELL AVENUE & GILLESPIE STREET FAYETTEVILLE NC  
 BUILDING FLOOR PLAN

CONTRACTOR/BUILDER: JIM GRAVES & ASSOCIATES, INC.  
 DATE: 22 SEPT 2014  
 CHECKED BY: B. JENKINS  
 DRAWN BY: M.W., KJD  
 REGISTERED BY: B. JENKINS



**B. JENKINS**  
 CONSULTING ENGINEERS, PA  
 OFFICE: 14 BIRNEY STREET, SUITE 200  
 FAYETTEVILLE, NC 28404  
 PHONE: 781-333-1111  
 FAX: 781-333-1112  
 WWW.BJENKINS.COM



1 BUILDING FLOOR PLAN  
 1/4" = 1'-0"