

1038 LOOP 322

Abilene, TX 79601

EXECUTIVE
SUMMARY



OFFERING SUMMARY

Lease Rate: \$90,000 per year
(Ground)

Lot Size: 9.73 Acres

PROPERTY OVERVIEW

Ground lease available off of Loop 322 on the corner of E Stamford and 322. Preferred 12-20 years lease.

PROPERTY HIGHLIGHTS

- Ground Lease
- High Traffic Location
- Highway and I-20 access
- Excellent visibility
- Over 10,000 VPD
- Utilities on/near site.

PAUL A. JOHNSON

325.698.5661

paul@pauljohnsonrealtors.com



1038 LOOP 322

Abilene, TX 79601

ADDITIONAL
PHOTOS



PAUL A. JOHNSON

325.698.5661

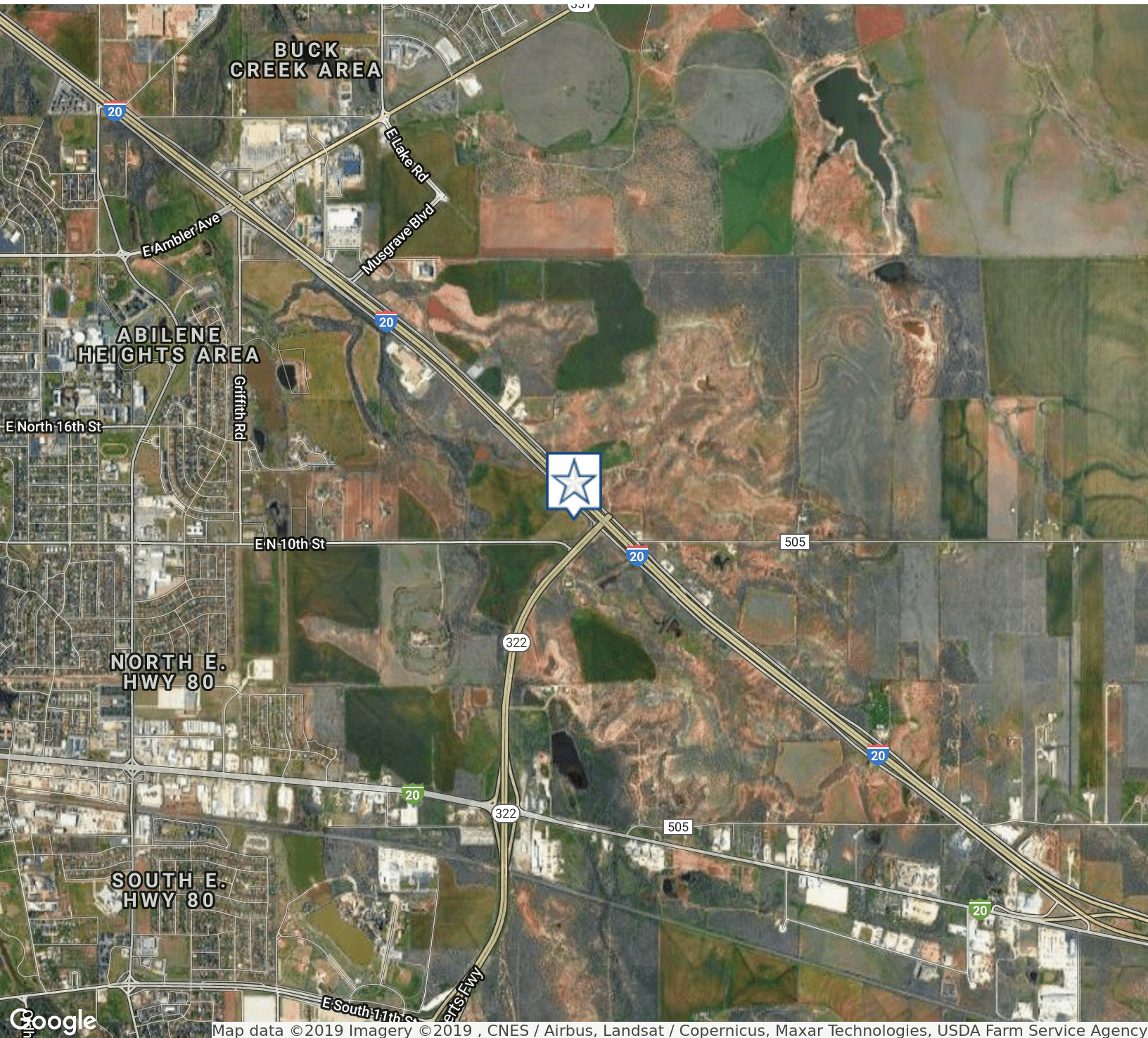
paul@pauljohnsonrealtors.com



1038 LOOP 322

Abilene, TX 79601

LOCATION
MAPS



PAUL A. JOHNSON

325.698.5661

paul@pauljohnsonrealtors.com



4633 South 14th Street | Abilene, TX 79605 | 325.698.5661

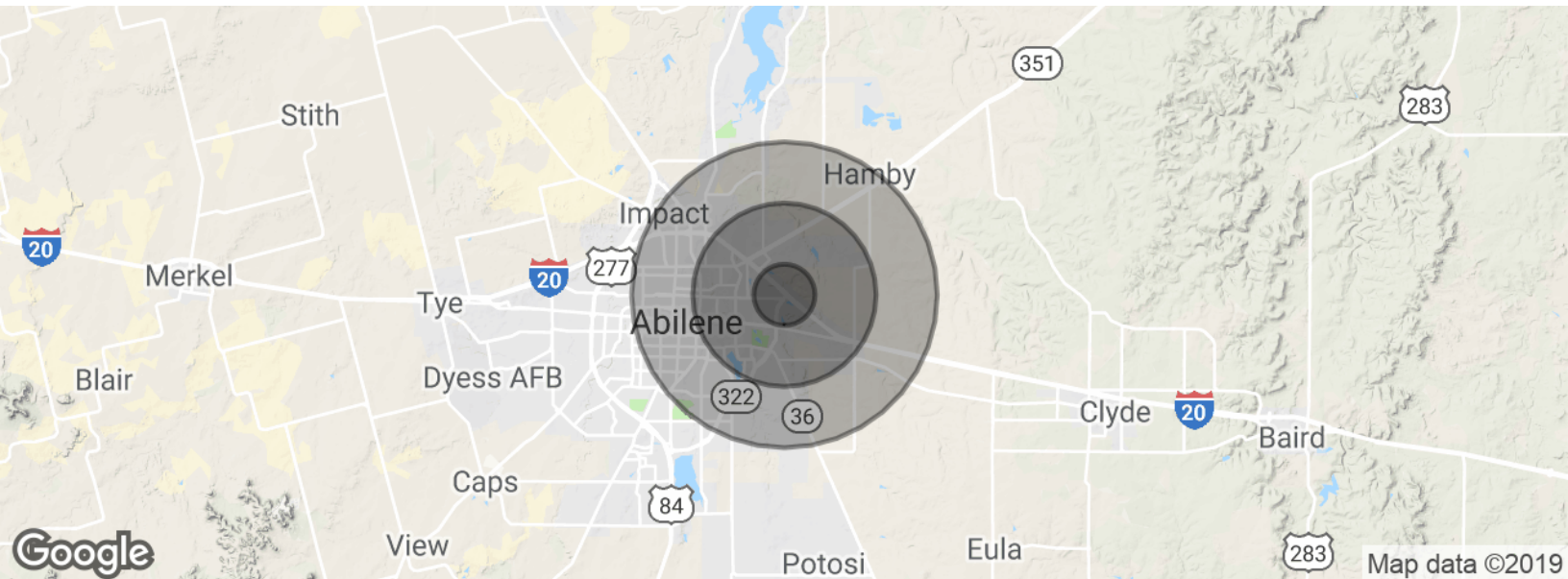
Brokerage makes no representation as to accuracy of all data presented.

PAULJOHNSONREALTORS.COM

1038 LOOP 322

Abilene, TX 79601

DEMOGRAPHICS
MAP & REPORT



POPULATION	1 MILE	3 MILES	5 MILES
Total population	2,045	18,179	53,197
Median age	30.4	28.8	30.4
Median age (Male)	26.8	26.7	29.0
Median age (Female)	35.5	31.4	32.2

HOUSEHOLDS & INCOME	1 MILE	3 MILES	5 MILES
Total households	927	6,700	19,204
# of persons per HH	2.2	2.7	2.8
Average HH income	\$46,565	\$54,321	\$49,177
Average house value	\$187,437	\$155,326	\$115,015

* Demographic data derived from 2010 US Census

PAUL A. JOHNSON

325.698.5661

paul@pauljohnsonrealtors.com

