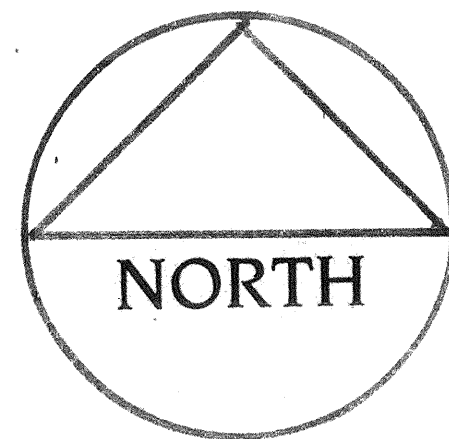
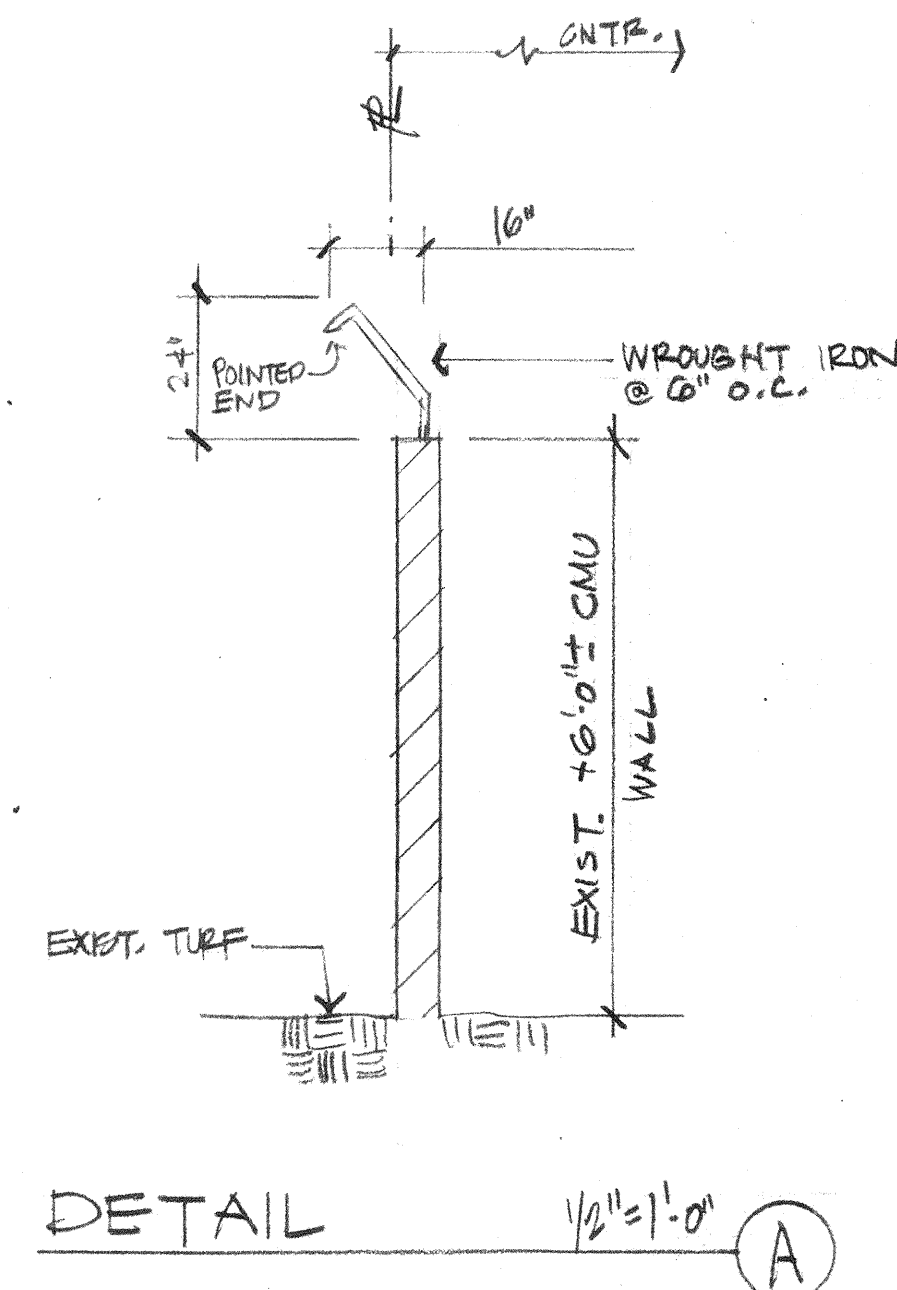
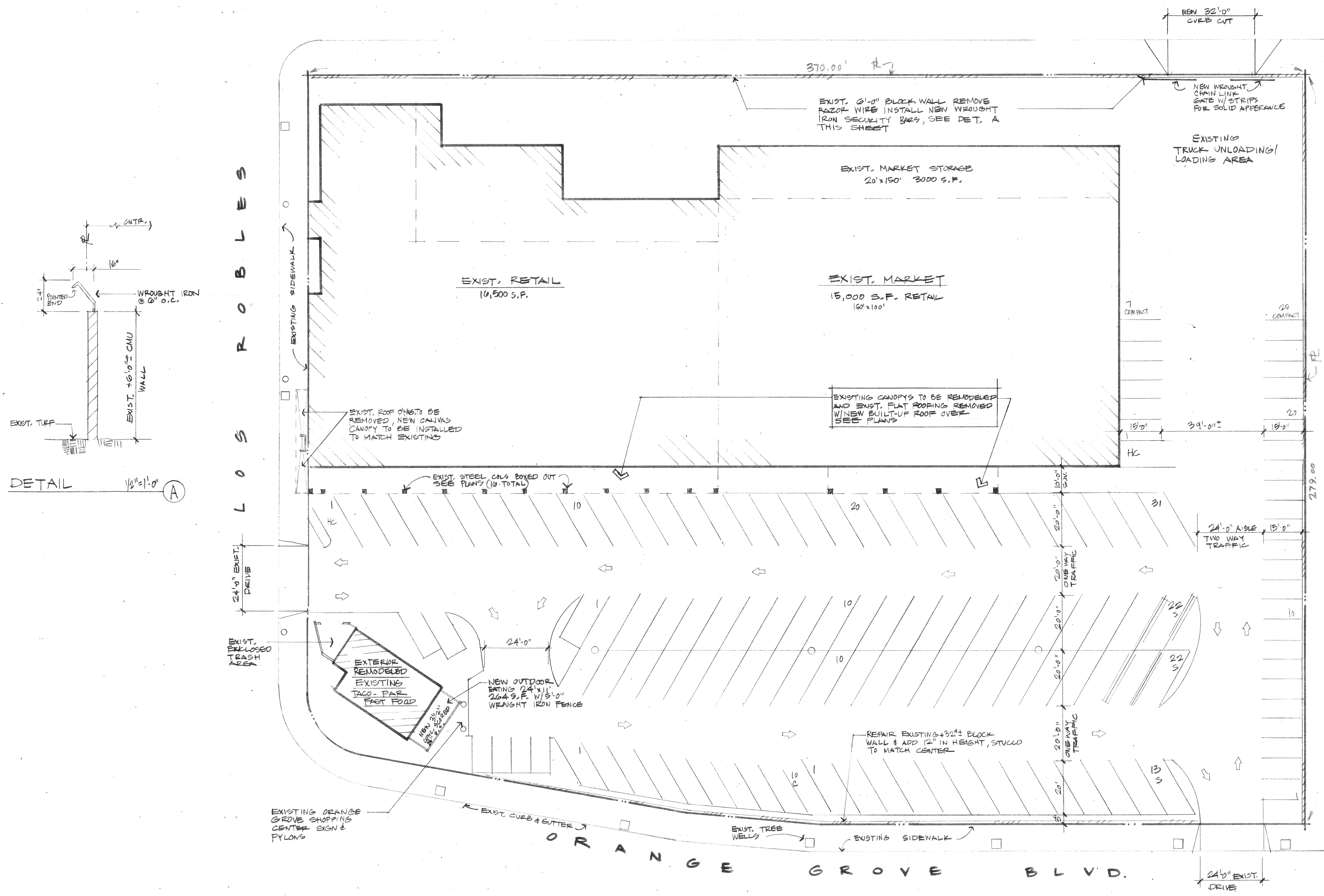


A S H T A B U L A S T R E E T



EXISTING SITE PLAN 1/16" = 1'-0"

REVISIONS	BY

©1997, Eric F. Mossman, Architect expressly reserves its common law copyright and other rights in this drawing. These plans are not to be reproduced, changed or copied in any form or manner whatsoever, without the express written consent of the Architect.

**ERIC F. MOSSMAN**  
Architect  
AIA  
(714) 645-3339  
326 N. NEWPORT BLVD., NEWPORT BEACH, CA 92663

**ORANGE GROVE SHOPPING CENTER**  
Orange Grove Blvd. at Los Robles  
Pasadena, CA  
OWNERS: HUDSON DEVELOPMENT

DRAWN
CHECKED
DATE 7-96
SCALE
JOB NO.
SHEET A1
OF 3 SHEETS