



ATRIUM MEDICAL OFFICE BUILDING

CLASS A MEDICAL SPACE | 502 MADISON OAK DR, SAN ANTONIO , TEXAS

ATRIUM MEDICAL OFFICE

502 Madison Oak Dr. San Antonio, TX 78258


TRANSWESTERN



AVAILABILITY

- Suite 130: 2,607 SF ****Move-in Ready***
- Suite 342: 2,118 SF ****Move-in Ready***
- Suite 343: 1,408 SF ****Shell***
- Suite 344: 4,614 SF ****Move-in Ready***
- Suite 410: 3,878 SF ****Shell***

SPECS

- 5-Story Class A Medical Office
- 132,148 Square Feet
- Garage & Surface Parking
- Generous TI Allowance

BUILDING AMENITIES

- Directly Attached to North Central Baptist Hospital
- New On-Site Cafe Available to Tenants & Guests
- Located Along Stone Oak Parkway Near Loop 1604
- Nearby Retail and Restaurants
- 24-Hour Card Key Access
- On-Site Property Management

FOR LEASING INFORMATION CONTACT:

'LICIA SHREVES ■ 210.253.2931 ■ licia.shreves@transwestern.com

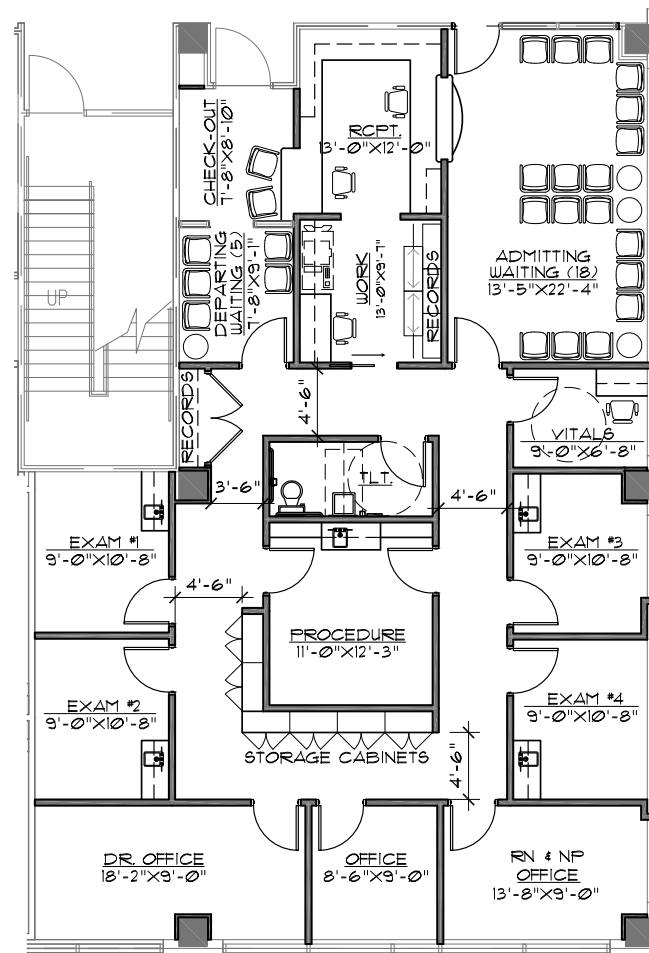
ATRIUM MEDICAL OFFICE

502 Madison Oak Dr. San Antonio, TX 78258



SUITE 130: 2,607 SF

- 2nd Generation Medical Office
- Waiting Room
- Reception Area
- Private Restroom
- Nurse's Station
- Physician's Office
- 4 Exam Rooms
- Storage Room



FOR LEASING INFORMATION CONTACT:

LICIA SHREVES ■ 210.253.2931 ■ licia.shreves@transwestern.com

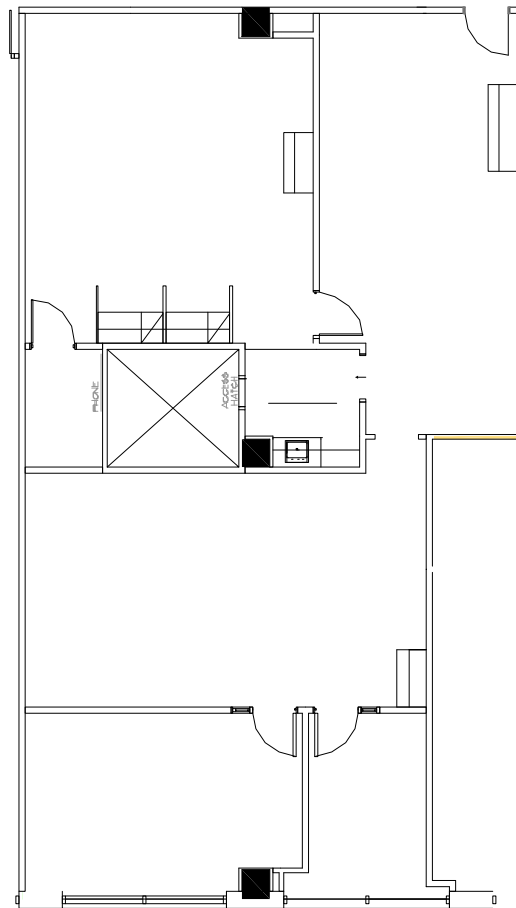
ATRIUM MEDICAL OFFICE

502 Madison Oak Dr. San Antonio, TX 78258



SUITE 342: 2,118 SF

- 2nd Generation Medical Office
- Conference Room
- Break Room
- Storage Room
- Open and Private Office
- Perfect for administrative use



FOR LEASING INFORMATION CONTACT:

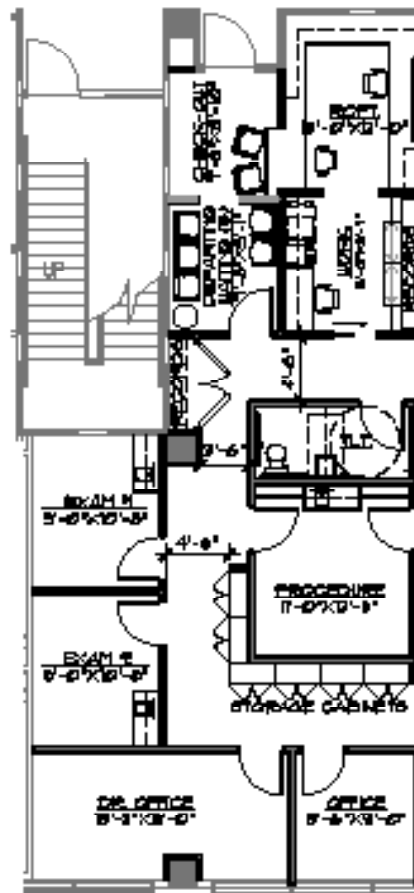
'LICIA SHREVES ■ 210.253.2931 ■ licia.shreves@transwestern.com

ATRIUM MEDICAL OFFICE

502 Madison Oak Dr. San Antonio, TX 78258

SUITE 343: 1,408 SF - *CONCEPTUAL PLAN*

- Generous TI available
- Customized finish out



ATRIUM MEDICAL OFFICE

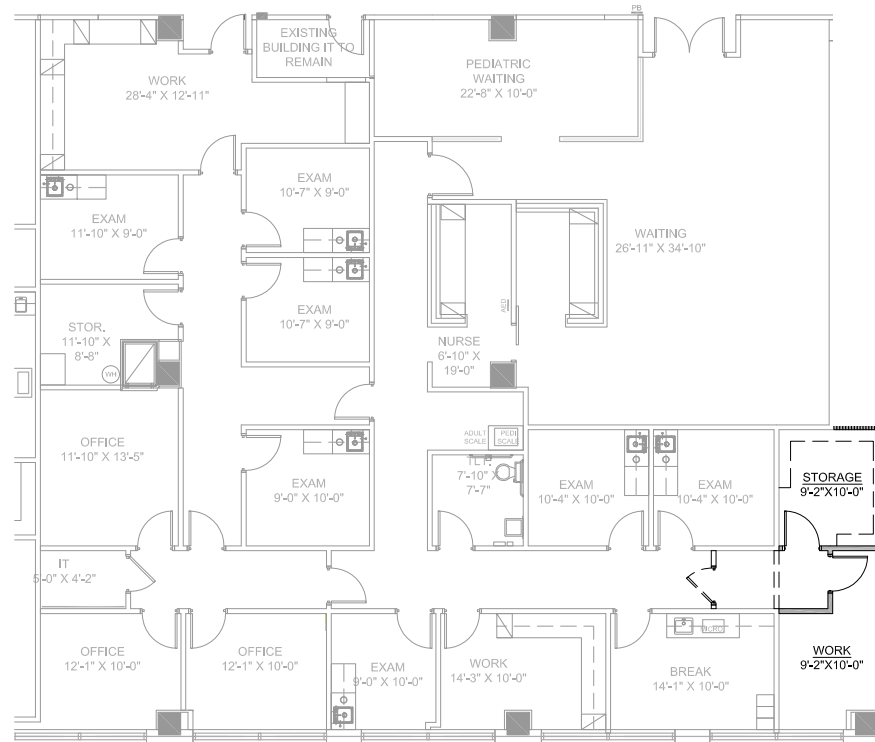
502 Madison Oak Dr. San Antonio, TX 78258

SUITE 344: 4,614 SF

- Move-in Ready
- Waiting Room and Reception Area
- 7 Exam Rooms
- Nurse's Station
- Private Restroom
- 3 Physicians' Offices
- Break Room
- Storage Room
- IT Closet



LINK TO TOUR

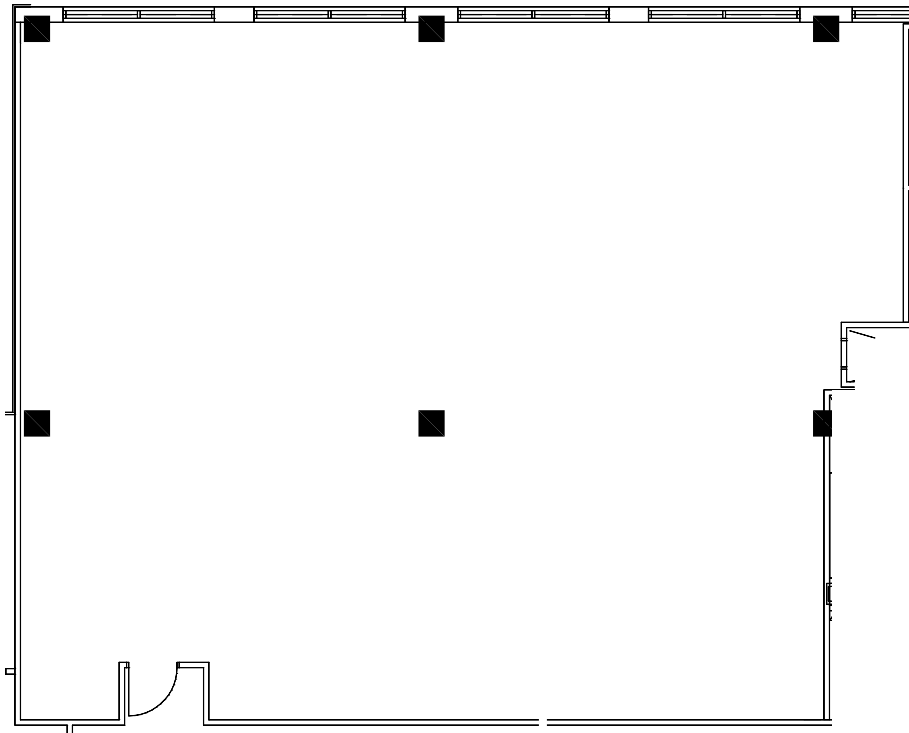


FOR LEASING INFORMATION CONTACT:

'LICIA SHREVES ■ 210.253.2931 ■ licia.shreves@transwestern.com

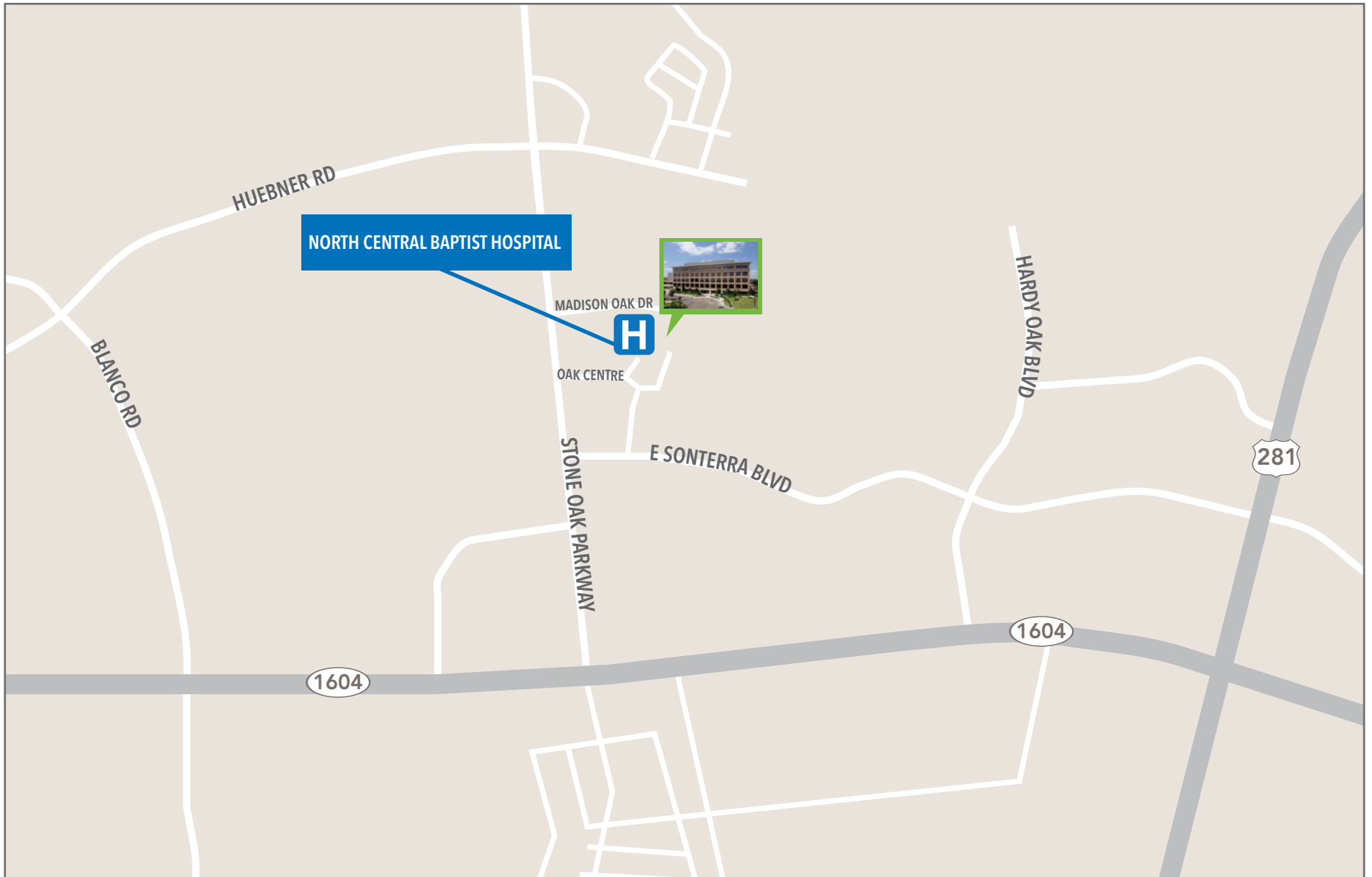
SUITE 410: 3,878 SF

- Generous TI available
- Customized finish out



ATRIUM MEDICAL OFFICE

502 Madison Oak Dr. San Antonio, TX 78258



FOR LEASING INFORMATION CONTACT:

'LICIA SHREVES ■ 210.253.2931 ■ licia.shreves@transwestern.com