

**AVISON  
YOUNG**



**OFFICE SPACE AVAILABLE FOR LEASE**

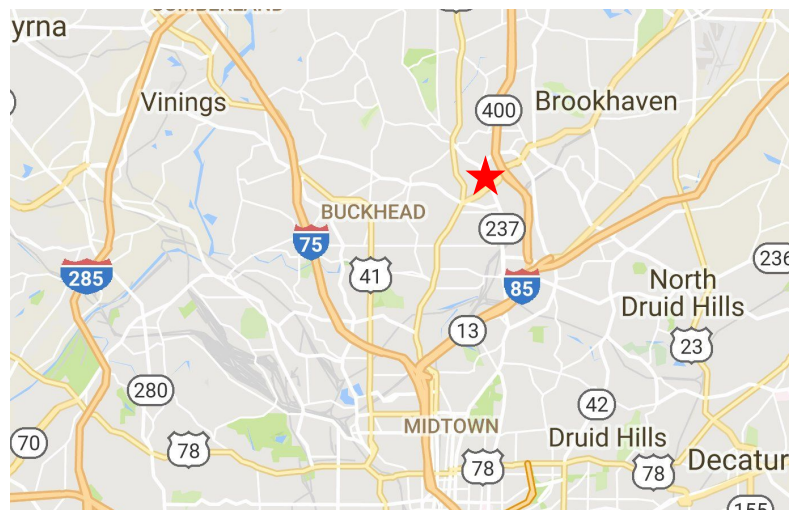
**3330  
PEACHTREE  
ROAD**

**3330 PEACHTREE ROAD NE  
ATLANTA, GA 30326**

Partnership. Performance.

### *Property Highlights*

- 7,500 SF, full floor opportunity
- Available Immediately
- Build to Suite
- Building Signage opportunity
- Central Buckhead location
- Direct visibility on Peachtree, one block from GA-400



Kirk Rich, CCIM SIOR, Principal  
770.916.6112  
kirk.rich@avisonyoung.com

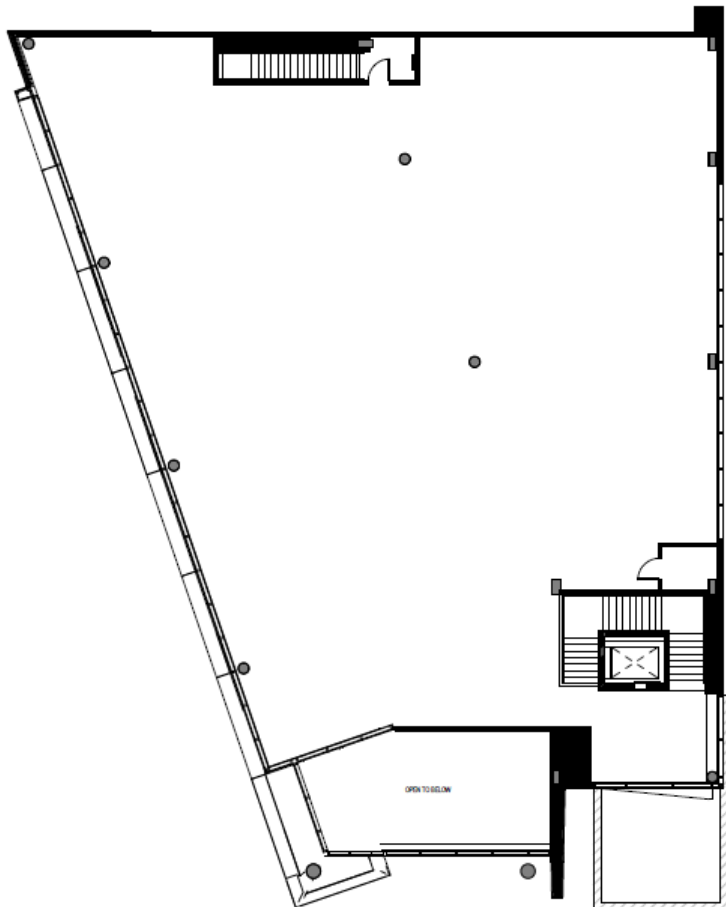
Jillian Woodliff, Associate  
404.865.3678  
jillian.woodliff@avisonyoung.com



Partnership. Performance.



7,500 SF 2ND FLOOR OFFICE SPACE AVAILABLE



# 3330 PEACHTREE ROAD

3330 PEACHTREE ROAD NE  
ATLANTA, GA 30326

For Additional Information please contact:

Kirk Rich, CCIM SIOR, Principal  
770.916.6112  
kirk.rich@avisonyoung.com

Jillian Woodliff, Associate  
404.865.3678  
jillian.woodliff@avisonyoung.com

