

Lowry Morrison

200 Washington Ave N,
Minneapolis

— NORTH LOOP —



THE CELEBRATED NORTH LOOP

The Heart of Northeast Minneapolis provides a small-town feel nestled in the city. You will find a mix of old and new which fit together well here. The history of the area coupled with the modern amenities that abound has made this part of Northeast a desirable place to be.



254,423
POPULATION
WITHIN 3 MILES



31
AVERAGE AGE
WITHIN 3 MILES



\$67K
MEDIAN HOUSEHOLD
WITHIN 3 MILES



96
WALK SCORE



75
TRANSIT SCORE



88
BIKE SCORE



PROPERTY OVERVIEW

Situated on the corner of Washington Avenue N and Second Avenue N, this stately historic building features brick and timber throughout while welcoming all through the office lobby that has a touch of modern glam! The hardwood floors, exposed brick walls and arches, high ceilings in this second-floor vacancy are complimented by beautiful demountable walls, modern kitchen, and bathrooms. Enjoy amazing Minneapolis skyline views, great walkability, with the ease of parking, public transportation, and freeway accessibility. This beautiful suite features a direct entrance from the elevator and has abundant natural light.

Address

200 Washington Ave N, Minneapolis, MN 55401

Building Size

20,064 SF

Year Built / Renovated

1879/ 2019

Space Available

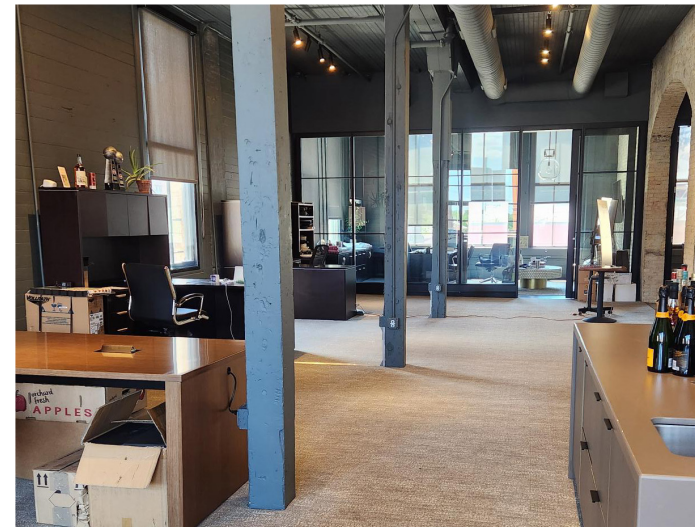
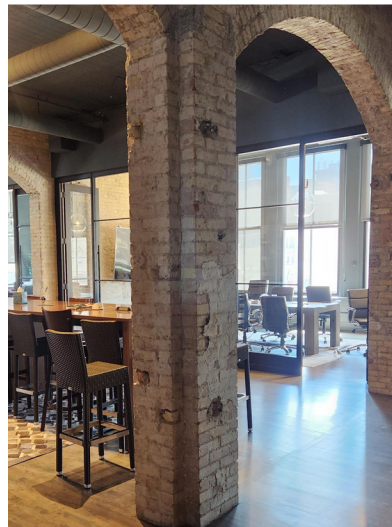
4,667 SF

Rent Rate




\$26.00/SF/yr (NNN)

CAM & Taxes (2026 Estimate)




\$16.98 PSF

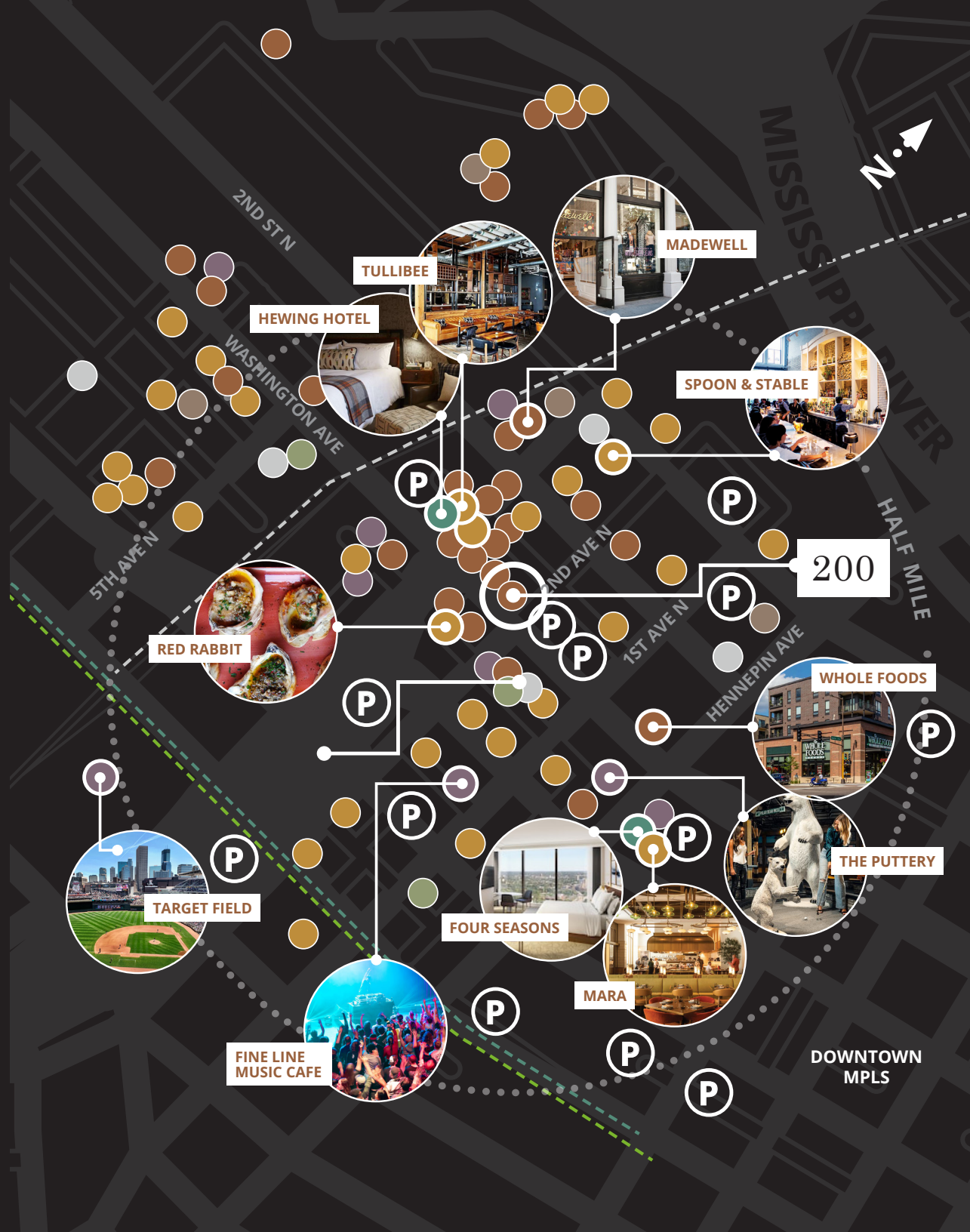


WHAT'S NEARBY

-  DINING
-  RETAIL
-  FITNESS
-  COFFEE
-  BEER & WINE
-  ENTERTAINMENT
-  HOTEL
-  PUBLIC PARKING

LIGHT RAIL

-  LRT GREEN LINE
-  LRT BLUE LINE
-  NORTHSTAR COMMUTER



SUITE 200

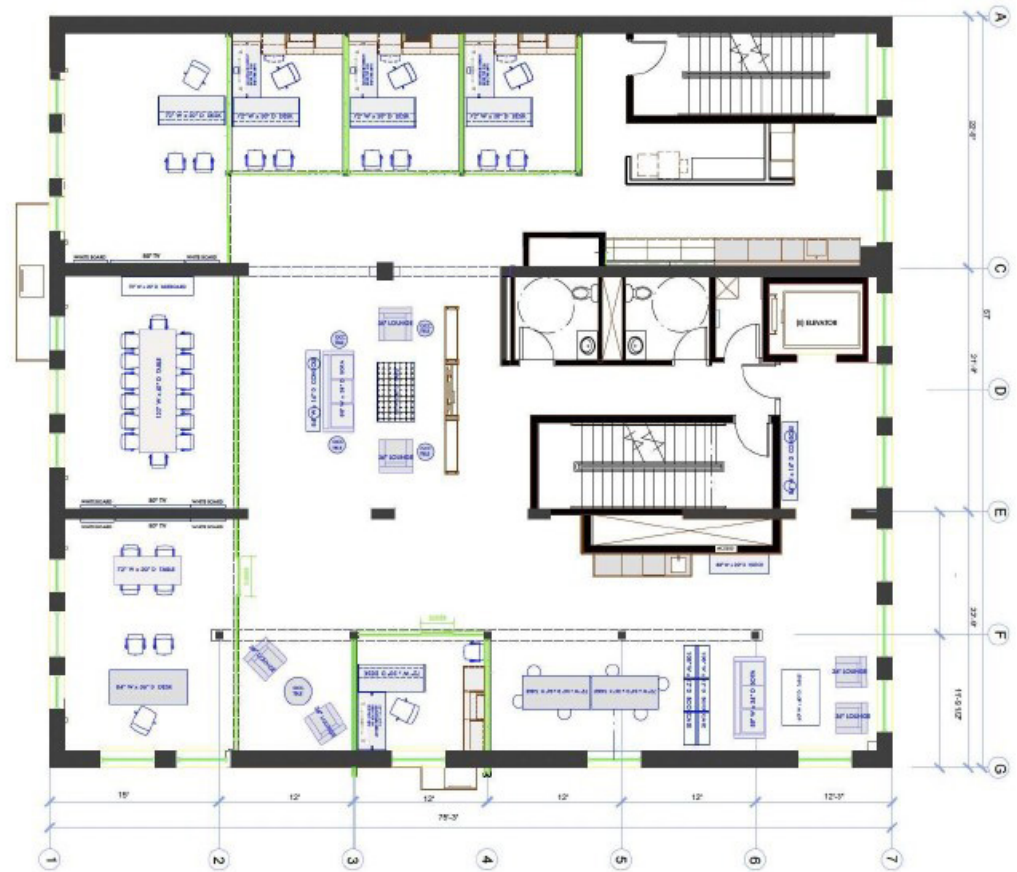
FLOOR PLAN

Rentable Area
4,667 RSF

Availability
Within 30 days

Lease Rate
\$26.00/SF/yr (NNN)

CAM & Taxes
\$16.98/SF/YR





**HISTORIC
RIMARCİK**

NORTH LOOP

TERESE REILING
Senior Vice President
+1 952 897 7738
terese.reiling@colliers.com

CLAIRE ROBERTS, SIOR
Vice President
+1 952 897 7763
claire.roberts@colliers.com

