



workspace

reframmed

FRAM  WORK

124 ST VINCENT STREET
GLASGOW / G2 5HF

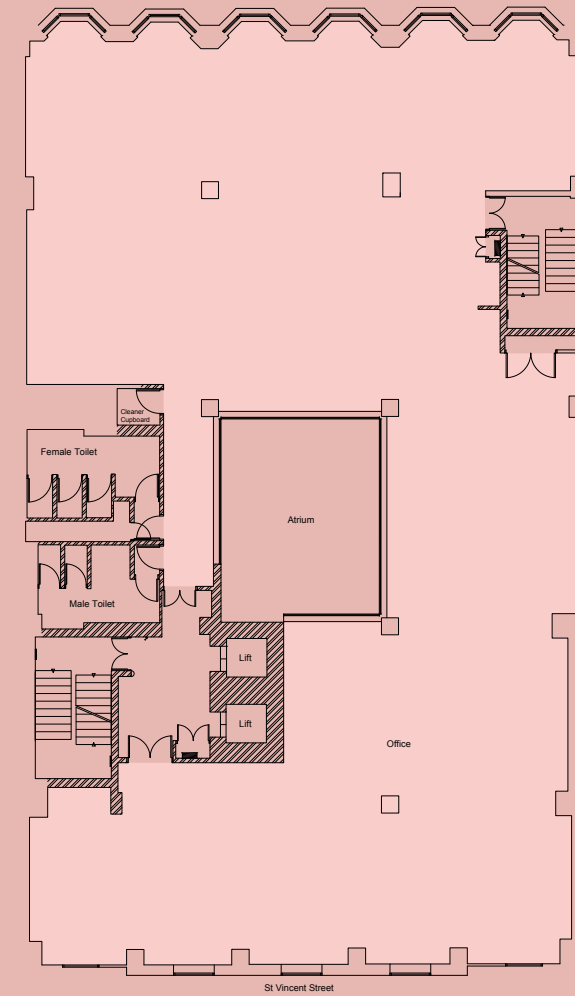


FRAMWORK



Typical Floor

Floor	Sq Ft
Seven	Let to Systra
Six	4,855
Five	4,860
Four	4,859
Three	4,864
Two	4,860
One	5,430
Total	29,728



FRAMWORK



29,728 sq ft of truly contemporary Glasgow city centre workspace offering floors from 4,855 sq ft - 5,430 sq ft

Specification Summary:

- > New entrance & shopfronts
- > New reception & seating area
- > Interactive directory & access control
- > Exposed, painted concrete ceiling
- > VRF Air Conditioning
- > Suspended LED lighting with ceiling rafts
- > Underfloor trunking & floor boxes
- > Contemporary floor coverings
- > Dedicated male and female toilets
- > Wheelchair accessible
- > EPC - C

Arriving Winter 2020

Amenities Summary:



Onsite coffee shop

Communal seating areas



Secure basement car parking



Secure indoor cycle storage



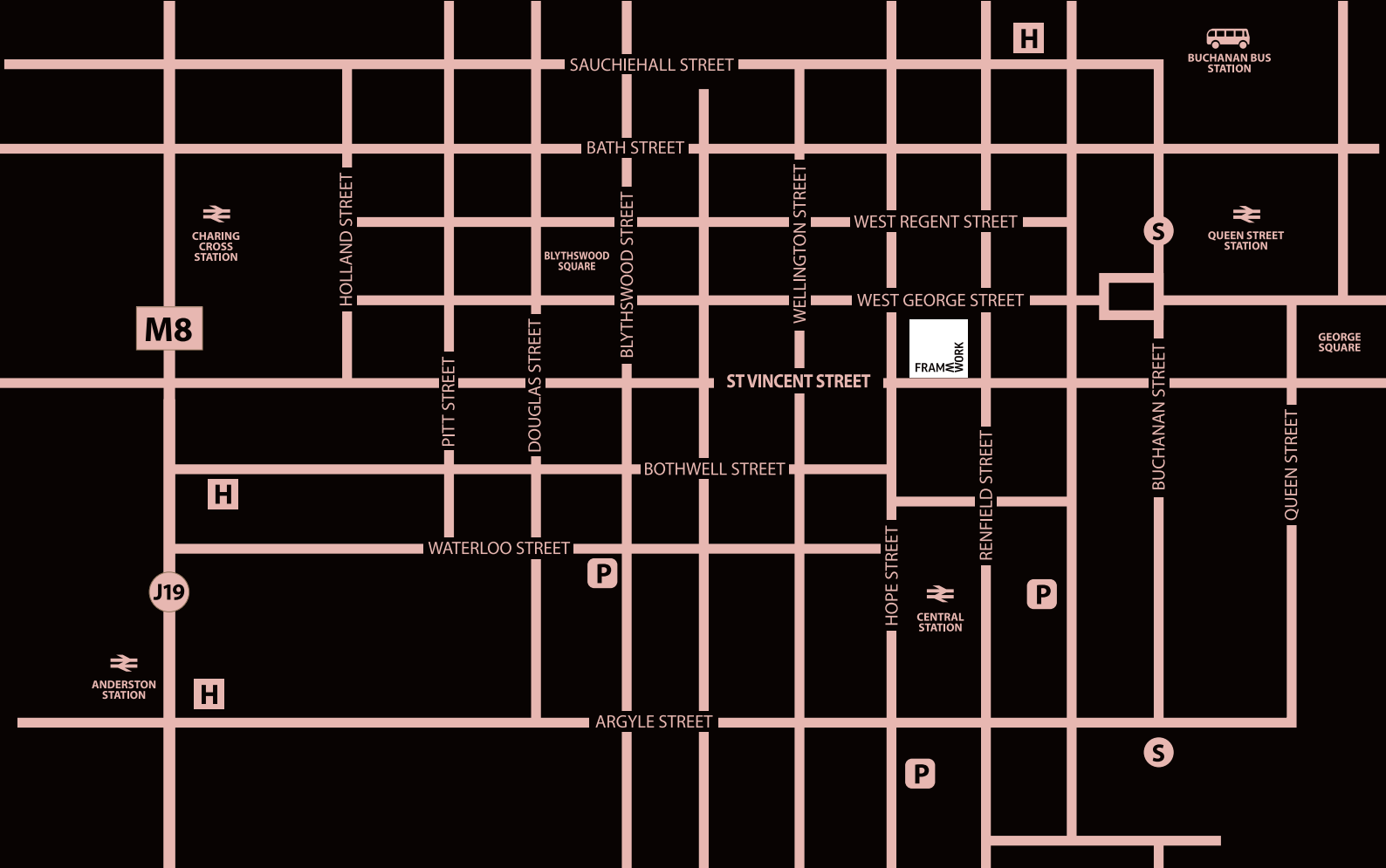
Drying facilities

Cycle maintenance station



Male / Female shower & changing facilities





Andy Cunningham
andy.cunningham@cbre.com
0141 204 7667

Alistair Urquhart
alistair.urquhart@cbre.com
0141 204 7756

Ken McInnes
ken.mcInnes@ryden.co.uk
0141 270 3136

Tim Jacobsen
tim.jacobsen@ryden.co.uk
0141 270 3170

CBRE
0141 204 7666
www.cbre.co.uk

Ryden.co.uk
0141 204 3838

frameworkglasgow.com

FRAMEWORK

124 ST VINCENT STREET
GLASGOW / G2 5HF