

# Logan UT Manufacturing w 3 Phase



Presented By:  
Parker Real Estate Services

645 N 600 W, Logan, UT 84321



# Logan UT Manufacturing w 3 Phase power

645 N 600 W, Logan, UT 84321

## Property Details

55,000 SF Manufacturing Space with ample 480 V 3 Phase power, fire sprinklers and vacant lot area that can be added to the lease. 8 dock level doors. Divisible space. Former Dutro property. Many options.

**Price: \$9.50 /SF/YR**

- Heavy Industrial space
- 200+ amps 480 V 3 Phase Power
- Eight truck docks

View the full listing here: <https://www.loopnet.com/Listing/645-N-600-W-Logan-UT/32465835/>

Rental Rate:	\$9.50 /SF/YR
Property Type:	Industrial
Property Subtype:	Manufacturing
Rentable Building Area	75,000 SF
:	
Year Built:	1993
Taxes:	\$0.07 USD/SF/MO
Operating Expenses:	\$0.08 USD/SF/MO
Rental Rate Mo:	\$0.79 /SF/MO

# Logan UT Manufacturing w 3 Phase power

645 N 600 W, Logan, UT 84321

## Listing space

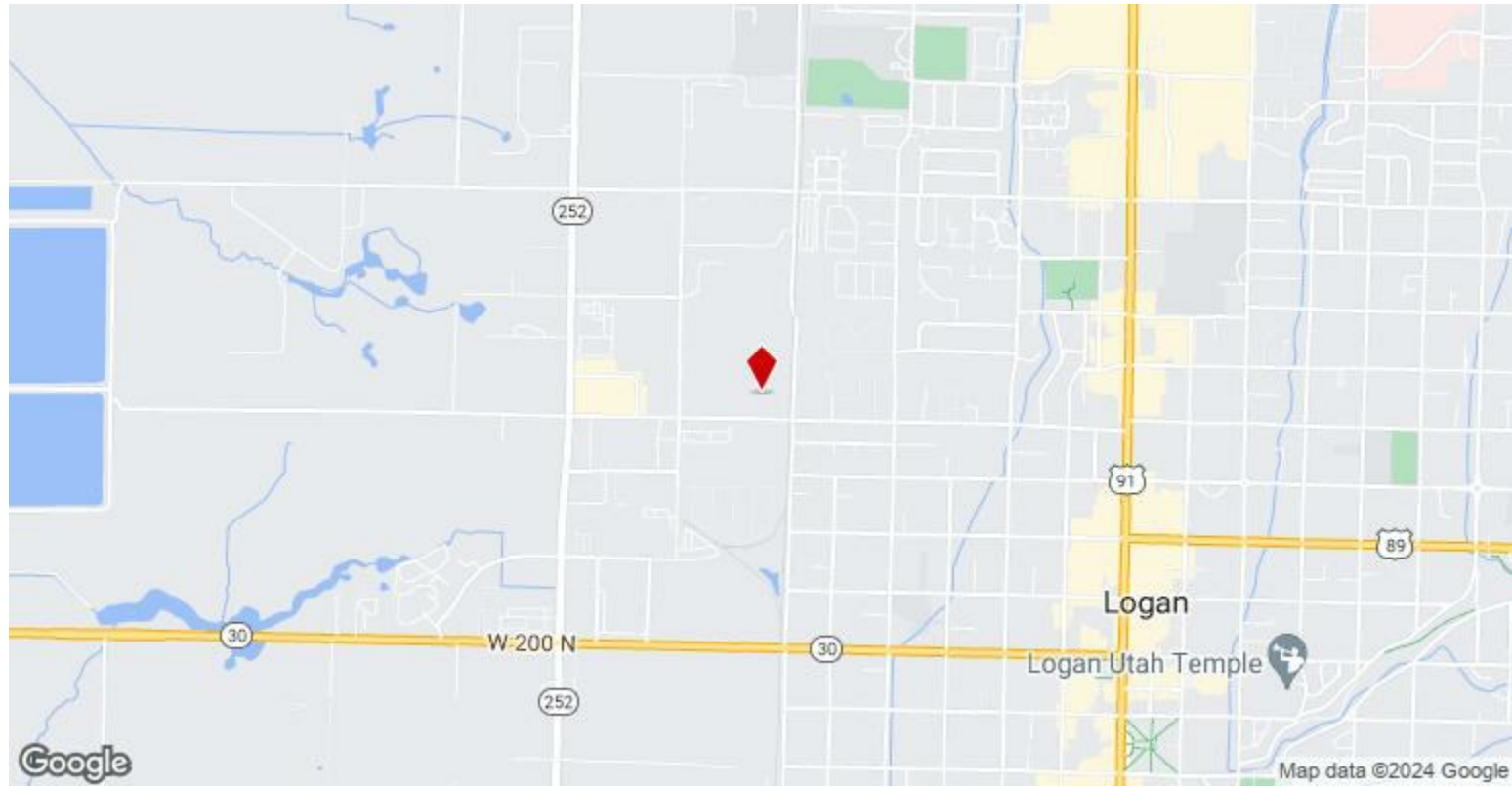
1st Floor	Space Available:	55,000 SF
	Rental Rate:	\$9.50 /SF/YR
	Date Available:	Now
	Service Type:	Triple Net (NNN)
	Space Type:	Relet
	Space Use:	Industrial
	Lease Term:	1 Years

55,000 SF Manufacturing Space with ample 480 V 3 Phase power, fire sprinklers and vacant lot area that can be added to the lease. Divisible space. Many options.

# Logan UT Manufacturing w 3 Phase power

645 N 600 W, Logan, UT 84321

## Location



# Logan UT Manufacturing w 3 Phase power

645 N 600 W, Logan, UT 84321

## Property Photos



IMG\_0182

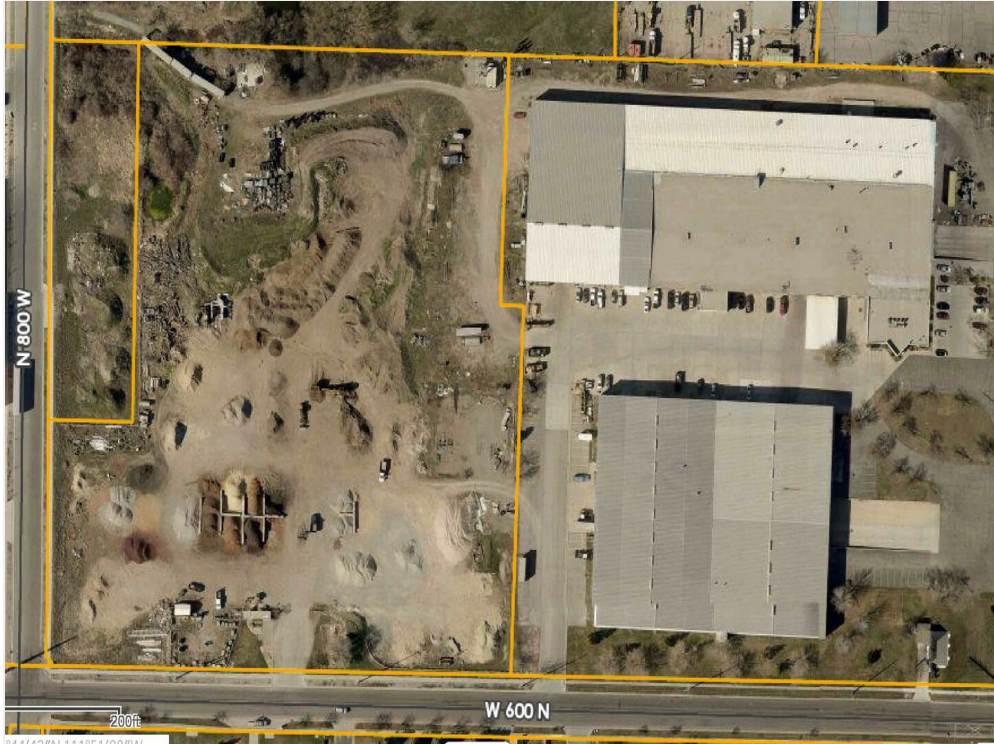


Exterior view

# Logan UT Manufacturing w 3 Phase power

645 N 600 W, Logan, UT 84321

## Property Photos



Aerial



IMG\_9986

# Logan UT Manufacturing w 3 Phase power

645 N 600 W, Logan, UT 84321

## Property Photos



IMG\_9975



Mezzanine office space

# Logan UT Manufacturing w 3 Phase power

645 N 600 W, Logan, UT 84321

## Property Photos



IMG\_9981



IMG\_0184

# Logan UT Manufacturing w 3 Phase power

645 N 600 W, Logan, UT 84321

## Property Photos



IMG\_0190



IMG\_0189

# Logan UT Manufacturing w 3 Phase power

For more listing information visit:  
<https://www.loopnet.com/Listing/645-N-600-W-Logan-UT/32465835/>

645 N 600 W, Logan, UT 84321



**Blake Parker**

[blakehparker@gmail.com](mailto:blakehparker@gmail.com)

(435) 755-9900 Ext: 208

**Parker Real Estate  
Services**

45 E 200 N, Suite 200  
Logan, UT 84321

