

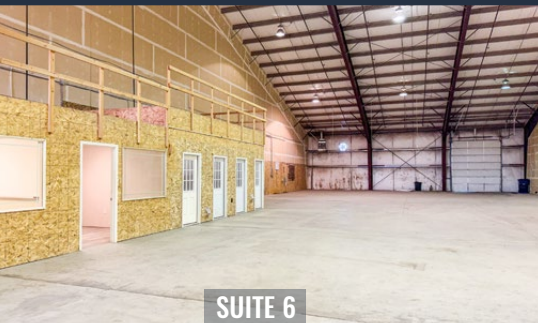
# FOR LEASE

9,000–18,000 SF | \$0.95/SF/MO. NNN

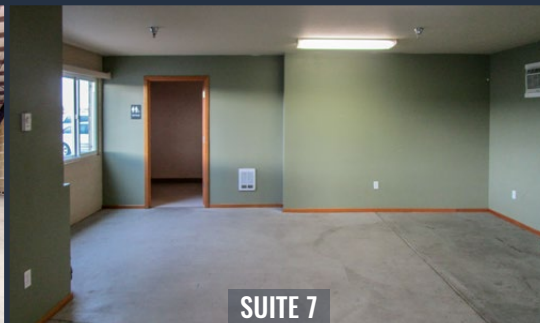
## The Dimeo Building Redmond Industrial Space

494 SW Veterans Way, Redmond, OR 97756

**RATE REDUCED**  
Now \$0.85/SF/Mo. NNN



SUITE 6



SUITE 7



SUITE 7

### PROPERTY DETAILS

<b>Suite 6:</b>	9,000 SF   \$0.85/SF/Mo. NNN
<b>Suite 7:</b>	9,000 SF   \$0.85/SF/Mo. NNN
<b>Suite 6 &amp; 7:</b>	18,000 SF   \$0.85/SF/Mo. NNN
<b>CAMs:</b>	Est. at \$0.20/SF/Mo.
<b>Bldg. Size:</b>	69,103 SF
<b>Zoning:</b>	Light Industrial (M2)
<b>Parking:</b>	Ample onsite parking

### HIGHLIGHTS

- Each space features a large open warehouse with two grade level 14' roll up doors
- **Suite 6** features four private offices, breakroom, two restrooms, and four storage closets plus mezzanine above offices
- **Suite 7** features an office and two restrooms
- 22' eve – 32' at center (clear span)
- 3-phase power

Dan Kemp, CCIM | Emilio Tiscareno, Broker

600 SW Columbia St., Ste. 6100 | Bend, OR 97702

541.383.2444 | [www.CompassCommercial.com](http://www.CompassCommercial.com)

COMPASS  
COMMERCIAL

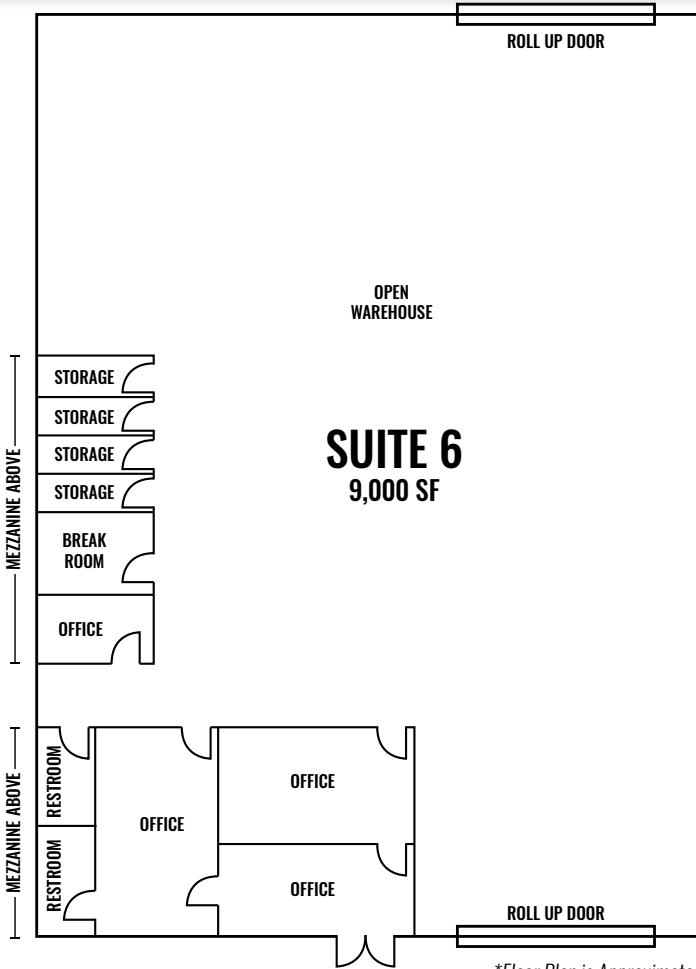
REAL  
ESTATE  
SERVICES

# FOR LEASE

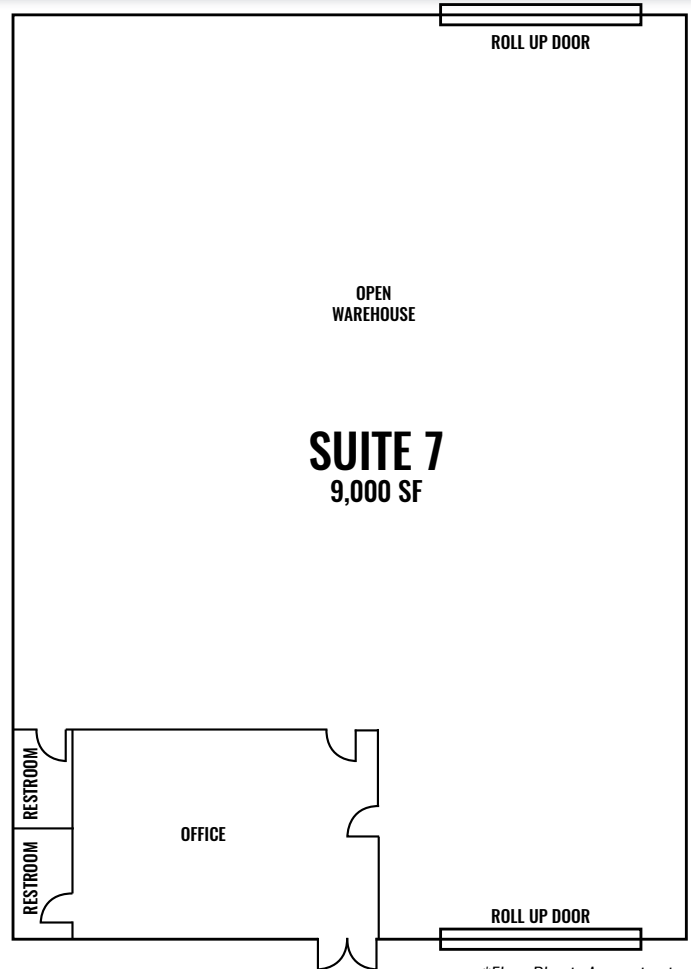
9,000–18,000 SF | \$0.85/SF/MO. NNN

## The Dimeo Building Redmond Industrial Space

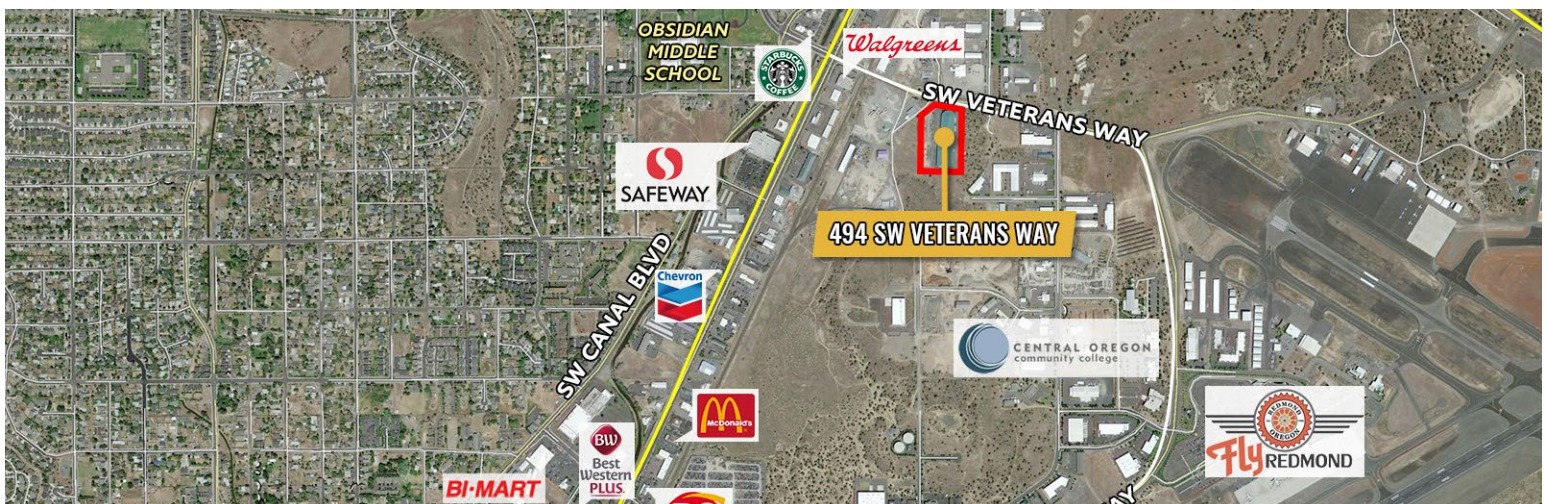
494 SW Veterans Way, Redmond, OR 97756



\*Floor Plan is Approximate



\*Floor Plan is Approximate



Brokers are licensed in the state of Oregon. This information has been furnished from sources we deem reliable, but for which we assume no liability. This is an exclusive listing. The information contained herein is given in confidence with the understanding that all negotiations pertaining to this property be handled through Compass Commercial Real Estate Services. All measurements are approximate.



**Dan Kemp, CCIM**  
Partner, Principal Broker  
Cell 541.550.8413  
dkemp@compasscommercial.com



**Emilio Tiscareno**  
Broker  
Cell 541.213.9640  
etiscareno@compasscommercial.com

**COMPASS**  
COMMERCIAL

**REAL ESTATE**  
SERVICES